

CITY OF WINNIPEG BRADY ROAD RESOURCE MANAGEMENT FACILITY

Preliminary Landscape Plan

October 20, 2014

PROCESS

- ☒ Research (local and international)
- ☒ Establish Preliminary Goals and Concerns
- ☒ Preliminary Examination of Site as a Whole and Proposal of Overall Preliminary Landscape Plan
- ☒ Create Preliminary Proposal for Landscape Plan Over 5 Year Span
- ☐ Presentation to and input from Community Group (October)
- ☐ Revise Preliminary Landscape Plan
- ☐ Presentation to Community Group (November)
- ☐ Revise Landscape Plan Further
- ☐ Submit Landscape Plan (December)

RESEARCH

The Future of Brady Road Landfill

October 27, 2011



BRADY LICENSING PUBLIC PARTICIPATION REPORT

November 2011

For more information on this survey, please contact:

Tiffany Skomro
Public Consultation & Research Officer
112 – 1199 Pacific Ave
Ph: 204.986.4838
Fax: 204.986.3745
E-mail: tskomro@winnipeg.ca

The Changing Face of Brady Road Resource Management Facility



HOPEWELL DEVELOPMENT CORPORATION REMEDIAL ACTION PLAN FOR THE USE OF LIME MUD FOR LANDSCAPING

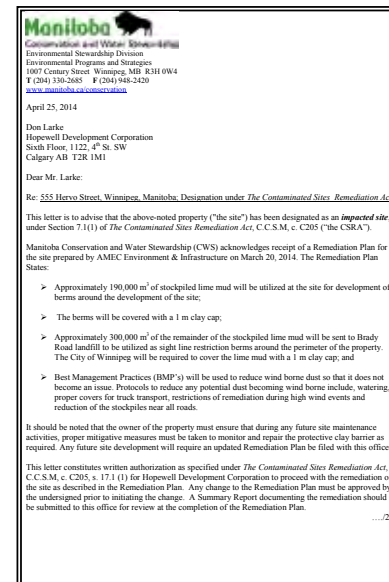
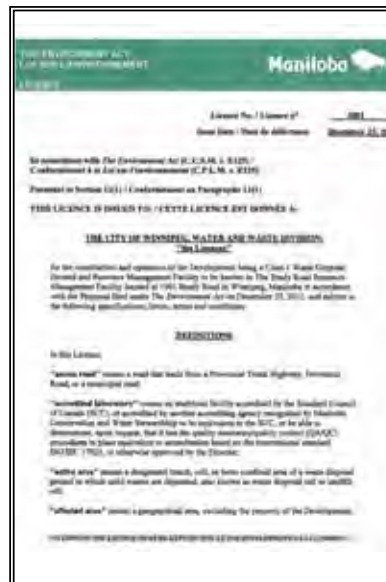
Submitted to:
Manitoba Conservation
Warren Rospad, B.Sc.

Submitted by:

AMEC Environment & Infrastructure
A Division of AMEC Americas Limited
440 Dovercourt Drive
Winnipeg, Manitoba
R3Y 1N4
204-488-2997

20 March 2014

AMEC Project No: WX17301



GOALS

- ☒ Creation of Physical and Visual Buffers from the Operations at the Development to adjacent properties
- ☒ Habitat Creation (wetland, forest)
- ☒ Recreation Areas
- ☒ Community Gardens

CONCERNS

- ☒ Odour and Sound issues in surrounding neighbourhoods (Waverley West, St. Norbert, Richmond West)
- ☒ Views from surrounding neighbourhoods

GOALS

Creation of Physical
and Visual Buffers



Shelterbelts and Berms (2016 and onward)
Odour and Sound Control
Forestation (2018 and onward)

Habitat Creation



Prairie Planting (2016 and onward)
Forestation (2018 and onward)
Wetlands (2020 and onward)

Recreation Areas



<i>Open Lawn / Fields</i>	<i>Cross Country</i>
<i>Walking Trails</i>	<i>Ski Paths</i>
<i>Biking Trails</i>	<i>Riding Trails</i>
<i>Running Paths</i>	<i>Sports Fields</i>

(2025 and onward)

Community Gardens
and Dog Parks



FRESH KILLS PARK

New York State

site plan

after landfill closure

The growth and colonization of lower shrubs, surface mats and clusters of islands produces a rich landscape matrix for the proliferation of life.






Island forest supports most plant species, including many endangered species, than any similarly sized area in New York State. Because of its geographical location, glacial and tectonic geomorphology, range of soil types, and microclimate, Staten Island is home to a rich mix of ecosystems, many unique in the region, and some fundamental to the health of larger ecosystems, such as the salt marsh, the lower marsh island network, and the eastern migrating bird route. Each of these ecosystems finds a new home in the new Fresh Kills Park.

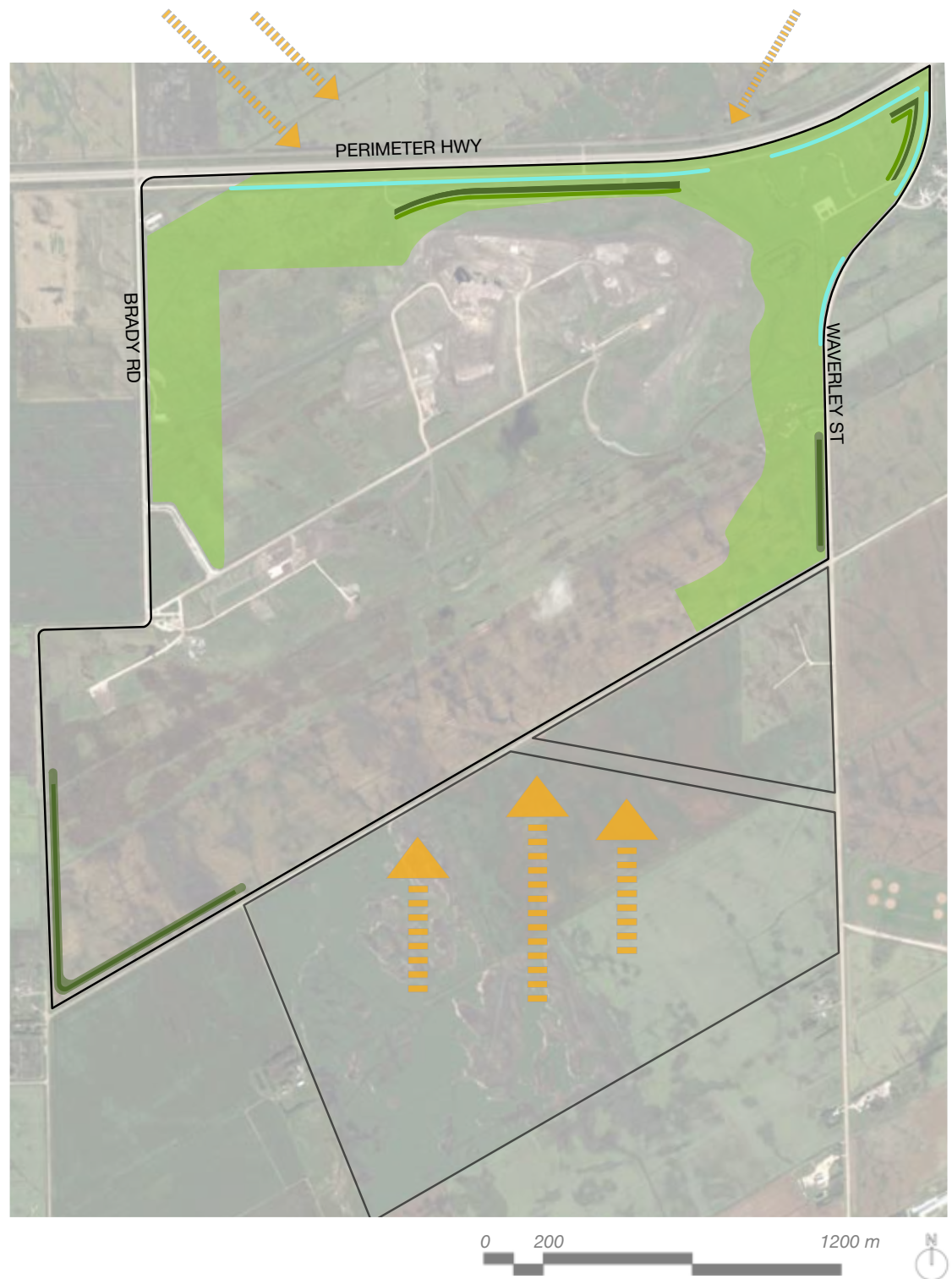


MEADOW | SUMMER



PRELIMINARY CONCEPT
2016 ONWARD

-  Preliminary Cover Crop (Year 1)
-  Shelterbelt
-  Shrub Layer
-  Lime Mud Berm
-  Swale



SHELTERBELTS



COVER CROP



BERMS



PRELIMINARY CONCEPT
2018 ONWARD

-  Preliminary Cover Crop (Year 1)
-  Shelterbelt
-  Shrub Layer
-  Lime Mud Berm
-  Swale
-  Prairie
-  Commercial Green Space
-  Forest



FORESTATION

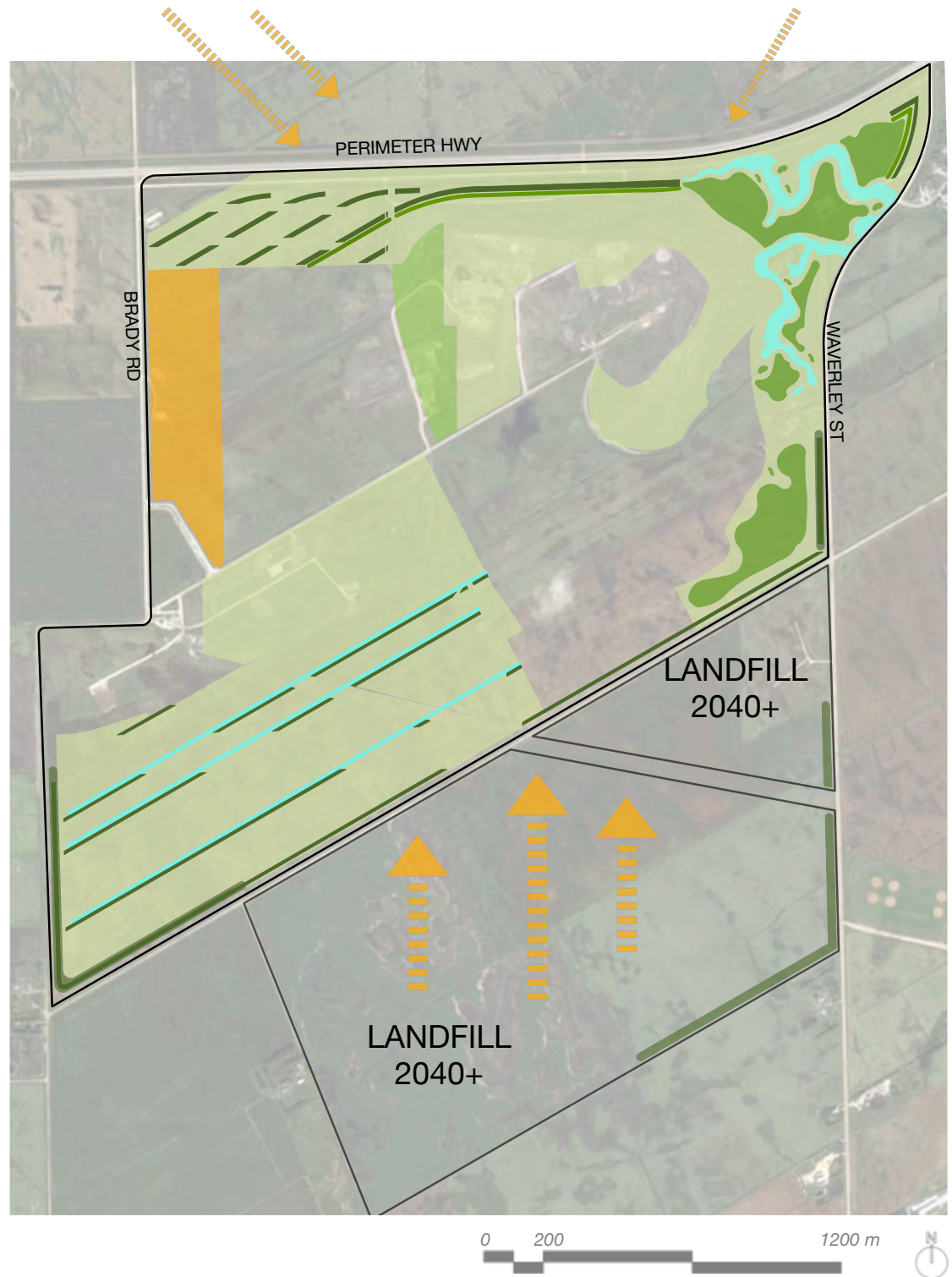


NATIVE PRAIRIE MEADOWS



PRELIMINARY CONCEPT
2020 ONWARD



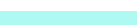









-  Preliminary Cover Crop (Year 1)
-  Shelterbelt
-  Shrub Layer
-  Lime Mud Berm
-  Swale and Wetlands
-  Prairie
-  Commercial Green Space
-  Forest

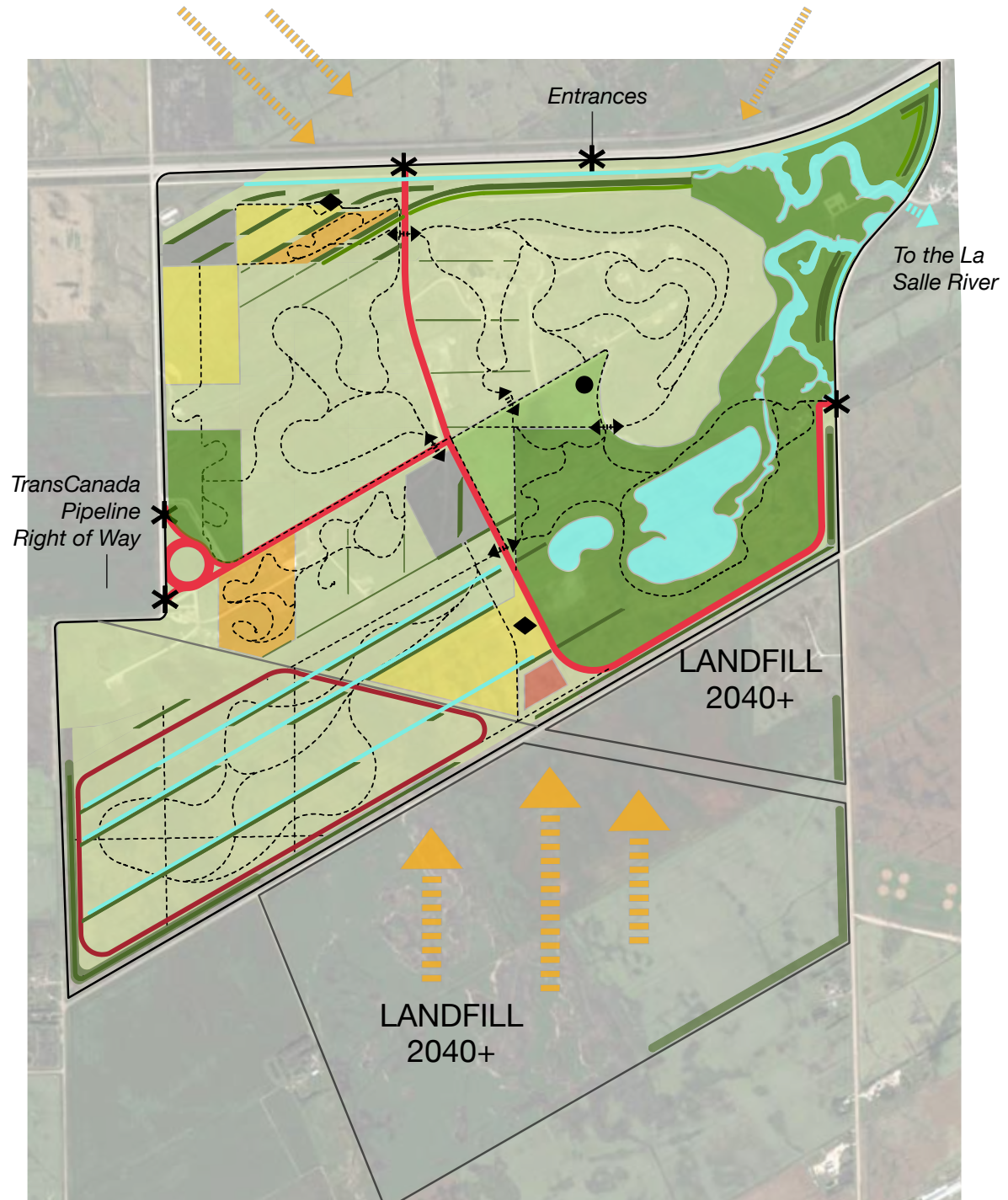


WETLANDS






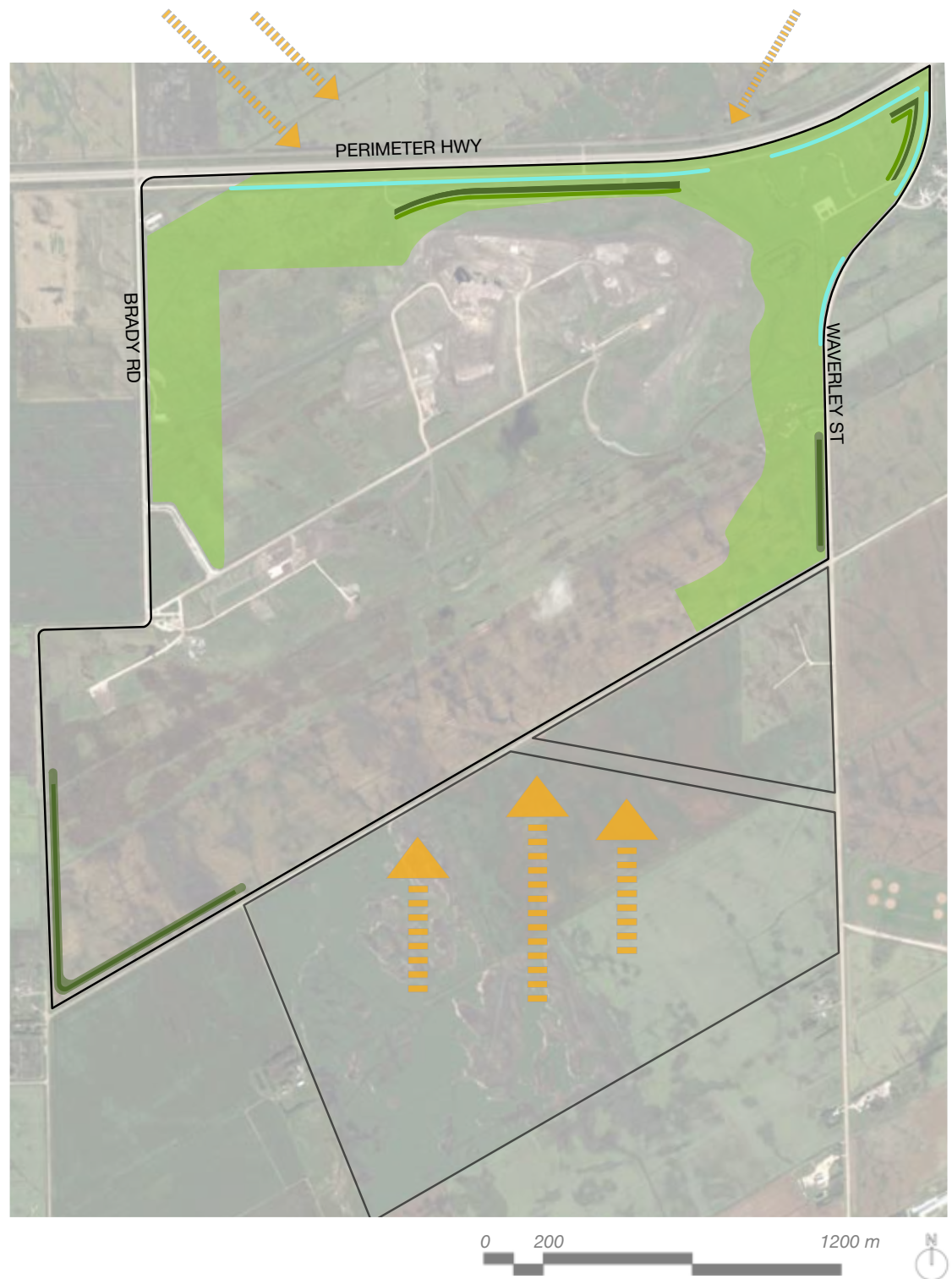
PRELIMINARY CONCEPT 2040 ONWARDS

-  Shelterbelts and Berms
-  Odour Control
-  Prairie Planting
-  Forest (over time)
-  Wetlands and Swales
-  Open Lawn / Fields
-  Walking Trails
-  Biking Trails
-  Running Paths
-  Cross Country Ski Paths
-  Riding Trails
-  Sports Fields
-  Community Gardens
-  Dog Parks
-  Vehicular Circulation
-  Parking
-  Picnic Area
-  Interpretive Centre



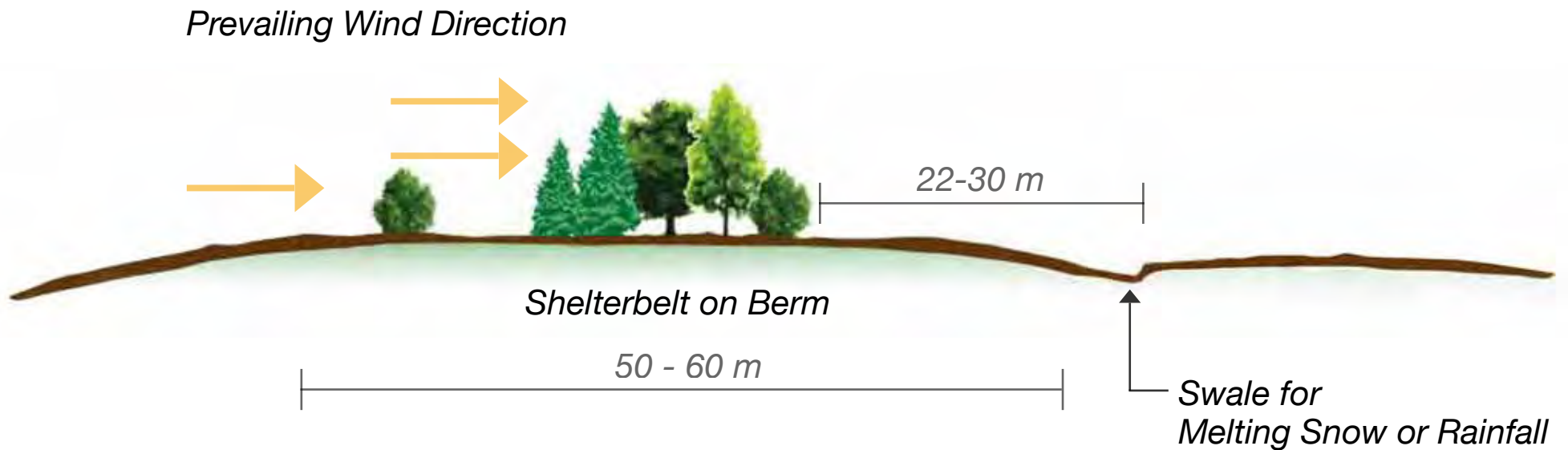
PRELIMINARY CONCEPT
2016 ONWARD

-  Preliminary Cover Crop (Year 1)
-  Shelterbelt
-  Shrub Layer
-  Lime Mud Berm
-  Swale



PRELIMINARY CONCEPT

Typical Section of Shelterbelt, Berm and Swale



The above section was modified from:
Agriculture and Agri-Food Canada. 2010. *Shelterbelts: Design Guidelines for Farmyard, Field, Roadside, Livestock, Wildlife, and Riparian Buffer Plantings on the Prairies*. [http://www1.agric.gov.ab.ca/\\$Department/deptdocs.nsf/all/epw10940/\\$FILE/Shelterbelts_Design_and_Guidelines.pdf](http://www1.agric.gov.ab.ca/$Department/deptdocs.nsf/all/epw10940/$FILE/Shelterbelts_Design_and_Guidelines.pdf) (accessed September 2014). Fig. 12, p. 19.

QUESTIONS

- ☐ Input on long and short term goals (2016, 2018, 2020, 2040+)
- ☐ What are you glad to see? (short term / long term)
- ☐ Areas of concern over next 5 years?
- ☐ Thoughts on phasing construction?