

Brady Road Resource Management Facility Community Liaison Committee

Thursday, November 22, 2018

Licence and Committee Recap

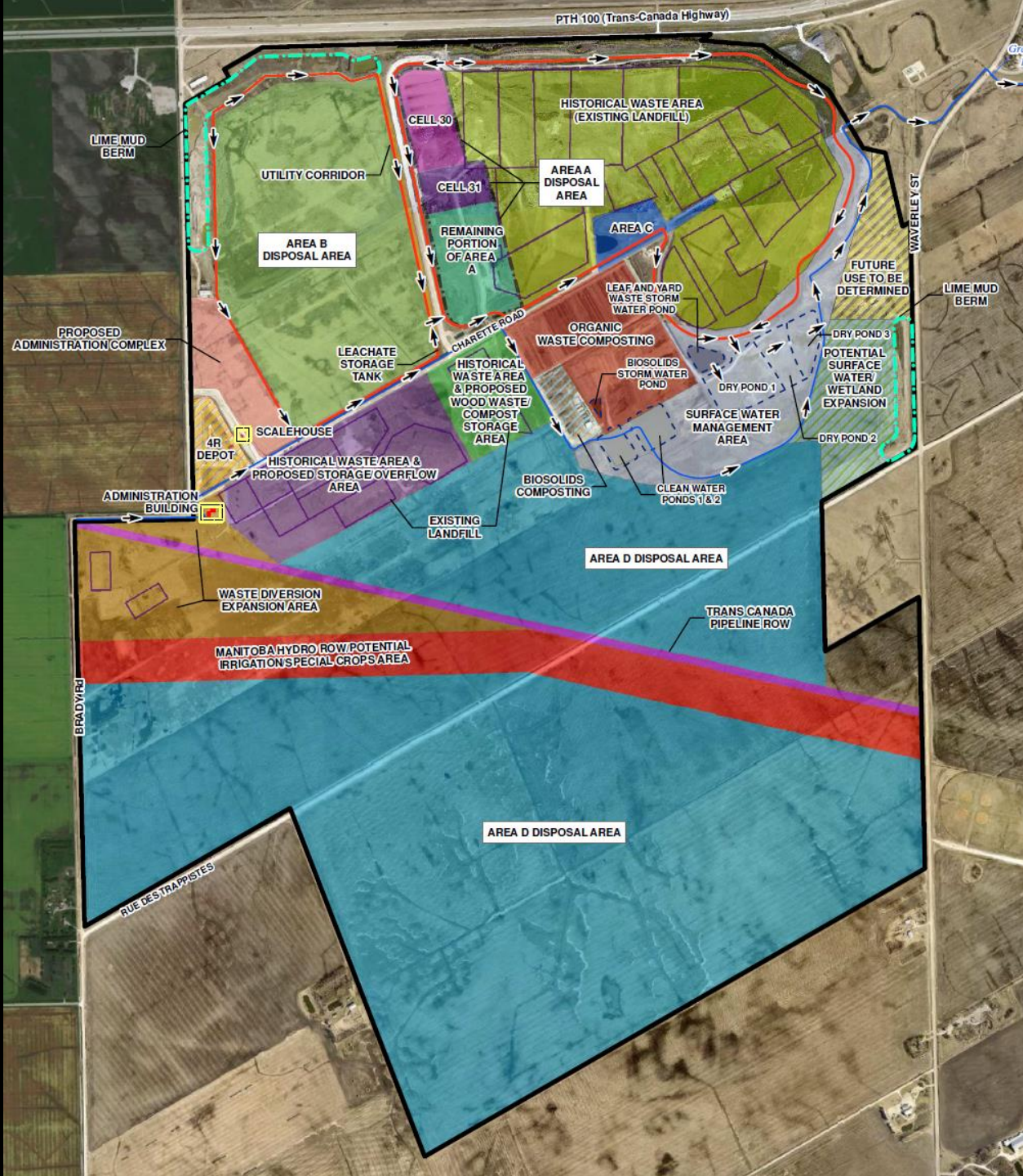
- A community liaison committee is a requirement of the environmental licence issued by the Province for the BRRMF
- The role of the committee is to provide advice on
 - a plan for landscaping finished areas of the landfill
 - a plan for monitoring noise and odour
 - ways to reduce the impact of landfill activities on the local environment

Licence and Committee Recap cont'd

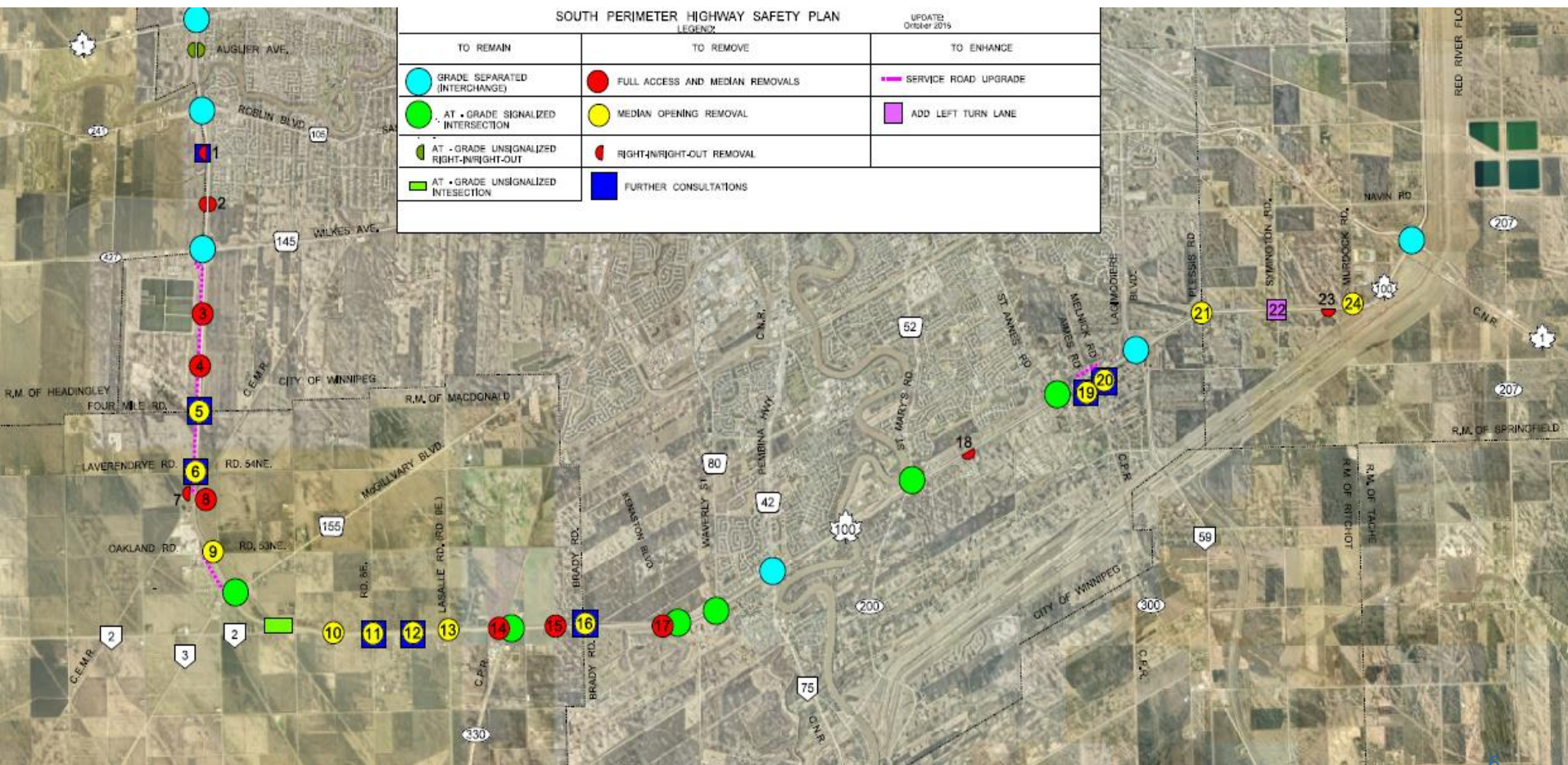
- Goals of the committee are to
 - work collaboratively
 - enhance quality of life for residents directly impacted by landfill activities
 - ensure waste diversion remains a key focus in our short- and long-term visions

Landscaping and Long-term Site Planning

- Tree test-plots on north face have had varying levels of success
- Brady Master Plan, which includes landscaping, is almost complete
- Manitoba Infrastructure released plan to improve safety on the south perimeter
 - proposes closing the intersection at Brady



South Perimeter Access



Landscaping and Long-term Site Planning cont'd

- Hauling of the original volume of lime mud is complete
- Shaping, topsoil and seeding of berms along Brady and Perimeter is complete
- Work is underway to vegetate the lime mud berms
 - will be working with the Forestry branch to determine which trees and native grasses will work best

Odour, Noise and Nuisance Management

- Received 13 odour complaints since last meeting (May 24, 2018)
 - over the same time frame, this is an increase in complaints from 2017 but a decrease from 2016
- Continue to mitigate odour through daily cover and using woodchips as a biofilter where needed
- Falconers contract ended for the year on October 31
- Capping of the north face will be completed in 2019, which will help with litter concerns
- Litter control continues to be managed by City staff and our partnership with New Directions

Site Improvements, Seasonal and Project Activity

- Charette Road has been paved
- Construction of new administration building expected to be complete mid January 2019
- Curbside yard waste collection for 2018 ends Nov 23
- Leaf and yard waste compost use to date in 2018:
 - used on-site to promote vegetation growth on closed portions of the landfill
 - gave away 200 m3 of compost to the public at our compost awareness week event
 - gave 340 m3 to the Public Works department to use in their projects
 - sold 20,740 m3

LYW Compost Pad

November 15, 2018



Site Improvements, Seasonal and Project Activity cont'd

- Work in cell 30 is approximately 90% complete
 - top of cell 30 needs some filling on the west side and needs to be sloped up to cell 31
 - this will be complete once cell 31 is up to elevation



CLOSED
CELL 30

This is an aerial photograph of a large landfill site. The site is divided into several colored regions. A large yellow area covers most of the upper and right portions of the site. A narrow vertical strip on the left is divided into four colored sections: olive green at the top, blue, light blue, and bright green at the bottom. These sections are labeled with text indicating their status and the year they became active. The text 'CLOSED CELL 30' is in the olive green section. 'ACTIVE CELL 31' is in the blue section. '2019' is in the light blue section. '2021' is in the light blue section. '2023' is in the bright green section. A small, irregularly shaped area in the center of the yellow region is labeled 'CLOSED LANDFILL'. The surrounding landscape is arid and brown, with some roads and other land parcels visible at the edges.

ACTIVE
CELL 31

2019

2021

2023

CLOSED
LANDFILL

Reducing the Impact on the Environment

- New leachate collection system has been installed
 - works like a low pressure sewer, directing leachate to a single tank, rather than multiple wells

Leachate Collection System



New Leachate Tank



Research Partnerships and Resource Development

- Cattail composting program is ongoing
- Discussions to convert landfill gas to energy are ongoing
- Continue to work with Wood Anchor to reclaim elm trees and reuse as flooring and furniture
- SYLVIS soil manufacturing pilot project continues
- Have reached an agreement with Mother Earth Recycling for a one-year mattress recycling pilot at the Brady 4R Winnipeg Depot
 - funding covers approximately 8,000 mattresses
 - to begin in early 2019

Landfill Gas Flare



Discussion Items from Last Meeting

- Community awareness – shareable recycling awareness materials
 - Download the recycling poster at winnipeg.ca/recycling, available in [English](#) and [French](#)
 - *What Goes Where* tool at winnipeg.ca/whatgoeswhere and in the Recycle Coach app
 - [Water and Waste playlist](#) on City's YouTube channel
- Developed new recycling ads for print, radio, TV, buses, OMG containers, social media, and digital ads in all City leisure centres, pools and arenas

Changes to City Council

- Councillor Janice Lukes – Waverley West ward
- Councillor Markus Chambers – St. Norbert-Seine River Ward
- Councillor Cindy Gilroy – chairperson of the Standing Policy Committee on Water and Waste, Riverbank Management and the Environment

Next Meeting