

# **Brady Road Resource Management Facility**

## **Community Liaison Committee**

**Wednesday, November 1, 2017**

# Environmental Monitoring

- Closed landfills presentation
  - presented to the Standing Policy Committee on Water and Waste, Riverbank Management and the Environment – May 29, 2017

# Leachate and Surface Water Management

- Leachate study will be finished in December and includes:
  - Brady Road Resource Management Facility
  - Summit Road
  - Saskatchewan Avenue
  - Kilcona Park
- Draft master plan for BRRMF to be submitted by KGS November 1
- Surface water management plan is complete

# Odour, Noise, and Nuisance Management Update

- Received 6 odour complaints since last meeting (June 1, 2017)
- Landfill gas expansion construction completed October 18
  - includes 24 wells and 3,500 metres of piping
  - expect to collect an additional 1,000 standard cubic feet per minute
  - will collect gas from northern leachate manholes

# Landfill Gas Expansion





# Landfill Gas Expansion





# Landfill Gas Expansion



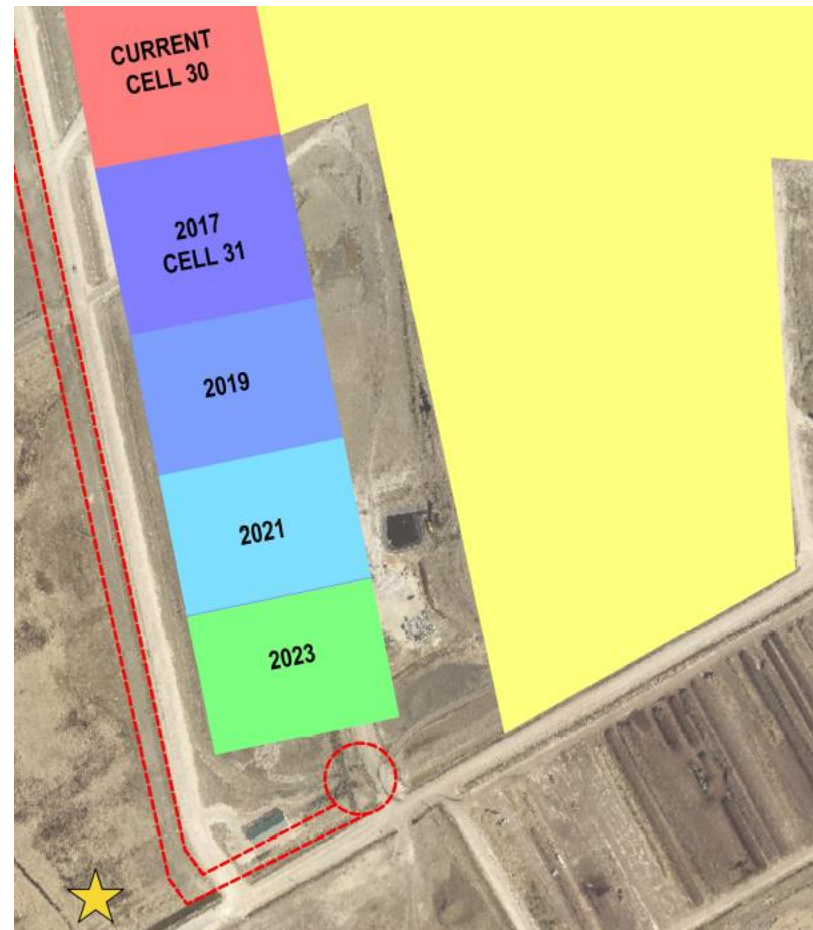
## Project Updates

- Construction of new administration building at Brady underway
  - will be informed by LEED principles to use green methods
- Construction to refurbish/rebuild Charette Road to begin in 2018
  - paved surface will help reduce noise and dust
- Yard waste and biosolids composting continues
  - will continue to use material as final cover at Brady to promote vegetation growth
  - bid underway to sell 5,000 cubic metres of leaf and yard waste compost
  - will continue to look at other uses in 2018



## Project Updates Cont'd

- New cell construction began in July, expect to be completed December 18, 2017
- Construction of centralized leachate tank began in July, expect to be completed July 2018
- ★ Indicates location of new leachate tank



## Landscaping Update

- North face has been restored from landfill gas expansion with native prairie grass mixture
- Hopewell to plant trees on berm along Perimeter Highway in 2017 and 2018



## Lime Mud Berm Construction Updates

- Lime mud is the remaining material from the sugar refining process, and is transported from the former Sugar Beets plant site on Chevrier Blvd
- Berms are being constructed to act as an odour, noise, and visual buffer
- Work along Waverley Street is complete, including topsoil, compost, and seeded with native grass mix
- Hauling has temporarily been placed on hold due to unexpected circumstances at Chevrier site





# Waverley Berm (East Side)





# Waverley Berm (West Side)



## 4R Winnipeg Depot Project Update

- Brady 4R Winnipeg Depot
  - diverted over 6,000 metric tonnes of material so far in 2017 (compared to 4,079 metric tonnes 2016)
- Pacific 4R Winnipeg Depot
  - opened January 26, 2017
  - diverted over 1,000 metric tonnes to date
- Panet 4R Winnipeg Depot
  - will be located on Panet Road at Mission Street
  - construction is underway
  - expected to open early 2018

## Innovation and Partnerships

- Working with the International Institute for Sustainable Development (IISD) and Wastewater Services to compost cattails from stormwater ponds
  - 3,377 tons of cattails have been composted
- Ongoing discussions to convert landfill gas to energy
- Continuing discussions on possibility to divert mattresses from landfill



## Innovation and Partnerships Cont'd

- SYLVIS soil manufacturing pilot project – March 2017
  - soil produced will continue to be monitored throughout 2017
  - program would be able to process biosolids in winter
  - final report on project due in 2018





# User Experience and Communications

- Working on posting average wait times/traffic volume at Brady online
- Report concerns to the city:
  - contact 311 (phone 311 or email [311@winnipeg.ca](mailto:311@winnipeg.ca))
  - @cityofwinnipeg on both Twitter and Facebook
  - My Waste app – missed collections or damaged carts only

## New Business

- New residential collection contract started October 1
  - city serviced by two different contractors, split between east and west
- We are projecting to compost 33,321 tonnes of yard waste in 2017
  - 34,029 tonnes of yard waste composted in 2016

# **Next Meeting**