

Brady Road Resource Management Facility Community Liaison Committee

Thursday, June 1, 2017

Landscaping Plan

- North face has been hydro-seeded with native prairie grass mixture
- Will continue hydro-seeding this fall
- Hopewell to plant trees on berm along Perimeter Highway in 2017
 - more trees to be planted in 2018
- Will continue to evaluate need for additional trees on lime mud berms and closed portions of landfill in 2019 and 2020



Lime Mud Berm Construction Updates

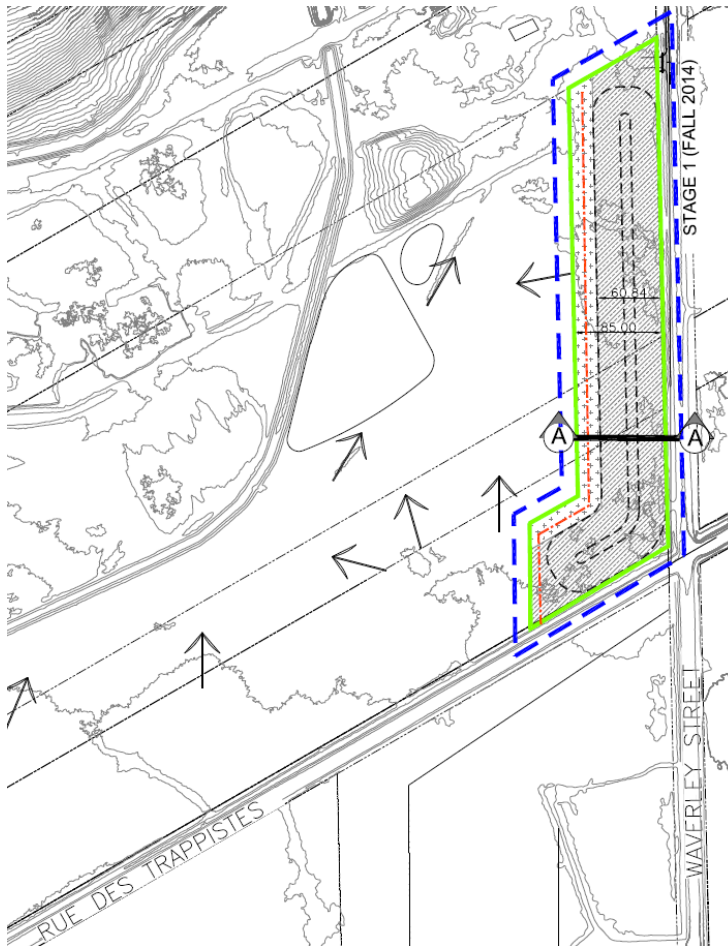
- Approximately 96% (535,000 m³) of the lime mud has been hauled and used to date
- Lime mud hauling to be completed by end of summer, 2017
- Work continues along Waverley Street
 - capping will commence when complete
- Expected to be completed by December 1, 2017

Lime Mud Berm Construction Updates Cont'd



Lime Mud Berm Construction Updates

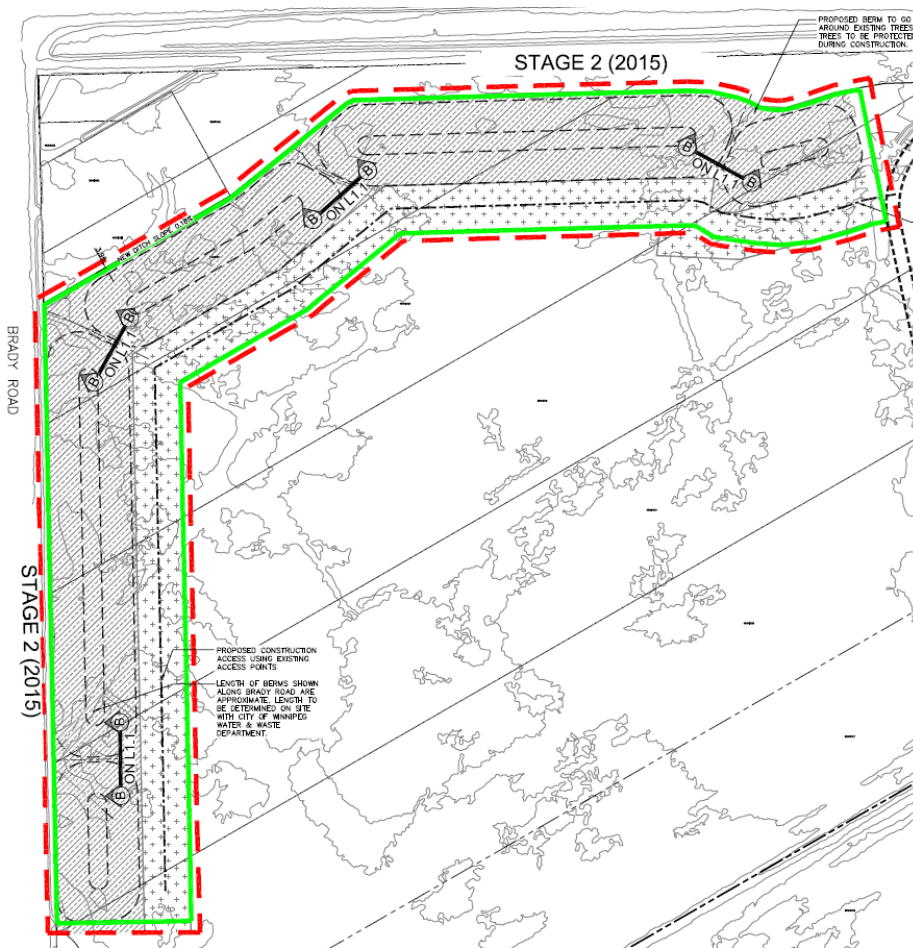
Phase One Berm



- Waverley St at Rue Des Trappistes

Lime Mud Berm Construction Updates

Phase Two Berm



- Brady Road at Perimeter Highway

Odour, Noise, and Nuisance Management

- Received 2 odour complaints to 311 so far in 2017
 - received 24 in all of 2016
- Falconers' season began March 1, 2017
 - will continue through late October (weather dependent)
- Landfill gas expansion construction to take place July – October, 2017
 - includes 24 wells and 3,500 metres of piping
 - expect to collect an additional 1,000 standard cubic feet per minute
 - will collect gas from northern leachate manholes

Odour, Noise, and Nuisance Management Cont'd

- New lime mud berm along Brady will help to reduce noise, odours, and litter
- Continue to monitor wells for odours
- Continue to use portable fencing and work with New Directions for litter control

Leachate and Surface Water Management

- Leachate study to be finalized in July, 2017 and includes
 - Brady Road Resource Management Facility
 - Summit Road
 - Saskatchewan Avenue
 - Kilcona Park
- Draft master plan for BRRMF in final review by the City, to be completed July, 2017
- Surface water management plan is complete

Access Management and User Experience

- Radio station (92.7 FM) at the depot is operational
- Footage for YouTube videos has been filmed
- Continue to use live web updates for clean fill (commercial haulers)
 - have live update capability for current wait times at the depot

Research Partnerships and Resource Development

- Working with the International Institute for Sustainable Development (IISD) and Wastewater Services to compost cattails from stormwater ponds
- Ongoing discussions to convert landfill gas to electricity
- Continuing discussions on possibility to divert mattresses from landfill
- 34,029 tonnes of yard waste composted in 2016 (increase from 33,475 tonnes in 2015)

Research Partnerships and Resource Development Cont'd

- SYLVIS soil manufacturing pilot project – March 2017
 - processed 2% of annual biosolids (800 tonnes) in 18 days
 - produced 500 cubic metres of soil, to be used on-site at final cover
 - soil produced will be monitored throughout 2017
 - program would be able to process biosolids in winter
 - final report on project due in 2018

SYLVIS Soil Manufacturing Pilot

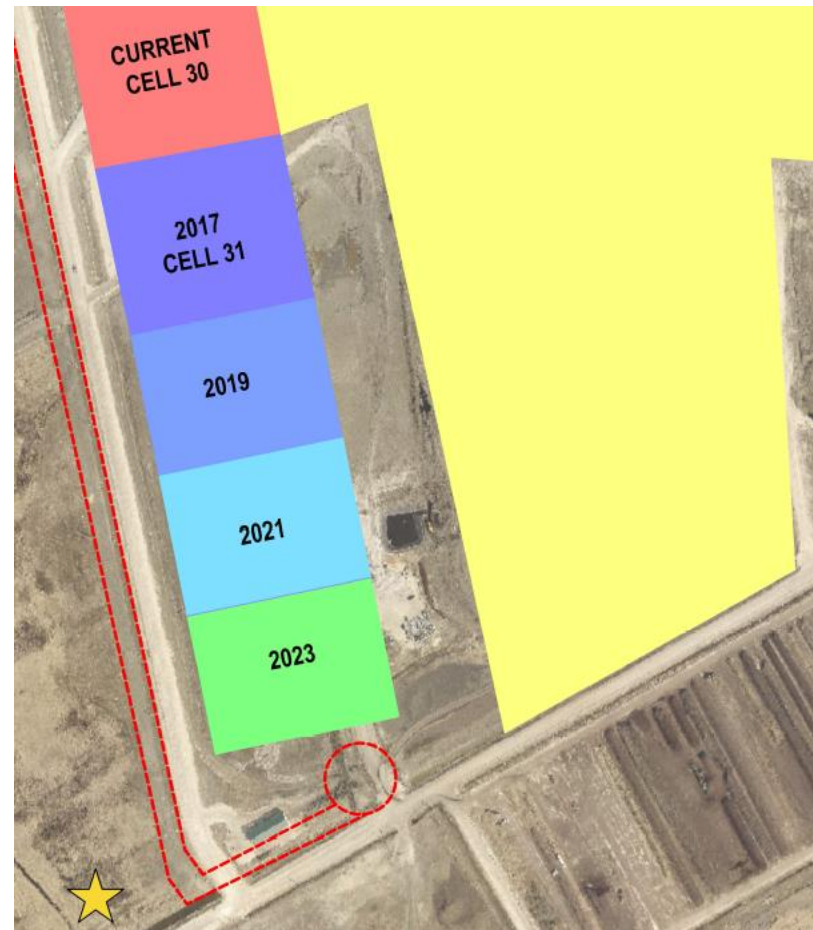


Long-term Site Planning

- Construction of new administration building at Brady will begin in July, 2017
 - will be informed by LEED principles to use green methods
- Continue to review the refurbishing/rebuilding of Charette Road
 - design contract awarded and construction to begin in 2018
 - paved surface will help reduce noise and dust
- Construction of centralized leachate tank will begin July, 2017

Long-term Site Planning Cont'd

- New cell construction to begin July, 2017
- ★ Indicates location of new leachate tank



Seasonal/Project Updates

- Continuing to work with Wood Anchor to reclaim elm trees and reuse as flooring and furniture
 - 103 metric tonnes of elm wood has been diverted
- Yard waste and biosolids composting continues
 - will continue to use material as final cover at Brady to promote vegetation growth
 - will begin to look at other uses in 2018

4R Winnipeg Depot Project Update

- Pacific 4R Winnipeg Depot opened January 26, 2017
 - located at 1120 Pacific Avenue
 - averaged 67 vehicles per day in April
- Panet 4R Winnipeg Depot
 - will be located on Panet Road at Mission Street
 - construction began late May 2017
 - expected to open early 2018

Next Meeting