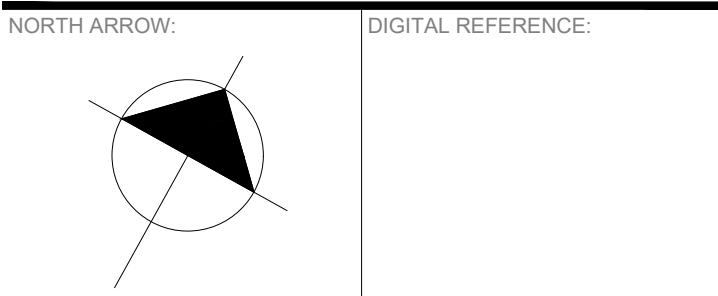




COPYRIGHT NOTICE
THIS DRAWING AND DESIGN IS COPYRIGHT PROTECTED.
DO NOT REPRODUCE OR REVISE WITHOUT WRITTEN
PERMISSION BY ARCHITECTURE49 INC.

SEAL:

THIS BAR IS 25mm LONG WHEN PLOTTED AT
CORRECT SCALE. DO NOT SCALE DRAWINGS.



PROJECT NO.: CA0051966.1097 CONTRACT NO.
DRAWN BY: SM CHECKED BY: BB APPROVED BY: --
KEYPLAN:

1 2025/09/05 ISSUED FOR ADDENDUM #1
0 2025/08/18 ISSUED FOR TENDER
NO. DATE ISSUED

SWCC RICHMOND SPRAY
PAD

DRAWING TITLE

LAYOUT PLAN

DRAWING NO. L102

PRINT DATE: 2025-09-05

LEGEND:

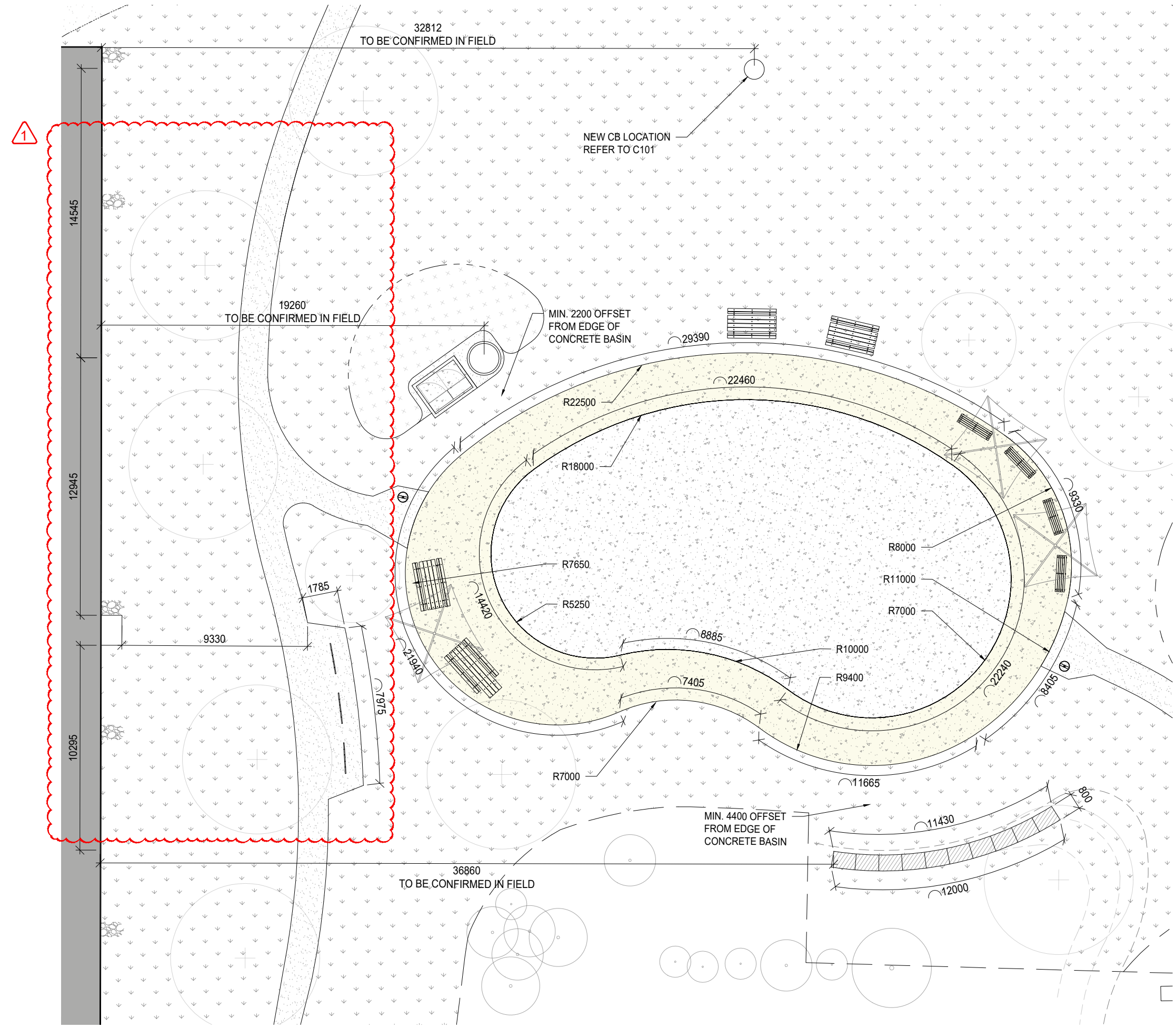
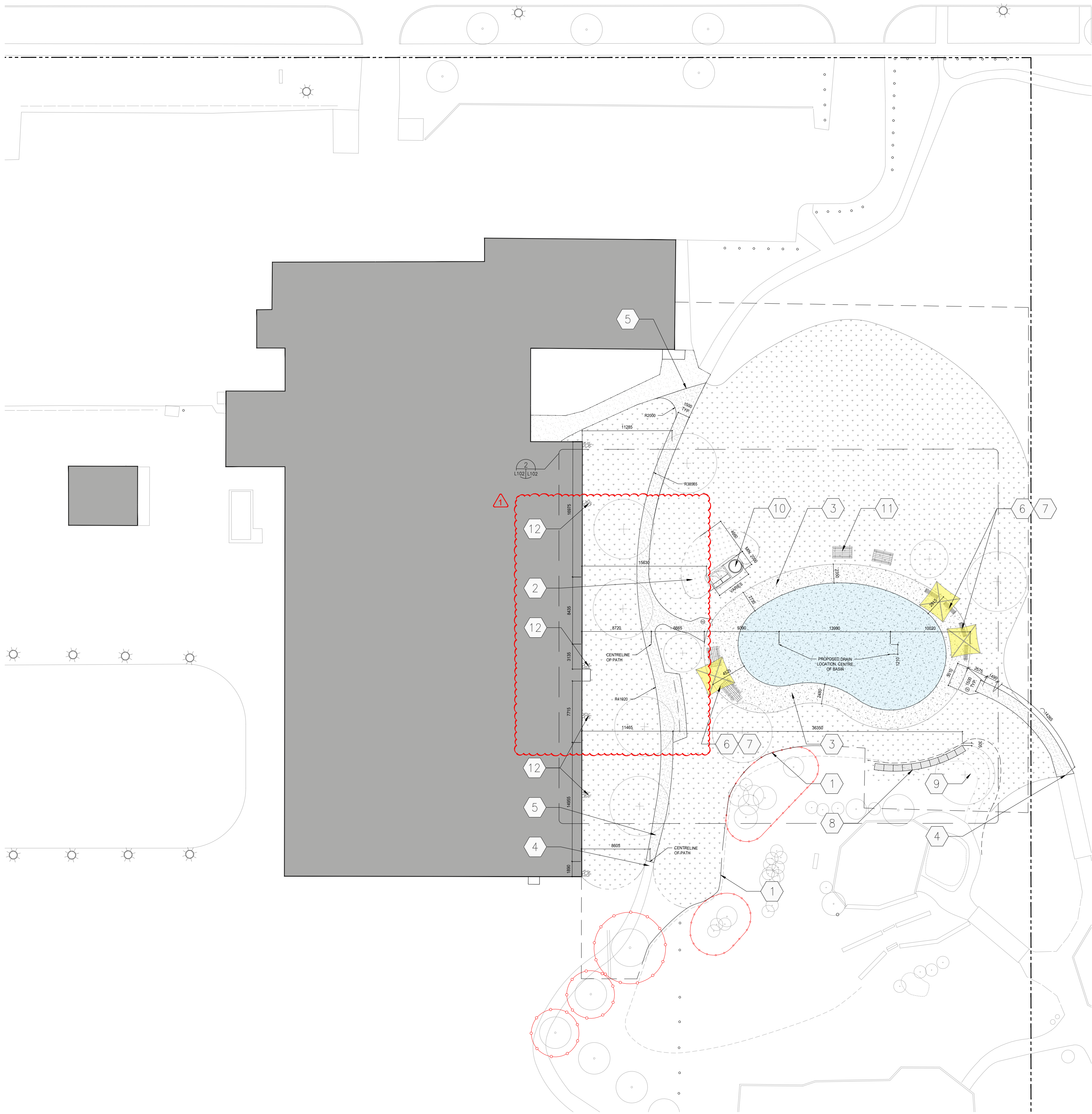
- PROPERTY LINE
- LIMIT OF WORK
- EXISTING BUILDING(S)
- EXISTING TREES TO REMAIN
- THICKENED EDGE CONCRETE PAD
- GRANULAR PATH
- PLANTING BED
- SOD
- EXISTING BOLLARDS
- TREE PROTECTION FENCING (REFER TO SPECIFICATIONS)

KEYNOTES:

- SOUTHERN LIMITS OF WORK TO BE OFFSET APPROX. 300mm FROM TOE OF EXISTING BERM
- PLANTING BED TO BE ESTABLISHED AROUND VALVE CABINET/WATER METER PAD, MAINTAIN MIN. 2400mm OFFSET FROM GRANULAR SURFACING. VERIFY LAYOUT IN FIELD WITH LANDSCAPE ARCHITECT PRIOR TO EXCAVATION
- MAINTAIN MIN. 1800mm CIRCULATION PATH/OVERSPRAY AREAS
- CENTRELINE OF GRANULAR PATH TO ALIGN WITH EXISTING GRANULAR PATH + BOARDWALK, VERIFY IN FIELD
- WHERE GRANULAR PATH ABUTS WOODEN BRIDGE, EXTENTS OF PATH TO ALIGN WITH BRIDGE PROFILE, 3000mm TAPER
- GRANULAR PATH EXTENSION TO TAPER INTO EXISTING, TOP-UP SURFACING TO KEEP TRANSITION LEVEL
- SHADE SAILS TO BE CENTERED ON SEATING NOTES, INSTALLED AND LAID OUT PER MANUFACTURER'S INSTRUCTIONS
- POSTS TO BE OFFSET MIN. 750mm FROM EDGE OF CONCRETE PAD
- SEATING NODES PER DETAIL 6/L400, TO RESPECT SCD 136A DIMENSIONING
- LIMESTONE SEATING BLOCKS, APPROX. 550x800x1200MM, VERIFY LAYOUT IN FIELD WITH LANDSCAPE ARCHITECT PRIOR TO EXCAVATION
- SODDED BERM TO BE FEATHERED INTO EXISTING BERM, VERIFY IN FIELD WITH LANDSCAPE ARCHITECT PRIOR TO EXCAVATION
- 1700mm CSP WATER METER PIT TO HAVE RUBBER SURFACING APPLIED TO LID
- PICNIC TABLES IN SOD TO BE OFFSET MIN. 750mm FROM EDGE OF CONCRETE, SECURED WITH ONE DUCKBILL ANCHORS
- SPACING OF RIPRAP RAINWATER PADS TO BE CENTERED ON LEADERS AND SUMP PUMP DISCHARGES, VERIFY IN FIELD

LAYOUT NOTES:

- CONTRACTOR TO CONFIRM ALL DIMENSIONS AND REPORT ANY DISCREPANCIES TO CONTRACTOR ADMINISTRATOR PRIOR TO CONSTRUCTION.
- LAYOUT TO BE APPROVED BY CONTRACT ADMINISTRATOR PRIOR TO ANY CONSTRUCTION OR REMOVALS.
- ALL DIMENSIONS ARE IN METRIC UNLESS OTHERWISE NOTED.
- CONTRACTOR IS RESPONSIBLE FOR ALL EXCAVATIONS, REMOVALS, DISPOSALS AND ROUGH GRADING AS REQUIRED TO CONSTRUCTION ALL WORKS AS SHOWN ON ALL PLANS, DETAILS AND SPECIFICATIONS.
- LOCATION OF ALL UTILITIES SHOWN FOR ILLUSTRATION ONLY. CONTRACTOR MUST CONTACT ALL UTILITIES REGARDING RULES FOR WORKING IN THE AREA OF THE UTILITIES PRIOR TO COMMENCEMENT OF ANY WORK. CONTRACTOR MUST CONFIRM LOCATION OF ALL UTILITIES PRIOR TO CONSTRUCTION.
- ALL EXISTING ROADS, SIDEWALKS, CURBS, FENCING, PAVING, SODDED RIGHT-OF-WAY, APPROACHES, ETC. TO REMAIN TO BE PROTECTED DURING CONSTRUCTION TO THE CITY OF WINNIPEG STANDARDS AT THE CONTRACTOR'S OWN COST.
- ALL EXISTING TREES, SHRUB BEDS, MULCH BEDS, AND SOD TO REMAIN TO BE PROTECTED DURING CONSTRUCTION TO CITY OF WINNIPEG STANDARDS. AREAS DAMAGED DURING CONSTRUCTION TO BE REPAIRED TO CITY OF WINNIPEG STANDARDS AT THE CONTRACTOR'S OWN COST.
- CONTRACTOR TO LAY OUT CENTRELINE OF PATHS AND PERIMETER OF CONCRETE SLAB FOR REVIEW AND APPROVAL BY THE CONTRACT ADMINISTRATOR PRIOR TO CONSTRUCTION.
- LAYOUT OF CONCRETE SLAB TO BE ESTABLISHED FROM PROPOSED DRAIN LOCATIONS PER 1/L102
- THICKENED EDGE CONCRETE SLAB LIMITS TO BE EXTENTS OF OVERSPRAY AREA.
- CONTRACTOR TO LAY OUT TOE OF BERM EXTENSION FOR REVIEW AND APPROVAL BY THE CONTRACT ADMINISTRATOR PRIOR TO CONSTRUCTION.
- USE SPECIFIED BACKFILL IN ALL TRENCHES RUNNING BELOW ALL STRUCTURES, PAVING, WALKWAYS, ETC.
- REFER TO PLANTING PLAN L201 FOR LAYOUT OF ALL SHRUB BEDS AND TREES.



1 LAYOUT PLAN
L102 1:300

2 ENLARGED LAYOUT PLAN
L102 1:200

BID OPP. NO. 663-2025