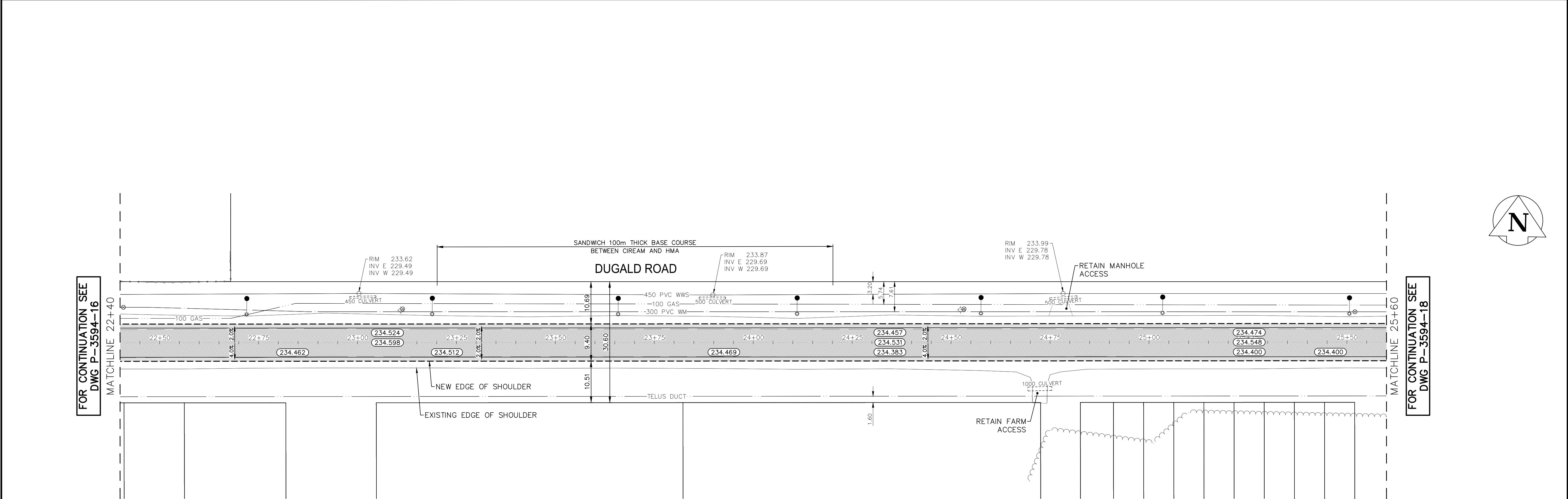
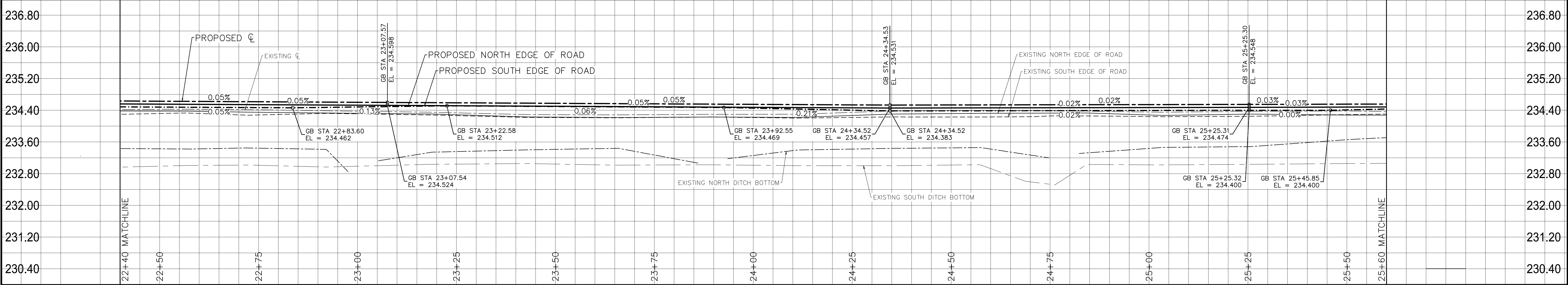


Mar 13, 2025 -- 8:26pm
P:\2024\CA0022818.5512 - Pavement Renewals Dugald & Plessis\02 Drawings\03_Work_Dwg\CA0022818.5512_Dugald Rd_Plan&Profile.dwg --tab:17 P--3594--17



- NOTES:
1. ALL WORK AND MATERIALS TO BE IN ACCORDANCE WITH THE LATEST REVISION OF THE CITY OF WINNIPEG STANDARD CONSTRUCTION SPECIFICATIONS.
 2. CONTRACTOR TO CONFIRM THE LOCATION OF ALL UTILITIES/SERVICES IN THE FIELD PRIOR TO CONSTRUCTION.
 3. ALL ROADWAY DIMENSIONS SHOWN ARE TO BACK OF CURB.
 4. CONTRACTORS TO TAKE PRECAUTIONARY STEPS TO PROTECT EXISTING TREES WITHIN THE LIMITS OF CONSTRUCTION FROM DAMAGE FROM CONSTRUCTION ACTIVITIES AS OUTLINED IN THE SPECIFICATIONS.
 5. LAMP STANDARDS, HYDRO POLES, AND ANCHORS THAT REQUIRE TEMPORARY SUPPORT, REMOVAL OR REPLACEMENT, TO BE DONE SO AT THE EXPENSE OF THE CONTRACTOR AS NECESSARY.
 6. ADJUST ALL WATER VALVES, HYDRANTS, MANHOLES, AND CATCH BASINS IN WORK AREA TO GRADE.
 7. CONTRACTOR TO VERIFY ALL CULVERTS DIAMETERS AND LENGTHS PRIOR TO ORDERING MATERIAL.
 8. CONTRACTOR TO COORDINATE DIRECTLY WITH LAND OWNERS FOR TIMING OF CULVERT REPLACEMENTS.
 9. ALL TIE-INS AND APPROACHES ARE TO BE TYPE 1A ASPHALT.
 10. GLASS GRID TO BE USED ON CIREAM AND MILL AND FILL SECTIONS.
 11. CONTRACTOR TO MEET MILLING GRADES. MILLING GRADES WILL BE PAINTED BY THE CONTRACT ADMINISTRATOR.
 12. CONTRACT ADMINISTRATOR WILL PROVIDE REVISED GRADES AFTER MILLING AND CIREAM PROCESS.
 13. LIMITS OF ASPHALT TIE-INS ON PRIVATE APPROACHES IN THE MILL AND FILL SECTION TO BE MARKED IN THE FIELD BY CONTRACT ADMINISTRATOR.
 14. BENCHING OF DITCH SLOPES IS REQUIRED IN RECONSTRUCTION SECTIONS.

---	WATER MAIN	---	⊗	VALVE	⊗	---	EDGE OF SIDEWALK	---
---	LAND DRAINAGE SEWER	---	⊕	CURB STOP	⊕	---	EDGE OF ASPHALT	---
---	WASTE WATER SEWER	---	⊙	HYDRO POLE & LIGHT STANDARD	⊙	---	EDGE OF CONCRETE	---
---	HYDRO	---	⊙	LIGHT STANDARD OR TRAFFIC SIGNAL	⊙	---	MODIFIED BARRIER CURB	---
---	GAS	---	⊙	HYDRO POLE / ANCHOR	⊙	---	BARRIER CURB	---
---	COMMUNICATIONS	---	⊙	FENCE	⊙	---	BARRIER CURB AND GUTTER	---
---	SIGNALS	---	⊙	PROPERTY LINE	⊙	---	CONCRETE SIDEWALK	---
○	MANHOLE	●	⊕	TEST HOLE / PAVEMENT CORE	⊕	---	CONCRETE SLAB	---
□	CATCH BASIN/CATCH PIT	■	⊕	ELEVATIONS	(231.000)	---	ASPHALT	---
△	CURB INLET	▼	⊕	CURB RAMP	⊕	---	MILLED SURFACE	---
◇	UTILITIES ADJUSTED	△ □ ○	⊕	DETECTABLE WARNING SURFACE TILE	⊕	---	RAKED ASPHALT	---
◇	HYDRANT	◆	⊕	LEGEND-PLAN	PROPOSED	---	CIREAM	---
---	EXISTING	---	---	LEGEND-PLAN	PROPOSED	---	LEGEND-PLAN	PROPOSED

LOCATIONS APPROVED UNDERGROUND STRUCTURES

SIGNED BY: SUPV UG STRUCTURES DATE

LOCATION OF UNDERGROUND STRUCTURES AS SHOWN ARE BASED ON THE BEST INFORMATION AVAILABLE BUT NO GUARANTEE IS GIVEN THAT ALL EXISTING UTILITIES ARE SHOWN OR THAT THE GIVEN LOCATIONS ARE EXACT CONFIRMATION OF EXISTANCE AND EXACT LOCATION OF ALL SERVICES MUST BE OBTAINED FROM THE INDIVIDUAL UTILITIES BEFORE PROCEEDING

G.B.M. BOLT ON SIGNAL POLE AT DUGALD RD./RAVENLSTON ST. CENTER MEDIAN EAST
ELEV. 235.970

7			
6			
5			
4			
3			
2			
1			
0	ISSUED FOR TENDER	2025-03-14	RB
NO.	REVISIONS	DATE	BY



DESIGNED BY: SS
CHECKED BY: VM
DRAWN BY: RB/SB/LT
APPROVED BY: SS
HOR. SCALE: 1:500
VERTICAL: 1:50
DATE: 2025/FEBRUARY

WSP Canada Inc.
1600 Buffalo Place
Winnipeg, MB R3T 6B8
t. 204.477.6650
f. 204.474.2864
www.wsp.com

ENGINEER'S SEAL

CONSULTANT ACAD DWG. NO.
CA0022818.5512-17

FOR TENDER PURPOSES ONLY
NOT FOR CONSTRUCTION

METRIC

WHOLE NUMBERS INDICATE MILLIMETRES
DECIMALIZED NUMBERS INDICATE METRES

ENGINEERS
GEOSCIENTISTS
MANITOBA
Certificate of Authorization
WSP Canada Inc.
No. 5750



THE CITY OF WINNIPEG
PUBLIC WORKS DEPARTMENT
ENGINEERING SERVICES DIVISION

DUGALD ROAD PAVEMENT RENEWAL - PLESSIS
ROAD TO RAVENHURST STREET

PLAN AND PROFILE
ASPHALT RECONSTRUCTION AND MILL&FILL
STA. 22+40 TO STA. 25+60

CITY DRAWING NUMBER
P-3594-17
SHEET 17 OF 33

TENDER NO.
59-2025