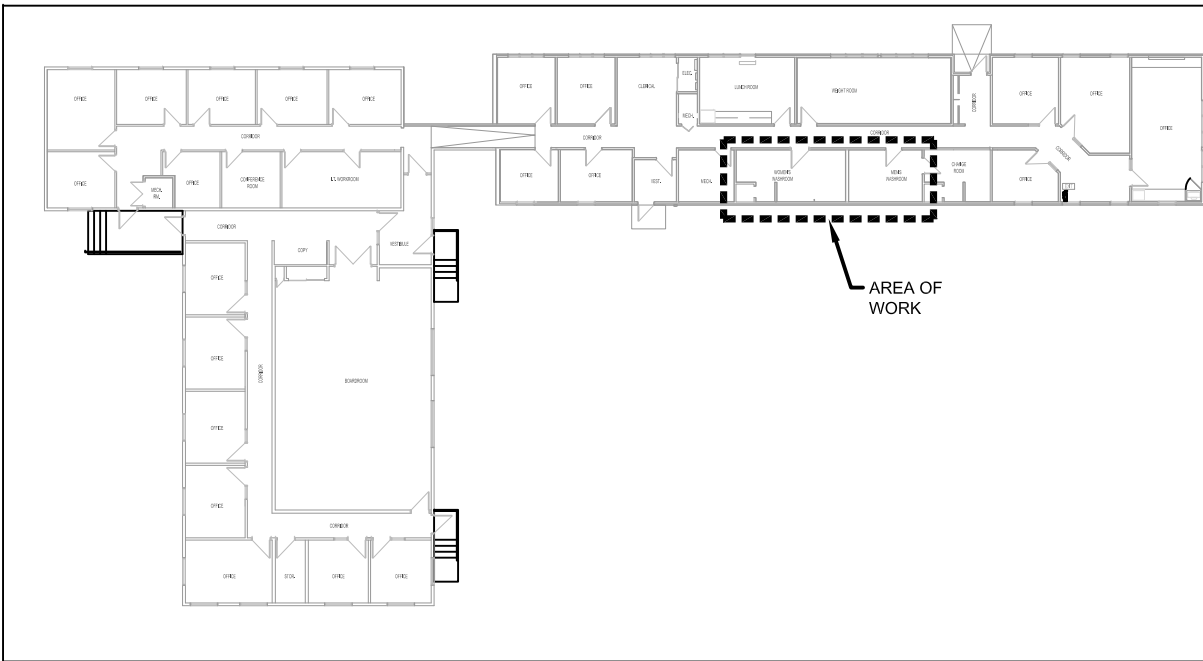


EQUIPMENT SCHEDULE

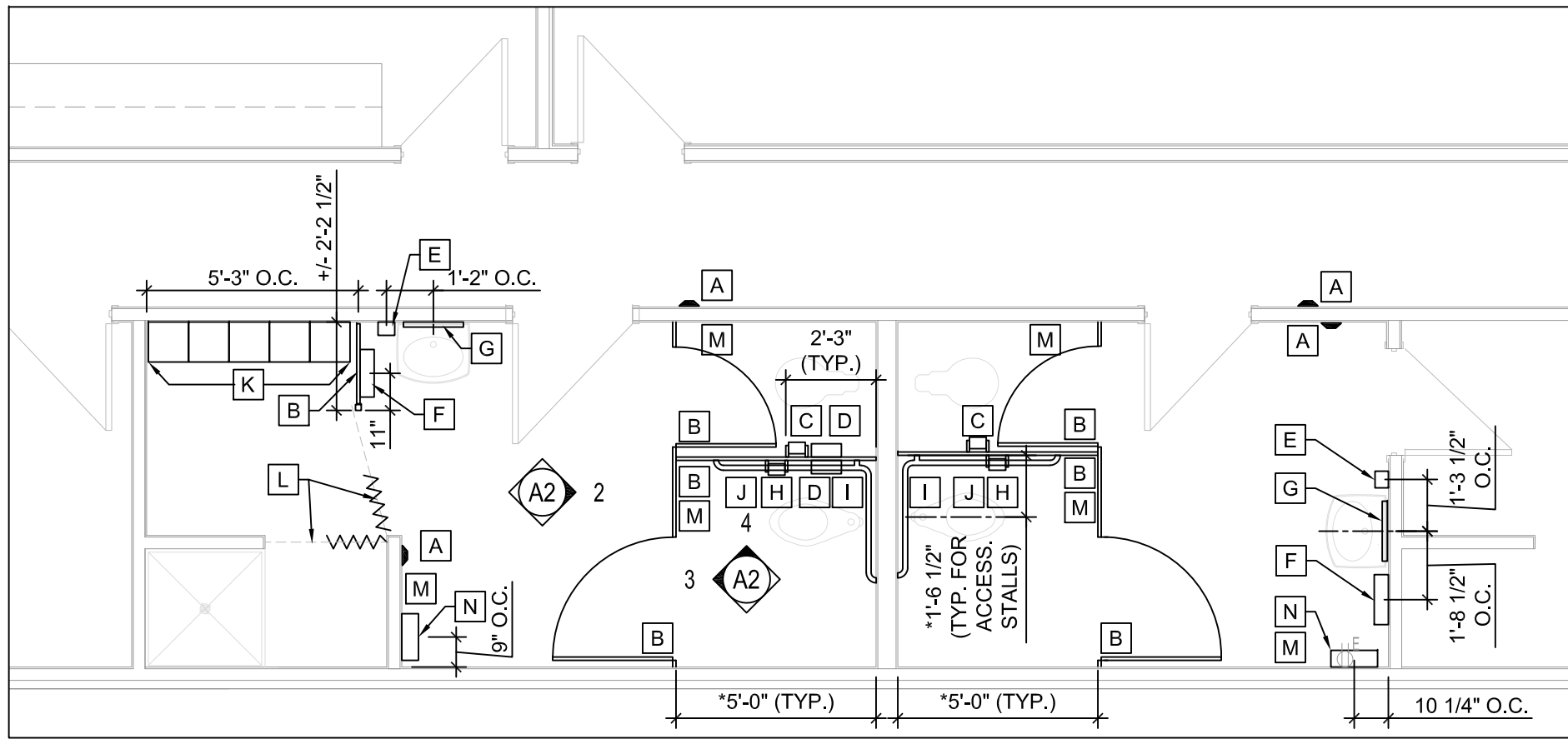
TAG	ITEM	MFR	PRODUCT #	QTY	DESCRIPTION	NOTES
A	DOOR ACTUATOR	WIKK	S-136-3-CLEAR	4	INGRESS'R 6"X36"X1 1⁄2" CLEAR ANODIZED (628) ALUMINUM W/ BLUE LOGO #3	MOUNT @ 4" TO UNDERSIDE
B	TOILET PARTITIONS & SCREENS	HADRIAN	STANDARD SERIES		PARTITIONS: HEADRAIL BRACED W/ 58"H DOORS & PANELS @ 12" AFF, CONTINUOUS CHANNELS, POWDER COATED FINISH C/W STANDARD HARDWARE INCL. THREE (3) PULLS FOR ACCESSIBLE STALLS, TWO (2) PULLS FOR ALL OTHER STALLS. CONTRACT ADMINISTRATOR TO SELECT TWO (2) COLOURS FROM MANUFACTURER'S STANDARD COLOURS. SCREENS: FLOOR TO CEILING WITH POST, 1" THICK, 24" DEEP x 58" HIGH, ANCHORED INTO WALL APPROX. 12" AFF	REFER TO PLANS & ELEVATIONS FOR LOCATIONS & SIZES; SEE FINISH LEGEND FOR DETAILS
C	TOILET TISSUE DISPENSER	BOBRICK	B-76857	2	CLASSIC SERIES - SURFACE-MOUNTED SINGLE ROLL DISPENSER, STAINLESS STEEL W/ SATIN FINISH	REFER TO ELEV. 3/A6, MATCH HEIGHT TO EQUIPMENT ITEM H
D	NAPKIN DISPOSAL	BOBRICK	B-270	2	CONTURA SERIES - SURFACE-MOUNTED, STAINLESS STEEL W/ SATIN FINISH	REFER TO ELEV. 3/A6
E	SOAP DISPENSER	EXISTING		2	SURFACE MOUNTED	TOP OF UNIT @ 46" AFF
F	PAPER TOWEL / WASTE COMBO	BOBRICK	B-3699	2	CLASSIC SERIES - 22-GAUGE TYPE 304 STAINLESS STEEL W/ SATIN FINISH, ALL-WELDED CONSTRUCTION	TOP OF UNIT @ 53" AFF
G	MIRROR	BOBRICK	B-2908	2	18X36" TEMPERED GLASS MIRROR W/ WELDED STAINLESS STEEL FRAME	CENTRE ON LAV. W/ TOP @ 73.5" AFF
H	TOILET TISSUE DISPENSER	EXISTING		2	SURFACE MOUNTED	REFER TO ELEV. 3/A6
I	GRAB BAR	EXISTING		2	34X52" L-SHAPED	REFER TO ELEV. 3/A6
J	GRAB BAR	BOBRICK	B-6806.99X30	2	1 1⁄2" Ø TYPE 304 18-GAUGE STAINLESS STEEL TUBING, SATIN FINISH W/ PEENED GRIP, STRAIGHT	REFER TO ELEV. 3/A6
K	LOCKERS	HADRIAN	EMPEROR SERIES	5	12X12X72" POWDER-COATED METAL C/W 4"H RECESSED METAL BASE, SLOPING TOP, & FRICTION CATCH LATCH. INCLUDE PER UNIT: ONE (1) UPPER SHELF, ONE (1) BOTTOM SHELF W/ DRAIN HOLE, ONE (1) TWO-PRONG HOOK FASTENED BELOW UPPER SHELF. CONTRACT ADMINISTRATOR TO SELECT TWO COLOURS FROM MANUFACTURER'S STANDARD COLOURS	REFER TO FINISH LEGEND
L	CURTAIN & TRACK	CONSTRUCTION SPECIALTIES	6062		STANDARD TRACK & GENERAL CARRIER 1075, C/W GRID CEILING CLIPS, TRADITIONAL CURTAIN, & ANY CARRIER STOPS OR GATES AS REQUIRED. GC TO SITE CONFIRM CURTAIN HEIGHT TO SUIT BOTTOM HEM @ 12" AFF AND 18"H MESH TOP. CURTAIN: 100% POLYESTER W/ 18"H 1⁄2" DIAGONAL NYLON MESH TOP; TOP HEM: STANDARD 1 1⁄4", TRIPLE THICKNESS, REINFORCED W/ INTEGRAL WEB; GROMMETS: 2 PIECE, ROLLED EDGE, RUSTPROOF, NICKEL-PLATED BRASS & MAX SPACED 6" O.C.; BOTTOM & SIDE HEMS: STANDARD 1 1⁄4" WIDE, DOUBLE TURNED TRACK: 1 3⁄8" (34.93MM) WIDE X 3⁄4" (19.05MM) HIGH; 060" (1.52MM) THICKNESS	12" AFF TO UNDERSIDE OF BOTTOM HEM; GC TO SITE CONFIRM TRACK LENGTHS, CUT ON SITE TO SUIT; REFER TO FINISH LEGEND
M	COAT HOOK	BOBRICK	B-983	6	VANDAL-RESISTANT COLLAPSIBLE HOOK; 14-GAUGE TYPE 304 STAINLESS STEEL W/ SATIN FINISH; RELEASE @ 40LBS	45" O.C. AFF, CONFIRM LOC'N W/ CA
N	SHELF	BOBRICK	B-295X14	2	5X14" 18-GAUGE TYPE 304 STAINLESS STEEL W/ SATIN FINISH, HEMMED FRONT EDGE W/ 19MM RETURN EDGES	TOP @ 45" AFF



KEY PLAN  
1/128" = 1'-0"

GENERAL NOTES

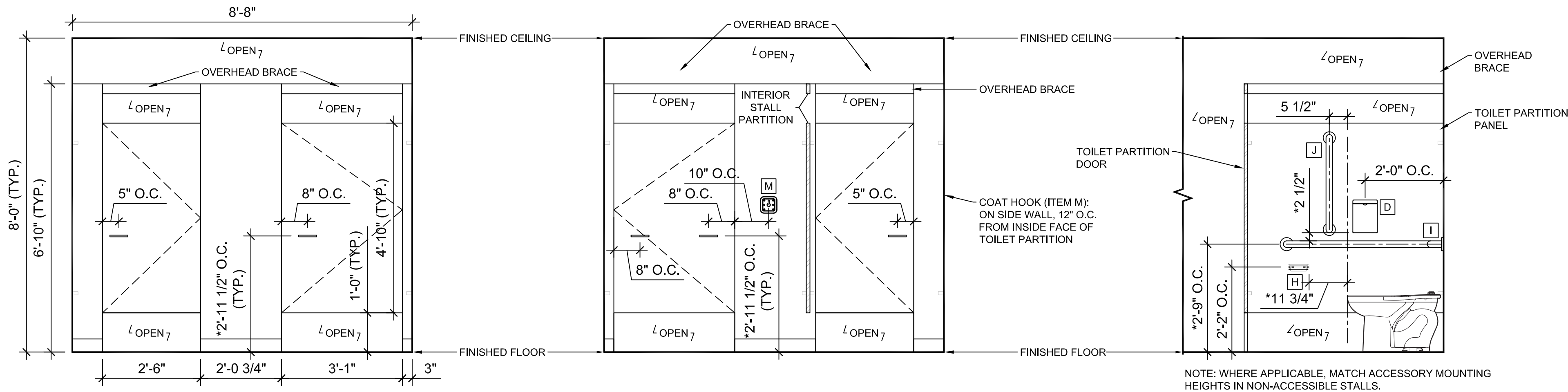
- THESE DRAWINGS SHALL NOT BE SCALED.
- THE CONTRACTOR SHALL VISIT THE SITE AND SATISFY ONESELF ALL DIMENSIONS, DATUM AND DETAILED INFORMATION SHOWN ARE CORRECT.
- THE CONTRACTOR IS TO REVIEW AND COORDINATE ALL ARCHITECTURAL, MECHANICAL, ELECTRICAL AND STRUCTURAL DRAWINGS FOR ADDITIONAL OPENINGS THROUGH FLOORS, WALLS, AND CEILINGS FOR DUCT, PIPE & ELECTRICAL RISERS AND ALL OPENINGS NOT SHOWN ON DRAWINGS.
- ALL OPENINGS THROUGH FIRE ASSEMBLIES ARE TO BE FIRE STOPPED AND SEALED WITH ULC APPROVED FIRE STOPPING TO MAINTAIN THE INTEGRITY OF THE FIRE SEPARATION, AND PROVIDE A SMOKE-TIGHT BARRIER.
- ALL PRODUCTS AND MATERIALS TO BE USED AND INSTALLED SHALL CONFORM WITH MANUFACTURER'S SPECIFICATIONS & APPLICABLE CODES.
- THE CONTRACTOR SHALL BE RESPONSIBLE TO PATCH AND MAKE GOOD ALL EXISTING CONSTRUCTION AFFECTED BY THE REMOVAL OF ALL ITEMS FORMING THE PART OF THE RENOVATION WORK.
- WHERE NEW FLOORING AND BASE IS TO BE INSTALLED IN EXISTING AREAS (REFER TO FLOOR PLAN AND ROOM SCHEDULE) THE EXISTING FLOORING SURFACE AND BASE MUST BE REMOVED, UNLESS OTHERWISE NOTED. ALL FLOOR SURFACES SHALL BE PREPARED IN ACCORDANCE TO MANUFACTURER'S RECOMMENDATIONS FOR INSTALLATION OF NEW FLOOR.
- WHERE PAINTING OF EXISTING WALLS IS INDICATED ON THE ROOM SCHEDULE, THESE WALLS MUST BE CLEANED OF ANY EXISTING WALL COVERING, PATCHED & PREPARED TO ACCEPT NEW MATERIAL, UNLESS OTHERWISE NOTED.



EQUIPMENT PLAN  
1/4" = 1'-0"

2	-		-
1	-		-
0	ISSUED FOR CONSTRUCTION	CEA	MAY 6 2025
No.	REVISION/DESCRIPTION	BY	DATE

SEAL



ELEVATION - STALL EXTERIOR  
1/2" = 1'-0"

ELEVATION - STALL INTERIOR  
1/2" = 1'-0"

ELEVATION - ACCESSIBLE STALL INTERIOR  
1/2" = 1'-0"

GENERAL ELEVATION NOTES:

- ACCESSORY LOCATIONS SHOWN ARE TYPICAL FOR BOTH WOMEN'S AND MEN'S WASHROOMS.

ASBESTOS

ASBESTOS MAYBE PRESENT BEHIND WALLS, CEILING SPACES & FLOORS. IF ASBESTOS OR ANY HAZARDOUS MATERIAL IS FOUND, STOP WORK IMMEDIATELY AND CONTACT CITY OF WINNIPEG CENTRAL CONTROLS @ 204 986-2351.

2025.05.06	CEA	CEA	INIT	INIT
DATE	DESIGNED	DRAWN	CHECKED	APPROVED

THE CITY OF WINNIPEG  
ASSETS & PROJECT MANAGEMENT  
DEPARTMENT  
MUNICIPAL ACCOMMODATIONS DIVISION  
3-65 GARRY STREET, R3C 4K4

PROJECT  
FLEET MANAGEMENT OFFICES  
WASHROOM RENOVATIONS

770 ROSS AVENUE

SHEET TITLE

PARTIAL MAIN FLOOR PLAN  
EQUIPMENT PLAN & ELEVATIONS

SCALE	PROJECT No:	SHEET No:
AS SHOWN	2024-119	A2

DRAWING SHEET SIZE: D (24" x 36") PLOT 1:1