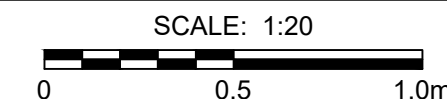


- NOTES:
1. TRANSVERSE SAW CUT EVERY 6 m OR AT PAVEMENT JOINTS.
 2. TRANSVERSE SAW CUTS ARE TO BE A MAXIMUM DEPTH OF 25 mm.
 3. PROFILE CONTROL FOR CURB ON THIS PROJECT IS THE TOP OF ASPHALT AT THE FACE OF CURB.

MOUNTABLE CURB WITH INTEGRAL SPLASH STRIP FOR EXISTING PAVEMENT

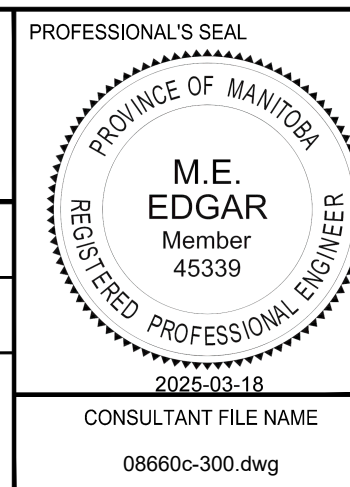


METRIC
WHOLE NUMBERS INDICATE MILLIMETRES
DECIMALIZED NUMBERS INDICATE METRES

LOCATION APPROVED	
UNDERGROUND STRUCTURES	
SUPR. U/G STRUCTURES COMMITTEE	DATE
<p>NOTE:</p> <p>LOCATION OF UNDERGROUND STRUCTURES AS SHOWN ARE BASED ON THE BEST INFORMATION AVAILABLE BUT NO GUARANTEE IS GIVEN THAT ALL EXISTING UTILITIES ARE SHOWN OR THAT THE GIVEN LOCATIONS ARE EXACT. CONFIRMATION OF EXISTENCE AND EXACT LOCATION OF ALL UTILITIES MUST BE OBTAINED FROM THE INDIVIDUAL UTILITIES BEFORE PROCEEDING WITH CONSTRUCTION.</p>	

[illegible]

DESIGNED BY	MEE	CHECKED BY	JGK
DRAWN BY	DML	APPROVED BY	RPB
HOR SCALE	1:100	RELEASED FOR CONSTRUCTION	
VERT SCALE	1:50		
DATE	March 14, 2025	DATE	



Winnipeg

THE CITY OF WINNIPEG
PUBLIC WORKS DEPARTMENT
ENGINEERING DIVISION

**2025 REGIONAL STREET RENEWALS
SOUTHBOUND PEMBINA HIGHWAY
RECONSTRUCTION AND RESURFACING
LA SALLE RIVER TO PERREAULT AVE**

SECTIONS

J, K & L

CITY DRAWING NUMBER	
P-3589-23	
SHEET	OF
23	2

23

TENDER No. 45-2025