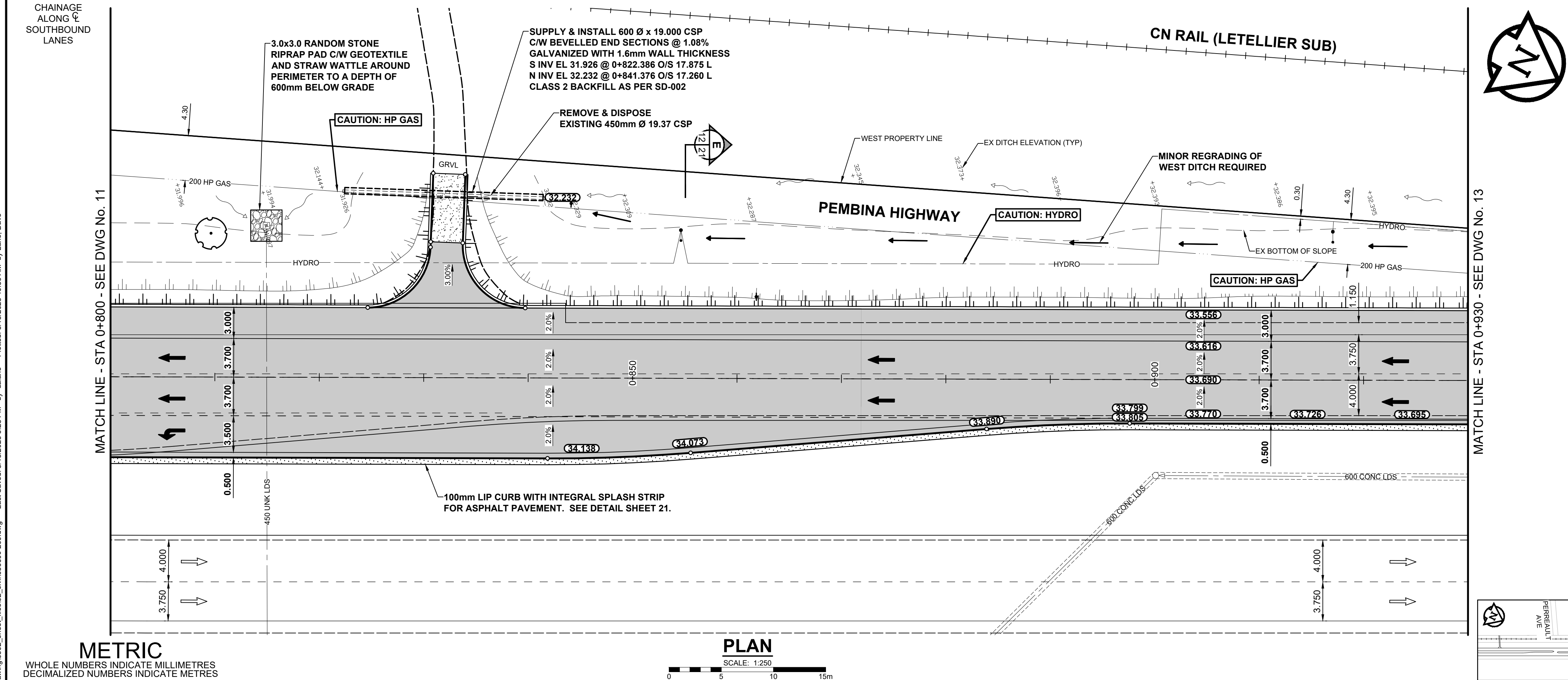


NOTES

- ADJUST MH AND CB RIMS TO NEW GRADES.
- LAMP STANDARDS, HYDRO POLES, AND ANCHORS THAT REQUIRE TEMPORARY SUPPORT, REMOVAL OR REPLACEMENT, TO BE DONE SO AT THE EXPENSE OF THE CONTRACTOR AS NECESSARY.
- CONTRACTOR TO TAKE PRECAUTIONARY STEPS TO PROTECT EXISTING TREES WITHIN THE LIMITS OF CONSTRUCTION FROM DAMAGE FROM CONSTRUCTION ACTIVITIES AS OUTLINED IN THE SPECIFICATIONS.
- CONTRACTOR TO CONFIRM THE LOCATION OF ALL UTILITIES/SERVICES IN THE FIELD PRIOR TO CONSTRUCTION.
- CB SD-023 & SD-024 OFFSETS ARE DIMENSIONED TO BOC. CB SD-025 OFFSETS ARE DIMENSIONED O/C. TF-100 OFFSETS ARE DIMENSIONED TO FACE OF CURB.
- REFER TO TENDER FOR DETAILS REGARDING TRAFFIC MANAGEMENT.
- REFER TO TENDER SPECIFICATIONS FOR CONSTRUCTION REQUIREMENTS NEAR EXISTING GAS MAINS OR SERVICES.
- ADD 200.000 m TO ABBREVIATED ELEVATIONS TO OBTAIN GEODETIC ELEVATIONS.
- BULLNOSES SHALL BE MONOLITHIC CONCRETE AS PER SD-227C, TRANSITION FROM 100mm MOUNTABLE CURB OVER 3.0m.
- PRIVATE APPROACHES SHALL BE FINISHED WITH A MINIMUM 300mm GRANULAR A BASE COURSE AND 60mm SP 1 TO BACK OF RADI.

EXISTING PAVEMENT

- THE CONTRACTOR SHALL BE AWARE THAT SOME OF THE EXISTING PAVEMENT WAS LEFT IN PLACE DURING THE PREVIOUS RECONSTRUCTION OF SOUTHBOUND PEMBINA HIGHWAY.
- THE DEPTH OF THE PAVEMENT IS BETWEEN 450mm AND 600mm BELOW EXISTING GRADE.
- EXISTING PAVEMENT WITHIN THE PROPOSED PAVEMENT STRUCTURE SHALL BE REMOVED AND PAID AS CONCRETE PAVEMENT REMOVAL AND SHALL BE BACKFILLED WITH SUITABLE SITE FILL.



METRIC
WHOLE NUMBERS INDICATE MILLIMETRES
DECIMALIZED NUMBERS INDICATE METRES

EXISTING	LEGEND - PLAN	PROPOSED	EXISTING	LEGEND - PLAN	PROPOSED	EXISTING	LEGEND - PLAN	PROPOSED
HYDRANT	●	◆	LDS / WWS	---	---	CONCRETE	▒	▒
VALVE	●	●	WATER MAIN	---	---	CONC SIDEWALK / MEDIAN	▒	▒
CURB STOP	●	●	GAS	---	---	ASPHALT	▒	▒
MANHOLE	○	●	TRAFFIC SIGNALS	---	---	PAVING STONE	▒	▒
CATCH BASIN / CATCH PIT	□	■	HYDRO / STREET LIGHT	---	---	GRAVEL	▒	▒
CURB INLET	△	▲	COMMUNICATIONS	---	---	PLANING / REMOVAL	▒	▒
POLE	•	•	CURB RENEWAL	---	---	DITCH FLOW	▒	▒
LIGHT STANDARD	•	•	PROPERTY LINE	---	---	TOP OF SLOPE	▒	▒
TRAFFIC SIGNAL POLE	•	•	RAMP CURB	---	---	CULVERT	▒	▒
SURVEY BAR	⊕	⊕	ELEVATIONS	33.000	33.333	SEWER FLOW DIRECTION	▒	▒
GEODETIC BENCH MARK	⊕	⊕	TREE / TREELINE	⊕	⊕	TH-12 TEST HOLE / CORE HOLE	▒	▒

LOCATION APPROVED
UNDERGROUND STRUCTURES

SUPR. U/G STRUCTURES DATE

NOTE:
LOCATION OF UNDERGROUND STRUCTURES AS SHOWN ARE BASED ON THE BEST INFORMATION AVAILABLE BUT NO GUARANTEE IS GIVEN THAT ALL EXISTING UTILITIES ARE SHOWN OR THAT THE GIVEN LOCATIONS ARE EXACT. CONFIRMATION OF EXISTENCE AND EXACT LOCATION OF ALL SERVICES MUST BE OBTAINED FROM THE INDIVIDUAL UTILITIES BEFORE PROCEEDING WITH CONSTRUCTION.

BM 88-012 ELEV 233.291 m	W. side Pembina Hwy., Tbl. in S. Conc. foundation of No. 3525/3527 Pembina Hwy., 1.0 m W. & 0.3 m below brick from S.E. Cor. of Bldg. (Post Office)		
0	ISSUED FOR TENDER	25/03/18	MEE
No.	REVISIONS	YY/MM/DD	BY

Stantec 500 - 311 Portage Avenue, Winnipeg M8 Canada R3B 2B9 Tel. 204.489.5900 Fax. 204.453.9012 www.stantec.com	DESIGNED BY MEE DRAWN BY DML HOR SCALE 1:250 VERT SCALE 1:10 DATE March 14, 2025	CHECKED BY JGK APPROVED BY RPB RELEASED FOR CONSTRUCTION DATE
---	--	--

PROFESSIONAL'S SEAL PROVINCE OF MANITOBA M.E. EDGAR Member 45339 REGISTERED PROFESSIONAL ENGINEER CONSULTANT FILE NAME 08660c-200.dwg

THE CITY OF WINNIPEG PUBLIC WORKS DEPARTMENT ENGINEERING DIVISION 2025 REGIONAL STREET RENEWALS SOUTHBOUND PEMBINA HIGHWAY RECONSTRUCTION AND RESURFACING LA SALLE RIVER TO PERREAULT AVE SOUTHBOUND PEMBINA HIGHWAY STA 0+800 TO STA 0+930	CITY DRAWING NUMBER P-3589-12 SHEET 12 OF 24 12
--	--

**ENGINEERS
GEOSCIENTISTS
MANITOBA**
Certificate of Authorization
Stantec Consulting Ltd.
No. 1301

TENDER No. 45-2025