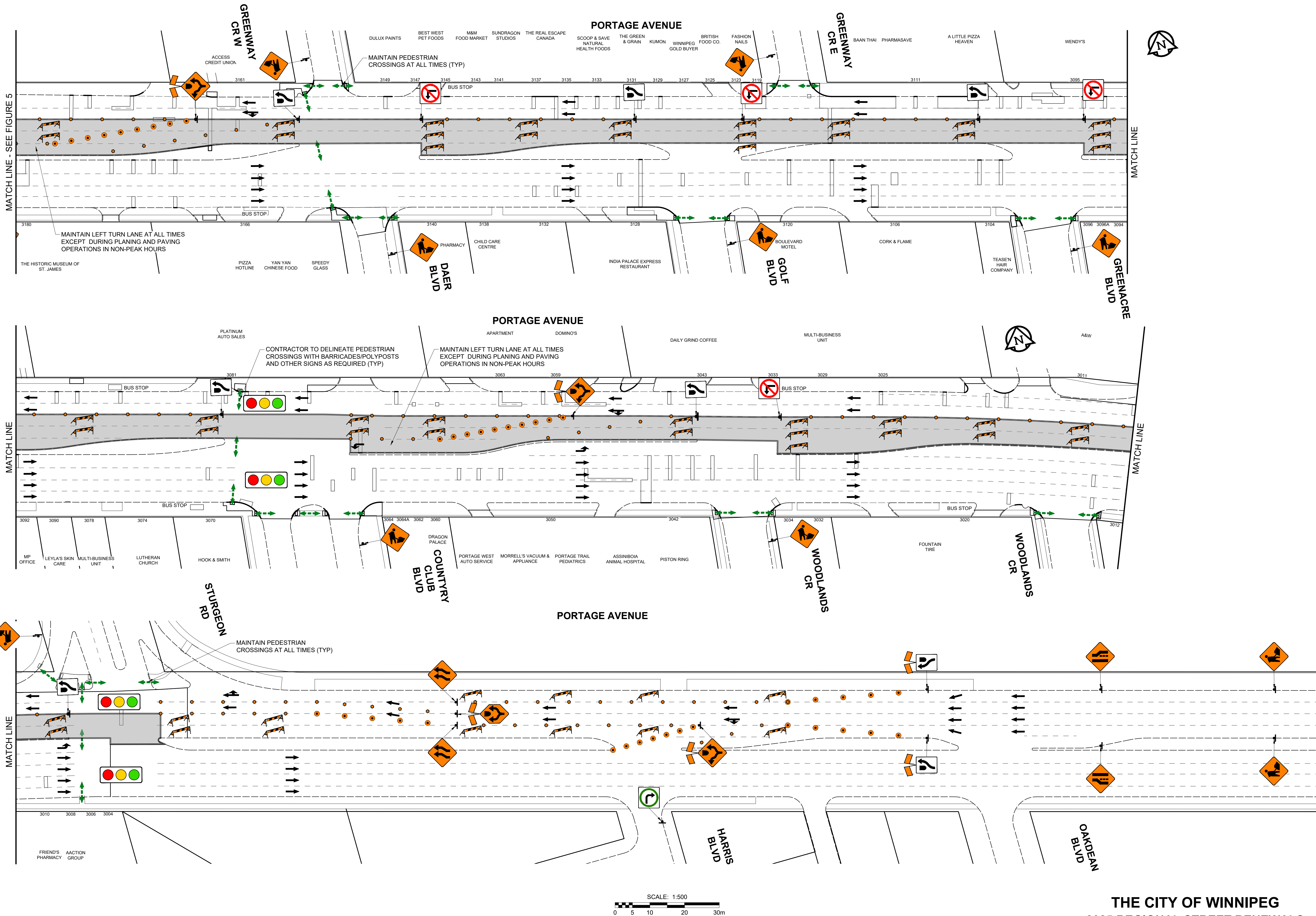


\\s045-cps\ps01\shared_projects\1137086610300_drawing\0302_drawing\0302_sheets\file02_civil\Staging\086510-staging.dwg Last Saved: 5/1/2025 12:32 PM by: alexmitchell Plotted: 5/5/2025 4:08 PM by: Bernard, Kevin A1 SIZE 594mm x 841mm



ISSUED FOR TENDER

STAGE 2
WESTBOUND MEDIAN LANES (2 OF 2)
FIGURE 8

THE CITY OF WINNIPEG
2025 REGIONAL STREET RENEWALS
PORTAGE AVENUE
REHABILITATION AND RELATED WORKS
TRAFFIC STAGING & SIGNAGE

VERSION 1.0