

1. ADJUST MH AND CB RIMS TO NEW GRADES.
2. LAMP STANDARDS, HYDRO POLES, AND ANCHORS THAT REQUIRE TEMPORARY SUPPORT, REMOVAL OR REPLACEMENT, TO BE DONE SO AT THE EXPENSE OF THE CONTRACTOR AS NECESSARY.
3. CONTRACTOR TO REGRADE/RENEW EXISTING PRIVATE SIDEWALKS TO LIMITS AS SHOWN. SIDEWALKS TO BE RENEWED WITH CONCRETE UNLESS NOTED OTHERWISE
4. CONTRACTOR TO TAKE PRECAUTIONARY STEPS TO PROTECT EXISTING TREES WITHIN THE LIMITS OF CONSTRUCTION FROM DAMAGE FROM CONSTRUCTION ACTIVITIES AS OUTLINED IN THE SPECIFICATIONS.
5. CONTRACTOR TO CONFIRM THE LOCATION OF ALL UTILITIES/SERVICES IN THE FIELD PRIOR TO CONSTRUCTION.
6. MODIFIED BARRIER CURB TO BE USED AT ALL INTERSECTION RADII, BACK LANE RADII AND BULLNOSES
7. CONTRACTOR TO OVERLAY DRIVEWAYS TO ENSURE POSITIVE DRAINAGE TO NEW STREET GRADES. FINAL LIMITS TO BE DETERMINED IN THE FIELD BY CONTRACT ADMINISTRATOR
8. CB SD-023 & SD-024 OFFSETS ARE DIMENSIONED TO BOC
CB SD-025 OFFSETS ARE DIMENSIONED O/C.
9. REFER TO TENDER FOR DETAILS REGARDING TRAFFIC MANAGEMENT.
11. MATCH EXISTING GRADES AT DOOR SILLS.
12. ADJUST EXISTING WATER VALVES AND WATER SERVICE CURB STOPS TO GRADE.
13. ADD 200.000 m TO ABREVIATED ELEVATIONS TO OBTAIN GEODETIC ELEVATIONS.
14. SEE SHEET 14 FOR TYPICAL CROSS SECTIONS

1. USE OF VIBRATORY HEAVY EQUIPMENT WITHIN 3.0 METERS HORIZONTALLY OF THE ASBESTOS-CONCRETE WATER MAIN CENTERLINE IS PROHIBITED. THIS RESTRICTION DOES NOT APPLY TO THE USE OF VIBRATORY ROLLERS ON THE PAVEMENT SURFACE LAYER.
2. CONCRETE DEMOLITION AND REMOVAL WITHIN 3.0 METERS HORIZONTALLY OF THE ASBESTOS-CONCRETE WATER MAIN SHALL BE COMPLETED BY SAW CUTTING OR USE OF HAND-HELD JACKHAMMERS. USE OF MACHINE MOUNTED CONCRETE BREAKERS ABOVE ASBESTOS-CONCRETE WATER MAINS IS PROHIBITED.

PLAN
SCALE: 1:250

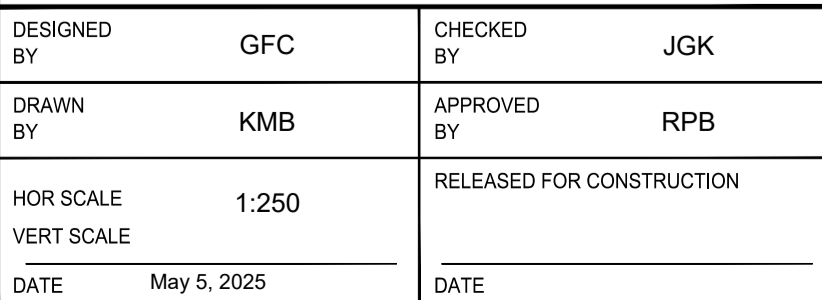


LOCATION APPROVED

UNDERGROUND STRUCTURES

SUPR. U/G STRUCTURES COMMITTEE	DATE
-----------------------------------	------

NOTE:
LOCATION OF UNDERGROUND STRUCTURES
AS SHOWN ARE BASED ON THE BEST
INFORMATION AVAILABLE BUT NO
GUARANTEE IS GIVEN THAT ALL EXISTING
UTILITIES ARE SHOWN OR THAT THE GIVEN
LOCATIONS ARE EXACT. CONFIRMATION OF
EXISTENCE AND EXACT LOCATION OF ALL
SERVICES MUST BE OBTAINED FROM THE
INDIVIDUAL UTILITIES BEFORE PROCEEDING
WITH CONSTRUCTION.

[illegible]

CONSULTANT FILE NAME
08661c-202-01.dwg



CITY DRAWING NUMBER	
P-3588-11	
SHEET	OF
11	1
DRAWING NUMBER	

11