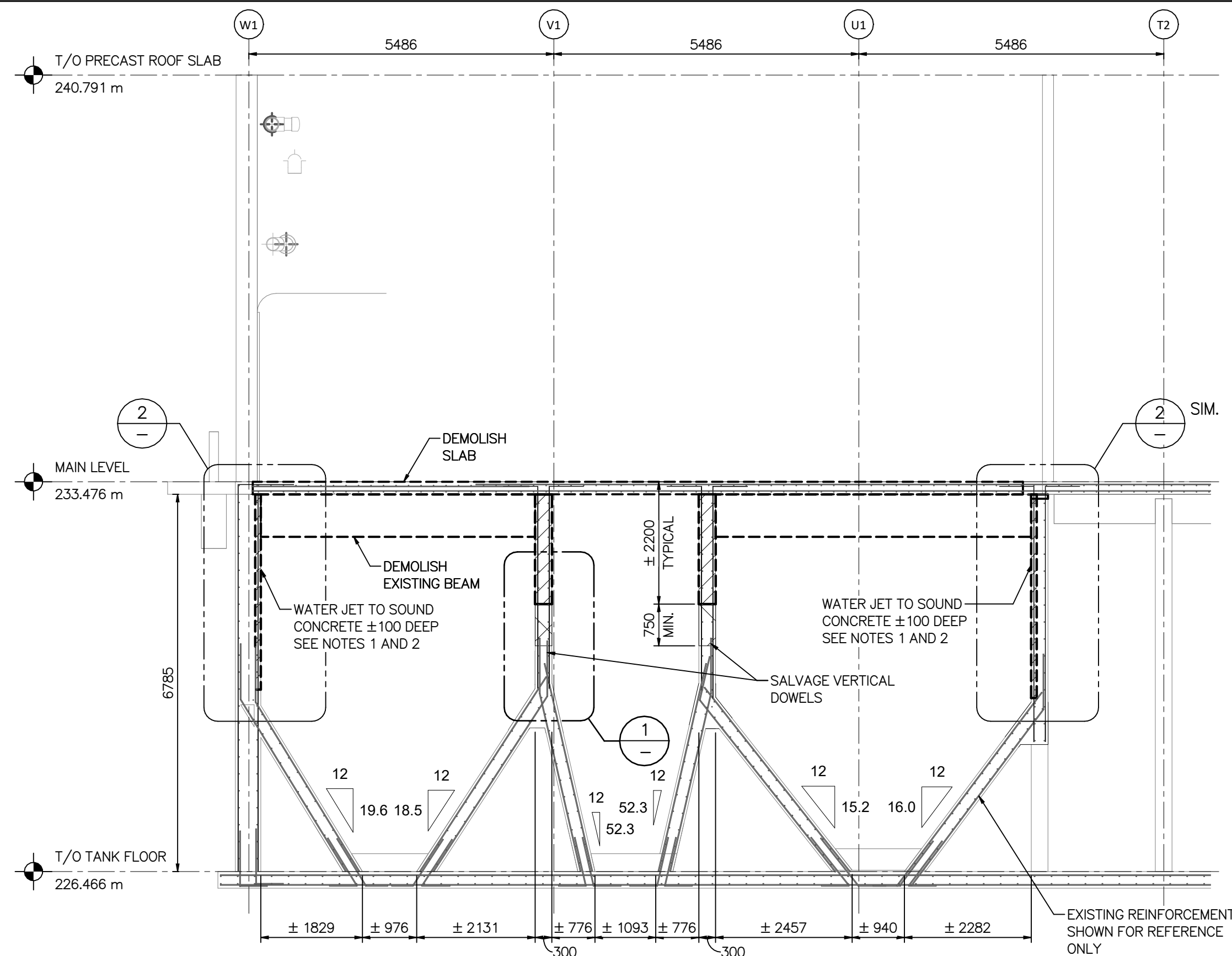
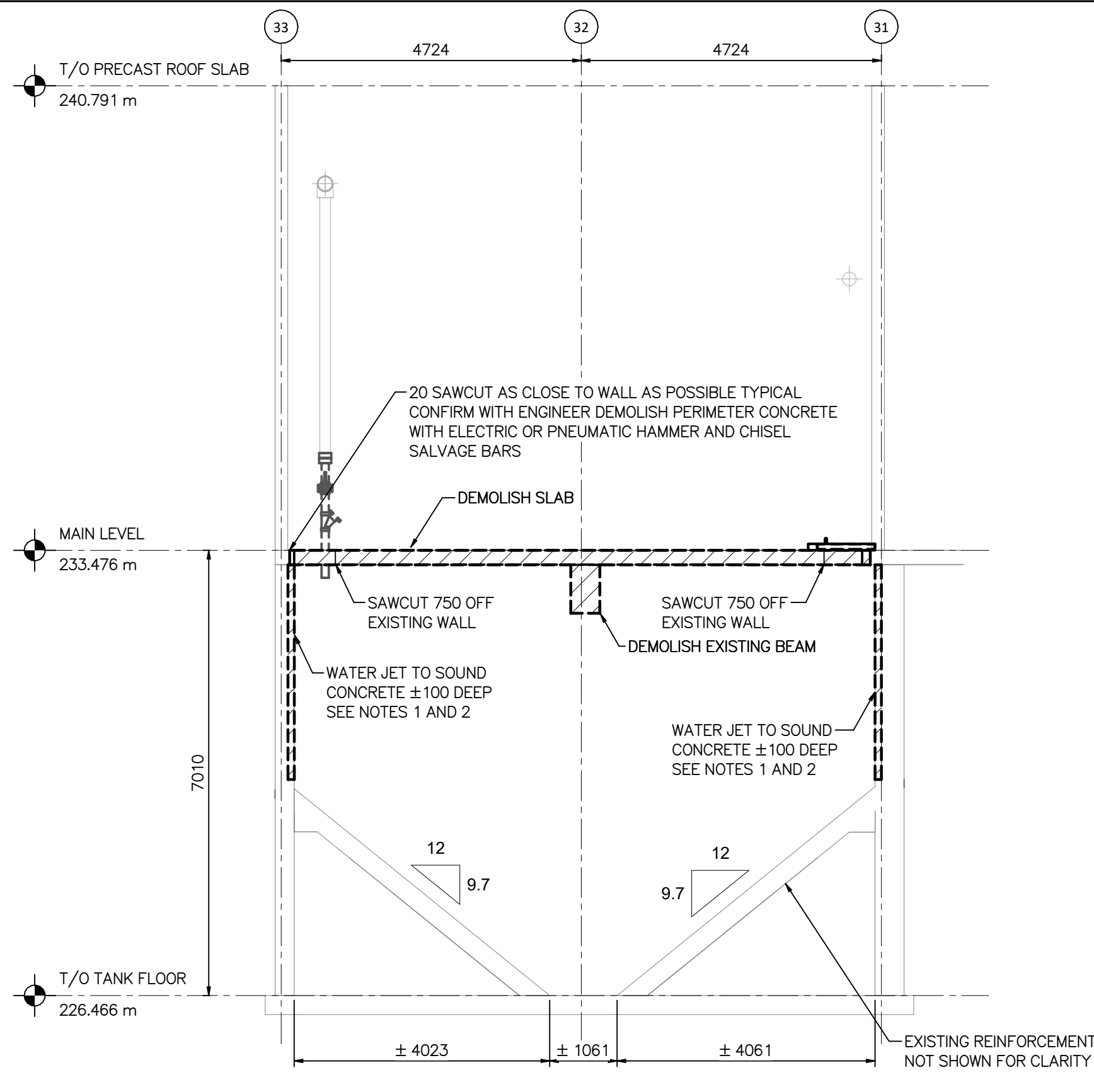


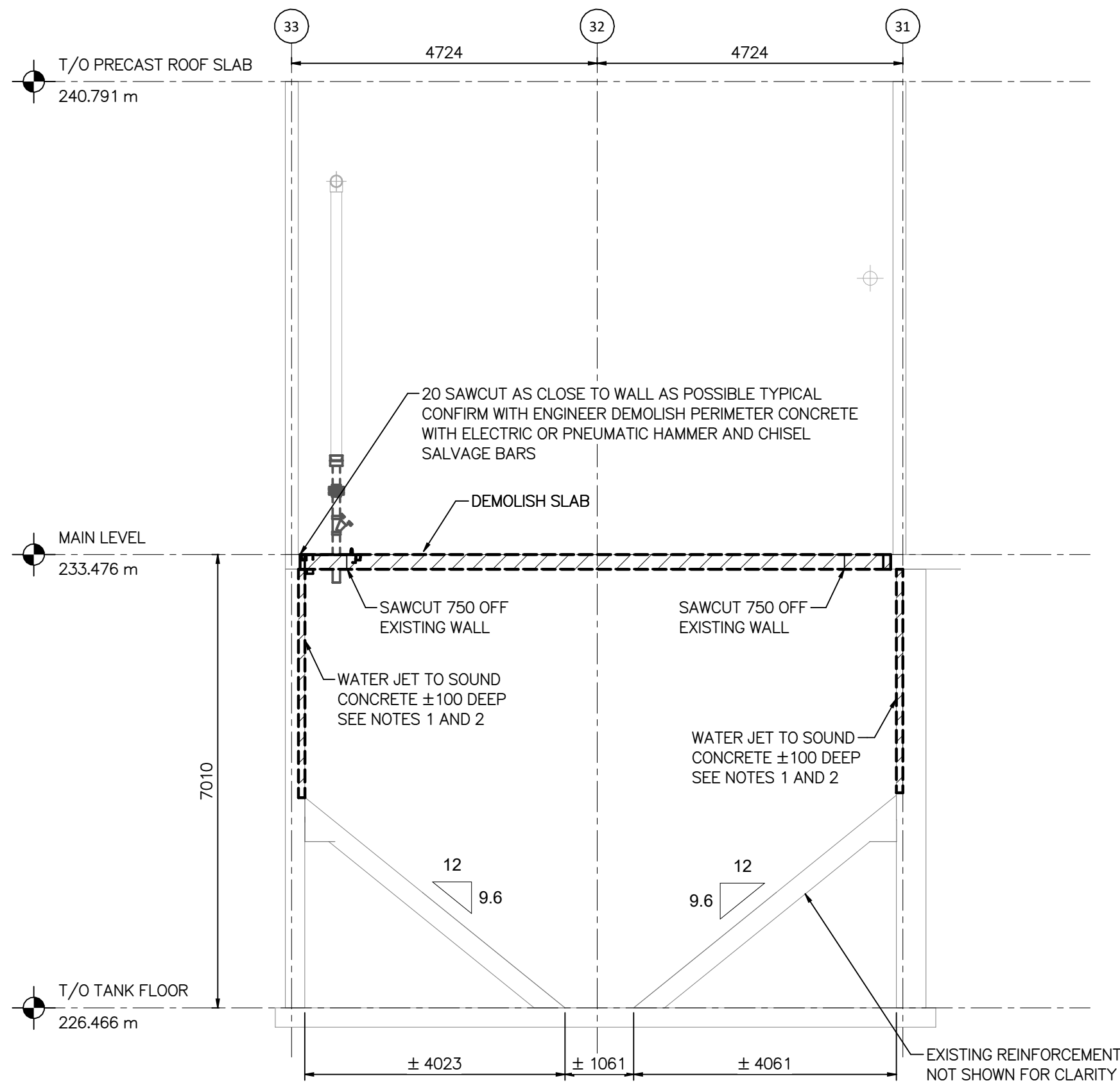
M:\N-Draft\84\00 City of Winnipeg\010 - WSWPCC SEWPCC Sludge Holding Tank Rehabilitation\AutoDesk\Revit\8400-10-00_South Bldg_Struct_V24.rvt



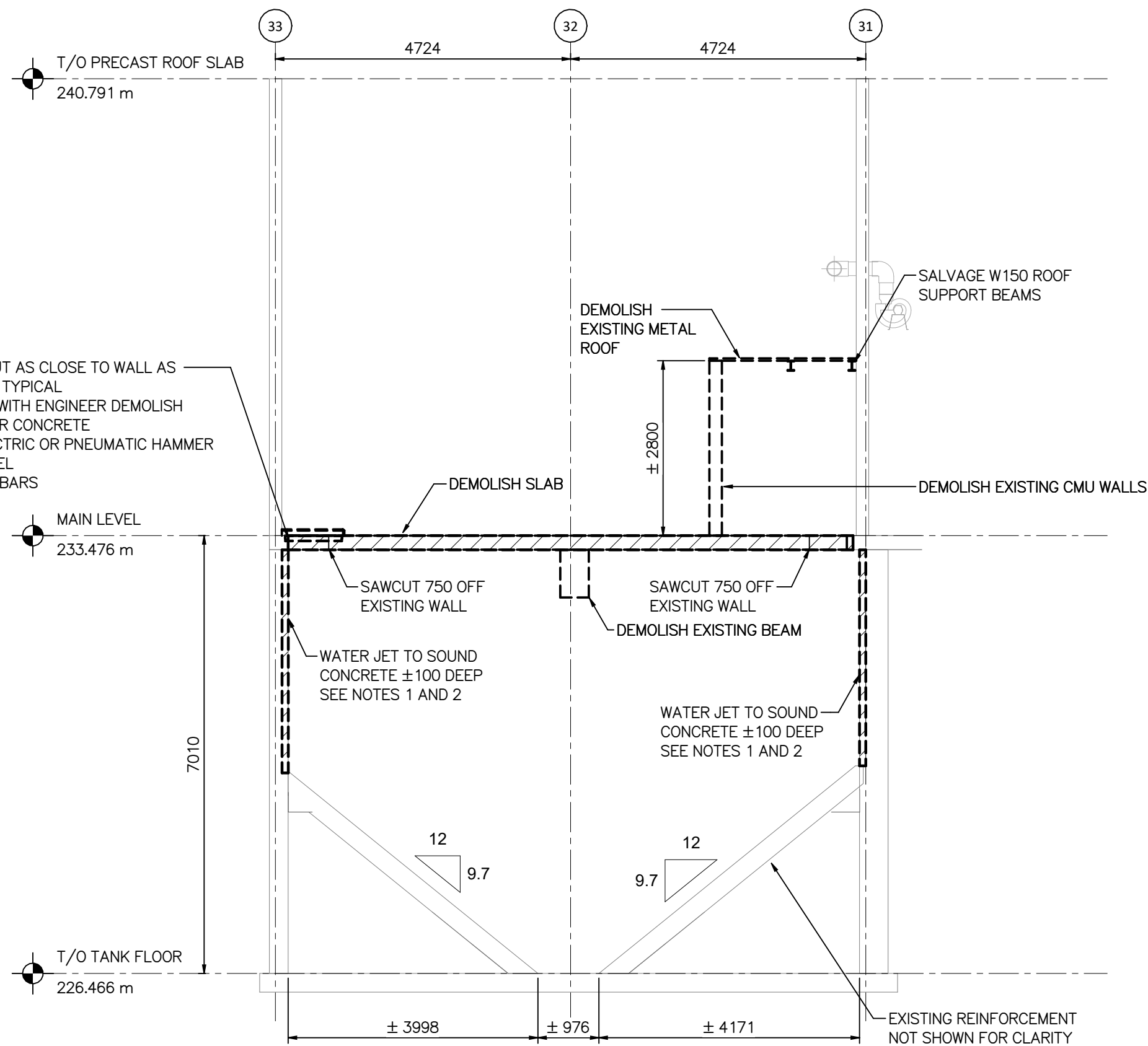
SECTION A
SCALE: 1:75



SECTION B
SCALE: 1:75



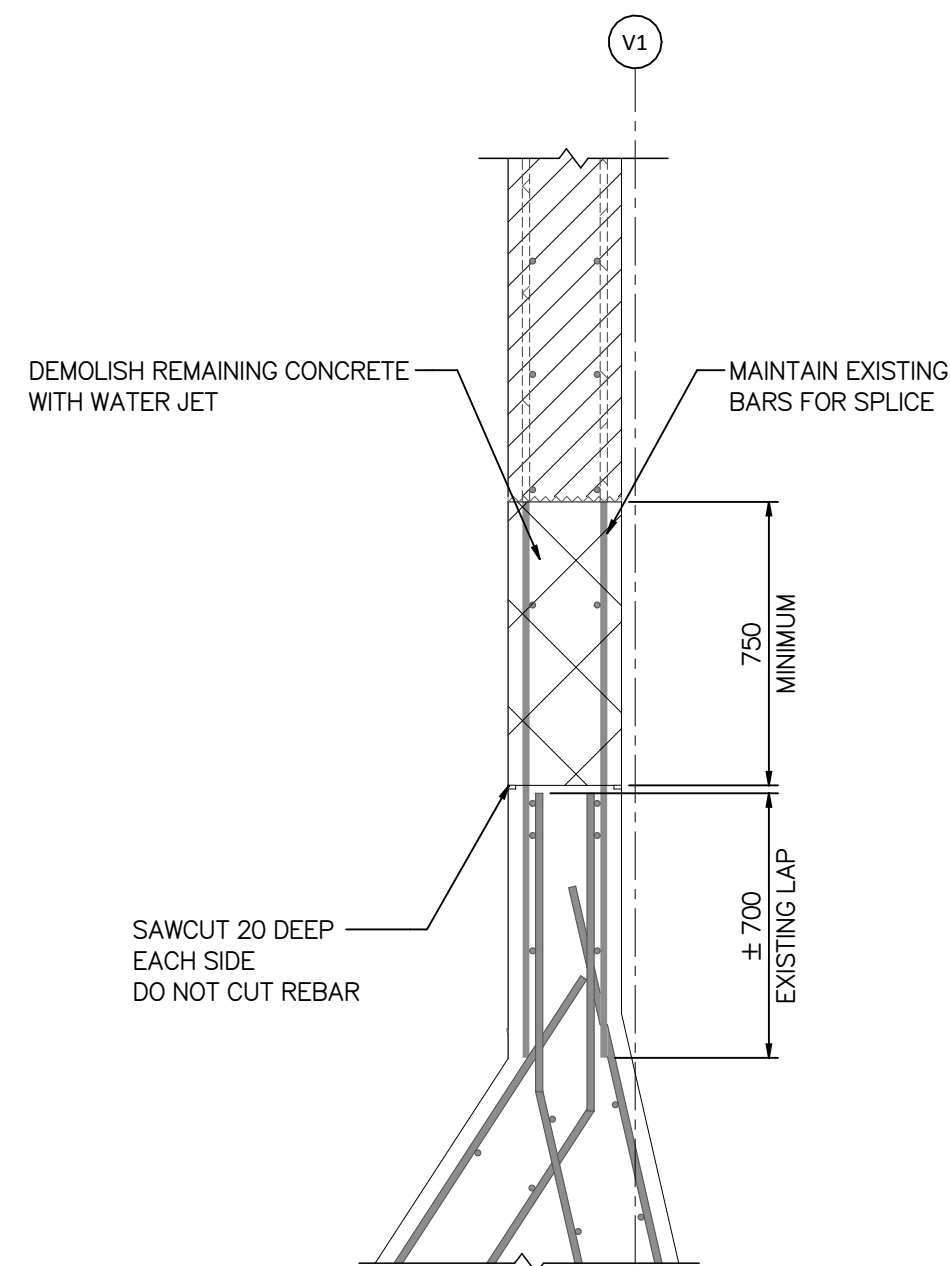
SECTION C
SCALE: 1:75



SECTION D
SCALE: 1:75

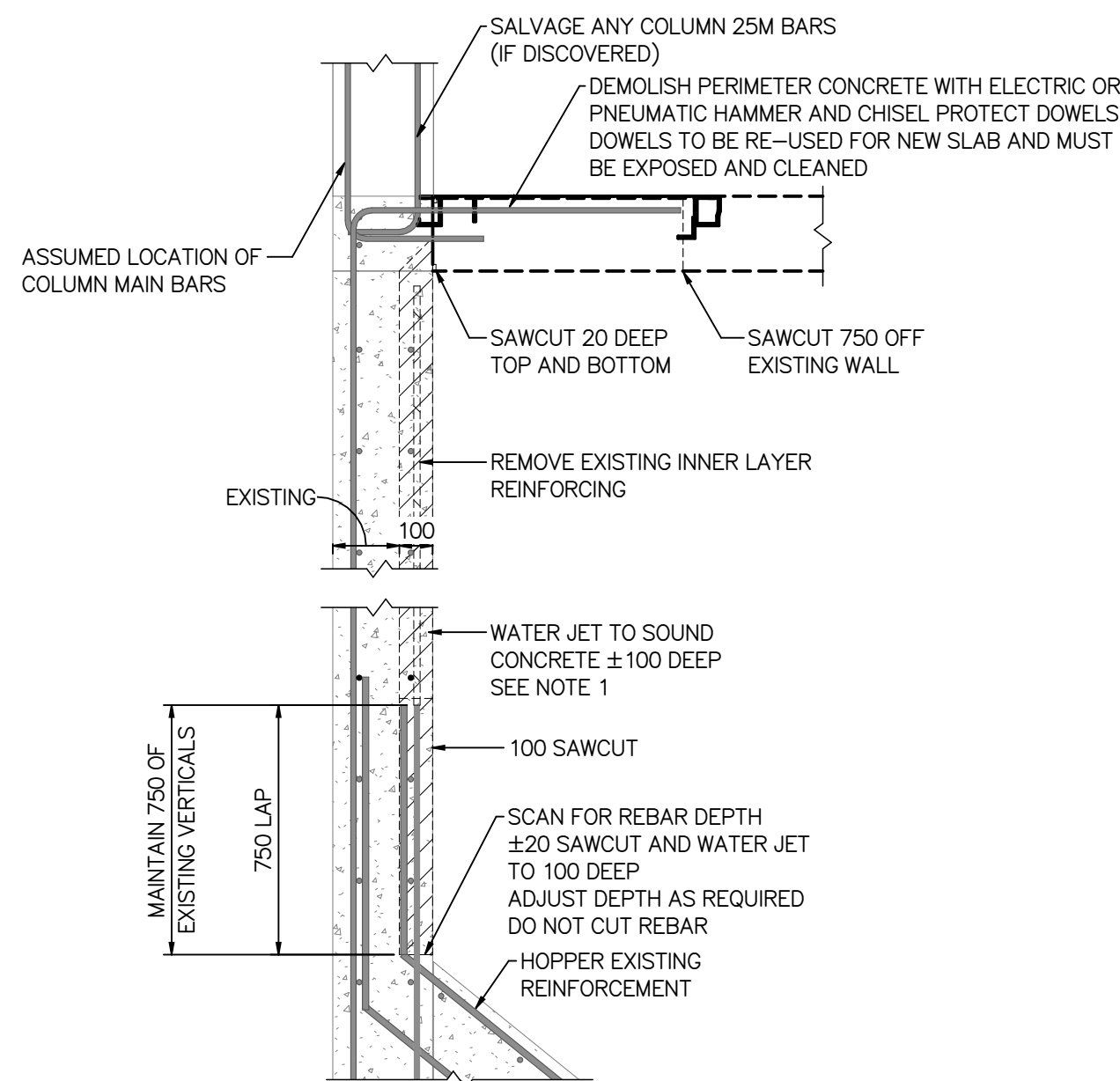
NOTES:

- ENGINEER TO REVIEW AND APPROVE CONCRETE AFTER WALL SECTION REMOVED BEFORE REPAIR WORK BEGINS.
- THE 100mm IS TO BE TAKEN AS A MINIMUM. IF DETERIORATION IS FOUND TO EXTEND BEYOND THE 100mm DEPTH NOTIFY ENGINEER. CONTRACTOR TO CONTINUE TO REMOVE CONCRETE AT THE DIRECTION OF THE ENGINEER. ADDITIONAL PAYMENT TO BE MADE AT THE UNIT RATE.
- ALL DEMOLITION MATERIALS TO BE REMOVED AND DISPOSED AT LAND FILL.



NOTE: PROTECT INTERIOR TANK WALLS AND SUPERSTRUCTURE FROM DAMAGE DURING DEMOLITION OF MAIN FLOOR SLAB. CONTRACTOR IS RESPONSIBLE FOR MAKING GOOD ANY DAMAGE AT THEIR OWN EXPENSE.

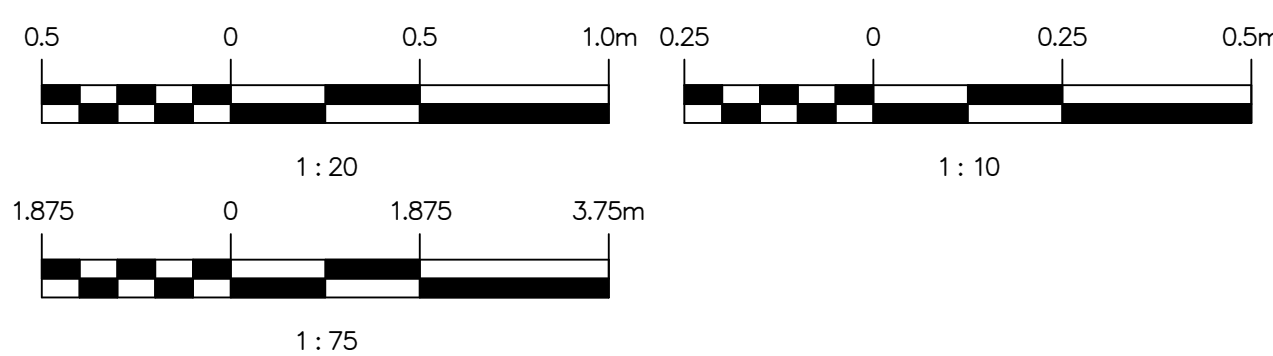
DETAIL 1
SCALE: 1:20



DETAIL 2
SCALE: 1:10

METRIC

WHOLE NUMBERS INDICATE MILLIMETERS
DECIMALIZED NUMBERS INDICATE METERS



**ENGINEERS
GEOSCIENTISTS
MANITOBA**
Certificate of Authorization
MPE, a division of Englobe Corp.
No. 4968 Date: 2025-06-04



DESIGNED BY: B. ANDERSON
CHECKED BY: M. BAKER
DRAWN BY: C. HURD
APPROVED BY: M. BAKER
SCALE: As indicated
RELEASED FOR CONSTRUCTION
DATE: 2025-02-21
BY: DATE:
CONSULTANT NO: 8400-010-00



2025-06-04

REV 00



SOUTH END SEWAGE TREATMENT PLANT (SEWPCC)
SEWPCC SLUDGE HOLDING TANKS REFURBISHMENT
AREA D - FERMENTERS/SLUDGE THICKENERS
DEMOLITION - SECTIONS

CITY DRAWING NUMBER
1-0102-SGAD-DD54
SHEET
00
REV.
A1
SIZE