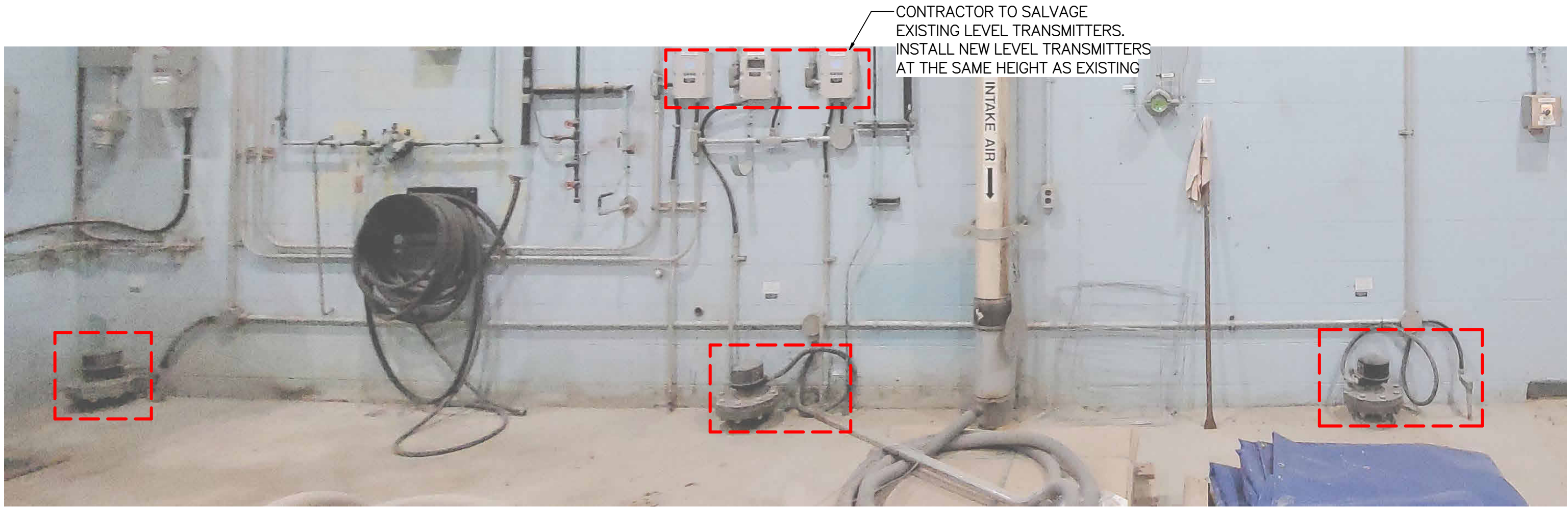
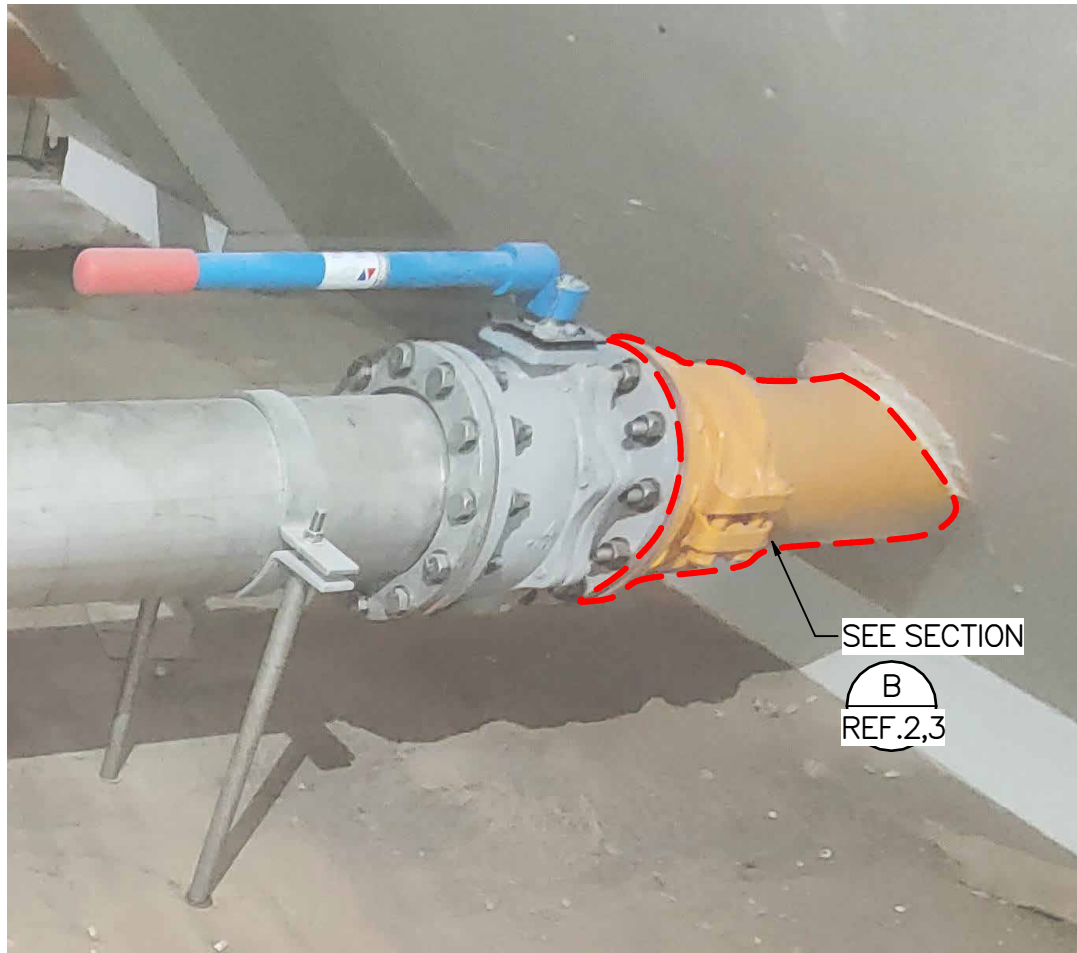


M:\N-Draft\BA\00 City of Winnipeg\010 - SEWPCC SEWPCC Sludge Holding Tank Rehabilitation\AutoDesk\Revit\B400-10-00_South Bldg_Proc_V24.rvt



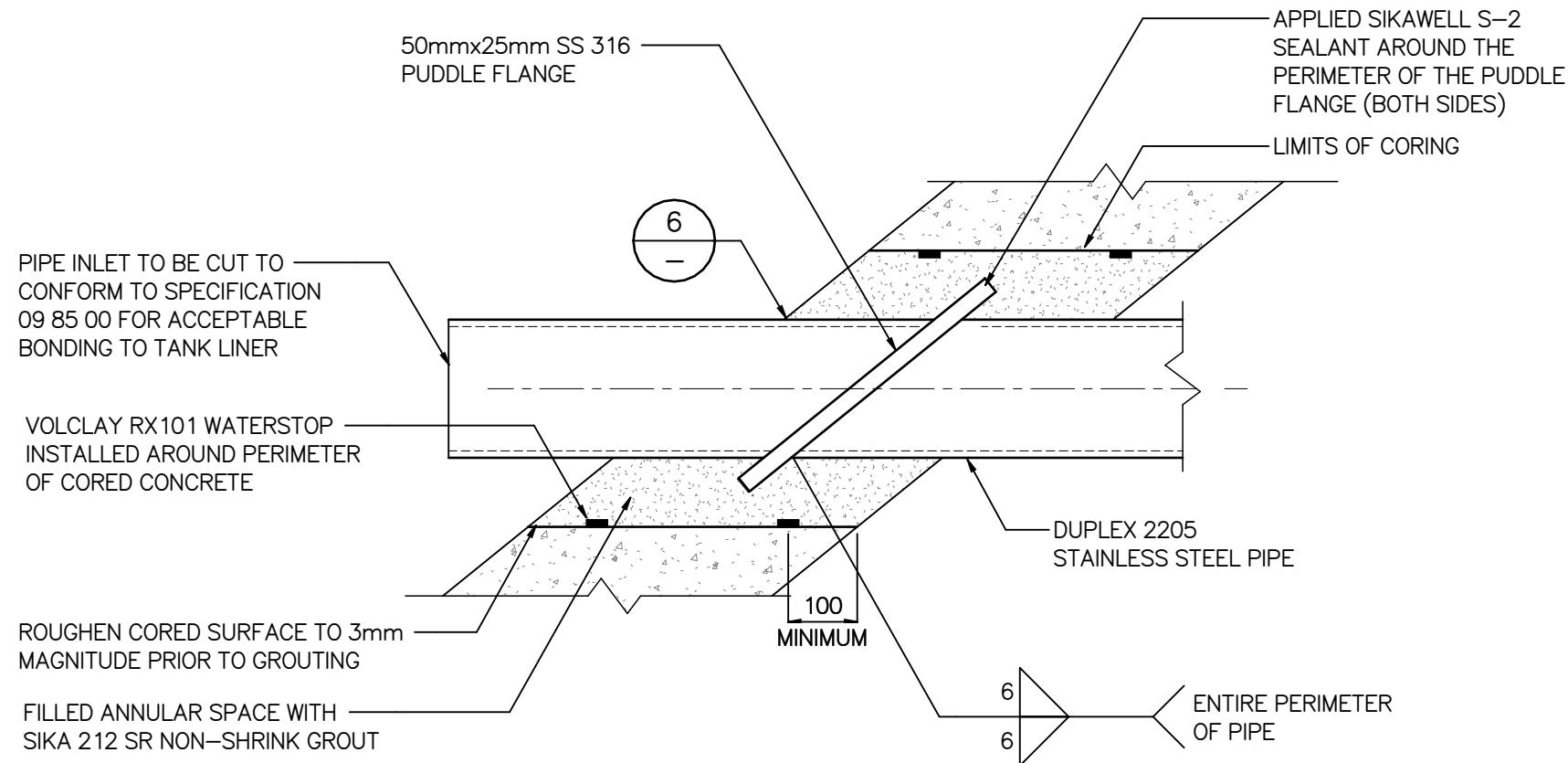
1 INSTRUMENTS FOR SALVAGE
SCALE: NOT TO SCALE



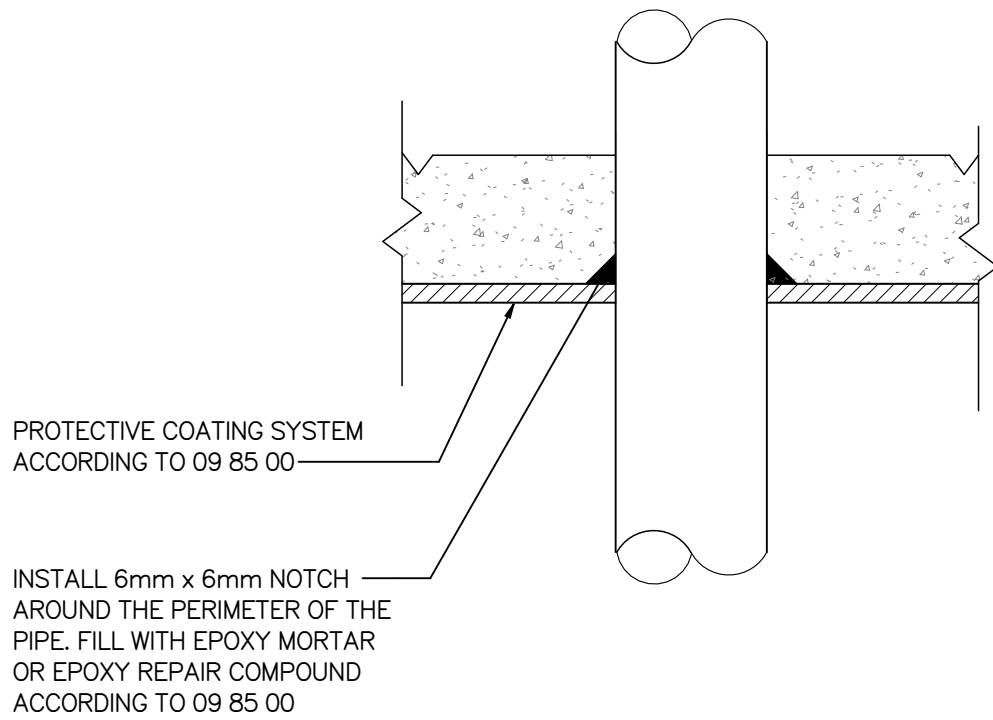
3 TYPICAL FLANGED BALL VALVE
SCALE: NOT TO SCALE



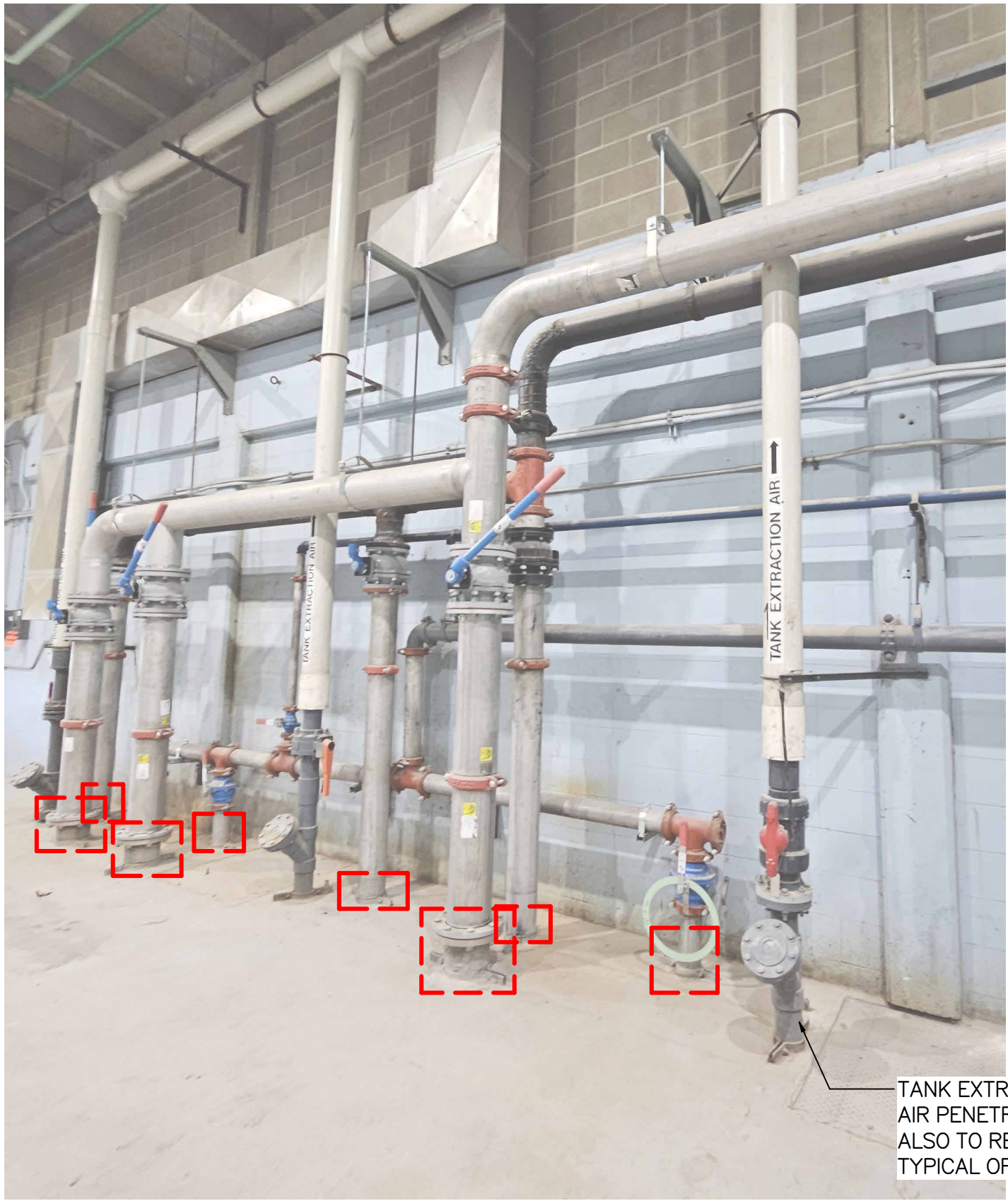
4 100mm SLUDGE PIPE
SCALE: NOT TO SCALE



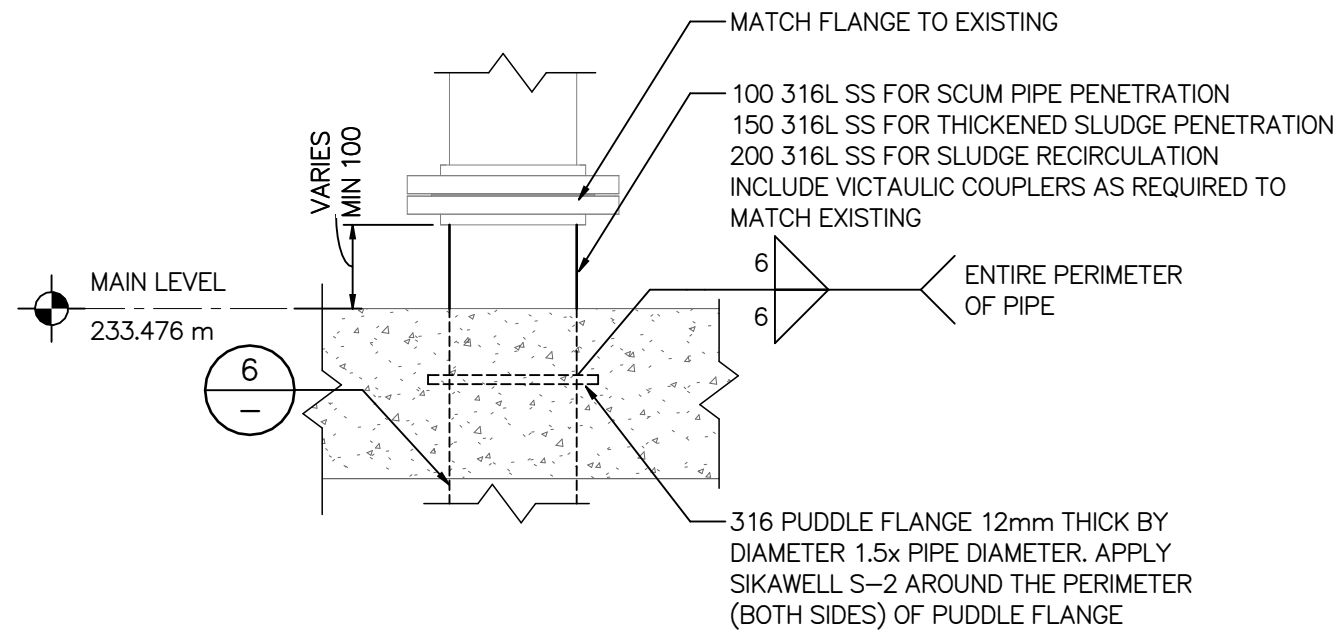
5 SUCTION PIPING PENETRATION DETAIL
SCALE: NOT TO SCALE



6 TYPICAL PROTECTIVE COATING SYSTEM
TERMINATION AT PIPE PENETRATION
SCALE: NOT TO SCALE



2 SLUDGE AND SCUM PIPING
SCALE: NOT TO SCALE



7 PIPE PENETRATION
SCALE: NOT TO SCALE

NOTES:

1. ALL PIPE PENETRATIONS THROUGH NEW OR EXISTING CONCRETE TO BE PREPARED AND BONDED TO THE TANK LINER ACCORDING TO DETAIL 6 AND ACCORDING TO SPECIFICATION 09 85 00.

9		
8		
7		
6		
5		
4		
3	1-0102-PGAD-D015	PROCESS - NEW WORK - PLAN, SECTION AND DETAIL
2	1-0102-PGAD-D052	PROCESS - DEMOLITION - PLAN AND SECTIONS
1	1-0102-MGAD-D605	MECHANICAL - NEW WORK - VENTILATION - PLAN AND SECTIONS
NO.	DRAWING NUMBER	REFERENCE DRAWINGS TITLE



00	ISSUED FOR CONSTRUCTION, TENDER NUMBER: 367-2025	2025-06-04	BRB	BRB
NO.	REVISIONS	DATE	DESIGN	CHECK

MPE a division of Englobe	
DESIGNED BY: B. BAKER	CHECKED BY: B. BAKER
DRAWN BY: J. BALVERDE	APPROVED BY: B. BAKER
SCALE: NOT TO SCALE	RELEASED FOR CONSTRUCTION BY: DATE: 2025-06-04
CONSULTANT NO.: 8400-010-00	



THE CITY OF WINNIPEG WATER AND WASTE DEPARTMENT		
SOUTH END SEWAGE TREATMENT PLANT (SEWPCC) SEWPCC SLUDGE HOLDING TANKS REFURBISHMENT AREA D - FERMENTERS/SLUDGE THICKENERS PROCESS DETAILS		
CITY DRAWING NUMBER 1-0102-PDTL-D001	SHEET 00	REV. SIZE A1