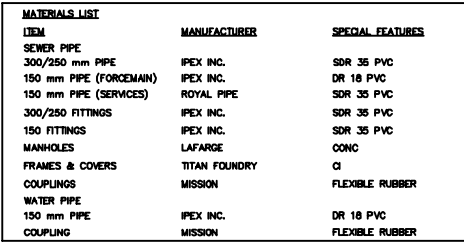



PUBLIC LANE
(N OF PORTAGE AVE)

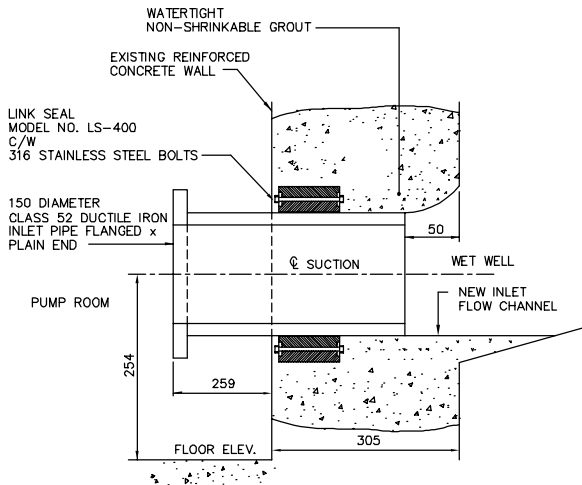
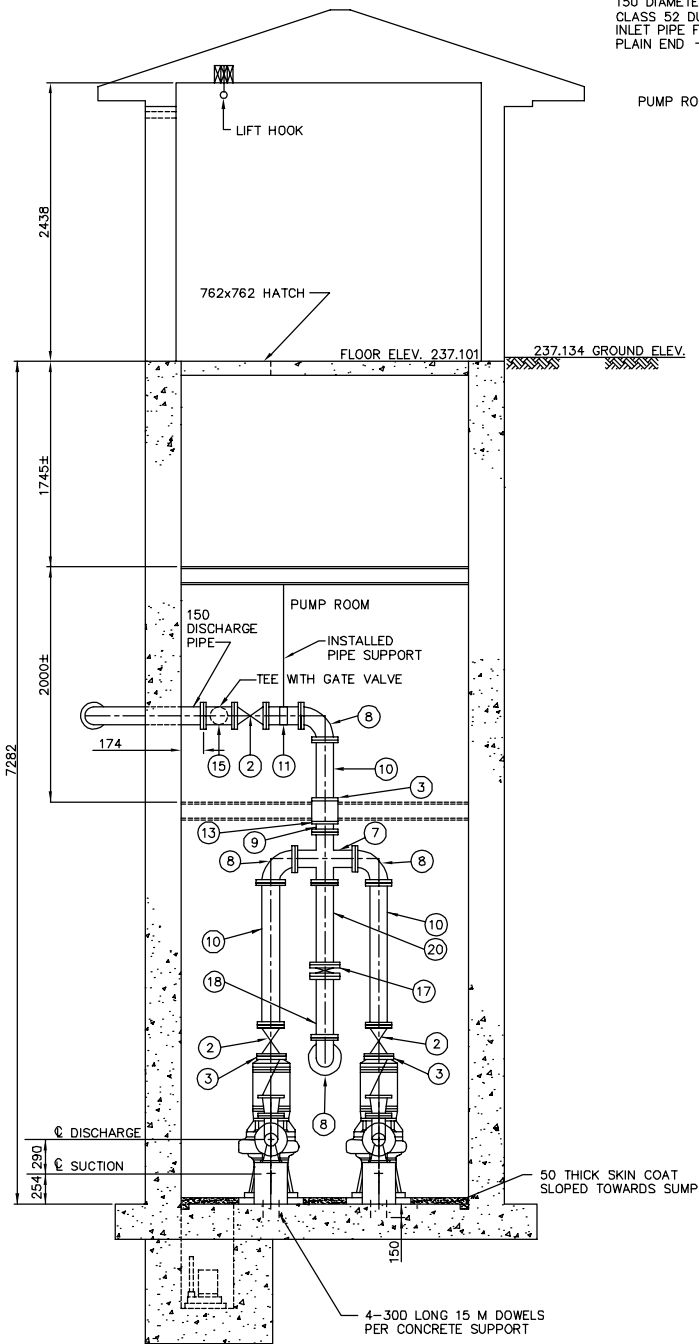
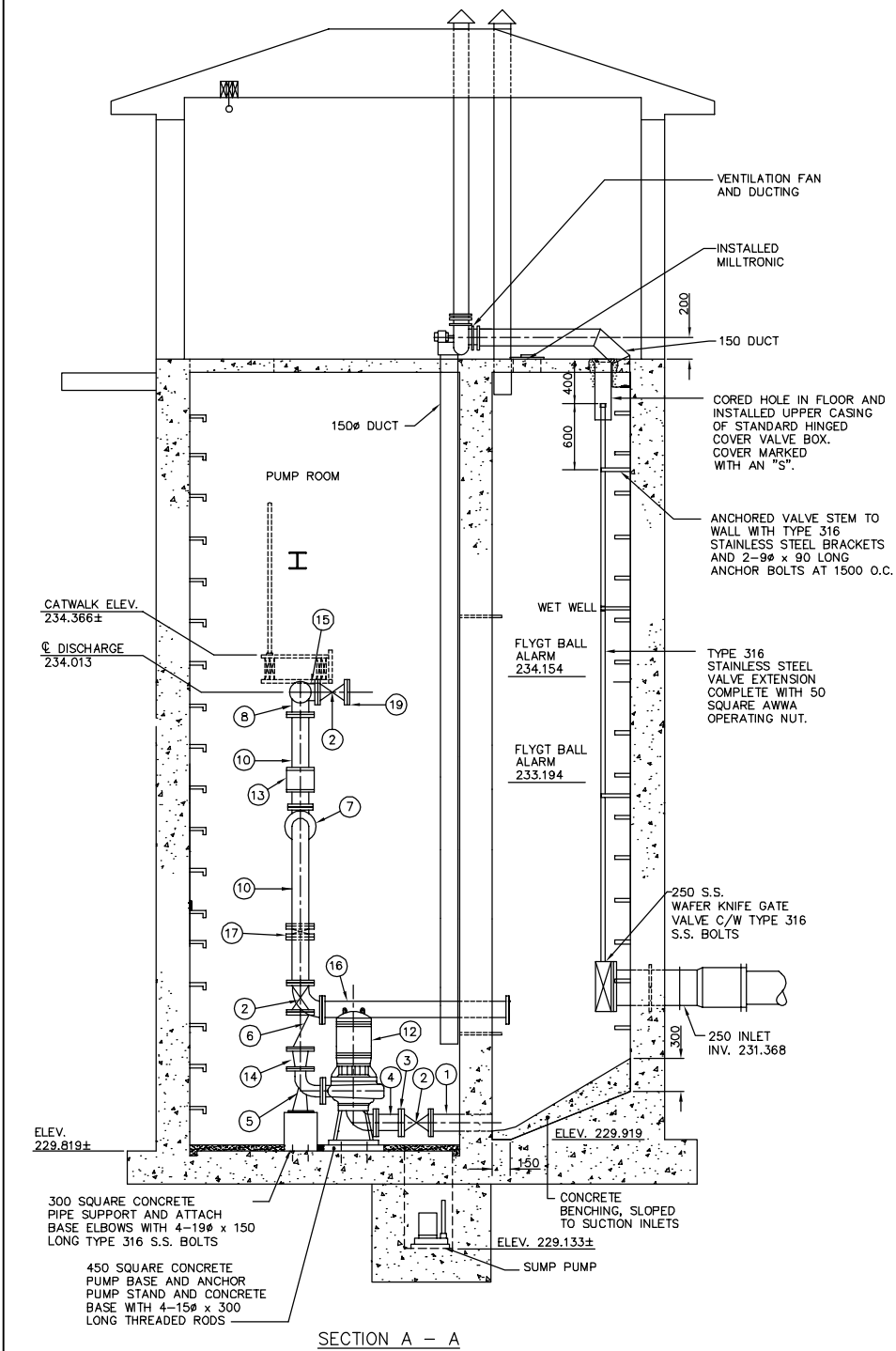


200 WM	WATERMAIN	200 WM	-----	SL , HYDRO	-----	150 WM	WATERMAIN	150 WM	LOCATION APPROVED UNDERGROUND STRUCTURES	B.M. REVIEW	FIELD BOOK #	CITY OF WINNIPEG WATER AND WASTE ENGINEERING DIVISION	ENGINEER'S SEAL ORIGINAL MYLAR SIGNED BY K.R. ZUREK 09/01/27	 THE CITY OF WINNIPEG WATER AND WASTE DEPARTMENT	2007 SEWER RENEWALS CONTRACT 34	SHEET 2 of 10 CITY DRAWING NUMBER							
+	HYDRANT	+	=====	MTS	=====	+	HYDRANT	+		SUPV. U/G STRUCTURES COMMITTEE	DATE						DESIGNED BY NC	CHECKED BY TW					
o	VALVE	o	=====	TRAFFIC SIGNALS	=====	o	VALVE	o											DRAWN BY CJH	APPROVED BY KZ			
525 LDS	LAND DRAINAGE SEWER	525 LDS	50 GAS	GAS	50 GAS	300 LDS	LAND DRAINAGE SEWER	300 LDS		NOTE: LOCATION OF UNDERGROUND STRUCTURES AS SHOWN ARE BASED ON THE BEST INFORMATION AVAILABLE BUT NO GUARANTEE IS GIVEN THAT ALL EXISTING UTILITIES ARE SHOWN OR THAT THE GIVEN LOCATIONS ARE EXACT. CONFIRMATION OF EXISTENCE, AND EXACT LOCATION OF ALL SERVICES MUST BE OBTAINED FROM THE INDIVIDUAL UTILITIES BEFORE PROCEEDING WITH CONSTRUCTION.	HOR. SCALE 1:250						RELEASED FOR CONSTRUCTION						
375 WWS	WASTEWATER SEWER	375 WWS	#	SURVEY BAR	=====	250 WWS	WASTEWATER SEWER	250 WWS										VERTICAL 1:50	DATE 2007 10 19	DATE			
o	MANHOLE	●	* * *	FENCE	=====	x	€ PROFILE	=====		1 REVISED TO RECORD DRAWING 09/01/26 CJH	NO. REVISIONS						DATE				BY	DATE	
□	CATCH BASIN	■	* H * T	POLE -- HYDRO, MTS	=====	=====	GROUND ABOVE PIPE	=====										EXISTING	LEGEND--PLAN	PROPOSED			EXISTING
▽	CURB INLET	▽	♂	CURB STOP	=====	♂		=====		EXISTING	LEGEND--PLAN						PROPOSED				EXISTING	LEGEND--PLAN	
JUNCTIONS		JUNCTIONS	←	GUY ANCHOR	=====			=====										EXISTING	LEGEND--PLAN	PROPOSED			EXISTING
CULVERT		CULVERT	→	LIGHT STANDARD	=====			=====		EXISTING	LEGEND--PLAN						PROPOSED				EXISTING	LEGEND--PLAN	
ANODE		ANODE	⊗	TREE	=====			=====	EXISTING			LEGEND--PLAN	PROPOSED	EXISTING	LEGEND--PLAN	PROPOSED		EXISTING	LEGEND--PROFILE	PROPOSED			
EXISTING	LEGEND--PLAN	PROPOSED	EXISTING	LEGEND--PLAN	PROPOSED	EXISTING	LEGEND--PROFILE	PROPOSED		EXISTING	LEGEND--PLAN						PROPOSED				EXISTING	LEGEND--PLAN	PROPOSED

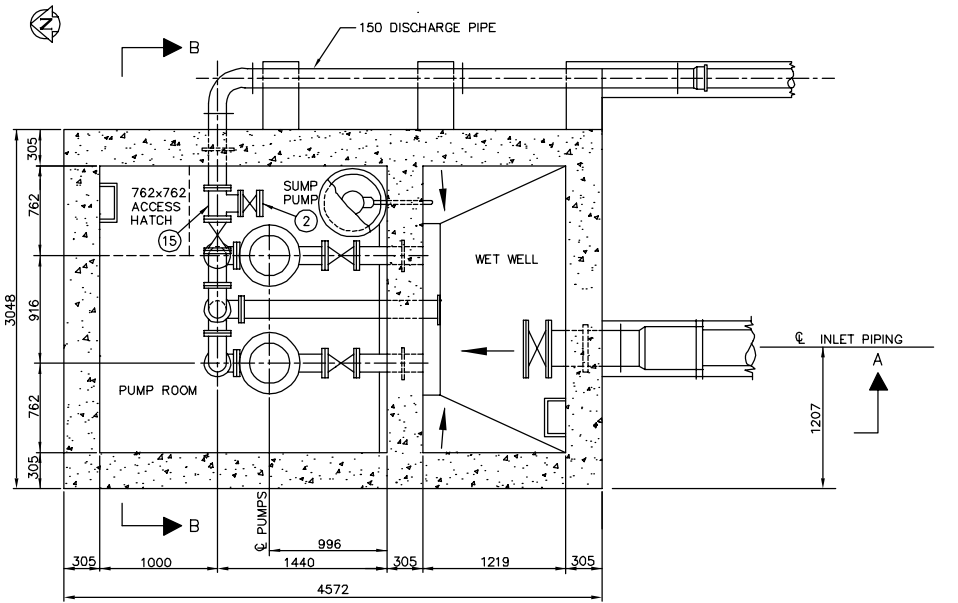
BID OPPORTUNITY: 767-2007	
FILENAME : 06449.dwg	
PLOT DATE: 2007 10 19	

PUBLIC LANE (N OF PORTAGE AVE)	
MH AT ST CHARLES STREET TO	
MH AT ISBISTER STREET	

06449	
--------------	--



DETAIL 'A'
SUCTION INLET DETAIL
NOT TO SCALE



PLAN VIEW

NOTES

1. LENGTHS SHOWN FOR PIPING ARE FACE TO FACE AND DO NOT INCLUDE GASKET THICKNESS.
2. GASKETS ARE 3 mm THICK, FULL FACED, CLOTH INSERTED RUBBER.
3. ALL FASTNERS ARE TYPE 316 STAINLESS STEEL.
4. ALL PIPES ARE CLASS 52 DUCTILE IRON OR SCHEDULE 40 STEEL.
5. ALL FLANGED FITTINGS CONFORM TO AWWA C110
6. ALL FLANGES ARE WELDED INSIDE AND OUT IN ACCORDANCE WITH AWWA C-207 CLASS D.
7. ALL BOLTS ARE KWK BOLT STUD ANCHOR
8. BONDING AGENT IS ACRYL-STIX

AS-CONSTRUCTED

CONTRACT ADMINISTRATION DRAFTING & GRAPHIC SERVICES DATE
WATER AND WASTE DEPARTMENT

LIST OF MATERIALS				LIST OF MATERIALS			
ITEM	ENDS	LENGTH	QUANTITY	ITEM	ENDS	LENGTH	QUANTITY
1. 150 INLET PIPE, PLAIN ENDS		461	2	11. 150 FILLER PIPE	FLANGED	280	1
2. 150 GATE VALVE	FLANGED	267	6	12. AURORA 664A - 4 X 4 X 9 VERTICAL NON-CLOG			2
3. 150 SERIES 400 UNI-FLANGE			6				
4. 150 FILLER PIPE FLANGE TO PLAIN END		267	2	13. FLOW METER	FLANGED		1
5. 100 BASE ELBOW	FLANGED		2	14. 150 - 100 REDUCER SUPPLIED BY OWNER	FLANGED	230	2
6. 150 BALL CHECK VALVE	FLANGED	352	2	15. 150 x 150 x 150 x CAST IRON TEE	FLANGED		1
7. 150 x 150 x 150 x 150 CAST IRON CROSS	FLANGED	412V x 408H	1	16. 150 FILLER PIPE	FLANGED	1715	1
8. 150 STANDARD 90° ELBOW	FLANGED		4	17. 150 WAFER KNIFE GATE VALVE	FLANGED		1
9. 150 FILLER PIPE	FLANGED	300	1	18. 150 FILLER PIPE	FLANGED	±300	1
10. 150 FILLER PIPE	FLANGED	430	1	19. 150 FILLER PIPE FLANGED 12Y PLAIN END	#7 890	±965	2
				#2 910			
				20. 150 FILLER PIPE	FLANGED	650	1

WHOLE NUMBERS INDICATE MILLIMETRES
DECIMALIZED NUMBERS INDICATE METRES

METRIC

CITY OF WINNIPEG
WATER AND WASTE
ENGINEERING DIVISION

DESIGNED BY DS	CHECKED BY JE
DRAWN BY TM	APPROVED BY
HOR. SCALE 1 : 30 OR AS SHOWN	RELEASED FOR CONSTRUCTION
VERTICAL	DATE
DATE	DATE

ENGINEER'S SEAL
PD94-150
AUTOCAD 13
FILENAME: 1419.DWG
PLOT DATE: 1998.09.04

THE CITY OF WINNIPEG
WORKS AND OPERATIONS DIVISION
WATERWORKS WASTE AND DISPOSAL DEPARTMENT

ST. CHARLES WASTEWATER
PUMPING STATION UPGRADING

PLAN AND SECTIONS

SHEET 1 OF 1

CITY DRAWING NUMBER

1419