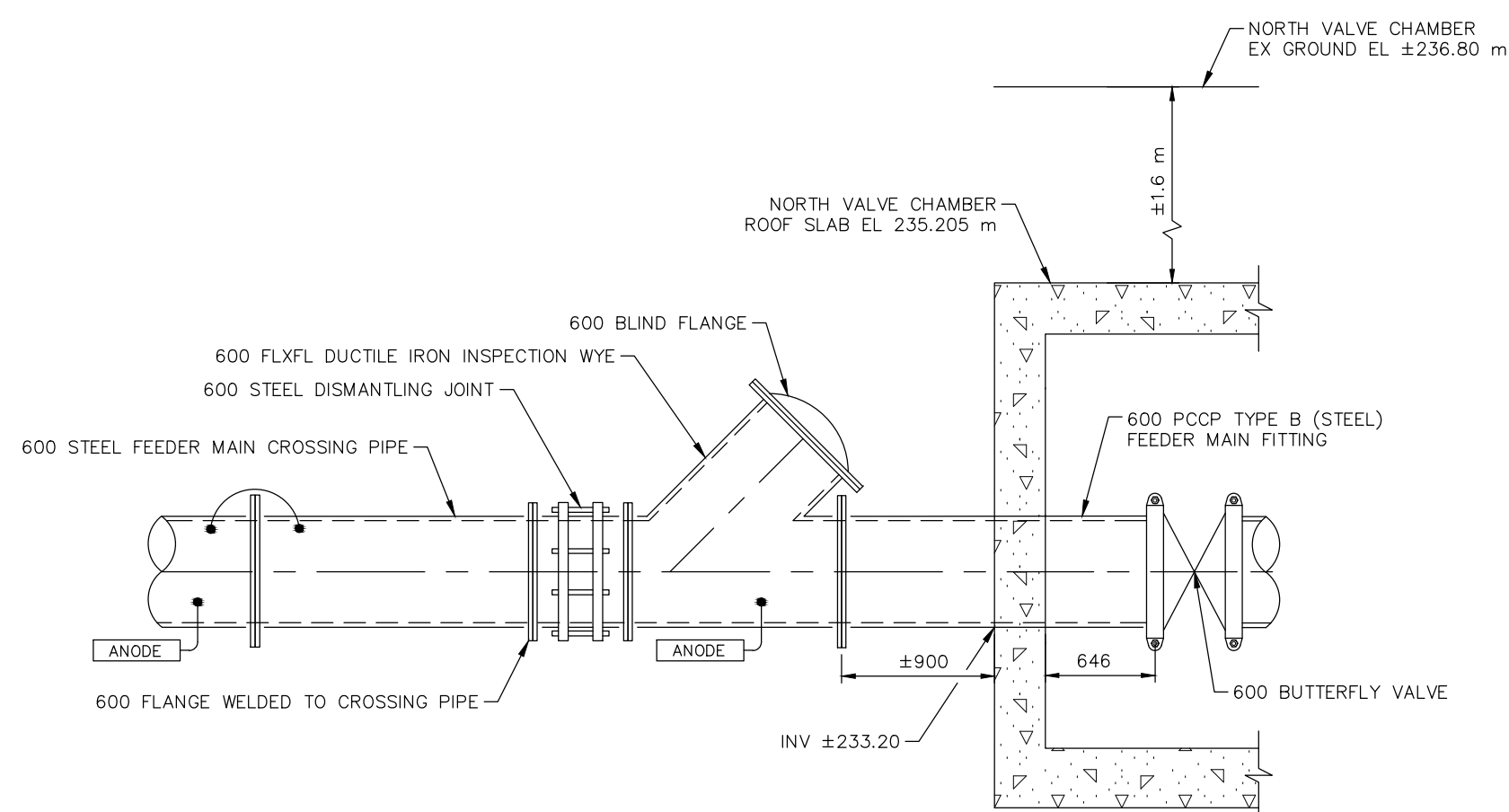
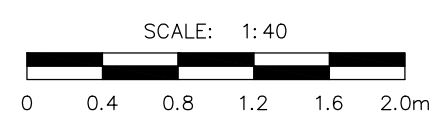
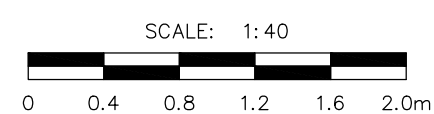


DETAIL 1 - SOUTH EXCAVATION - EXISTING CONDITIONS

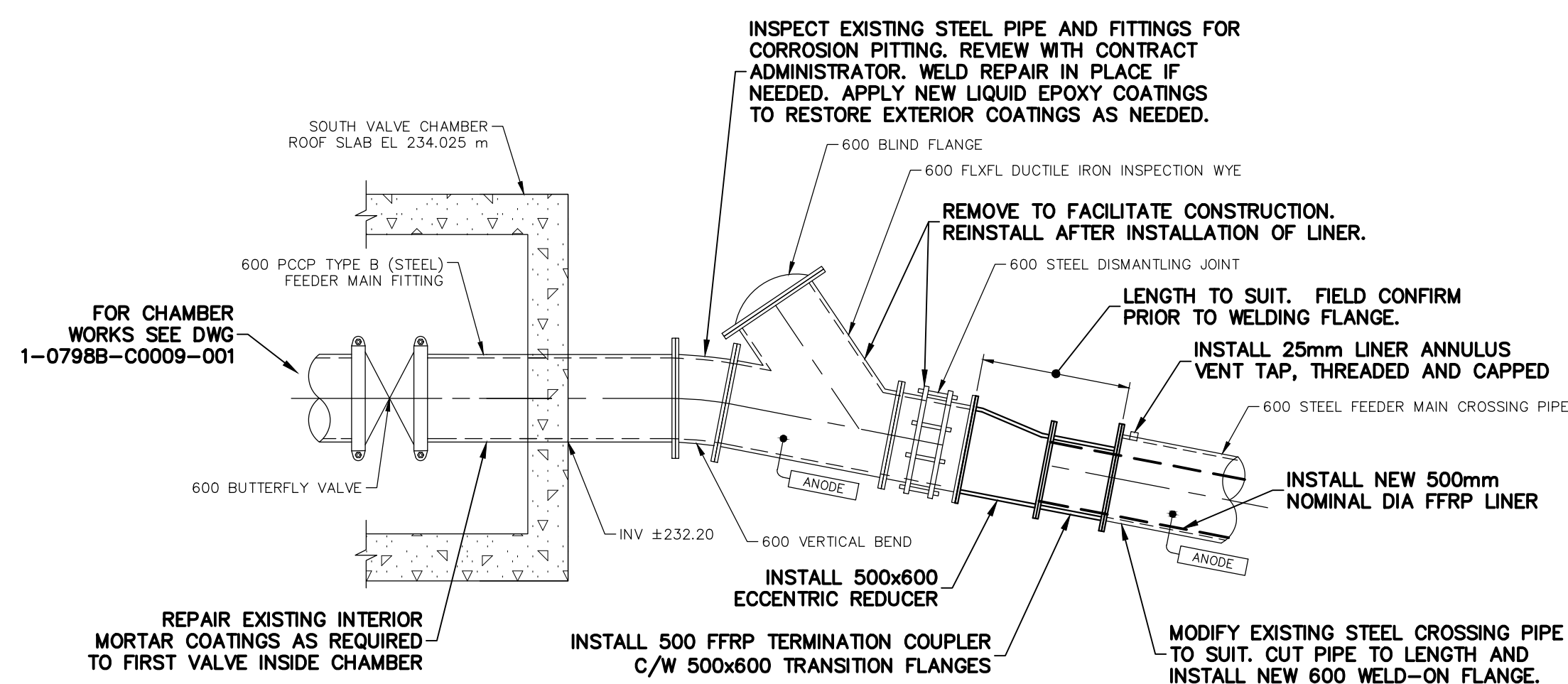


DETAIL 2 - NORTH EXCAVATION - EXISTING CONDITIONS

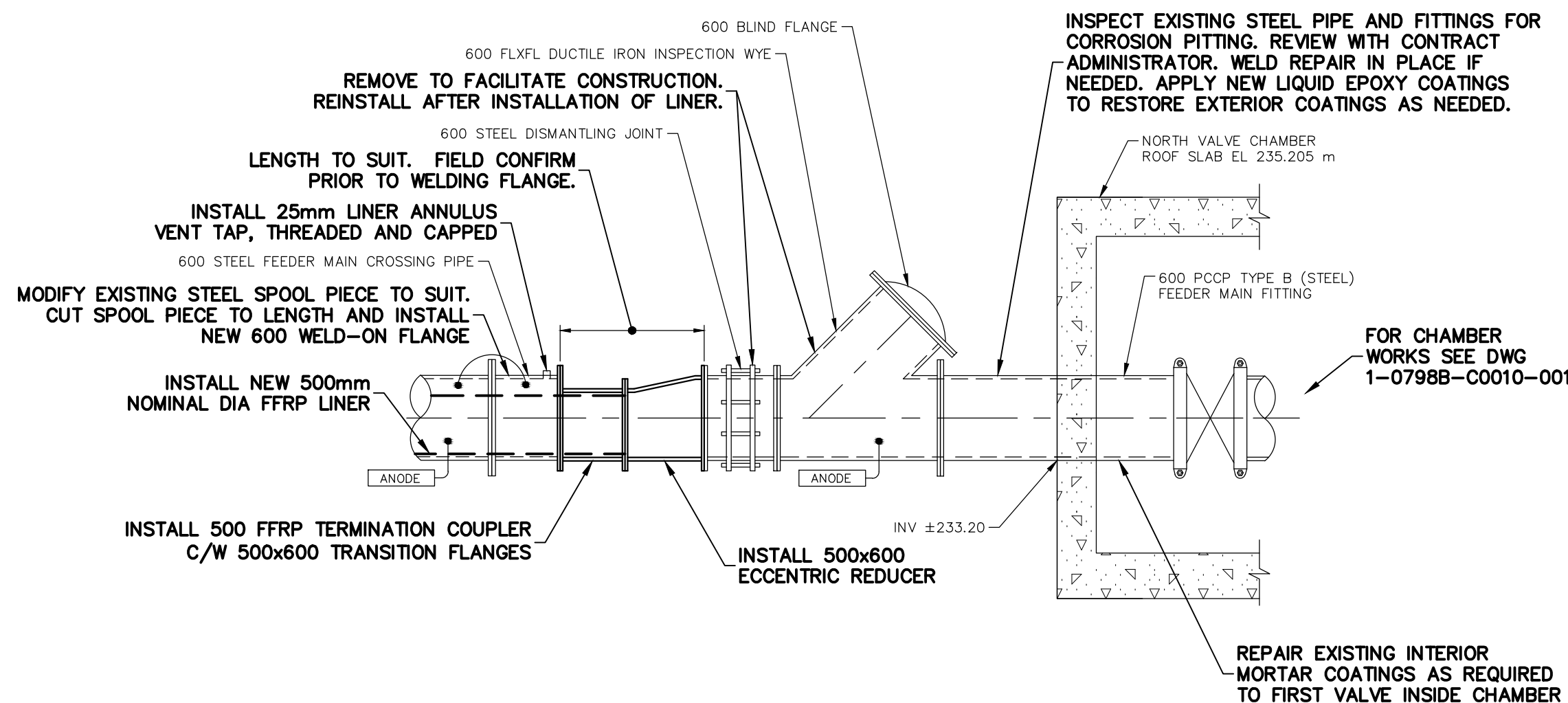
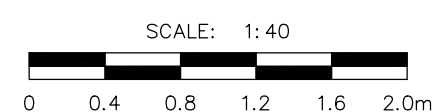


### CONSTRUCTION NOTES

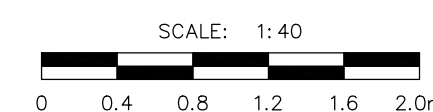
1. INSPECT EXPOSED STEEL PIPING COMPONENTS BETWEEN LAUNCH WYES AND EXISTING CHAMBER FOR CORROSION PITTING AND WELD REPAIR IN PLACE. COMPLETE ANY WELD REPAIRS PRIOR TO EXTERIOR AND INTERIOR COATING REPAIRS.
2. RESTORE EXTERIOR COATINGS WITH NEW LIQUID EPOXY AS REQUIRED. PREP SURFACE FOR RECOATING IN ACCORDANCE WITH COATING MANUFACTURER'S RECOMMENDATIONS.
3. RESTORE INTERIOR CEMENT MORTAR LININGS TO FIRST VALVE INSIDE EACH CHAMBER. REMOVE DAMAGED MORTAR LINING AND REPAIR WITH ACCEPTED CEMENT MORTAR COMPOUND.
4. COMPLETE LINER ACCEPTANCE TESTING PRIOR TO REASSEMBLY OF FEEDER MAIN PIPING.
5. REINSTALL EXISTING WYE ASSEMBLIES AND DISMANTLING JOINTS. USE NEW GASKETS AND HARDWARE FOR REASSEMBLY.
6. BACKFILL TO SPRINGLINE OF FEEDER MAIN (MIN) PRIOR TO CHARGING THE FEEDER MAIN AND FLUSHING OPERATIONS.
7. TEMPORARY BLIND FLANGES WITH LARGER PORTS SHALL BE USED FOR FEEDER MAIN FLUSHING OPERATIONS SUFFICIENT TO ACHIEVE FLUSHING VELOCITIES.
8. REINSTALL OR REPLACE ALL EXISTING CORROSION PROTECTION MEASURES AFTER REASSEMBLY OF PIPING AND PRIOR TO BACKFILL.
9. WRAP ALL JOINTS WITH PETROLATUM CORROSION PROTECTION SYSTEM AFTER REASSEMBLY.
10. BACKFILL EXCAVATIONS IN ACCORDANCE WITH CW 2030.



DETAIL 3 - SOUTH EXCAVATION - PROPOSED



DETAIL 4 - NORTH EXCAVATION - PROPOSED



FOR INDEX SEE DWG  
1-0798E-D0006-001

LOCATION APPROVED UNDERGROUND STRUCTURES	
SUPV. U/G STRUCTURES COMMITTEE	DATE
NOTE: LOCATION OF UNDERGROUND STRUCTURES AS SHOWN ARE BASED ON THE BEST INFORMATION AVAILABLE BUT NO GUARANTEE IS GIVEN THAT ALL EXISTING UTILITIES ARE SHOWN OR THAT THE GIVEN LOCATIONS ARE EXACT. CONFIRMATION OF EXISTENCE AND EXACT LOCATION OF ALL SERVICES MUST BE OBTAINED FROM THE INDIVIDUAL UTILITIES BEFORE PROCEEDING WITH CONSTRUCTION.	

VERTICAL DATUM: CGVD28 (HT2.0 Geoid)  
HORIZONTAL DATUM: NAD83 (June 1990), Zone 14

NO.	ISSUED FOR CONSTRUCTION	DATE	BY
0	ISSUED FOR CONSTRUCTION	2025/04/07	NJK
NO.	REVISIONS	DATE	BY
		YYYY/MM/DD	

<b>Stantec</b> 500 - 311 Portage Avenue, Winnipeg M8 Canada R3B 2B9 Tel. 204.489.5900 Fax. 204.453.9012 www.stantec.com	
DESIGNED BY NJK	CHECKED BY ADB
DRAWN BY DML	APPROVED BY ADB
SCALE: HORIZONTAL VERTICAL	RELEASED FOR CONSTRUCTION STACY COURNOYER, P. Eng.
DATE APRIL 7, 2025	DATE APRIL 4, 2025

ENGINEER'S SEAL 	CONSULTANT DRAWING NUMBER
---------------------	---------------------------

<b>THE CITY OF WINNIPEG</b> WATER AND WASTE DEPARTMENT ENGINEERING SERVICES DIVISION CHARLESWOOD-ASSINIBOIA FEEDER MAIN RIVER CROSSING REHABILITATION	
RIVER CROSSING DETAILS	
SHEET 4 OF 7 CITY DRAWING NUMBER 1-0798E-C0011-001	