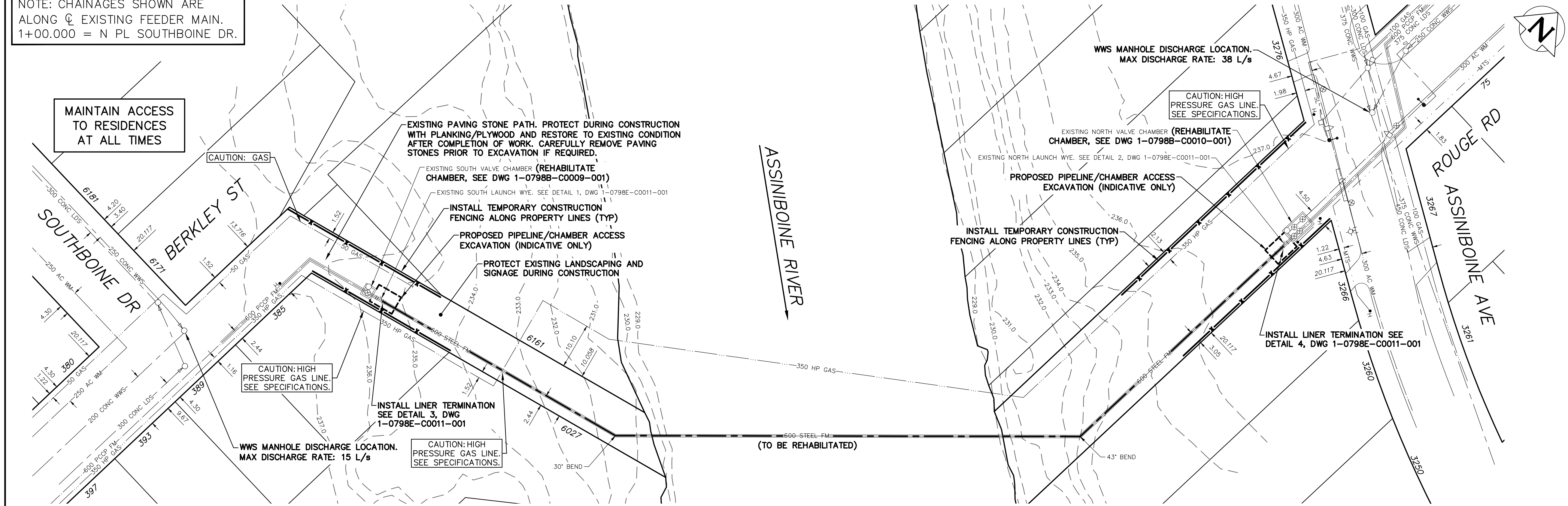


CONSTRUCTION NOTES

1. OPERATION OF EXISTING VALVES BY CITY STAFF ONLY.
2. CITY TO ISOLATE FEEDER MAIN ONE VALVE BACK FROM CROSSING TO REDUCE THRUST FORCES ON CHAMBER AND FACILITATE VALVE REPLACEMENT WORK. CONFIRM ISOLATION PRIOR TO EXCAVATION AND THROUGHOUT WORK.
3. CONTRACTOR IS RESPONSIBLE FOR PUMPING WATER DRAINED FROM SYSTEM AS REQUIRED.
4. FLUSHING AND OTHER WATER COLLECTED DURING THE COURSE OF THE WORK MAY BE DISCHARGED INTO THE MANHOLES SHOWN ON THE DRAWINGS AT THE MAXIMUM FLOW RATED IDENTIFIED, TO AN LDS SEWER (WITH DECHLORINATION), OR TO THE RIVER (WITH DECHLORINATION AND ASSOCIATED PROVISIONS) IN ACCORDANCE WITH THE SPECIFICATIONS.
5. THE FEEDER MAIN MAY BE DEWATERED TO FACILITATE CONSTRUCTION.
6. CONTRACTOR SHALL ADDRESS ASSESS ACTIVE INFILTRATION INTO THE EXISTING FEEDER MAIN AND BE PREPARED TO PUMP INFILTRATION. SEE SPECIFICATIONS.
7. INSTALL 500mm NOMINAL DIA NSF 61 FFRP LINER C/W TRANSITION COUPLINGS TO RIVER-SIDE OF EXISTING LAUNCH WYE ASSEMBLIES ON BOTH SIDES OF THE RIVER. MODIFY EXISTING FEEDER MAIN PIPING AS INDICATED ON THE DRAWINGS AND AS REQUIRED TO SUIT FFRP INSTALLATION.
8. CLEAN AND PREP PIPELINE IN ACCORDANCE WITH THE SPECIFICATIONS AND LINER SUPPLIER PRIOR TO LINER INSTALLATION.
9. COMPLETE CCTV INSPECTION OF CROSSING PRIOR TO LINER INSTALLATION.
10. THE CONTRACTOR SHALL COMPLETE THE FOLLOWING POST LINER INSTALLATION:
 - a. HYDROSTATIC LEAKAGE TEST.
 - b. REINSTALL LAUNCH WYES AND COMPLETE VALVE CHAMBER WORK.
 - c. FLUSH FEEDER MAIN CROSSING. EXISTING FEEDER MAIN SYSTEM MAY BE USED FOR FLUSHING OPERATIONS.
 - d. DISINFECTION AND HEALTH TESTING.
11. RESTORE SITE UPON COMPLETION OF WORK:
 - a. REPAIR THE EXISTING PAVING STONE SIDEWALK IN ACCORDANCE WITH SD-228A.
 - b. PLACE SOD ON ALL DISTURBED GRASSED AREAS ABOVE NORMAL SUMMER WATER LEVEL ON BOTH SIDES OF THE RIVER.
 - c. RESTORE AND RESURFACE GRAVEL PORTION OF BERKLEY ST TO CW3150.

NOTE: CHAINAGES SHOWN ARE ALONG \varnothing EXISTING FEEDER MAIN. 1+00.000 = N PL SOUTHBOINE DR.



FOR INDEX SEE DWG 1-0798E-D0006-001



**ENGINEERS
GEOSCIENTISTS
MANITOBA**
Certificate of Authorization
Stantec Consulting Ltd.
No. 1301

METRIC
WHOLE NUMBERS INDICATE MILLIMETRES
DECIMALIZED NUMBERS INDICATE METRES
UNLESS OTHERWISE NOTED

WARNING

IF POWER EQUIPMENT OR EXPLOSIVES ARE TO BE USED FOR EXCAVATION ON THIS PROJECT THE CONTRACTOR MUST:

- 1) NOTIFY THE GAS COMPANY OF THE PROPOSED LOCATION OF EXCAVATION.
- 2) TAKE PRECAUTION TO AVOID DAMAGE TO GAS COMPANY INSTALLATIONS.

SEE PROVINCIAL REGULATION 210/72 FOR DETAILS

LOCATION APPROVED
UNDERGROUND STRUCTURES

SUPV. U/G STRUCTURES COMMITTEE DATE

NOTE:

LOCATION OF UNDERGROUND STRUCTURES AS SHOWN ARE BASED ON THE BEST INFORMATION AVAILABLE BUT NO GUARANTEE IS GIVEN THAT ALL EXISTING UTILITIES ARE SHOWN OR THAT THE GIVEN LOCATIONS ARE EXACT. CONFIRMATION OF EXISTENCE AND EXACT LOCATION OF ALL SERVICES MUST BE OBTAINED FROM THE INDIVIDUAL UTILITIES BEFORE PROCEEDING WITH CONSTRUCTION.

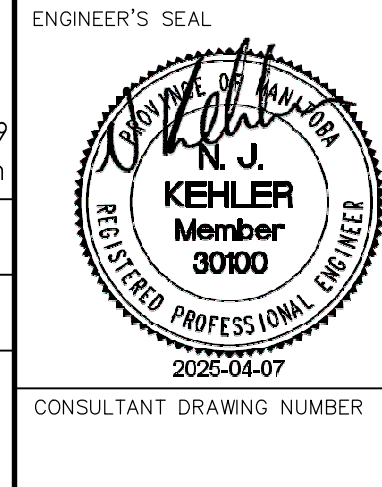
VERTICAL DATUM: CGVD28 (HT2.0 Geoid)
HORIZONTAL DATUM: NAD83 (June 1990), Zone 14

NO.	ISSUED FOR CONSTRUCTION	DATE	BY
0	ISSUED FOR CONSTRUCTION	2025/04/07	NJK
NO.	REVISIONS	DATE	BY

Stantec
500 - 311 Portage Avenue, Winnipeg M8 Canada R3B 2B9
Tel. 204.489.5900 Fax. 204.453.9012 www.stantec.com

DESIGNED BY	NJK	CHECKED BY	ADB
DRAWN BY	DML	APPROVED BY	ADB
SCALE:		RELEASED FOR CONSTRUCTION	
HORIZONTAL	1:500	STACY COURNOYER, P. Eng.	
VERTICAL	1:50		
DATE	APRIL 7, 2025	DATE	APRIL 4, 2025

PLOT DATE: 2025 04 07



TENDER NUMBER: 310-2025
CONTRACT NUMBER: N/A



THE CITY OF WINNIPEG
WATER AND WASTE DEPARTMENT
ENGINEERING SERVICES DIVISION

CHARLESWOOD-ASSINIBOIA FEEDER MAIN
RIVER CROSSING REHABILITATION

RIVER CROSSING
PLAN & PROFILE

SHEET 3 OF 7

CITY DRAWING NUMBER

1-0798E-C0010-001

FILE PATH: U:\133600057\09_CAD\07 Sheets\
FILE NAME: 03 PLAN PROFILE.dwg