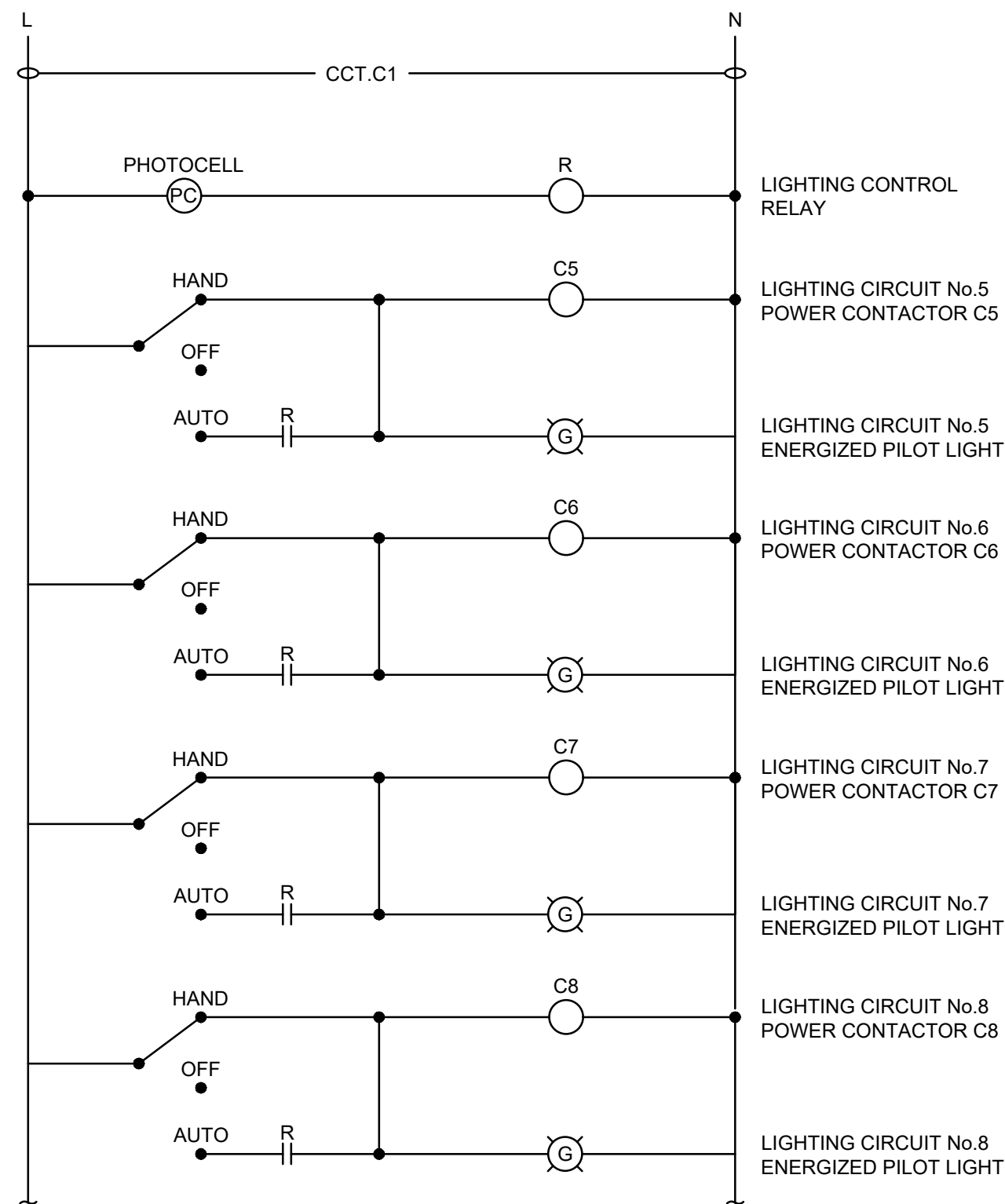
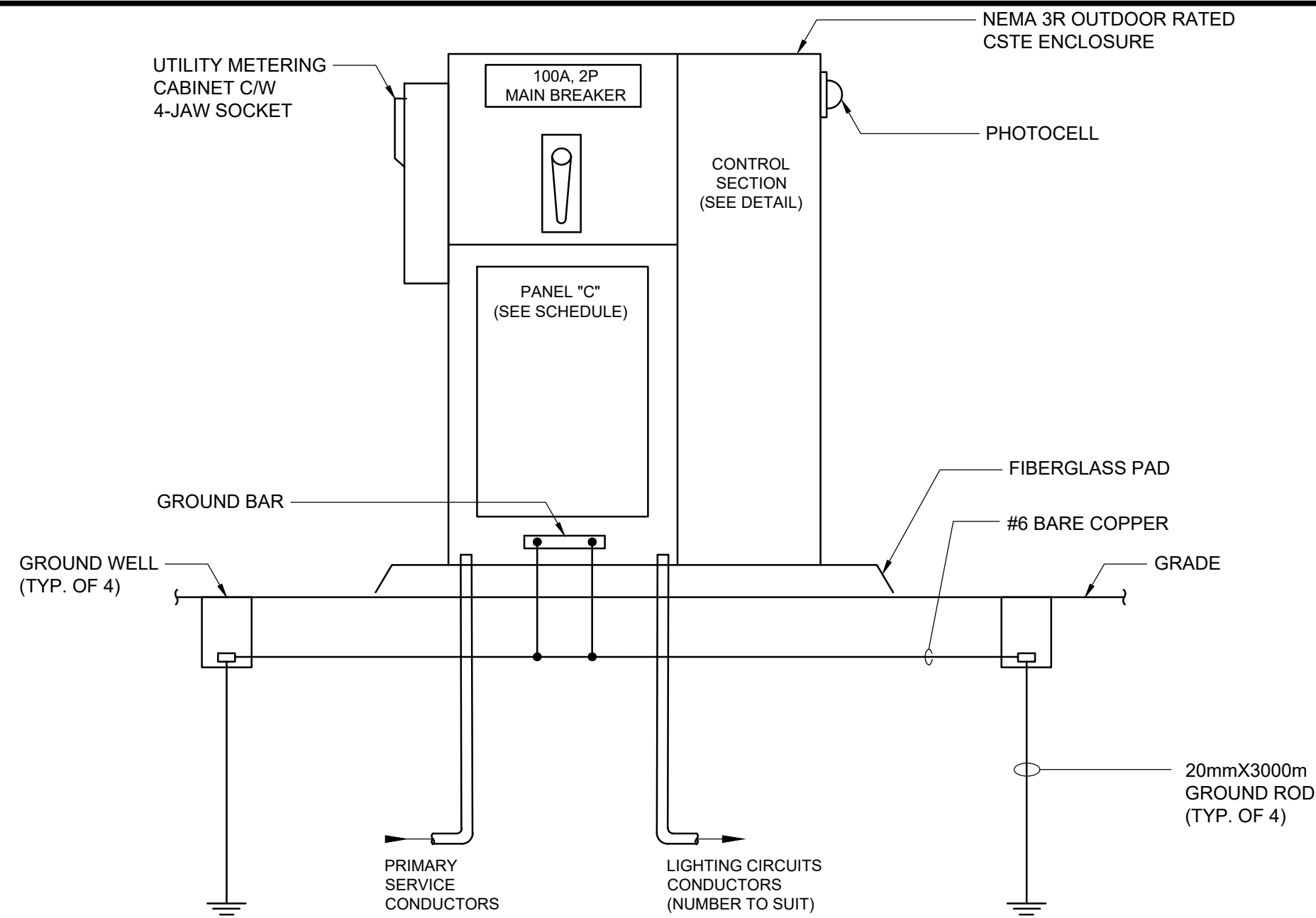


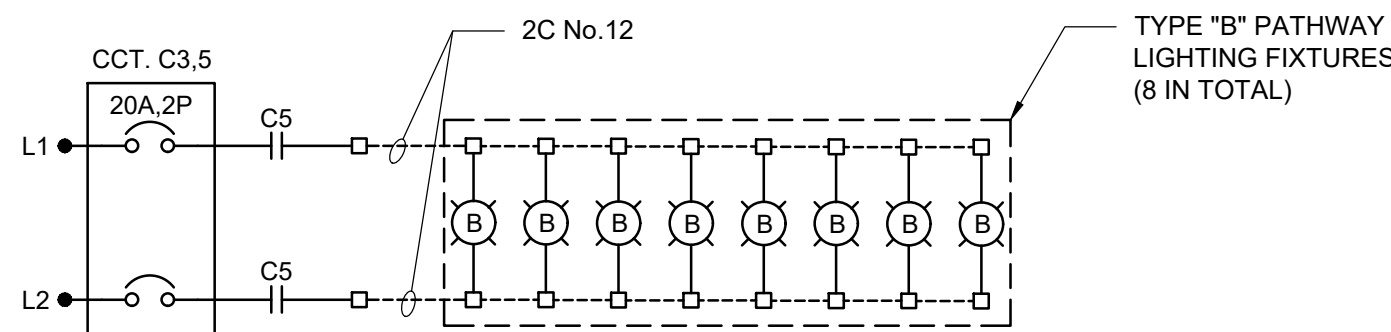
1 SINGLE LINE DIAGRAM
N.T.S.



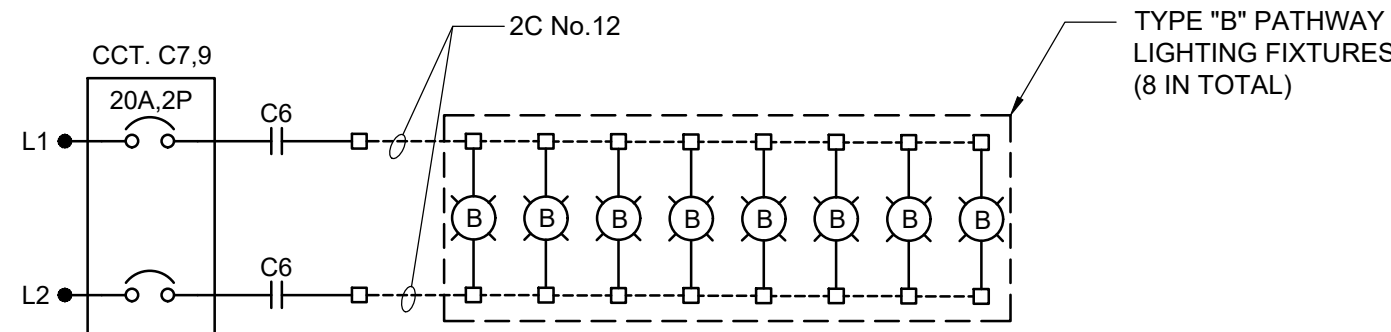
5 LIGHTING CONTROL CIRCUIT WIRING DIAGRAM
N.T.S.



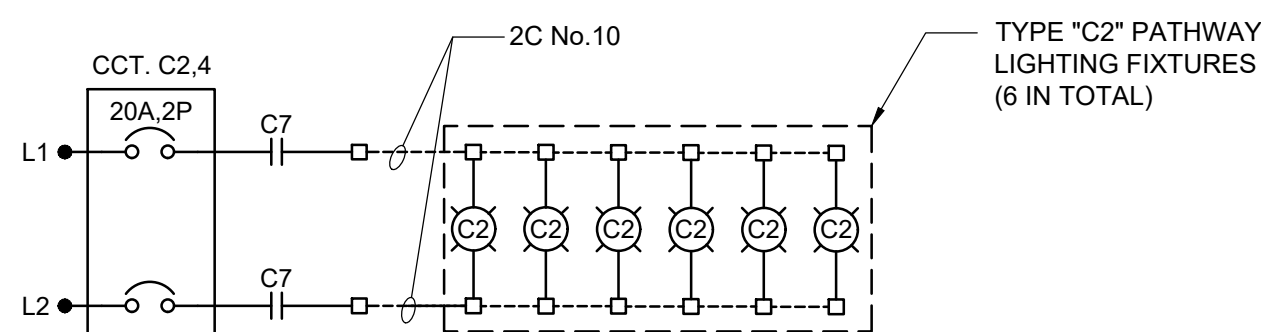
2 CSTE "C" PROPOSED LAYOUT (FRONT DOOR REMOVED)
N.T.S.



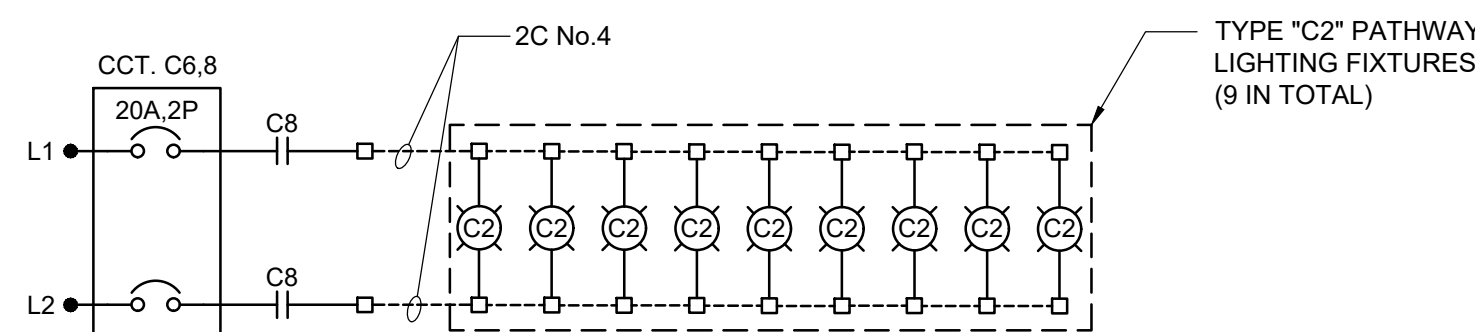
6 LIGHTING CIRCUIT No.5 POWER WIRING DIAGRAM
N.T.S.



7 LIGHTING CIRCUIT No.6 POWER WIRING DIAGRAM
N.T.S.



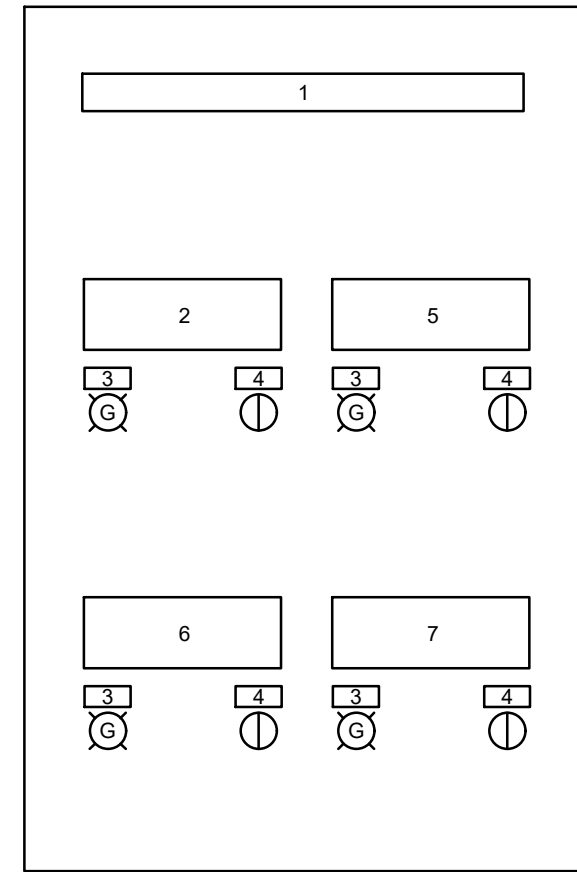
8 LIGHTING CIRCUIT No.7 POWER WIRING DIAGRAM
N.T.S.



9 LIGHTING CIRCUIT No.8 POWER WIRING DIAGRAM
N.T.S.

GENERAL NOTES:

- COORDINATE WITH MANITOBA HYDRO STREET LIGHTING DEPARTMENT FOR THE PROVISION OF A NEW 100A, 1Ø, 3W, 120/240V UNDERGROUND POWER SERVICE TO NEW CSTE "C". PRIOR TO COMMENCEMENT OF WORK CONTRACTOR TO FINALIZE ARRANGEMENTS WITH MANITOBA HYDRO INCLUDING STAKING FINAL GRADES OF THE AREA IN ADDITION TO CONFIRMING LOCATIONS OF UTILITY SERVICE POLE(S), TRANSFORMERS, ROUTING OF UNDERGROUND UTILITY POWER SERVICE CONDUCTORS, TRENCHING AND BACKFILLING, ETC. ALL WORK SHALL BE IN ACCORDANCE WITH MANITOBA HYDRO CUSTOMER METERING STANDARDS. 3. RD. EDITION. AUGUST 1, 2015.
- MAINTAIN 1.0 METER (MIN.) SEPARATION BETWEEN MB HYDRO U/G UTILITY SERVICE CONDUCTORS AND CUSTOMER'S SUPPLIED U/G SITE LIGHTING CIRCUIT POWER FEEDER CONDUCTORS. NO SHARED TRENCHING SHALL BE PERMITTED.



LAMACOID SCHEDULE

- LIGHTING CONTROL SECTION
- UNDER BRIDGE LIGHTING CIRCUIT No.5 SOUTH BOUND LANE
- LIGHTING CIRCUIT ENERGIZED
- LIGHTING CIRCUIT CONTROL HAND/OFF/AUTO
- UNDER BRIDGE LIGHTING CIRCUIT No.6 NORTH BOUND LANE
- PATHWAY LIGHTING CIRCUIT No.7 CONCORDIA AVE. W.
- PATHWAY LIGHTING CIRCUIT No.8 CONCORDIA AVE. E.

3 LIGHTING CONTROL SECTION PROPOSED LAYOUT
N.T.S.

PANEL TAG NAME: "C" (FEEDS PATHWAY & UNDERBRIDGE LIGHTING)		100A, 120/240V, 1ø, 3W MAINS: 100A, Cu MAIN BKR: NONE				MOUNTING: INTERIOR CSTE PAD MOUNTED ENCLOSURE		
LOAD (W)	CIRCUIT DESCRIPTION	AMP	CIRCUITS			AMP	CIRCUIT DESCRIPTION	LOAD (W)
100	LIGHTING CONTROL CIRCUIT	15	1	A	2	20	PATHWAY LIGHTING CIRCUIT #7 CONCORDIA AVE. - WEST	366
408	UNDER BRIDGE LIGHTING CIRCUIT #5 SOUTH BOUND LANE	20	3	B	4	20	PATHWAY LIGHTING CIRCUIT #8 CONCORDIA AVE. - EAST	549
			5	A	6			
408	UNDER BRIDGE LIGHTING CIRCUIT #6 NORTH BOUND LANE	20	7	B	8	20	SPARE	
			9	A	10			
			11	B	12			
			13	A	14			
			15	B	16			
			17	A	18			
PROVIDE LAMACOID LABELS TO THIS SUB PANEL INDICATING: "WARNING: UNDERGROUND FEEDS TO MULTIPLE SITE LOCATIONS"								

PROVIDE LAMACOID LABELS TO THIS SUB PANEL INDICATING:
"WARNING: UNDERGROUND FEEDS TO MULTIPLE SITE LOCATIONS"

4 PANEL "C" SCHEDULE
N.T.S.



R.M. ELEV.			
0	ISSUED FOR TENDER	25.08.07	DWD
NO.	REVISIONS	DATE	BY



TETRA TECH

DESIGNED BY	DWD	CHECKED BY	DWD
DRAWN BY	ABA	APPROVED BY	JNC
HOR. SCALE:	AS NOTED	ACCEPTED BY	DATE
VERTICAL:	AS NOTED	CAM WARD, P.ENG.	25.08.07

CONSULTANT DRAWING NO.
734-INF-MB103007.01-DWG-E4407



THE CITY OF WINNIPEG
PUBLIC WORKS DEPARTMENT
ENGINEERING DIVISION

LAGIMODIERE TWIN OVERPASSES
OVER CONCORDIA AVE. & CPR KEEWATIN
REHABILITATION AND RELATED WORKS
ACTIVE TRANSPORTATION - LAGIMODIERE BLVD.
CSTE "B" - ELECTRICAL DETAILS

CITY DRAWING NUMBER
P123-25-4407
SHEET 7 OF 8
4407