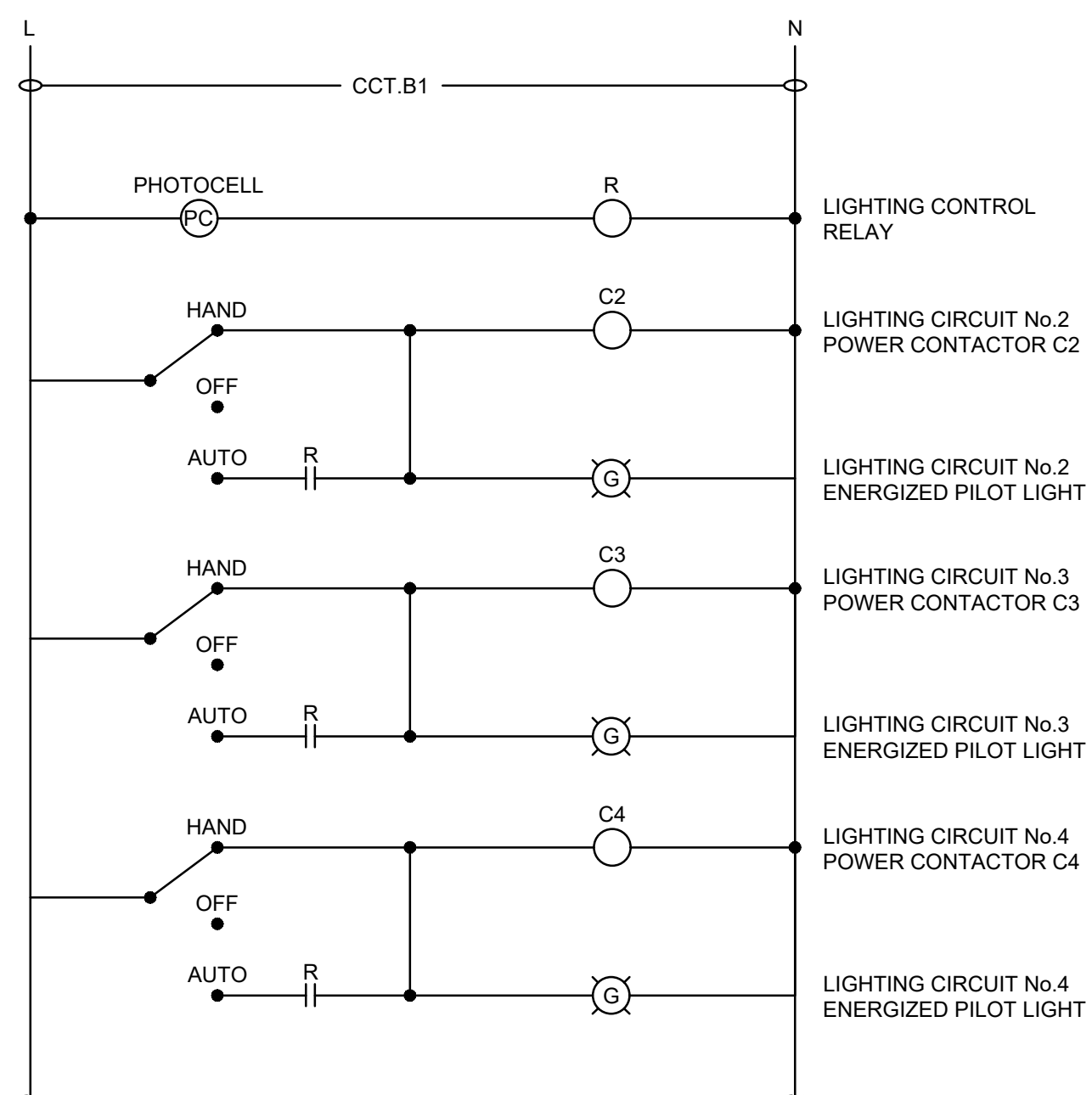
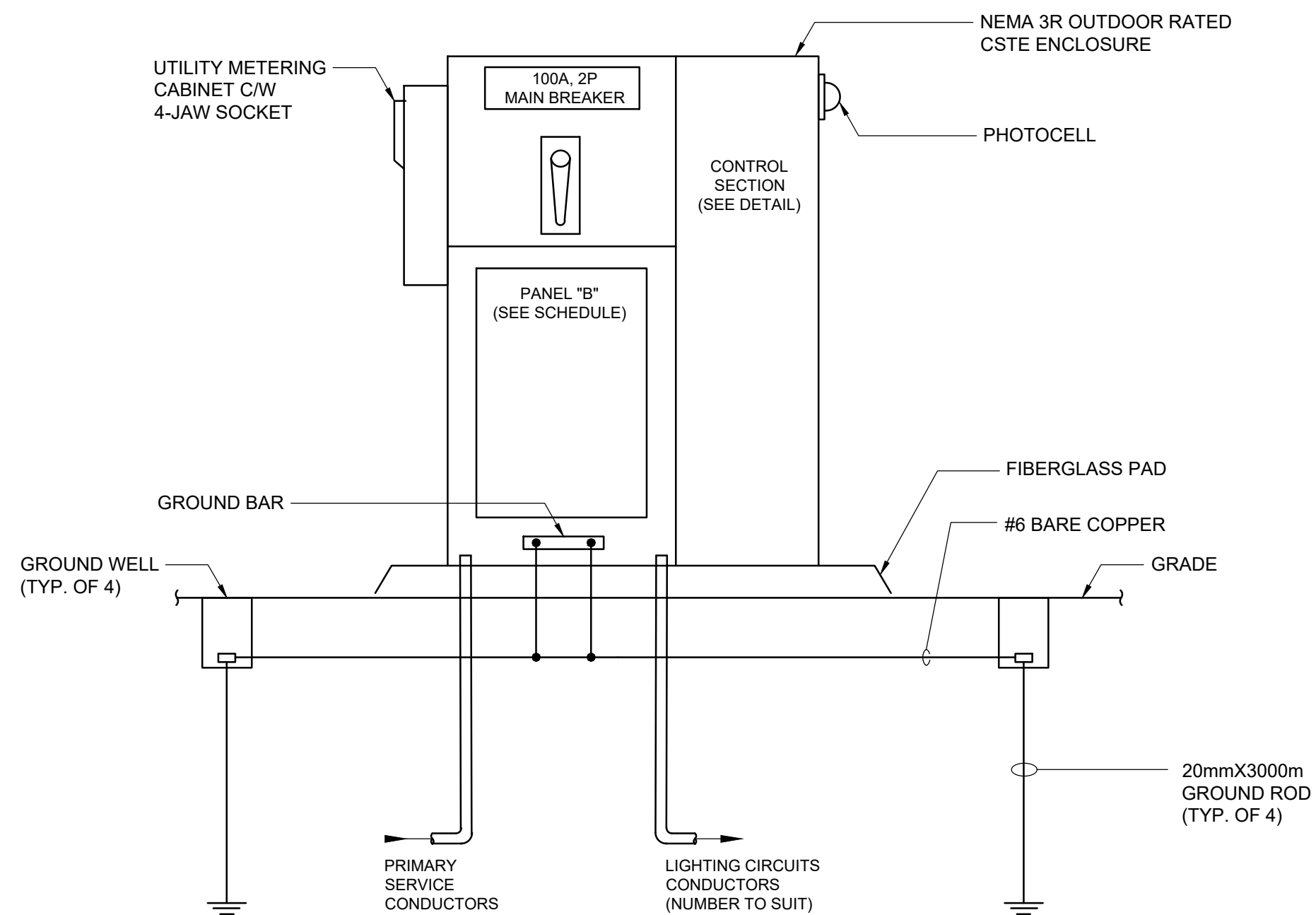


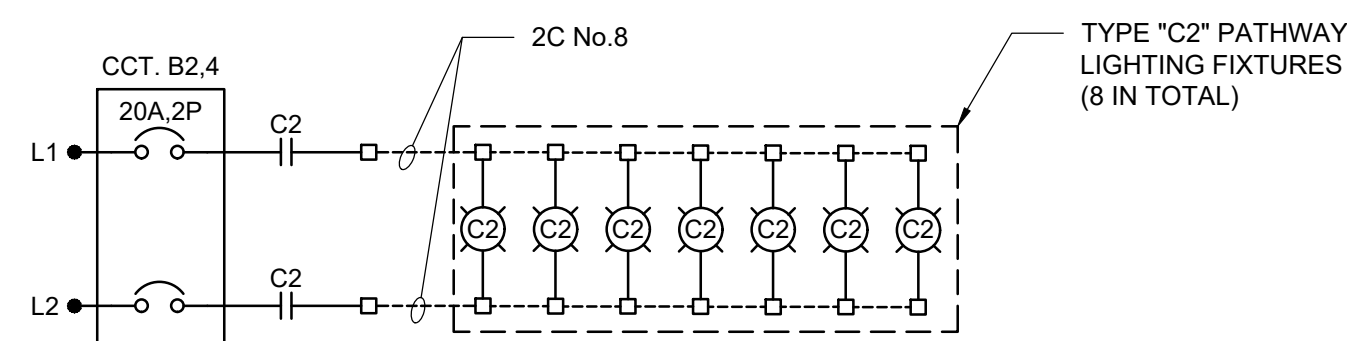
1 SINGLE LINE DIAGRAM  
N.T.S.



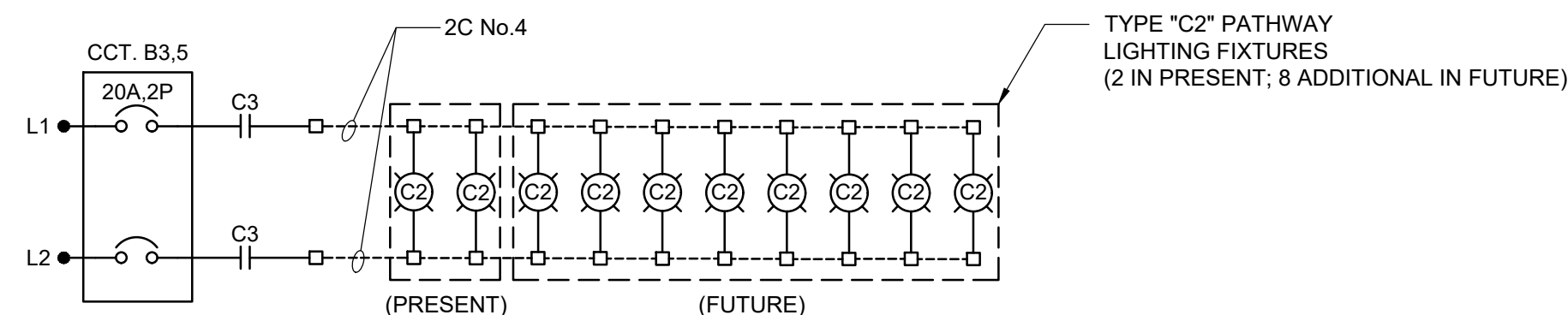
5 LIGHTING CONTROL CIRCUIT WIRING DIAGRAM  
N.T.S.



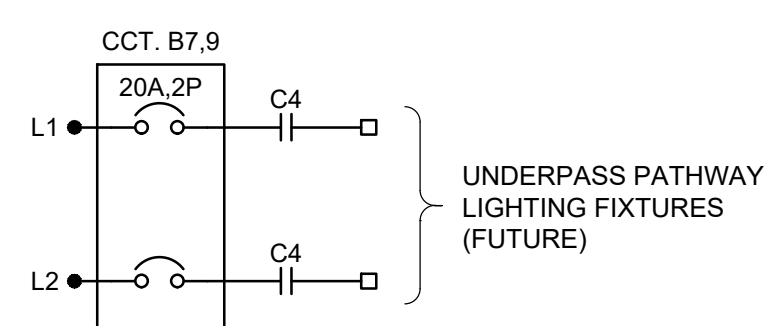
2 CSTE "B" PROPOSED LAYOUT (FRONT DOOR REMOVED)  
N.T.S.



6 LIGHTING CIRCUIT No.2 POWER WIRING DIAGRAM  
N.T.S.





7 LIGHTING CIRCUIT No.3 POWER WIRING DIAGRAM  
N.T.S.



8 LIGHTING CIRCUIT No.4 POWER WIRING DIAGRAM  
N.T.S.



B.M. ELEV.				<div>TETRA TECH</div>				<div>THE CITY OF WINNIPEG PUBLIC WORKS DEPARTMENT ENGINEERING DIVISION</div>					
				DESIGNED BY	DWD	CHECKED BY	DWD	LAGIMODIERE TWIN OVERPASSES		CITY DRAWING NUMBER			
				DRAWN BY	ABA	APPROVED BY	JNC	OVER CONCORDIA AVE. & CPR KEEWATIN		P123-25-4406			
				HOR. SCALE: AS NOTED			ACCEPTED BY	DATE	REHABILITATION AND RELATED WORKS		SHEET 6 OF 8		
0	ISSUED FOR TENDER		25.08.07	DWD	VERTICAL: AS NOTED			CAM WARD, P.ENG.	25.08.07	ACTIVE TRANSPORTATION - LAGIMODIERE BLVD.		4406	
NO.	REVISIONS		DATE	BY	DATE 25.08.07					CSTE "B" - ELECTRICAL DETAILS			
								CONSULTANT DRAWING NO.					
								734-INF MB103007.01-DWG-E4406					