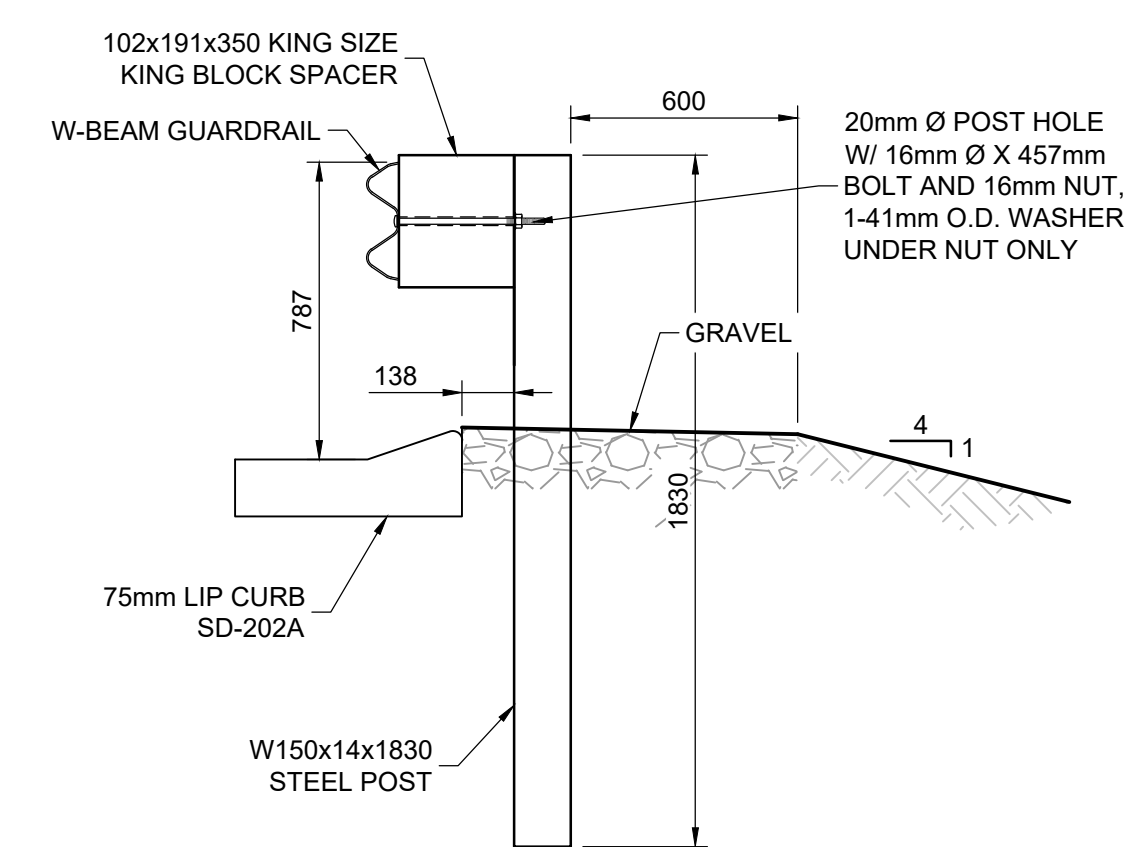
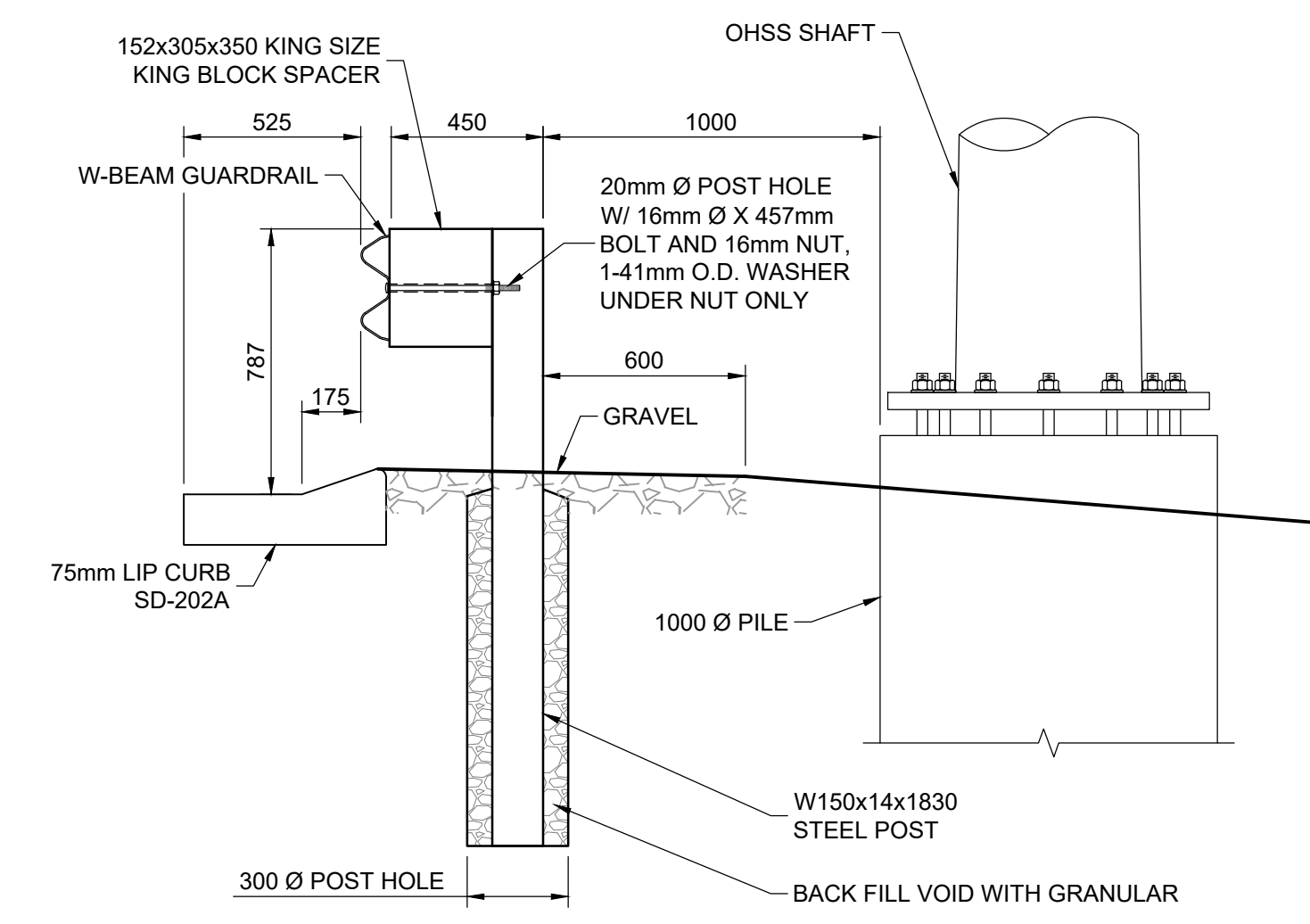


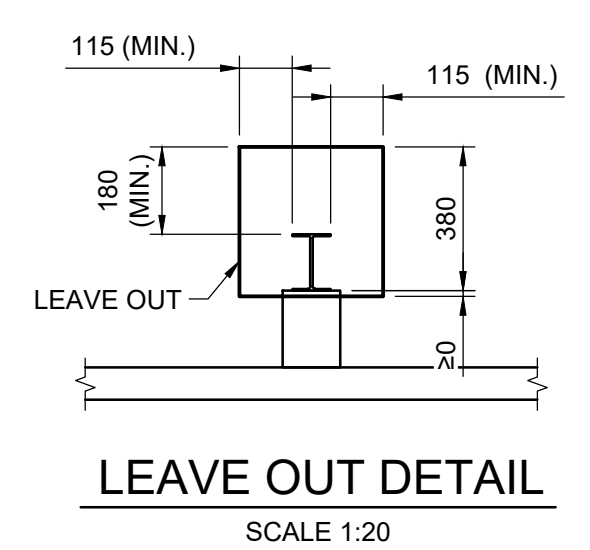
A APPROACH GUARDRAIL SECTION
4315 4316 1:20



B MIDWEST GUARDRAIL SECTION
4315/4316 4316 1:20



C GUARDRAIL SECTION
4315 4316 1:20



METRIC

WHOLE NUMBERS INDICATE MILLIMETRES
DECIMALIZED NUMBERS INDICATE METRES



B.M. ELEV.				TETRA TECH				THE CITY OF WINNIPEG PUBLIC WORKS DEPARTMENT	
				DESIGNED BY BG	REVIEWED BY JT			LAGIMODIERE TWIN OVERPASSES OVER CPKC KEEWATIN REHABILITATION AND RELATED WORKS	
				DRAWN BY BG	APPROVED BY JNC			CITY DRAWING NUMBER P123-25-4316	
				SCALE: 1:50 OR AS NOTED	ACCEPTED BY CAM WARD, P.ENG. 25.08.07			SHEET OF 16 20	
0	ISSUED FOR TENDER	25.08.07	JNC	DATE 2025.08.07		CONSULTANT DRAWING NO. 734-INF-MB103007.01-DWG-C4316		GUARDRAIL DETAILS EXIT RAMP NORTHBOUND (2 OF 2) NORTH OF BRIDGE, RIGHT SIDE	
NO.	REVISIONS	DATE	BY					4316	