

CONC	CONCRETE ROADWAY
ASP	ASPHALT ROADWAY
ASP OVLY	ASPHALT OVERLAY ROADWAY
PVS	PAVING STONE/BRICK
TYP	TYPICAL
EX	EXISTING
MH	MANHOLE
WV	WATER VALVE
EL	ELEVATION
CB	CATCH BASIN
CP	CATCH PIT
CI	CURB INLET
CL	CONTROL LINE

WHOLE NUMBERS INDICATE MILLIMETRES
DECIMALIZED NUMBERS INDICATE METRES

IF POWER EQUIPMENT OR EXPLOSIVES ARE TO BE USED FOR EXCAVATION ON THIS PROJECT THE CONTRACTOR MUST:

1. NOTIFY THE GAS COMPANY OF THE PROPOSED LOCATION OF EXCAVATION.
2. TAKE PRECAUTION TO AVOID DAMAGE TO GAS COMPANY INSTALLATIONS SEE PROVINCIAL REGULATION 210/72 FOR DETAILS.
3. OBTAIN EXCAVATION PERMITS PRIOR TO CONSTRUCTION.



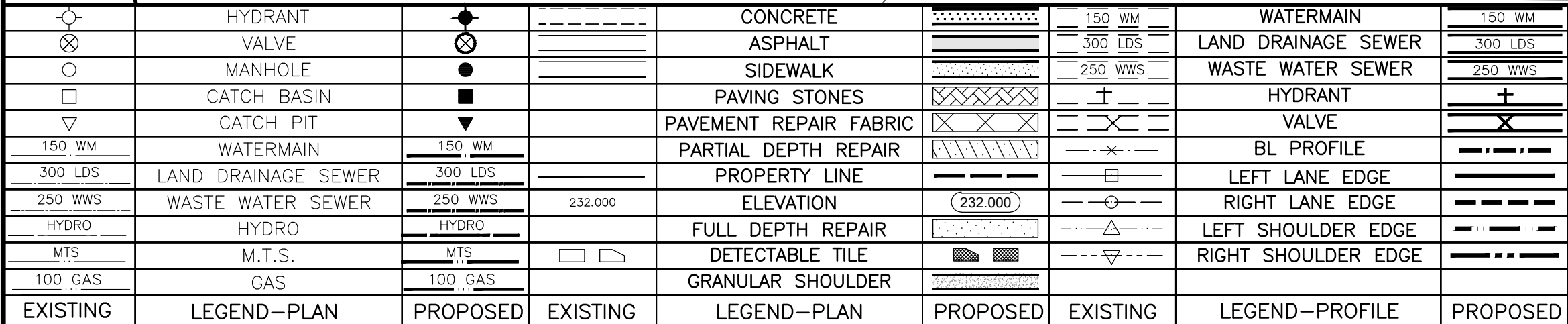
THE CITY OF WINNIPEG
PUBLIC WORKS DEPARTMENT

LAGIMODIERE TWIN OVERPASSES OVER CPKC KEEWATIN REHABILITATION AND RELATED WORKS

CONCORDIA INTERCHANGE RAMPS
EXIT RAMP (NB) - PLAN PROFILE
STA. 2+000 TO 2+160

CITY DRAWING NUMBER
P123-25-4246
SHEET OF
46 62

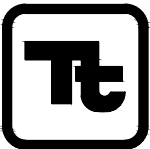
4246



UNDERGROUND STRUCTURES

LOCATION OF UNDERGROUND STRUCTURES AS SHOWN ARE BASED ON THE BEST INFORMATION AVAILABLE, BUT NO GUARANTEE IS GIVEN THAT ALL EXISTING UTILITIES ARE SHOWN OR THAT THE GIVEN LOCATIONS ARE EXACT. CONFIRMATION OF EXISTENCE AND EXACT LOCATION OF ALL SERVICES MUST BE OBTAINED FROM THE INDIVIDUAL UTILITIES BEFORE PROCEEDING WITH CONSTRUCTION.

B.M.			
ELEV.			
0	ISSUED FOR TENDER	25.08.07	JNC
NO.	REVISIONS	DATE	BY



TETRA TECH

DESIGNED BY EF

JT

DRAWN BY EF

APPROVED BY JNC

SCALE: H 1:250

ACCEPTED BY

DATE 25.08.07

CONSULTANT DRAWING NO.

734-INF.MBI03007.01-DWG-C42.