

CONSTRUCTION NOTES:

1. ALL WORK AND MATERIALS TO BE IN ACCORDANCE WITH LATEST REVISION OF THE CITY OF WINNIPEG STANDARD CONSTRUCTION SPECIFICATIONS.
2. LEGAL PLAN AND UNDERGROUND INFORMATION FROM CITY OF WINNIPEG LBIS. CONTRACTOR TO VERIFY ALL UNDERGROUNDS IN THE FIELD.
3. CONTRACTOR TO TAKE PRECAUTIONARY STEPS TO AVOID DAMAGE FROM CONSTRUCTION ACTIVITIES TO TREES WITHIN THE LIMITS OF CONSTRUCTION.
4. LOCATION OF EXISTING UTILITIES/SERVICES TO BE CONFIRMED IN THE FIELD BY THE CONTRACTOR.
5. ADJUST EXISTING WATER VALVES AND WATER SERVICE CURB STOPS TO GRADE.
6. ADJUST MANHOLE AND CATCH BASIN RIMS TO NEW GRADES.
7. CONTRACTOR TO REGRADE/RENEW EXISTING PRIVATE SIDEWALKS TO LIMITS AS SHOWN. SIDEWALKS TO BE RENEWED WITH CONCRETE UNLESS OTHERWISE NOTED.
8. CB LEADS TO BE INSTALLED AT MIN 1.0% SLOPE OR AS DIRECTED BY THE CONTRACT ADMINISTRATOR.
9. LIMITS OF BOULEVARD GRADING TO BE FINALIZED IN THE FIELD BY THE CONTRACT ADMINISTRATOR.
10. INSTALL 6 m OF 150 mm SUBDRAIN TO CATCH BASINS IN BOTH DIRECTIONS PARALLEL TO ROADWAY AS PER SD-245 AND CAP ENDS.
11. CONTRACTOR SHALL INSTALL 1.5M WIDE GLASGRID FOR ALL PARTIAL DEPTH JOINT REPAIRS

ABBREVIATIONS:

CONC	CONCRETE ROADWAY
ASP	ASPHALT ROADWAY
ASP OVLY	ASPHALT OVERLAY ROADWAY
PVS	PAVING STONE/BRICK
TYP	TYPICAL
EX	EXISTING
MH	MANHOLE
WW	WATER VALVE
EL	ELEVATION
CB	CATCH BASIN
CP	CATCH PIT
CI	CURB INLET
CL	CONTROL LINE

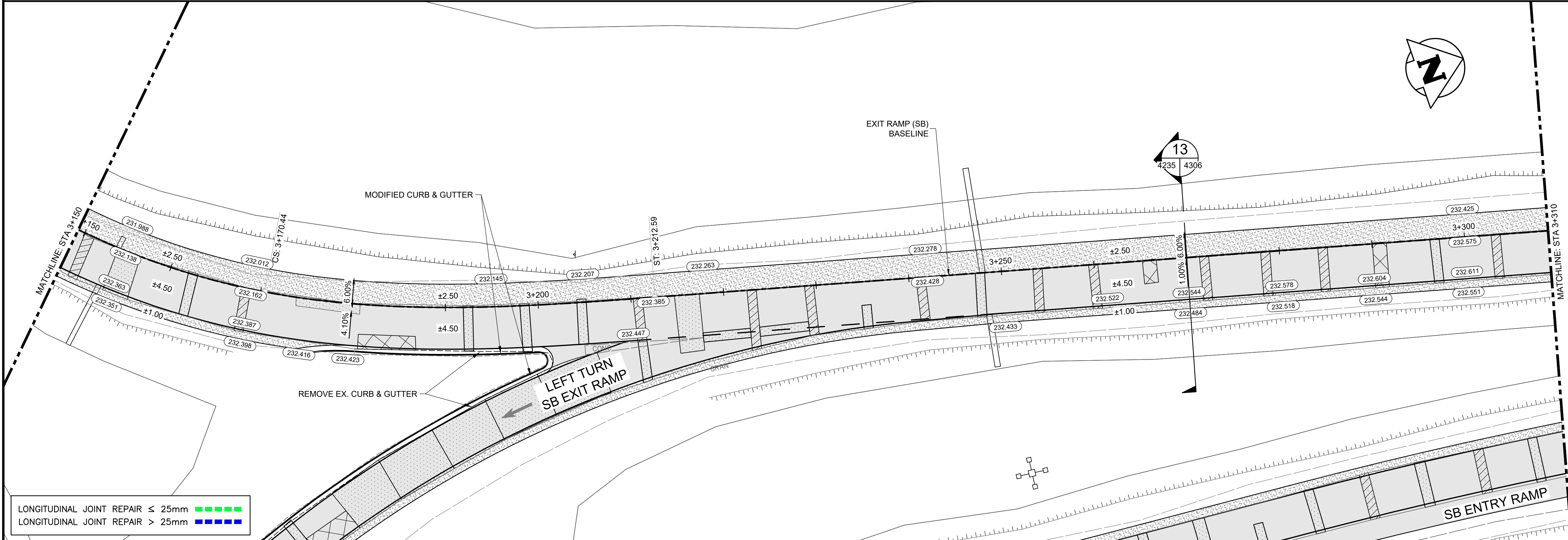
METRIC

WHOLE NUMBERS INDICATE MILLIMETRES
DECIMALIZED NUMBERS INDICATE METRES

WARNING

IF POWER EQUIPMENT OR EXPLOSIVES ARE TO BE USED FOR EXCAVATION ON THIS PROJECT THE CONTRACTOR MUST:

1. NOTIFY THE GAS COMPANY OF THE PROPOSED LOCATION OF EXCAVATION.
2. TAKE PRECAUTION TO AVOID DAMAGE TO GAS COMPANY INSTALLATIONS SEE PROVINCIAL REGULATION 210/72 FOR DETAILS.
3. OBTAIN EXCAVATION PERMITS PRIOR TO CONSTRUCTION.



○	HYDRANT	◆	CONCRETE	▨	150 WM	—	WATERMAIN	▨	150 WM
⊗	VALVE	⊗	ASPHALT	▨	300 LDS	—	LAND DRAINAGE SEWER	▨	300 LDS
○	MANHOLE	●	SIDEWALK	▨	250 WWS	—	WASTE WATER SEWER	▨	250 WWS
□	CATCH BASIN	▨	PAVING STONES	▨	—	—	HYDRANT	▨	—
▽	CATCH PIT	▨	PAVEMENT REPAIR FABRIC	▨	—	—	VALVE	▨	—
150 WM	WATERMAIN	150 WM	PARTIAL DEPTH REPAIR	▨	—	—	BL PROFILE	▨	—
300 LDS	LAND DRAINAGE SEWER	300 LDS	PROPERTY LINE	▨	—	—	LEFT LANE EDGE	▨	—
250 WWS	WASTE WATER SEWER	250 WWS	ELEVATION	▨	—	—	RIGHT LANE EDGE	▨	—
HYDRO	HYDRO	HYDRO	FULL DEPTH REPAIR	▨	—	—	LEFT SHOULDER EDGE	▨	—
MTS	M.T.S.	MTS	DETECTABLE TILE	▨	—	—	RIGHT SHOULDER EDGE	▨	—
100 GAS	GAS	100 GAS	GRANULAR SHOULDER	▨	—	—	—	—	—
EXISTING	LEGEND—PLAN	PROPOSED	EXISTING	LEGEND—PLAN	PROPOSED	EXISTING	LEGEND—PROFILE	PROPOSED	—

UNDERGROUND STRUCTURES

LOCATION OF UNDERGROUND STRUCTURES, AS SHOWN ARE BASED ON THE BEST INFORMATION AVAILABLE, BUT NO GUARANTEE IS GIVEN THAT ALL EXISTING UTILITIES ARE SHOWN OR THAT THE GIVEN LOCATIONS ARE EXACT. CONFIRMATION OF EXISTENCE AND EXACT LOCATION OF ALL SERVICES MUST BE OBTAINED FROM THE INDIVIDUAL UTILITIES BEFORE PROCEEDING WITH CONSTRUCTION.

B.M.	ELEV.			
0	ISSUED FOR TENDER	25.08.07	JNC	
NO.	REVISIONS	DATE	BY	

DESIGNED BY EF		REVIEWED BY JT	
DRAWN BY EF		APPROVED BY JNC	
SCALE: H 1:250		ACCEPTED BY DATE	
V 1:10		CAM WARD, P.ENG. 25.08.07	
DATE 25.08.07			

CONSULTANT DRAWING NO.		CITY DRAWING NUMBER	
734-INF-MBIO3007.01-DWG-C4235		P123-25-4235	
LAGIMODIERE TWIN OVERPASSES OVER CPKC KEEWATIN REHABILITATION AND RELATED WORKS		SHEET OF 35 62	
CONCORDIA INTERCHANGE RAMPS EXIT RAMP (SB) - PLAN PROFILE STA. 3+150 TO 3+310		4235	

THE CITY OF WINNIPEG
PUBLIC WORKS DEPARTMENT

