

CONSTRUCTION NOTES:

- ALL WORK AND MATERIALS TO BE IN ACCORDANCE WITH LATEST REVISION OF THE CITY OF WINNIPEG STANDARD CONSTRUCTION SPECIFICATIONS.
- LEGAL PLAN AND UNDERGROUND INFORMATION FROM CITY OF WINNIPEG LBIS. CONTRACTOR TO VERIFY ALL UNDERGROUNDS IN THE FIELD.
- CONTRACTOR TO TAKE PRECAUTIONARY STEPS TO AVOID DAMAGE FROM CONSTRUCTION ACTIVITIES TO TREES WITHIN THE LIMITS OF CONSTRUCTION.
- LOCATION OF EXISTING UTILITIES/SERVICES TO BE CONFIRMED IN THE FIELD BY THE CONTRACTOR.
- ADJUST EXISTING WATER VALVES AND WATER SERVICE CURB STOPS TO GRADE.
- ADJUST MANHOLE AND CATCH BASIN RIMS TO NEW GRADES.
- CONTRACTOR TO REGRADE/RENEW EXISTING PRIVATE SIDEWALKS TO LIMITS AS SHOWN. SIDEWALKS TO BE RENEWED WITH CONCRETE UNLESS OTHERWISE NOTED.
- CB LEADS TO BE INSTALLED AT MIN 1.0% SLOPE OR AS DIRECTED BY THE CONTRACT ADMINISTRATOR.
- LIMITS OF BOULEVARD GRADING TO BE FINALIZED IN THE FIELD BY THE CONTRACT ADMINISTRATOR.
- INSTALL 6 m OF 150 mm SUBDRAIN TO CATCH BASINS IN BOTH DIRECTIONS PARALLEL TO ROADWAY AS PER SD-245 AND CAP ENDS.
- CONTRACTOR SHALL INSTALL 1.5M WIDE GLASGRID FOR ALL PARTIAL DEPTH JOINT REPAIRS.

ABBREVIATIONS:

CONC	CONCRETE ROADWAY
ASP	ASPHALT ROADWAY
ASP OVLY	ASPHALT OVERLAY ROADWAY
PVS	PAVING STONE/BRICK
TYP	TYPICAL
EX	EXISTING
MH	MANHOLE
WV	WATER VALVE
EL	ELEVATION
CB	CATCH BASIN
CP	CATCH PIT
CI	CURB INLET
CL	CONTROL LINE

METRIC

WHOLE NUMBERS INDICATE MILLIMETRES
DECIMALIZED NUMBERS INDICATE METRES

WARNING

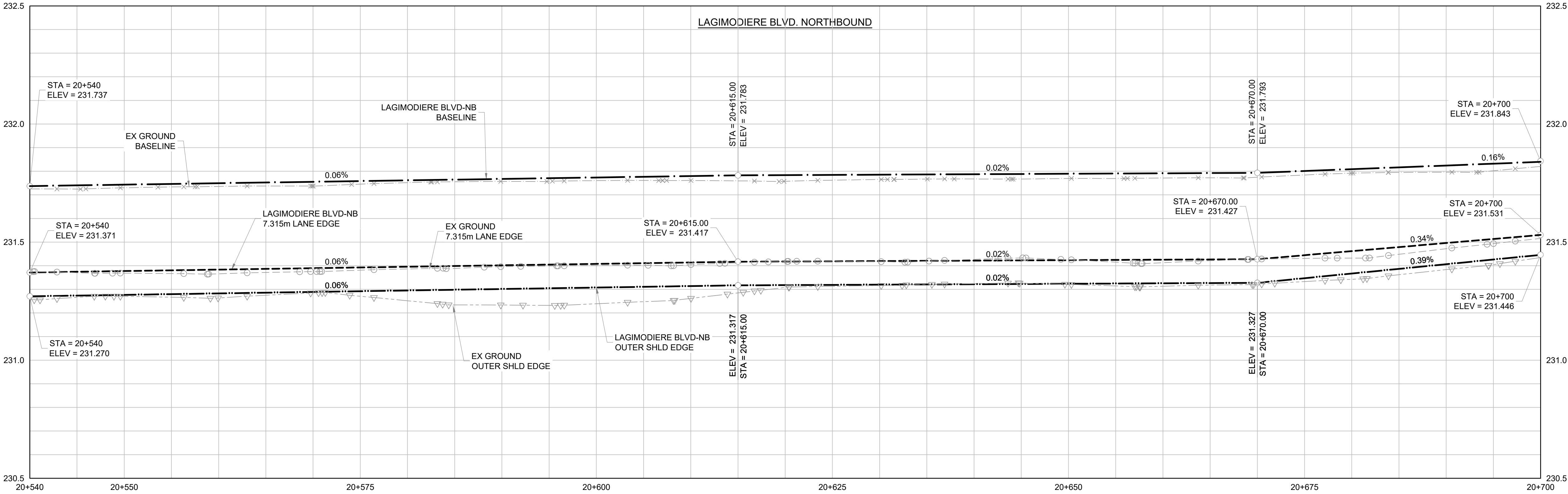
IF POWER EQUIPMENT OR EXPLOSIVES ARE TO BE USED FOR EXCAVATION ON THIS PROJECT THE CONTRACTOR MUST:

- NOTIFY THE GAS COMPANY OF THE PROPOSED LOCATION OF EXCAVATION.
- TAKE PRECAUTION TO AVOID DAMAGE TO GAS COMPANY INSTALLATIONS SEE PROVINCIAL REGULATION 210/72 FOR DETAILS.
- OBTAIN EXCAVATION PERMITS PRIOR TO CONSTRUCTION.



THE CITY OF WINNIPEG
PUBLIC WORKS DEPARTMENT

LAGIMODIERE TWIN OVERPASSES OVER CPKC KEEWATIN REHABILITATION AND RELATED WORKS	CITY DRAWING NUMBER
	P123-25-4206
	SHEET OF 6 62
LAGIMODIERE BOULEVARD - PROFILE STA. 20+540 TO 20+700 (NB)	4206



	HYDRANT			CONCRETE		150 WM	WATERMAIN	
	VALVE			ASPHALT		300 LDS	LAND DRAINAGE SEWER	
	MANHOLE			PAVING STONES		250 WWS	WASTE WATER SEWER	
	CATCH BASIN			PAVEMENT REPAIR FABRIC			HYDRANT	
	CATCH PIT			PARTIAL DEPTH REPAIR			BL PROFILE	
	WATERMAIN			FULL DEPTH REPAIR			NORTH/WEST LANE	
	LAND DRAINAGE SEWER			PROPERTY LINE			SOUTH/EAST LANE	
	WASTE WATER SEWER			ELEVATION			OUTER SHOULDER EDGE	
	HYDRO		232.000	DETECTABLE TILE			SOUTH/EAST DITCH	
	M.T.S.			GRANULAR SHOULDER			LEFT/RIGHT TURN	
	GAS							
EXISTING	LEGEND—PLAN	PROPOSED	EXISTING	LEGEND—PLAN	PROPOSED	EXISTING	LEGEND—PROFILE	PROPOSED

UNDERGROUND STRUCTURES

LOCATION OF UNDERGROUND STRUCTURES, AS SHOWN, ARE BASED ON THE BEST INFORMATION AVAILABLE. BUT NO GUARANTEE IS GIVEN THAT ALL EXISTING UTILITIES ARE SHOWN OR THAT THE GIVEN LOCATIONS ARE EXACT. CONFIRMATION OF EXISTENCE AND EXACT LOCATION OF ALL SERVICES MUST BE OBTAINED FROM THE INDIVIDUAL UTILITIES BEFORE PROCEEDING WITH CONSTRUCTION.

B.M. ELEV.			
0	ISSUED FOR TENDER	25.08.07	JNC
NO.	REVISIONS	DATE	BY



TETRA TECH

DESIGNED BY EF	REVIEWED BY JT
DRAWN BY EF	APPROVED BY JNC
SCALE: H 1:250 V 1:10	ACCEPTED BY DATE CAM WARD, P.ENG. 25.08.07

CONSULTANT DRAWING NO.
734-INF.MBI03007.01-DWG-C4206