

235
234
233
232
231
230
229
228
227
226

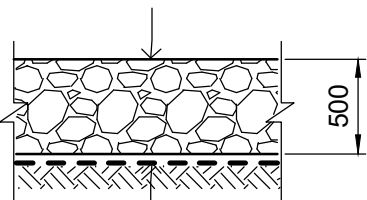
CONSTRUCTION NOTES:

1. ALL WORKS TO BE CONSTRUCTED IN ACCORDANCE WITH THE LATEST REVISION OF THE CITY OF WINNIPEG STANDARD CONSTRUCTION SPECIFICATIONS AND THE SPECIFICATIONS FOR THIS CONTRACT.
2. THE CONTRACTOR IS RESPONSIBLE FOR CONTACTING UTILITY COMPANIES AND ARRANGING FOR LOCATES FOR ALL UNDERGROUND INFRASTRUCTURE AND SAFETY WATCHES DURING CONSTRUCTION. LOCATES SHOULD BE UNDERTAKEN PRIOR TO CONSTRUCTION.
3. LOCATION OF EXISTING UTILITIES/SERVICES TO BE CONFIRMED IN THE FIELD BY THE CONTRACTOR.
4. THE CONTRACTOR IS RESPONSIBLE FOR THE CONTROL OF RUNOFF FROM RAINFALL, SNOWMELT, GROUNDWATER, INFRASTRUCTURE OR EQUIPMENT DURING ALL STAGES OF THE PROJECT.
5. CONTRACTOR TO TAKE PRECAUTIONARY STEPS TO AVOID DAMAGE FROM CONSTRUCTION ACTIVITIES TO TREES WITHIN THE LIMITS OF CONSTRUCTION.
6. TRENCHES AND EXCAVATIONS WITHIN 1 METRE OF A PAVED AREA INCLUDING SIDEWALKS SHALL BE CLASS 3 BACKFILL.
7. ANY RESTORATION OF PAVEMENT CUTS MUST ADHERE TO THE PAVEMENT RESTORATION GUIDELINES IN THE MOST RECENT EDITION OF THE CITY OF WINNIPEG'S STREET CUTS MANUAL.
8. THE CONTRACTOR IS RESPONSIBLE FOR ALL INCIDENTAL EROSION CONTROL MEASURES.

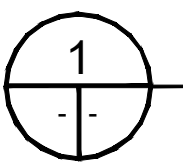
"CAUTION
EXACT LOCATIONS OF EXISTING UTILITIES
AT TIME OF DESIGN UNKNOWN.
CONTRACTOR TO LOCATE ALL CONNECTIONS AND
UTILITIES PRIOR TO CONSTRUCTION.
ALIGNMENTS OF PROPOSED SEWERS ARE
SUBJECT TO CHANGE DUE TO CONFLICTS.

METRIC

WHOLE NUMBERS INDICATE MILLIMETRES
DECIMALIZED NUMBERS INDICATE METRES



CLASS 350 RIPRAP
SEPARATION GEOTEXTILE

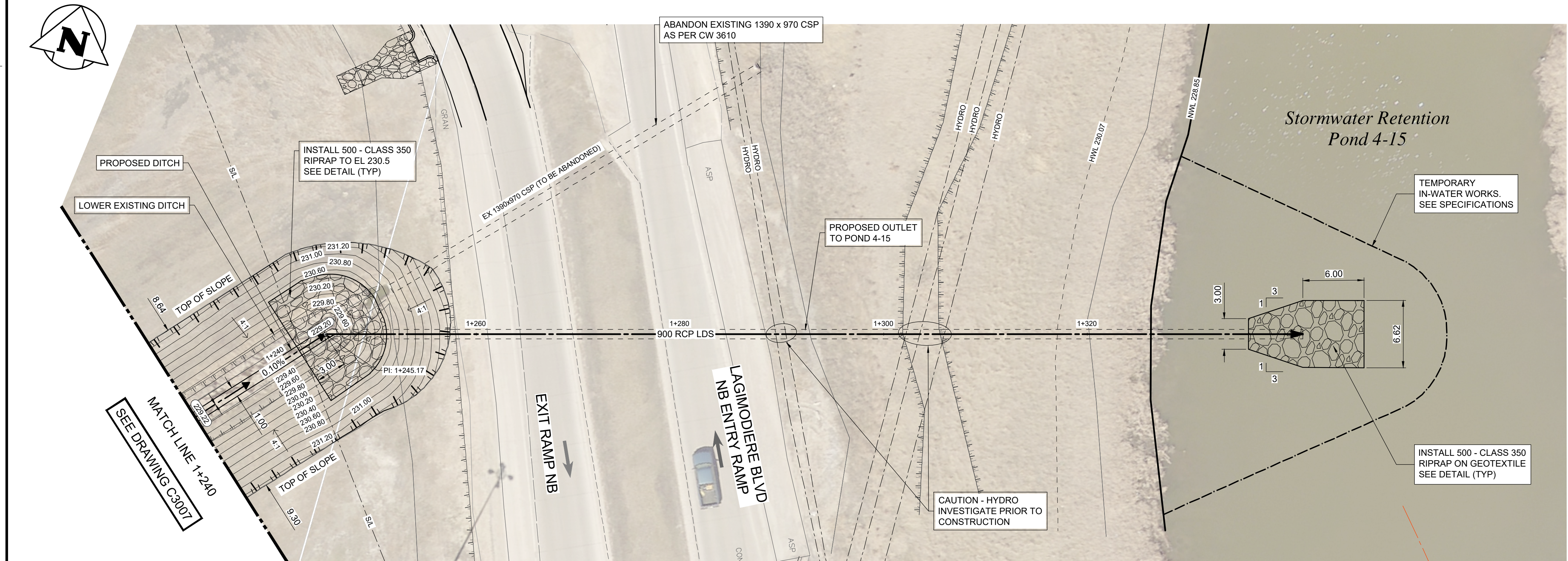
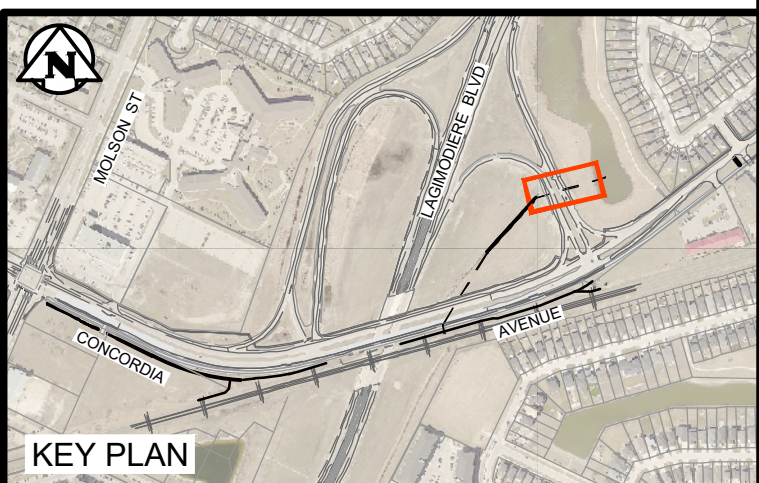


RIRAP SECTION

1 : 40



Certificate of Authorization
Tetra Tech Canada Inc.
No. 6499



	HYDRANT			CONCRETE		150 WM	WATERMAIN	
	VALVE			ASPHALT		300 LDS	LAND DRAINAGE SEWER	
	MANHOLE			SIDEWALK		250 WWS	WASTE WATER SEWER	
	CATCH BASIN			PROPERTY LINE			HYDRANT	
	CATCH PIT		232.000	ELEVATION			VALVE	
	WATERMAIN						C PROFILE	
	LAND DRAINAGE SEWER						NORTH/WEST GUTTER	
	WASTE WATER SEWER						SOUTH/EAST GUTTER	
	HYDRO						NORTH/WEST DITCH	
	BELLMTS						SOUTH/EAST DITCH	
	GAS							
EXISTING	LEGEND-PLAN	PROPOSED	EXISTING	LEGEND-PLAN	PROPOSED	EXISTING	LEGEND-PROFILE	PROPOSED