

SCHEDULE

1. YEAR 2 - NOVEMBER 2026 TO NOVEMBER 2027

MAJOR CONSTRUCTION ACTIVITIES (RELATED TO LAGIMODIERE TRAFFIC STAGING)

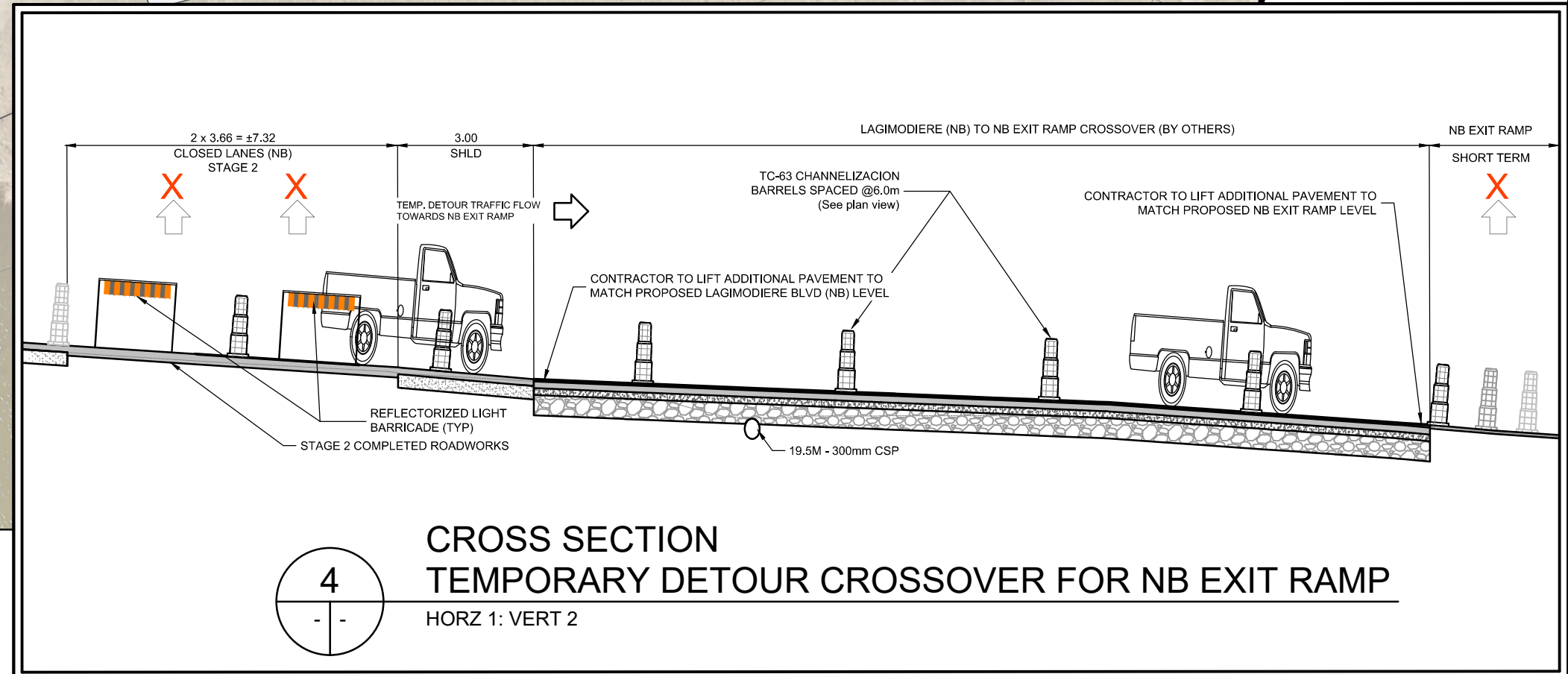
1. BRIDGE REHABILITATION - (NB)
2. ROADWORKS - LAGIMODIERE BLVD.(NB) REHABILITATION, EAST RAMPS REHABILITATION AND REQUIRED EMBANKMENT WIDENING WORKS
3. ACTIVE TRANSPORTATION WORKS - CONSTRUCTION OF CONCORDIA AVE ROUTE FROM MOLSON ST TO PEGUIS ST., INCLUDING NEW CURB/CURB AND GUTTER, AND ROAD REPROFILING, AND EAST APPROACH TO UNDERPASS

TRAFFIC AND PEDESTRIAN CONTROL

1. ALL EXISTING PEDESTRIAN ROUTES TO BE MAINTAINED DURING CONSTRUCTION.
2. REGULATORY SIGNS TO BE COVERED AS DIRECTED BY THE CONTRACT ADMINISTRATOR.
3. CONTRACTOR TO SUBMIT AND IMPLEMENT SITE-SPECIFIC TRAFFIC MANAGEMENT PLANS TO CONTRACT ADMINISTRATOR FOR APPROVAL FOR THE FOLLOWING REHABILITATION AGES (ALL PLANS SHALL BE SUBMITTED THREE WEEKS IN ADVANCE OF INTENDED CLOSURE):
 - LANE AT A TIME ALONG LAGIMODIERE
 - GRASSIE/LAGIMODIERE INTERSECTION
 - CONCORDIA/LAGIMODIERE INTERCHANGE RAMP

RAMP CLOSURE ROUTE DETOURS

1. THE CITY OF WINNEPEG WILL SUPPLY AND INSTALL ALL TRAFFIC CONTROL RELATED TO TRUCK AND GENERAL TRAFFIC ROUTE DETOURS.
2. CONTRACTOR SHALL NOTIFY THE CONTRACT ADMINISTRATOR AND SUBMIT A SITE-SPECIFIC TRAFFIC MANAGEMENT PLAN AT LEAST ONE MONTH IN ADVANCE OF ANY SCHEDULED RAMP CLOSURE.
3. THE NORTHBOUND RIGHT TURN LANE AT GRASSIE BOULEVARD SHALL REMAIN OPEN AT ALL TIMES DURING THE CLOSURE OF THE EASTBOUND RAMPS.



LEGEND



LANE-AT-A-TIME CONSTRUCTION

SHORT TERM CONSTRUCTION

LONG TERM CONSTRUCTION

TEMP PAVEMENT TO ACCOMMODATE TRAFFIC STAGING (BY OTHERS)

ACTIVE TRANSPORTATION CONSTRUCTION



TRAFFIC MOVEMENTS

LANE CLOSED

SEQUENTIAL ARROW TRAFFIC CONTROL DEVICE

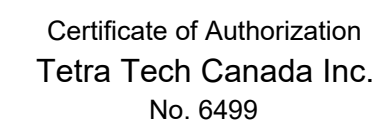
TALL CONES

BARRELS

PEDESTRIAN/CYCLIST TRAFFIC

PLAN

Scale 1 :500



METRIC

WHOLE NUMBERS INDICATE MILLIMETRES
DECIMALIZED NUMBERS INDICATE METRES

B.M. ELEV.			
0	ISSUED FOR TENDER	25.08.07	JNC
NO.	REVISIONS	DATE	BY



DESIGNED BY	DL	REVIEWED BY	JT
DRAWN BY	DD	APPROVED BY	JNC
SCALE:	AS NOTED	ACCEPTED BY	DATE
DATE	25.08.07	CAM WARD, P. ENG.	25.08.07

CONSULTANT DRAWING NO.
704-INF.MBI03007.01-DWG-C 1021



THE CITY OF WINNIPEG
PUBLIC WORKS DEPARTMENT
ENGINEERING DIVISION

LAGIMODIERE TWIN OVERPASSES
OVER CPKC KEEWATIN
REHABILITATION AND RELATED WORKS

TRAFFIC MANAGEMENT PLAN-STAGE-2
STA 21+350 NB TO STA 21+690 NB
LAGIMODIERE BOULEVARD

CITY DRAWING NUMBER	
P123-25-1014	
SHEET	OF 31
1021	