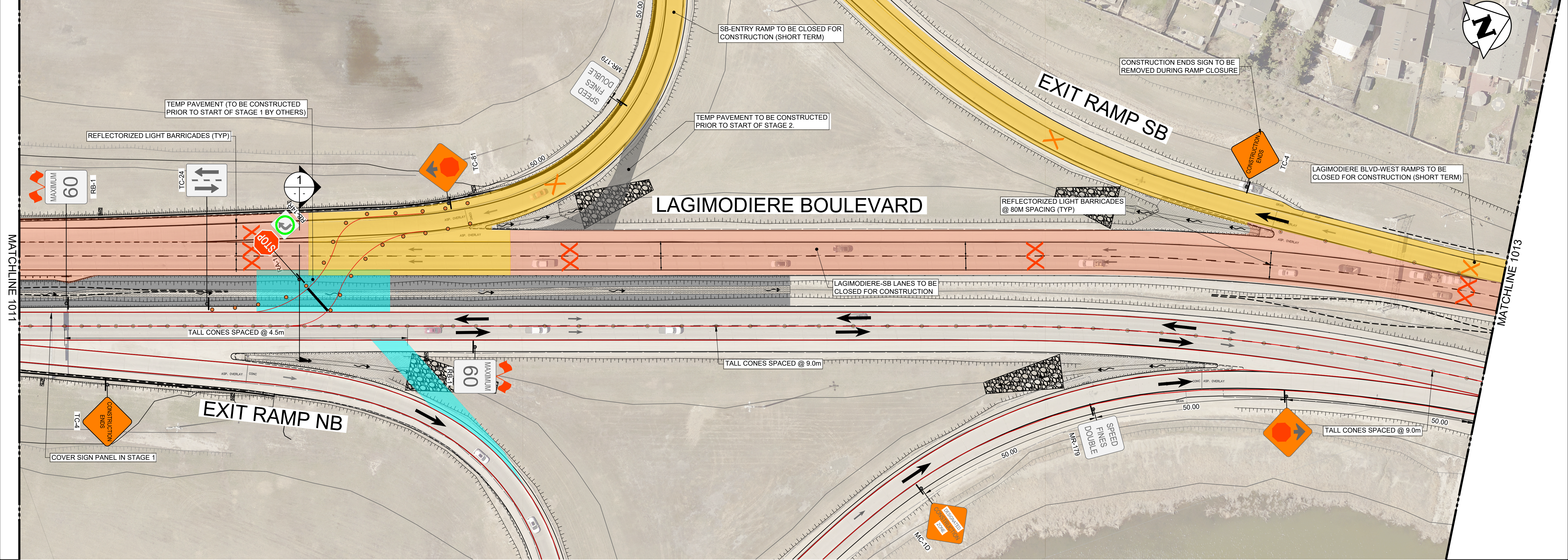
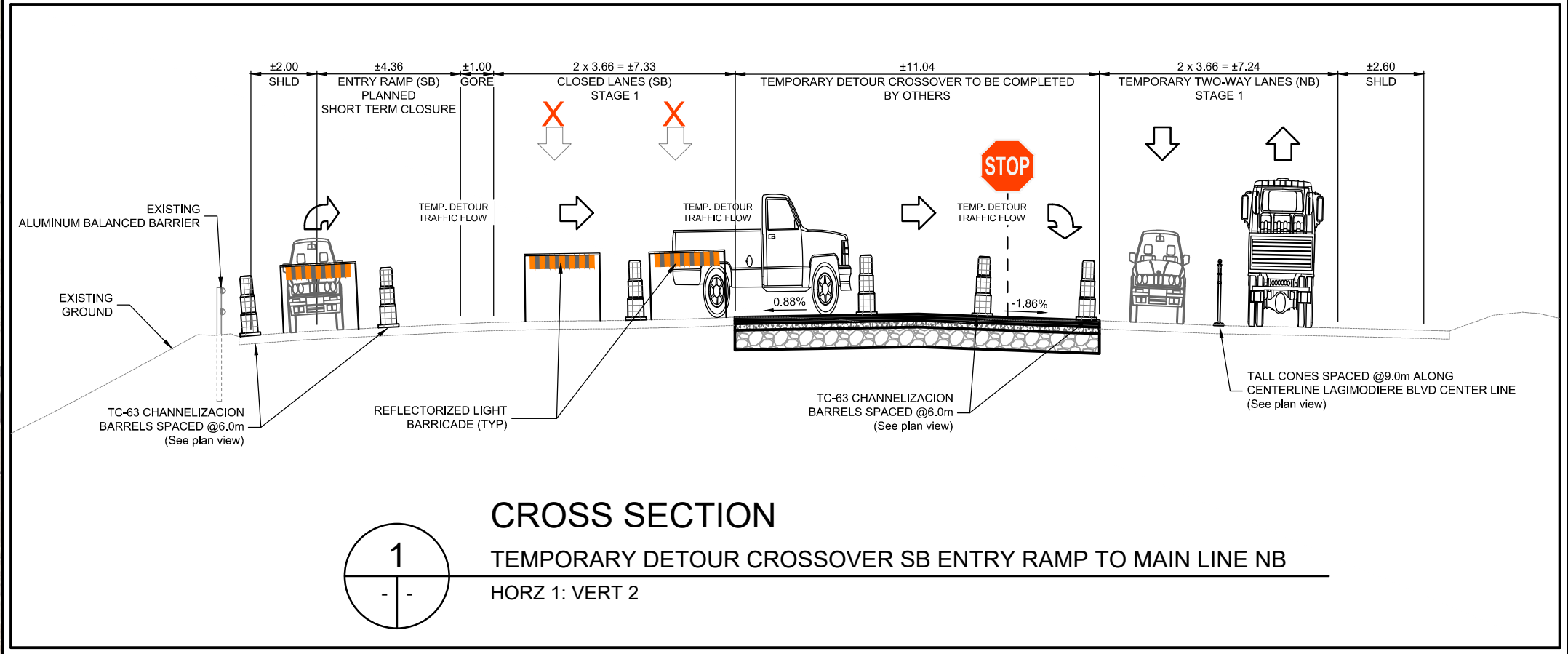


- STAGE 1 NOTES**
- SCHEDULE**
1. YEAR 1 - NOVEMBER 2025 TO NOVEMBER 2026
- MAJOR CONSTRUCTION ACTIVITIES (RELATED TO LAGIMODIERE TRAFFIC STAGING)**
1. BRIDGE REHABILITATION - (SB)
2. ROADWORKS - LAGIMODIERE BLVD.(SB) REHABILITATION, WEST SIDE RAMPS REHABILITATION, AND WEST SIDE EMBANKMENT WIDENING WORKS
3. ACTIVE TRANSPORTATION WORKS - CONSTRUCTION OF LAGIMODIERE-RAVELSTON PATHWAY
- TRAFFIC AND PEDESTRIAN CONTROL**
1. LANE AT A TIME CONSTRUCTION FOR LAGIMODIERE BLVD. (NB).
• ALMEY AVE. TO SOUTH CROSS OVER
• NORTH CROSS OVER TO GRASSIE BLVD.
2. LANE AT A TIME CONSTRUCTION FOR LAGIMODIERE BLVD. (SB).
• NORTH OF GRASSIE BLVD. OF NORTHERLY CROSS OVER.
3. CONTRACTOR TO SUBMIT AND IMPLEMENT SITE-SPECIFIC TRAFFIC MANAGEMENT PLANS TO CONTRACT ADMINISTRATOR FOR APPROVAL FOR THE FOLLOWING REHABILITATION AREAS (ALL PLANS SHALL BE SUBMITTED THREE WEEKS IN ADVANCE OF INTENDED CLOSURE):
• LANE AT A TIME ALONG LAGIMODIERE
• GRASSIE/LAGIMODIERE INTERSECTION
• CONCORDIA/LAGIMODIERE INTERCHANGE RAMPS
4. LEFT TURN MOVEMENT FROM LAGIMODIERE BLVD. (SB) TO GRASSIE BLVD. (EB) TO BE MAINTAINED DURING CONSTRUCTION
5. LEFT TURN MOVEMENT FROM LAGIMODIERE BLVD. (NB) TO GRASSIE BLVD. (WB) TO BE MAINTAINED DURING CONSTRUCTION.
6. ALL EXISTING PEDESTRIAN ROUTES TO BE MAINTAINED DURING CONSTRUCTION, INCLUDING CONCORDIA AVE NORTH SIDEWALK DURING BRIDGE REHABILITATION WORKS.
7. REGULATORY SIGNS TO BE COVERED AS DIRECTED BY THE CONTRACT ADMINISTRATOR.
8. REQUIRED LANE CLOSURES TO CONFORM TO CITY OF WINNIPEG MANUAL OF TEMPORARY TRAFFIC CONTROL.
9. REQUIRED WORKS ON RIGHT TURN CUT-OFFS TO ACCOMMODATE REQUIRED TRAFFIC MOVEMENTS.
- RAMP CLOSURE ROUTE DETOURS**
1. THE CITY OF WINNIPEG WILL SUPPLY AND INSTALL ALL TRAFFIC CONTROL RELATED TO TRUCK AND GENERAL TRAFFIC ROUTE DETOURS.
2. CONTRACTOR SHALL NOTIFY THE CONTRACT ADMINISTRATOR AND SUBMIT A SITE-SPECIFIC TRAFFIC MANAGEMENT PLAN AT LEAST ONE MONTH IN ADVANCE OF ANY SCHEDULED RAMP CLOSURE.
3. THE NORTHBOUND RIGHT TURN LANE AT GRASSIE BOULEVARD SHALL REMAIN OPEN AT ALL TIMES DURING THE CLOSURE OF THE EASTBOUND RAMPS.



LEGEND

- LANE-AT-A-TIME CONSTRUCTION
- SHORT TERM CONSTRUCTION
- LONG TERM CONSTRUCTION
- TEMP PAVEMENT TO ACCOMMODATE TRAFFIC STAGING (BY OTHERS)
- ACTIVE TRANSPORTATION CONSTRUCTION

- TRAFFIC MOVEMENTS
- LANE CLOSED
- SEQUENTIAL ARROW TRAFFIC CONTROL DEVICE
- TALL CONES
- BARRELS
- PEDESTRIAN/CYCLIST TRAFFIC


PLAN

Scale 1 :500



METRIC

WHOLE NUMBERS INDICATE MILLIMETRES
DECIMALIZED NUMBERS INDICATE METRES

B.M. ELEV.				<div>TETRA TECH</div>			
				DESIGNED BY DL	REVIEWED BY JT		
				DRAWN BY DD	APPROVED BY JNC		
				SCALE:	AS NOTED		ACCEPTED BY DATE
0	ISSUED FOR TENDER		25.08.07	JNC	CAM WARD, P.ENG.		25.08.07
NO.	REVISIONS		DATE	BY	DATE	25.08.07	



THE CITY OF WINNIPEG
PUBLIC WORKS DEPARTMENT
ENGINEERING DIVISION

LAGIMODIERE TWIN OVERPASSES OVER CPKC KEEWATIN REHABILITATION AND RELATED WORKS		CITY DRAWING NUMBER P123-25-1005
TRAFFIC MANAGEMENT PLAN-STAGE-1 STA 21+360 NB TO STA 21+700 NB LAGIMODIERE BOULEVARD		SHEET OF 12 31
		1012