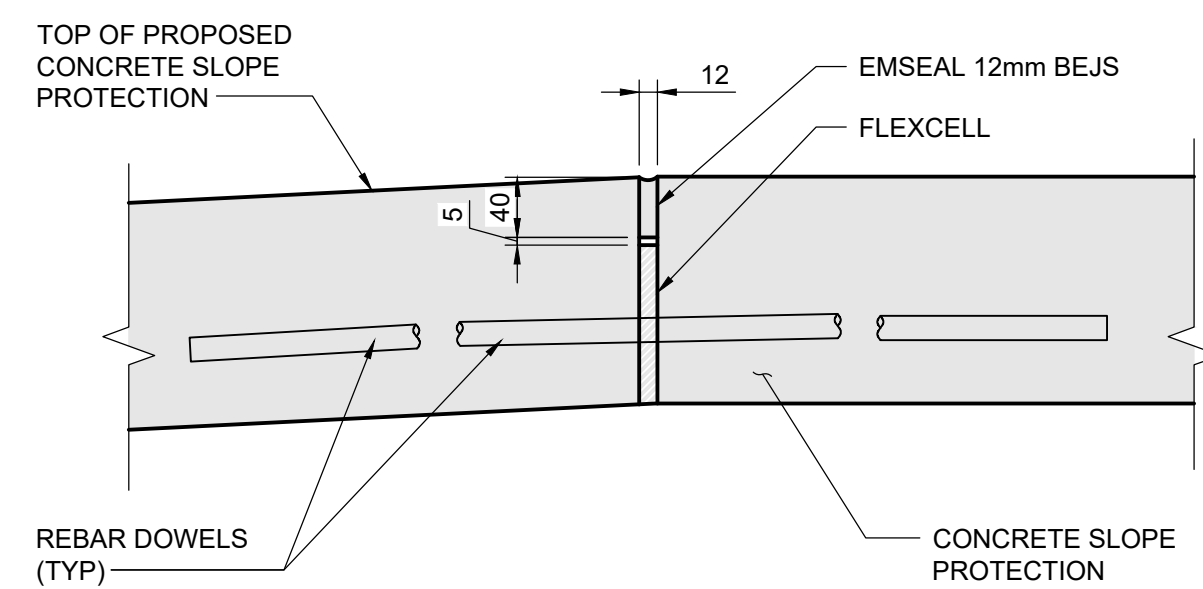
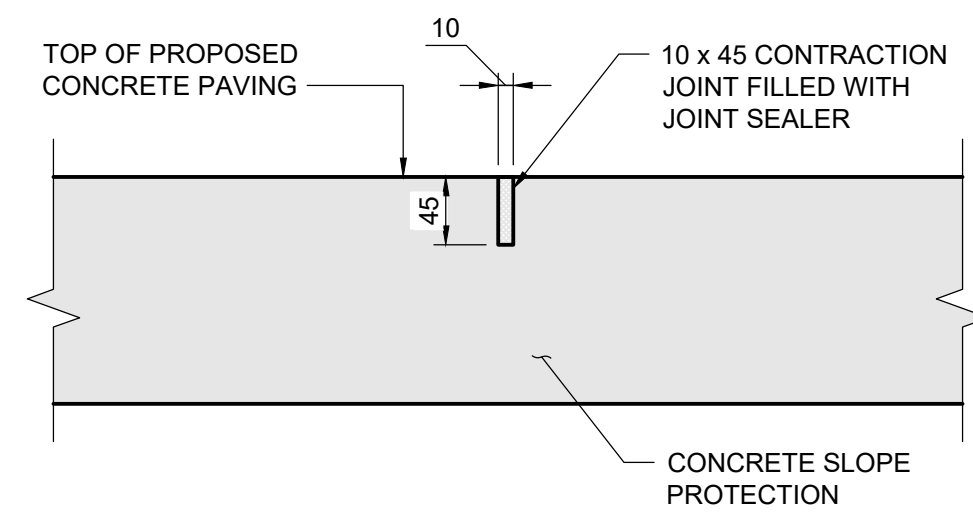


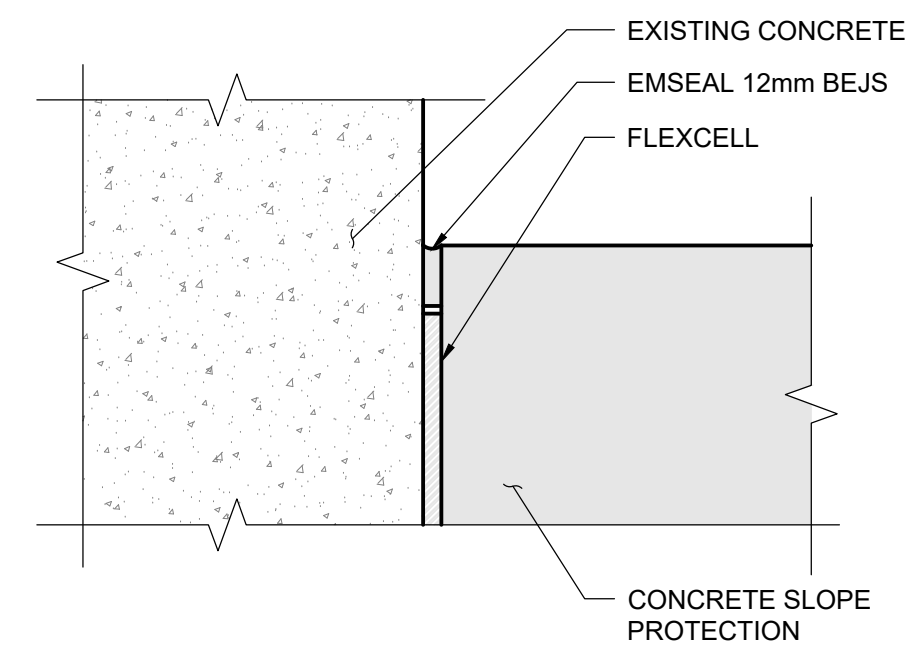
1 SECTION - CONCRETE SLOPE PROTECTION
2242 2243 1 : 25



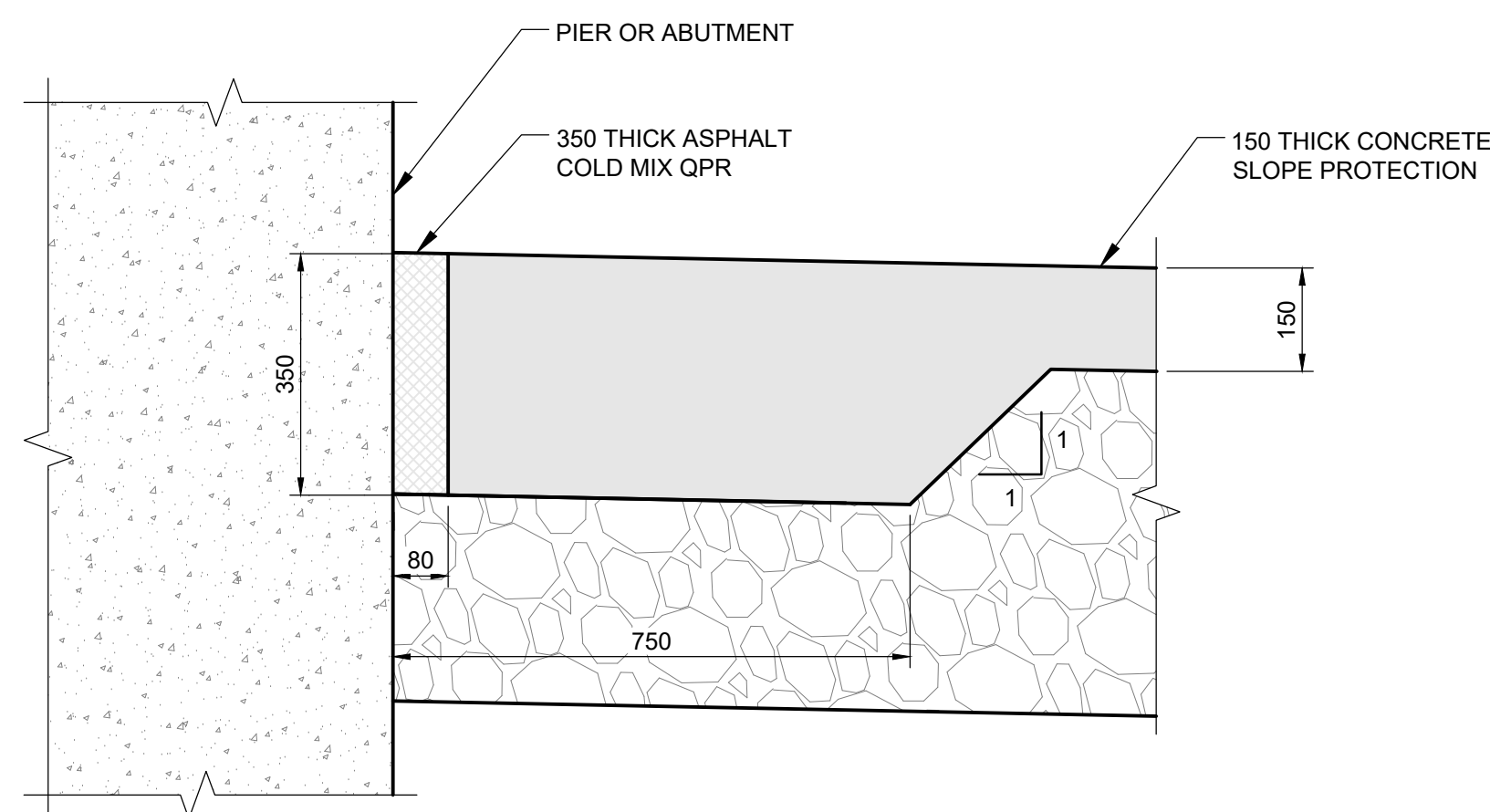
2 DETAIL - CONSTRUCTION JOINT TYPE "J1"
1 : 5



3 DETAIL - CONSTRUCTION JOINT TYPE "J2"
1 : 5





4 DETAIL - ALTERNATIVE CONSTRUCTION JOINT
1 : 5



5 DETAIL - CONSTRUCTION JOINT
1 : 10



B.M. ELEV.				<div>TETRA TECH</div>				<div>THE CITY OF WINNIPEG PUBLIC WORKS DEPARTMENT ENGINEERING DIVISION</div>							
				DESIGNED BY	RL	REVIEWED BY	SA	LAGIMODIERE TWIN OVERPASSES OVER CPKC KEEWATIN REHABILITATION AND RELATED WORKS				CITY DRAWING NUMBER B123-25-2243			
				DRAWN BY	EV	APPROVED BY	KA					SHEET 43 OF 48			
				SCALE: AS NOTED		ACCEPTED BY DATE CAM WARD, P.ENG. 25.08.07									
0	ISSUED FOR TENDER			25.08.07	SA					NORTHBOUND STRUCTURE SOUTH ABUTMENT SLOPE PROTECTION CONCRETE DETAILS				2243	
NO	REVISIONS			DATE	BY	DATE	25.08.07								