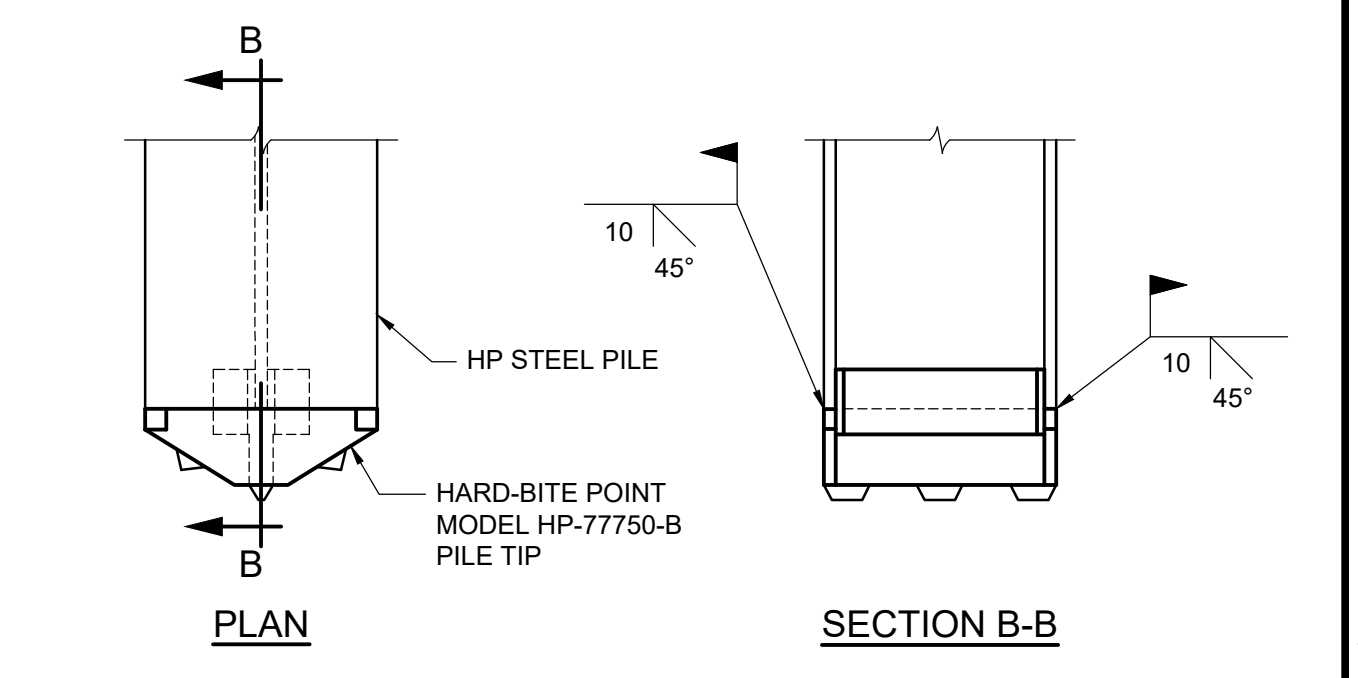


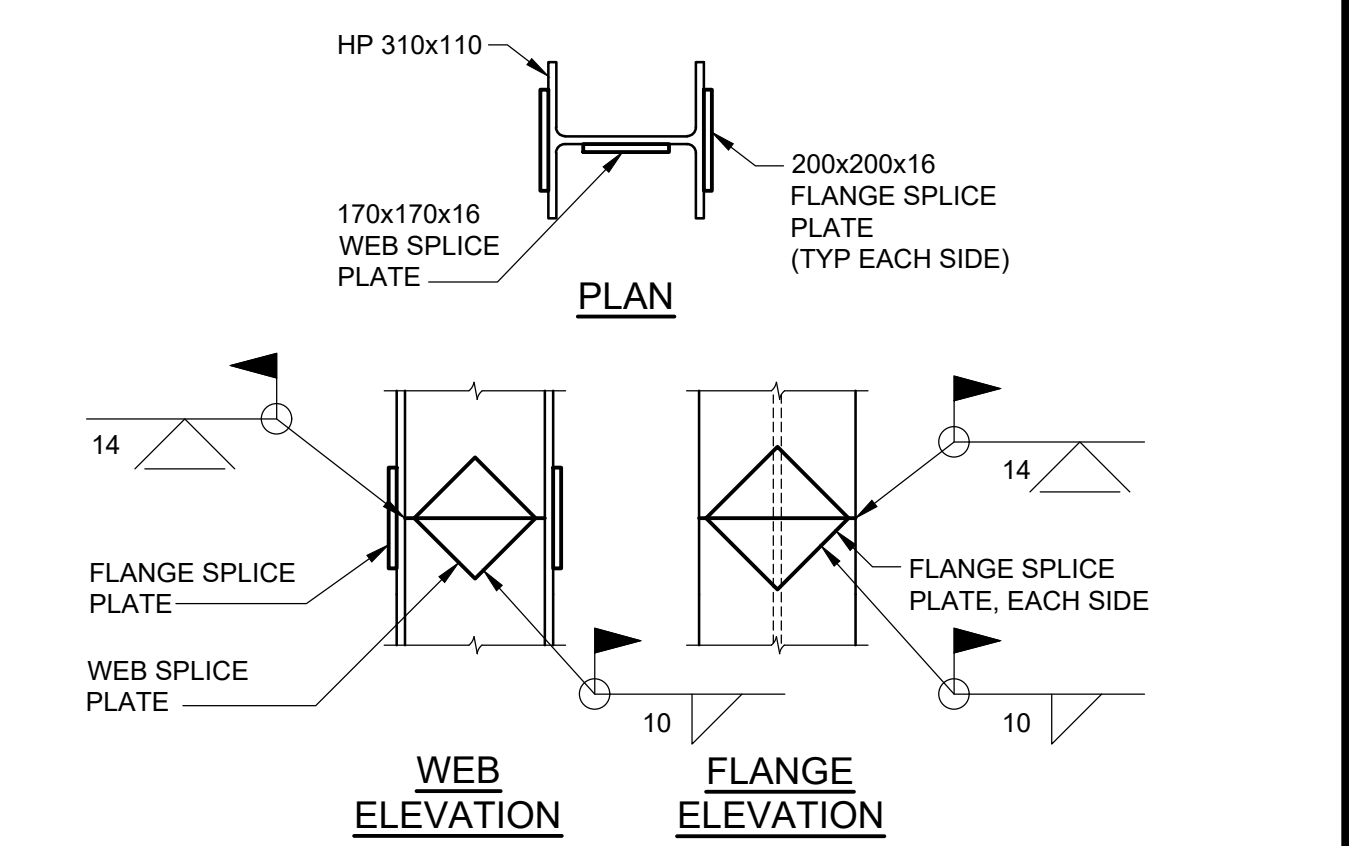
BILL OF PILES				
LOCATION	NO.	DESCRIPTION	ESTIMATED TOTAL LENGTH (m)	ESTIMATED TOTAL LENGTH (m)
NORTH GRADE BEAM	6	STEEL PILES - HP 310x110	26.50	159.00
	6	HARD-BITE POINT HP-77750 FOR HP 310x110		
TOTAL LENGTH (m) =			159.00	

PILE ELEVATIONS		
PILE Mk.	PILE CUT OFF ELEV (m)	ESTIMATED PILE TIP ELEV (m)
NB-N1	239.858	214.500
NB-N2	239.808	214.500
NB-N3	239.737	214.500
NB-N4	239.687	214.500
NB-N5	239.616	214.500
NB-N6	239.566	214.500


- GENERAL NOTES:
- SPACING OF PILES, FOR ALL FOOTINGS AS SHOWN, IS AT THE BOTTOM OF FOOTINGS.
 - H-PILES ARE TO BE DRIVEN TO PRACTICAL REFUSAL IN BEDROCK AND TO AN APPROXIMATE MINIMUM TIP ELEVATION OF 214.5m.



- WELDING NOTES:
- LOW HYDROGEN E480 SERIES ELECTRODES SHALL BE USED.
 - THE MINIMUM ROOT PASS SHALL BE 6mm.
 - BEFORE UNDERTAKING THE BACK WELDS, THE WELD PREPARATION SHALL BE CARRIED OUT WITH A CARBON ARC-AIR GOUGER.



ENGINEERS
GEOSCIENTISTS
MANITOBA
Certificate of Authorization
Tetra Tech Canada Inc.
No. 6499

B.M. ELEV.				<div></div> <div>TETRA TECH</div>			
				DESIGNED BY	RL	REVIEWED BY	SA
				DRAWN BY	EV	APPROVED BY	KA
				SCALE:		AS NOTED	
0	ISSUED FOR TENDER		25.08.07	SA	ACCEPTED BY		DATE
					CAM WARD, P.ENG.		25.08.07
NO.	REVISIONS		DATE	BY	DATE	25.08.07	

CONSULTANT DRAWING NO.

704-INF.MBI03007.01-DWG-S2

THE CITY OF WINNIPEG PUBLIC WORKS DEPARTMENT ENGINEERING DIVISION			CITY DRAWING NUMBER
LAGIMODIERE TWIN OVERPASSES OVER CPKC KEEWATIN REHABILITATION AND RELATED WORKS			B123-25-2236
NORTHBOUND STRUCTURE NORTH APPROACH CONCRETE DETAILS			SHEET 36 OF 48
SHEET 2 OF 3			2236