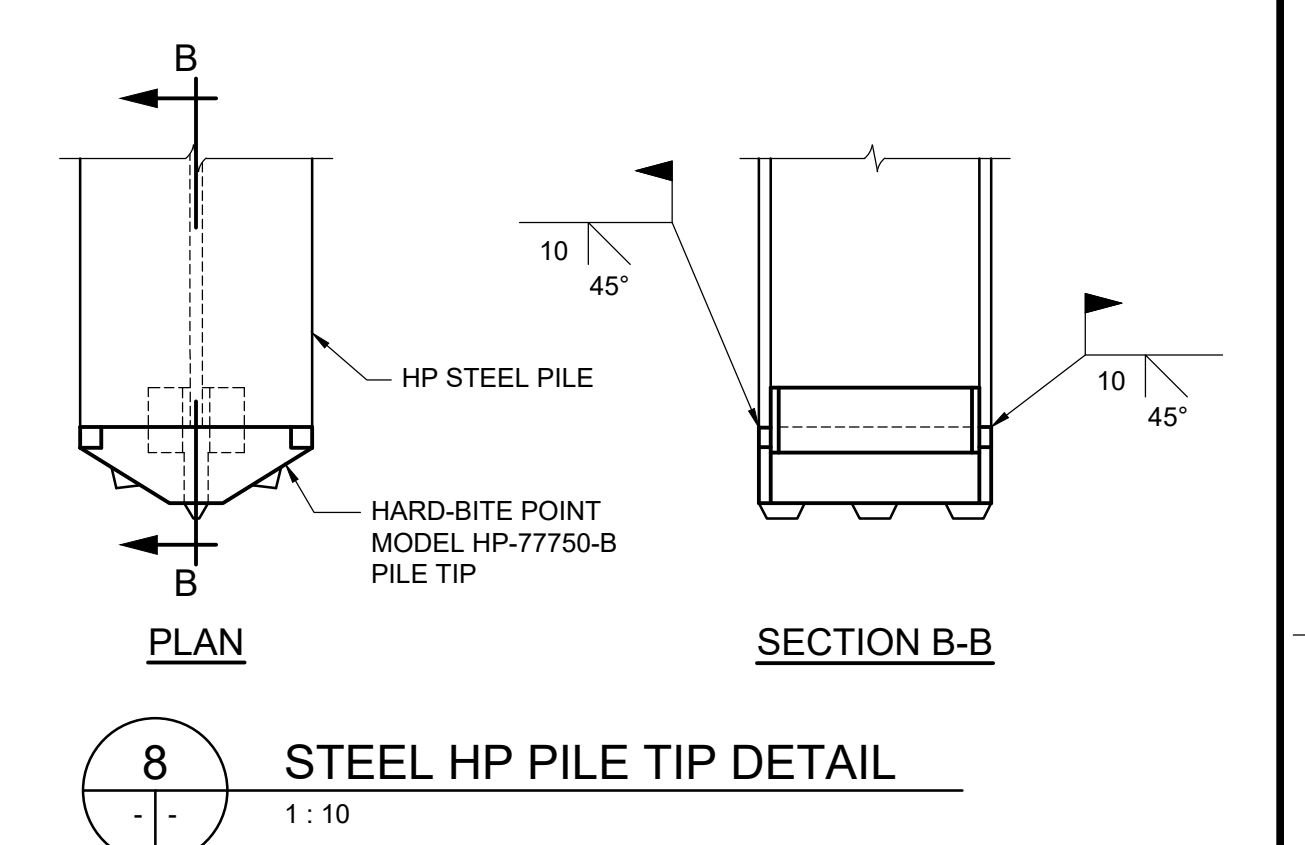


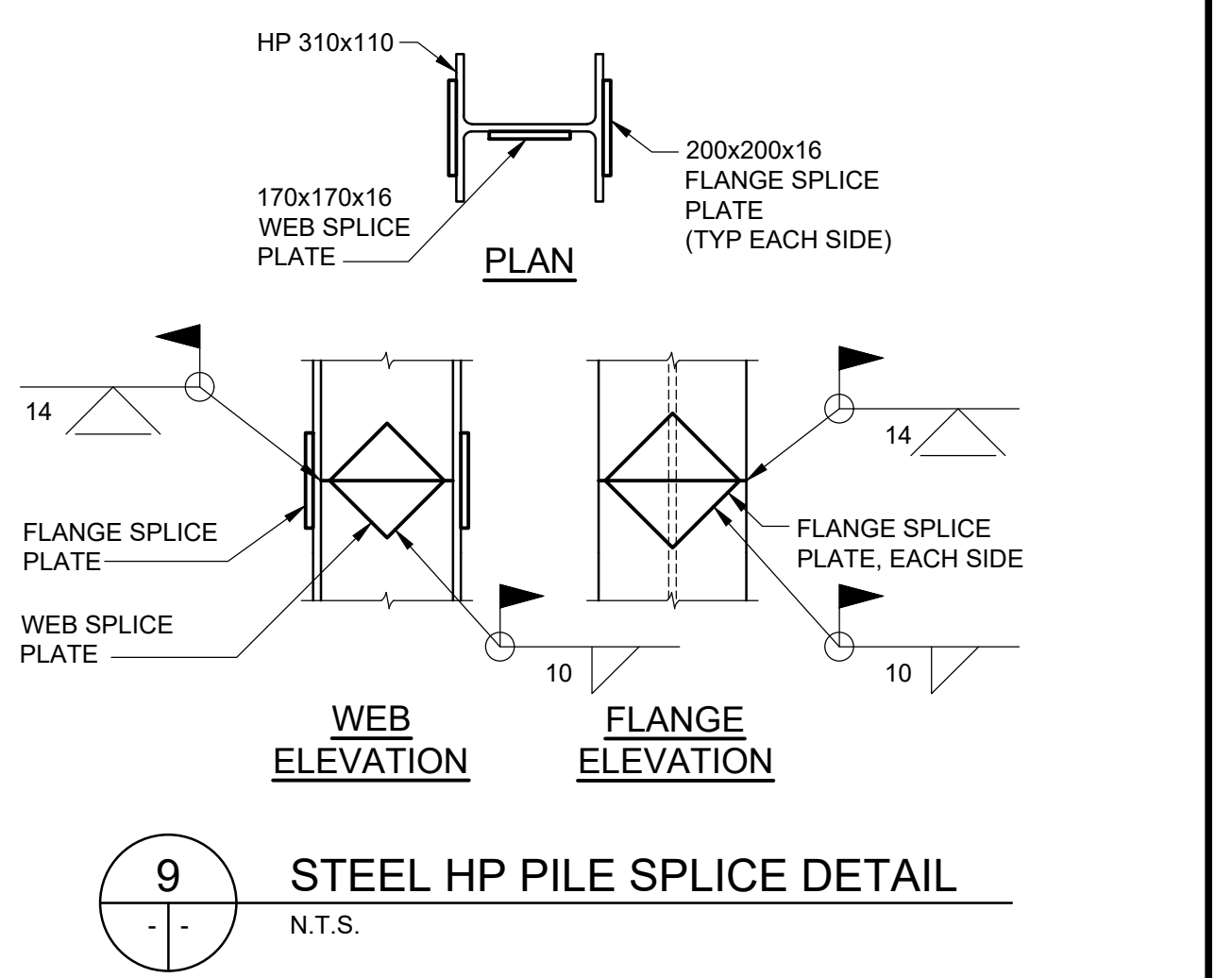
BILL OF PILES				
LOCATION	NO.	DESCRIPTION	ESTIMATED TOTAL LENGTH (m)	ESTIMATED TOTAL LENGTH (m)
SOUTH GRADE BEAM	6	STEEL PILES - HP 310x110	26.50	159.00
	6	HARD-BITE POINT HP-77750 FOR HP 310x110		
TOTAL LENGTH (m) =			159.00	

PILE ELEVATIONS		
PILE MK.	PILE CUT OFF ELEV (m)	ESTIMATED PILE TIP ELEV (m)
NB-S1	240.609	214.500
NB-S2	240.595	214.500
NB-S3	240.573	214.500
NB-S4	240.559	214.500
NB-S5	240.538	214.500
NB-S6	240.523	214.500

- GENERAL NOTES:**
- SPACING OF PILES, FOR ALL FOOTINGS AS SHOWN, IS AT THE BOTTOM OF FOOTINGS.
  - H-PILES ARE TO BE DRIVEN TO PRACTICAL REFUSAL IN BEDROCK AND TO AN APPROXIMATE MINIMUM TIP ELEVATION OF 214.5m.



- WELDING NOTES:**
- LOW HYDROGEN E480 SERIES ELECTRODES SHALL BE USED.
  - THE MINIMUM ROOT PASS SHALL BE 6mm.
  - BEFORE UNDERTAKING THE BACK WELDS, THE WELD PREPARATION SHALL BE CARRIED OUT WITH A CARBON ARC-AIR GOUGER.



B.M. ELEV.			TETRA TECH		CONSULTANT DRAWING NO.	
			DESIGNED BY RL	REVIEWED BY SA	704-INF-MBI03007.01-DWG-S2229	
			DRAWN BY EV	APPROVED BY KA		
			SCALE: AS NOTED		ACCEPTED BY	DATE
					CAM WARD, P.ENG.	25.08.07
0	ISSUED FOR TENDER	25.08.07	SA			
NO.	REVISIONS	DATE	BY	DATE		
				25.08.07		

THE CITY OF WINNIPEG PUBLIC WORKS DEPARTMENT ENGINEERING DIVISION		
LAGIMODIERE TWIN OVERPASSES OVER CPKC KEEWATIN REHABILITATION AND RELATED WORKS		CITY DRAWING NUMBER B123-25-2229
NORTHBOUND STRUCTURE SOUTH APPROACH CONCRETE DETAILS SHEET 2 OF 3		SHEET 29 OF 48
		2229