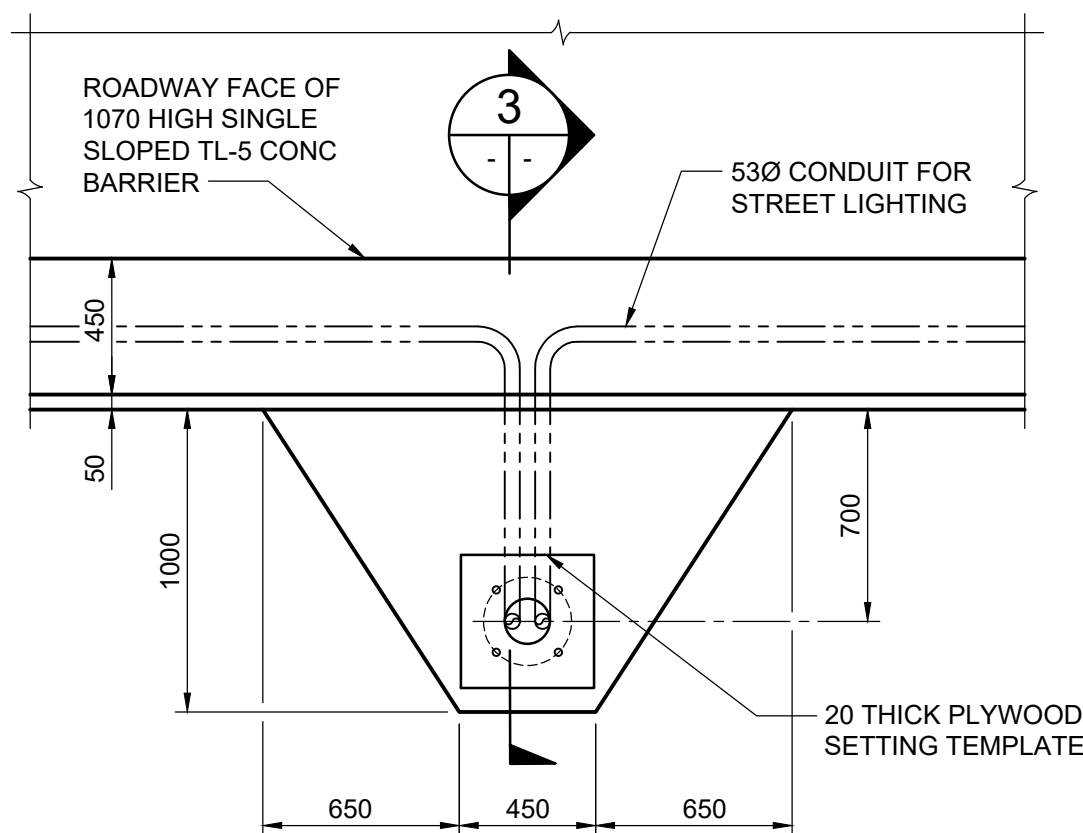
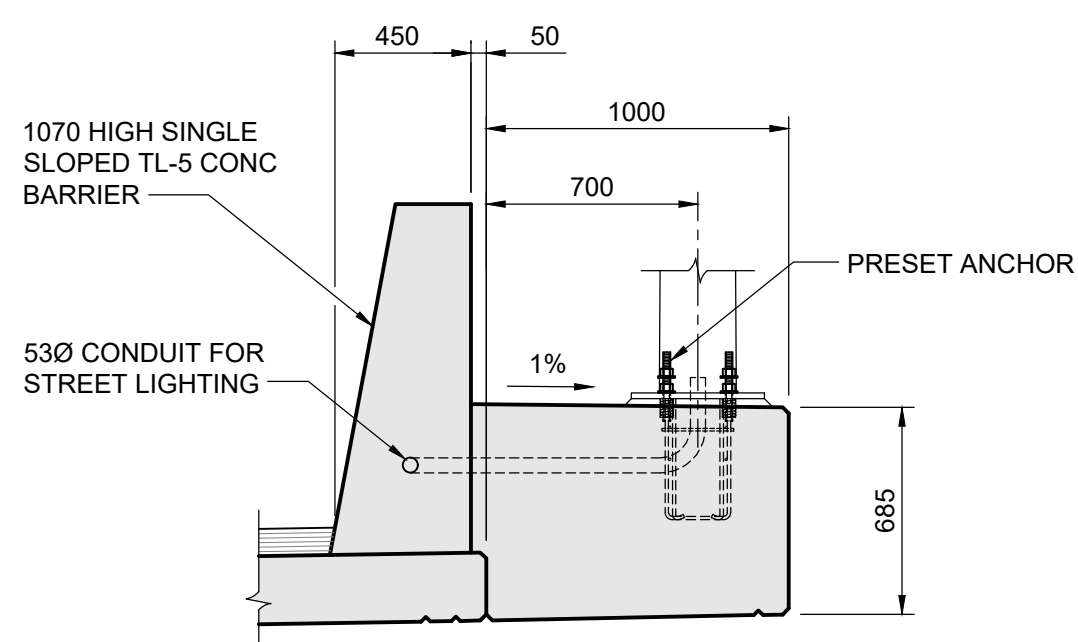


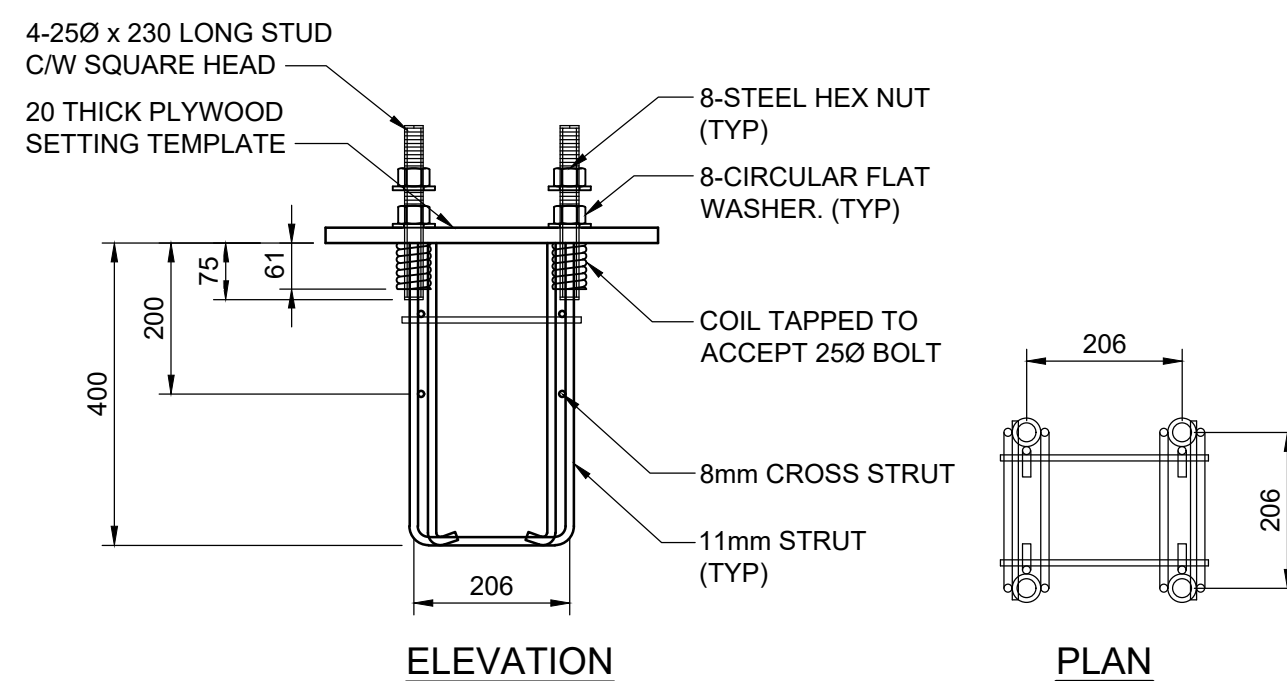
1 CONCRETE BARRIER - FRONT ELEVATION
1 : 100
- WEST CONCRETE BARRIER AS SHOWN
- EAST CONCRETE BARRIER SIMILAR



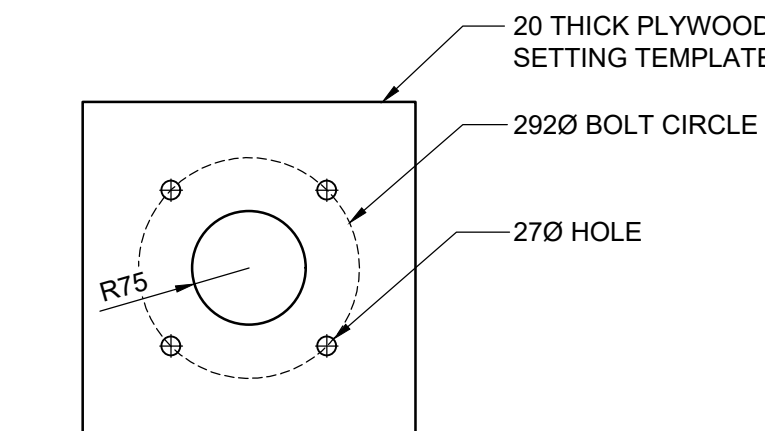
2 STREET LIGHT CONCRETE PEDESTAL DETAIL
1 : 25



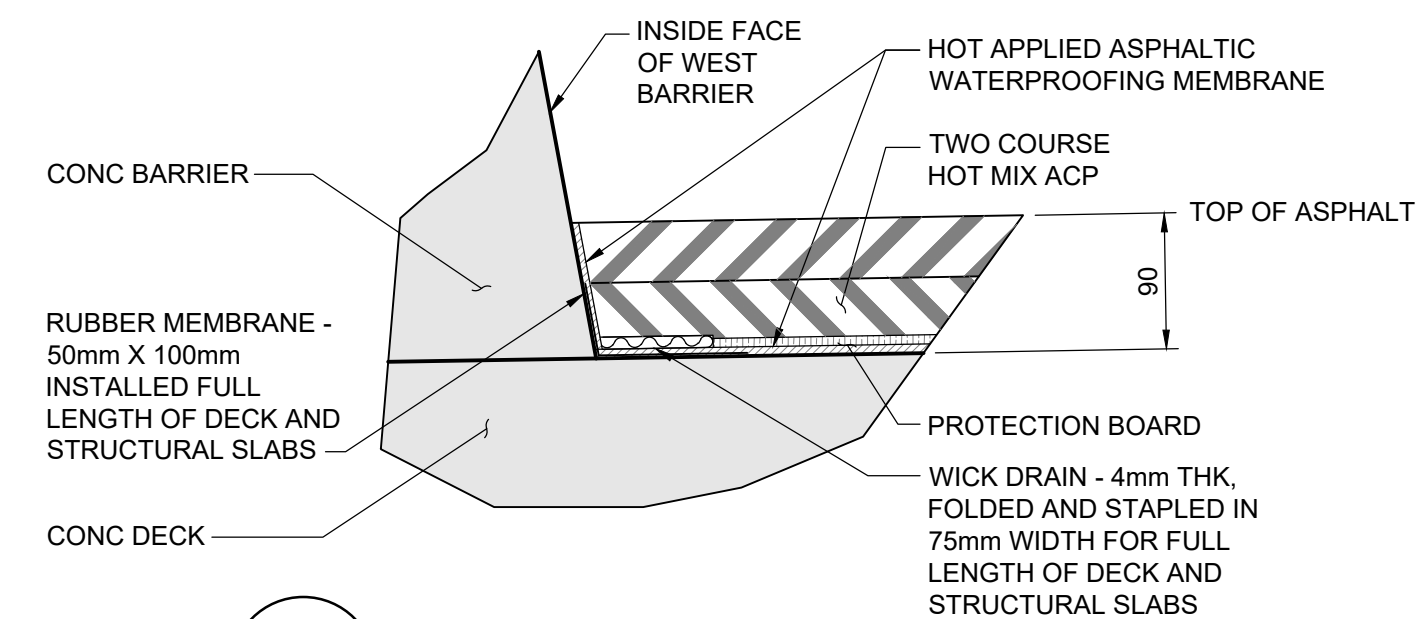
3 SECTION
1 : 25



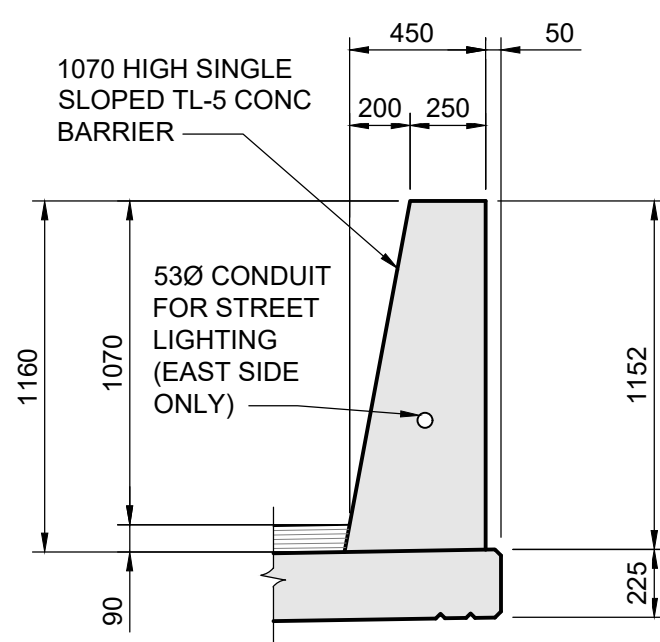
4 PRESET ANCHORAGE DETAIL
1 : 10
ACCOMMODATES A POLE BASE PLATE WITH A THICKNESS UP TO 25mm



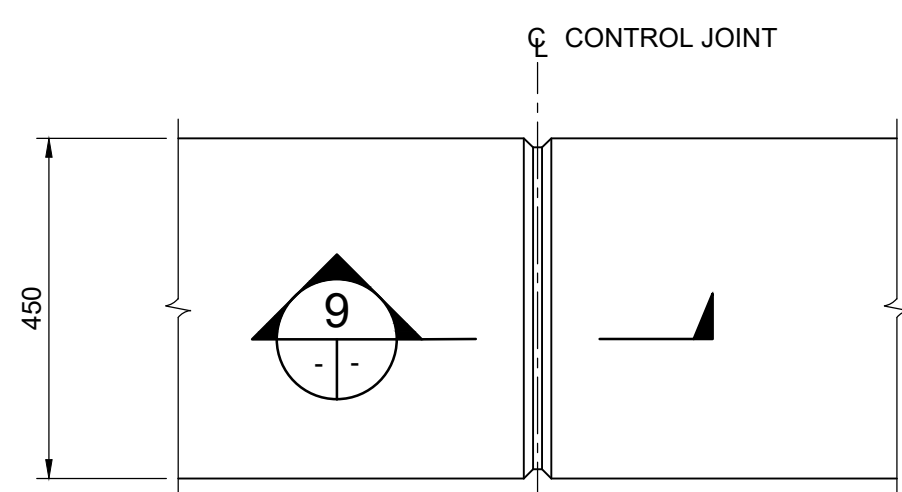
5 PRESET ANCHORAGE TEMPLATE
1 : 10



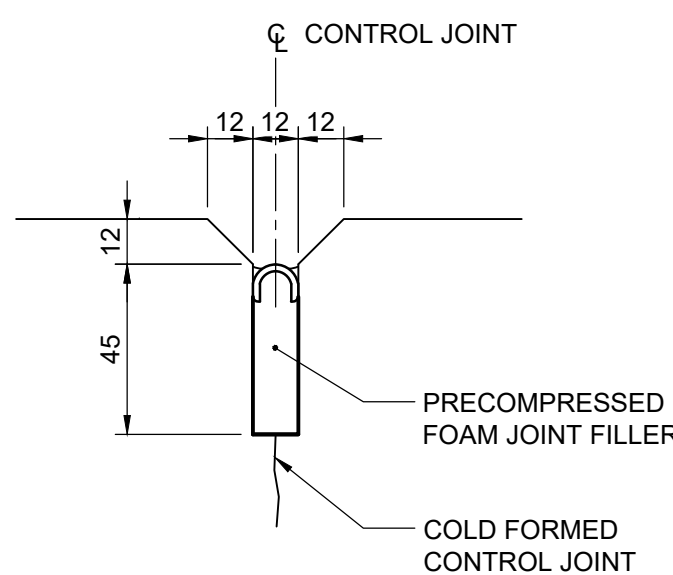
6 WICK DRAIN DETAIL
1 : 5
NOTE:
WICK DRAIN FULL LENGTH OF BRIDGE AND STRUCTURAL SLABS ALONG WEST BARRIER



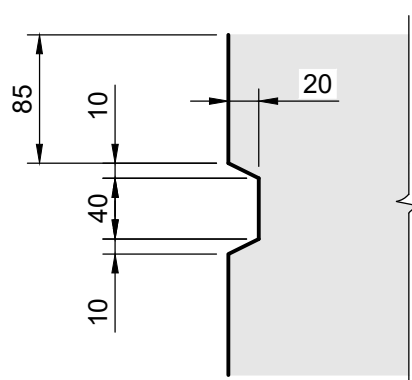
7 BARRIER SECTION
1 : 25



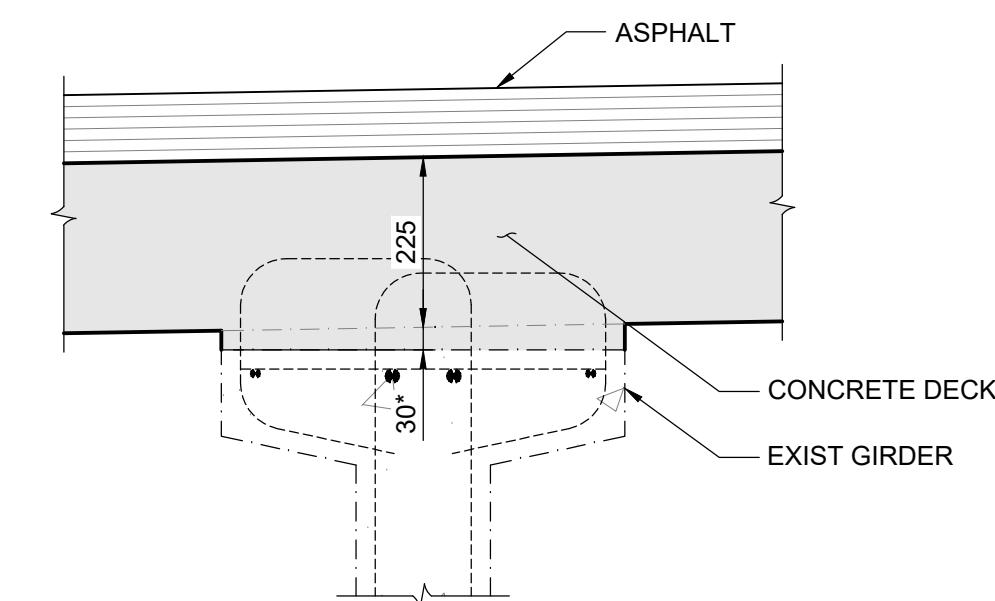
8 BARRIER CONTROL JOINT DETAIL
1 : 10



9 SECTION
1 : 2



10 DECK POUR JOINT DETAIL
1 : 5



11 GIRDER HAUNCH DETAIL
1 : 10
NOTE: GIRDER HAUNCHES 30mm NOMINAL. ACTUAL GIRDER CAMBER AND DEFLECTION DUE TO DEAD LOADS MAY VARY FROM DESIGN. ACTUAL HAUNCH HEIGHTS WILL BE PROVIDED BY THE ENGINEER FOLLOWING GIRDER SURVEY.



B.M. ELEV.				TETRA TECH				THE CITY OF WINNIPEG PUBLIC WORKS DEPARTMENT ENGINEERING DIVISION	
				DESIGNED BY TN	REVIEWED BY SA			LAGIMODIERE TWIN OVERPASSES OVER CPKC KEEWATIN REHABILITATION AND RELATED WORKS	
				DRAWN BY EV/GI	APPROVED BY KA			NORTHBOUND STRUCTURE DECK CONCRETE DETAILS	
				SCALE: AS NOTED	ACCEPTED BY DATE CAM WARD, P.ENG. 25.08.07			CITY DRAWING NUMBER B123-25-2222	
0	ISSUED FOR TENDER	25.08.07	TN					SHEET 22 OF 48	
NO. REVISIONS				DATE	BY	DATE	25.08.07	CONSULTANT DRAWING NO. 704-INF-MBI03007.01-DWG-S2222	
								2222	