

1 PLAN - ABUTMENT N-0  
1 : 50

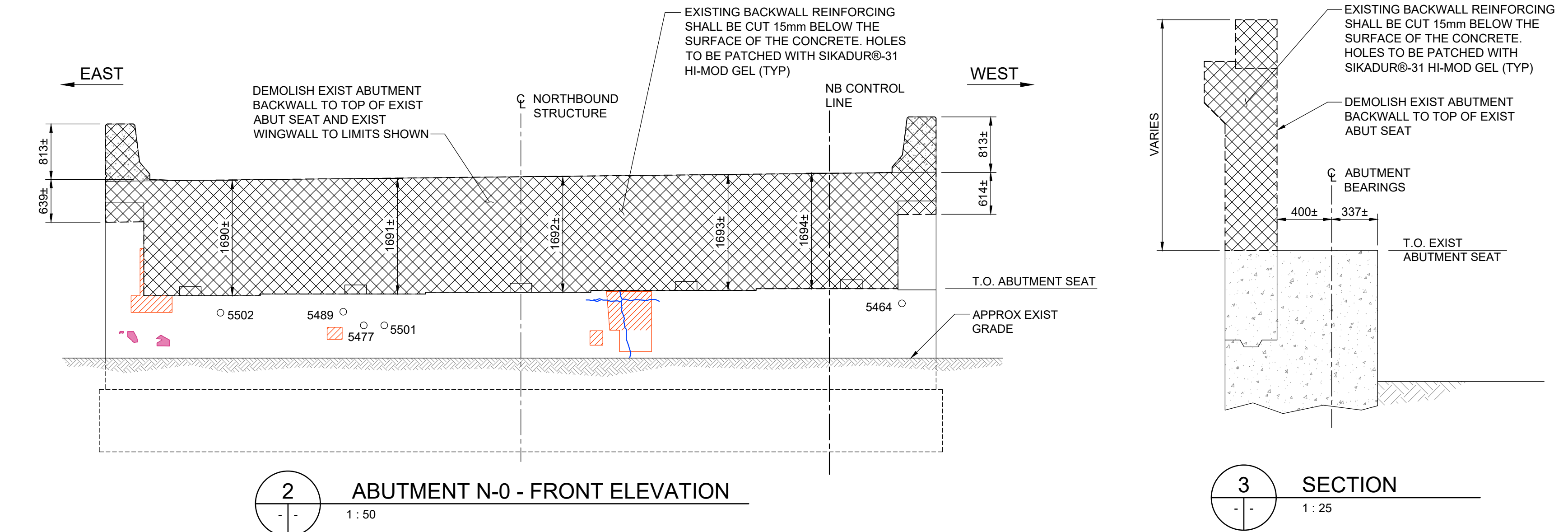
LEGEND

- CRACK
- DELAMINATION
- SPALL
- CORE
- ABANDONED CORE (HIT REINFORCING STEEL)

NOTES:

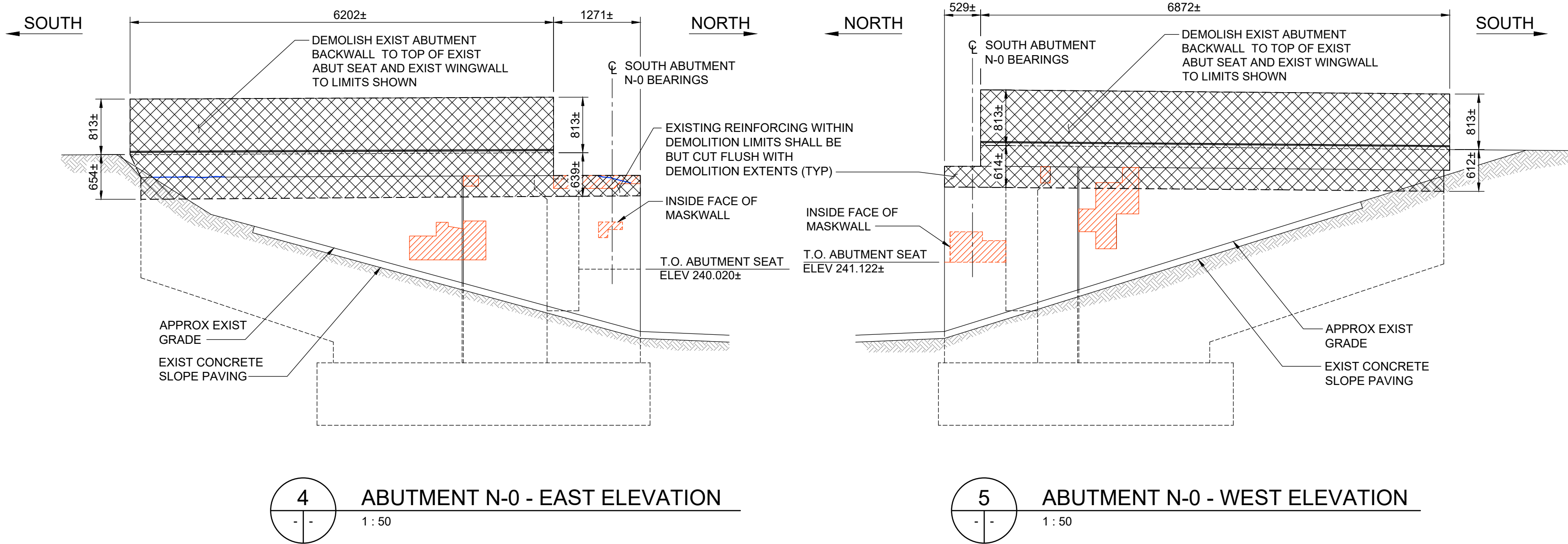
- CRACK LOCATIONS ARE APPROXIMATE. CRACK WIDTH VARIED
- THIS DRAWING DEPICTS SELECT FINDINGS/AREAS OF CONCERN. ACTUAL REPAIR AREAS MAY BE DIFFERENT AND WILL BE IDENTIFIED ON SITE BY THE CONTRACT ADMINISTRATOR. REPAIR AREAS TO BE MARKED OFF TO SQUARE OR RECTANGULAR SHAPES.
- ASSUMED REPAIR AREAS ARE PROVIDED IN TABLE 1.
- REFER TO SHEET 1004 FOR TYPICAL REPAIR NOTES.

TABLE 1: REPAIR QUANTITIES	
	APPROX REPAIR UNITS
N0	6.0 m <sup>2</sup>



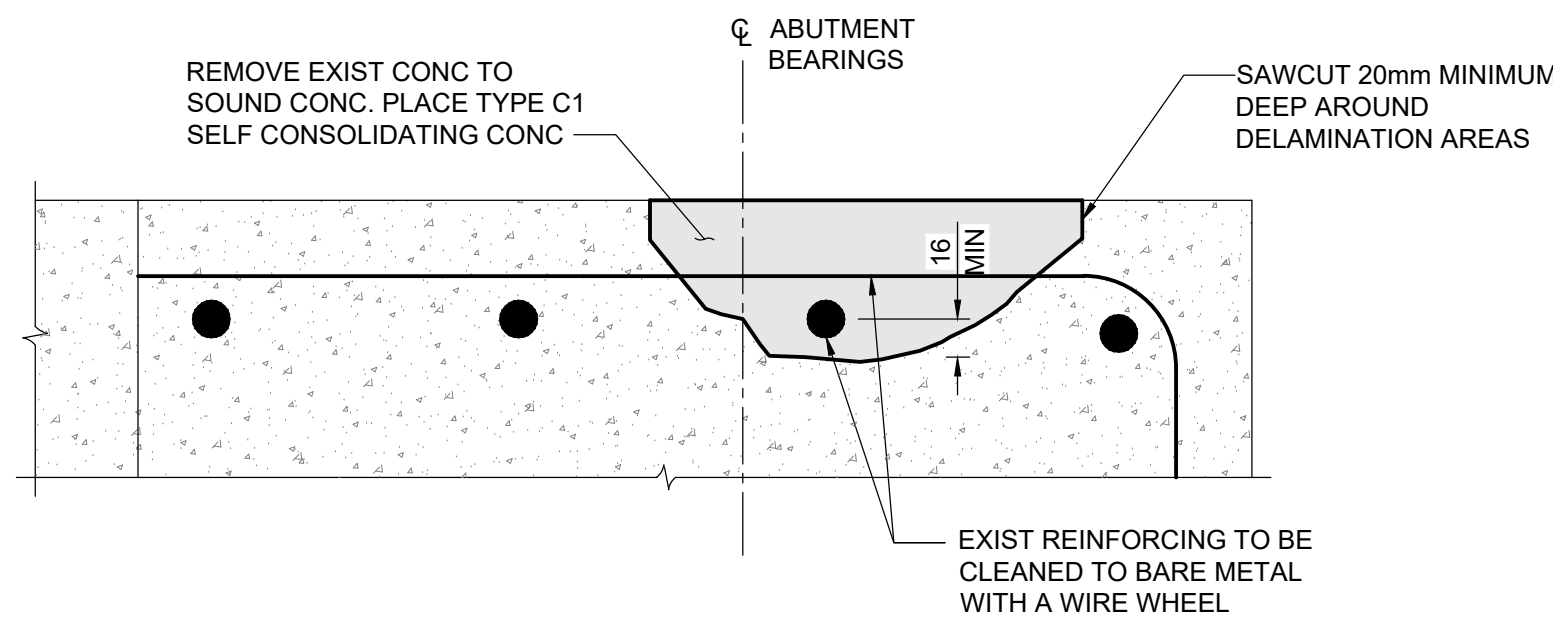
2 ABUTMENT N-0 - FRONT ELEVATION  
1 : 50

3 SECTION  
1 : 25





4 ABUTMENT N-0 - EAST ELEVATION  
1 : 50

5 ABUTMENT N-0 - WEST ELEVATION  
1 : 50



6 DELAMINATION REPAIR  
1 : 5



B.M. ELEV.				<div>TETRA TECH</div>				<div>THE CITY OF WINNIPEG PUBLIC WORKS DEPARTMENT ENGINEERING DIVISION</div>																																																																																																																																																																																																																																																																																																																																																																																																																																																																																																																																																																																																																																																																																																																																																																																																																																																																																																																																																																																																																																																																																																																																																																																																																																																																																																																																														