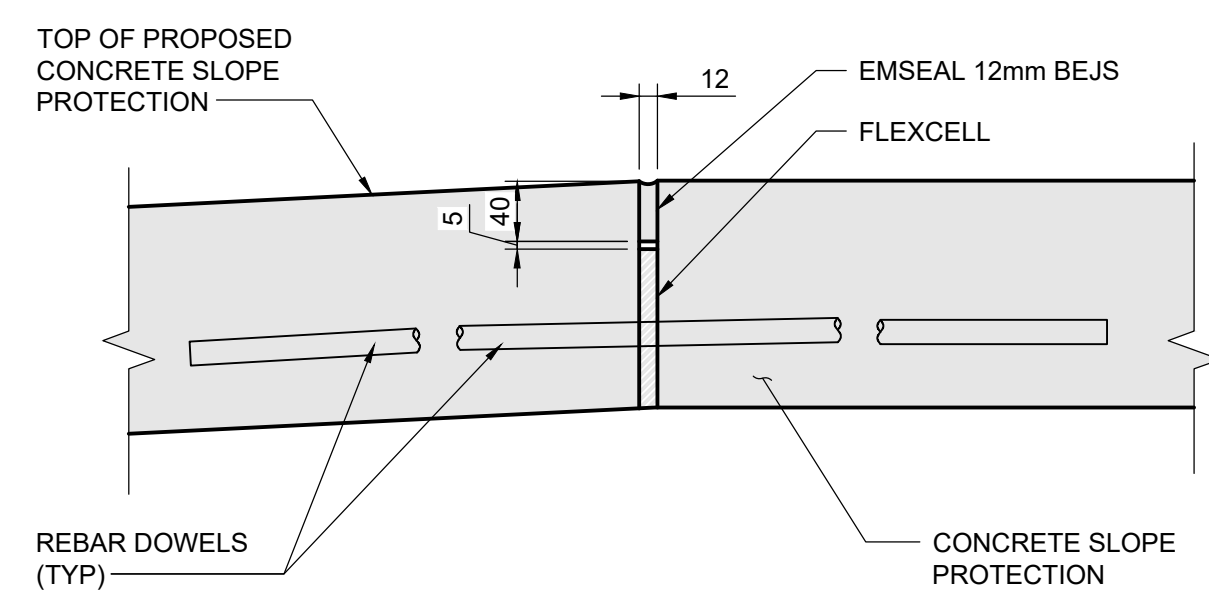
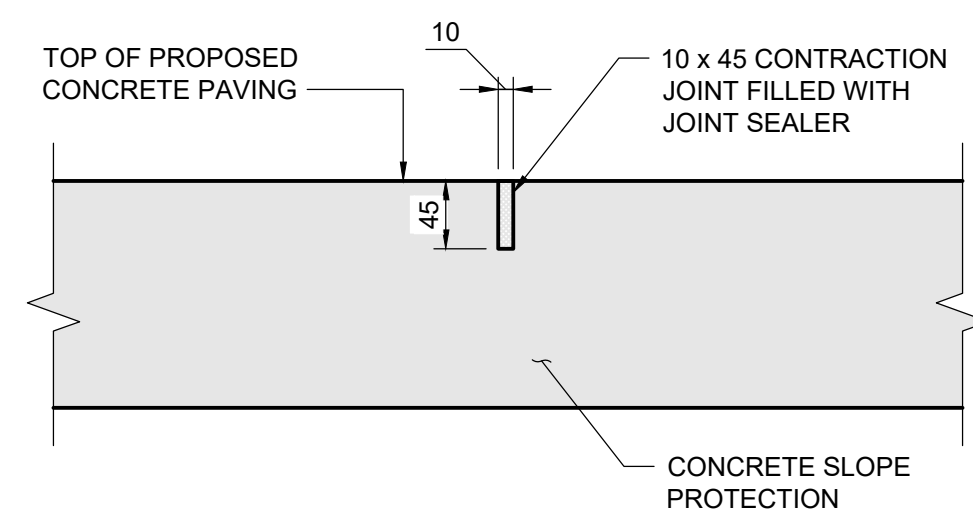


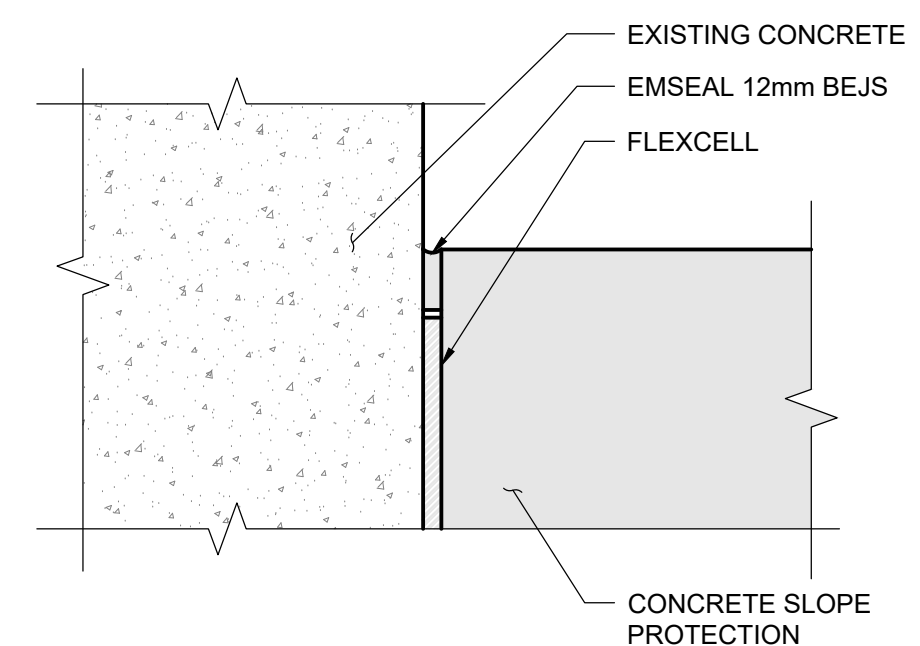
1 SECTION - CONCRETE SLOPE PROTECTION
2142 2143 1:25



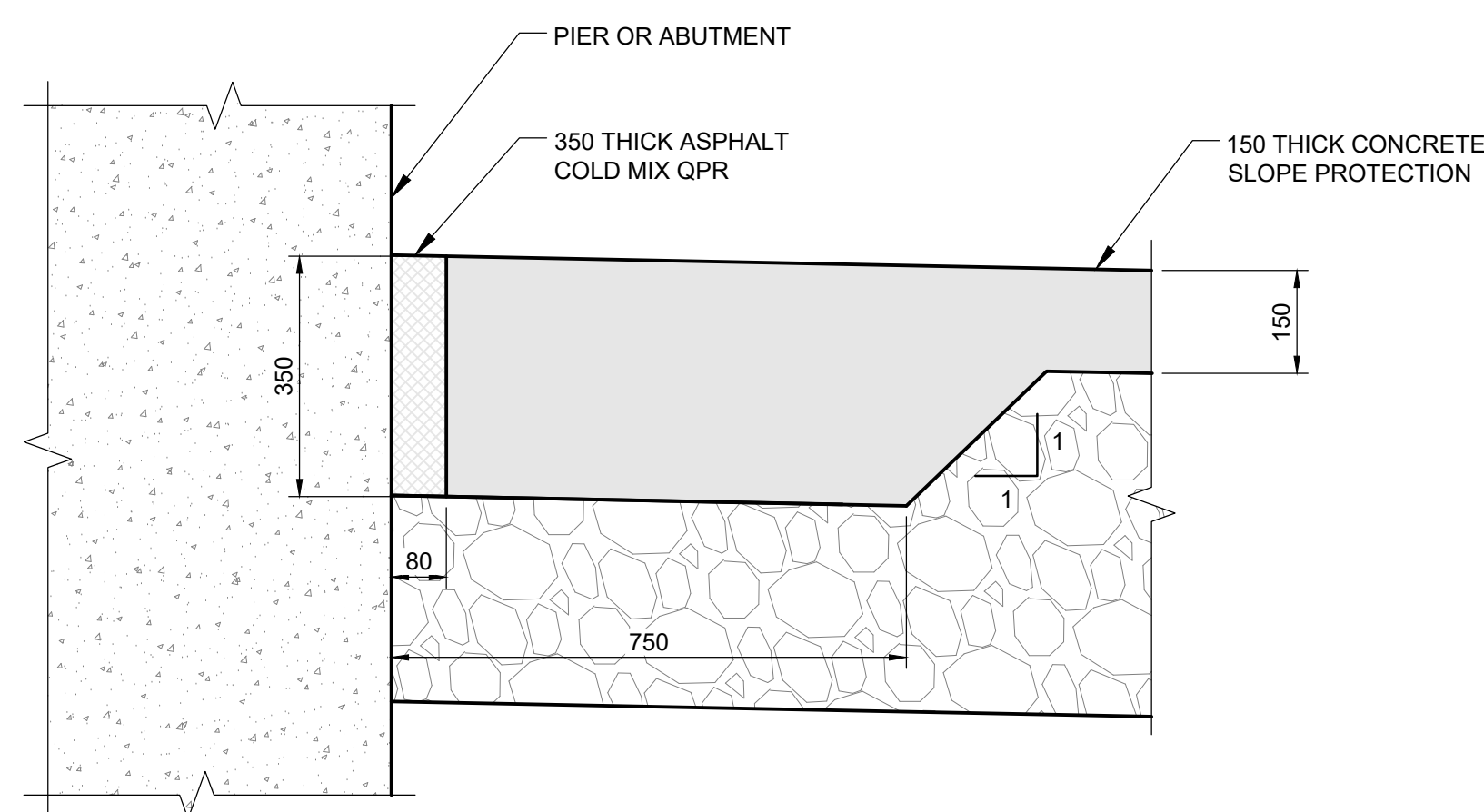
2 DETAIL - CONSTRUCTION JOINT TYPE "J1"
1:5



3 DETAIL - CONSTRUCTION JOINT TYPE "J2"
1:5



4 DETAIL - ALTERNATIVE CONSTRUCTION JOINT
1:5



5 DETAIL - CONSTRUCTION JOINT
1:10

**ENGINEERS
GEOSCIENTISTS
MANITOBA**
Certificate of Authorization
Tetra Tech Canada Inc.
No. 6499

B.M. ELEV.								THE CITY OF WINNIPEG PUBLIC WORKS DEPARTMENT ENGINEERING DIVISION		CITY DRAWING NUMBER B123-25-2143 SHEET 43 OF 47 2143	
				DESIGNED BY	RL	REVIEWED BY	SA	CONSULTANT DRAWING NO. 704-INF-MBI03007.01-DWG-S2143		LAGIMODIERE TWIN OVERPASSES OVER CPKC KEEWATIN REHABILITATION AND RELATED WORKS SOUTHBOUND STRUCTURE SOUTH ABUTMENT SLOPE PROTECTION CONCRETE DETAILS	
				DRAWN BY	EV	APPROVED BY	KA				
				SCALE:	AS NOTED	ACCEPTED BY	DATE				
						CAM WARD, P.ENG.	25.08.07				
0	ISSUED FOR TENDER	25.08.07	SA								
NO.	REVISIONS	DATE	BY	DATE	25.08.07						