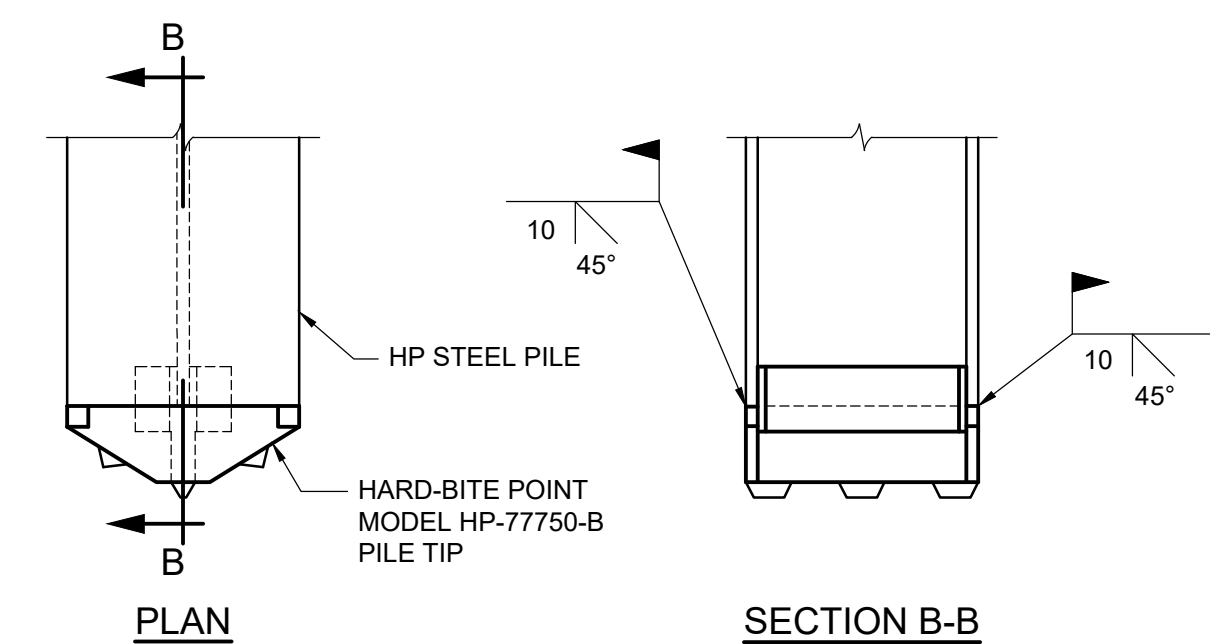


PILE ELEVATIONS		
PILE Mk.	PILE CUT OFF ELEV (m)	ESTIMATED PILE TIP ELEV (m)
SB-N1	239.994	214.500
SB-N2	240.001	214.500
SB-N3	240.010	214.500
SB-N4	240.015	214.500
SB-N5	240.025	214.500
SB-N6	240.031	214.500

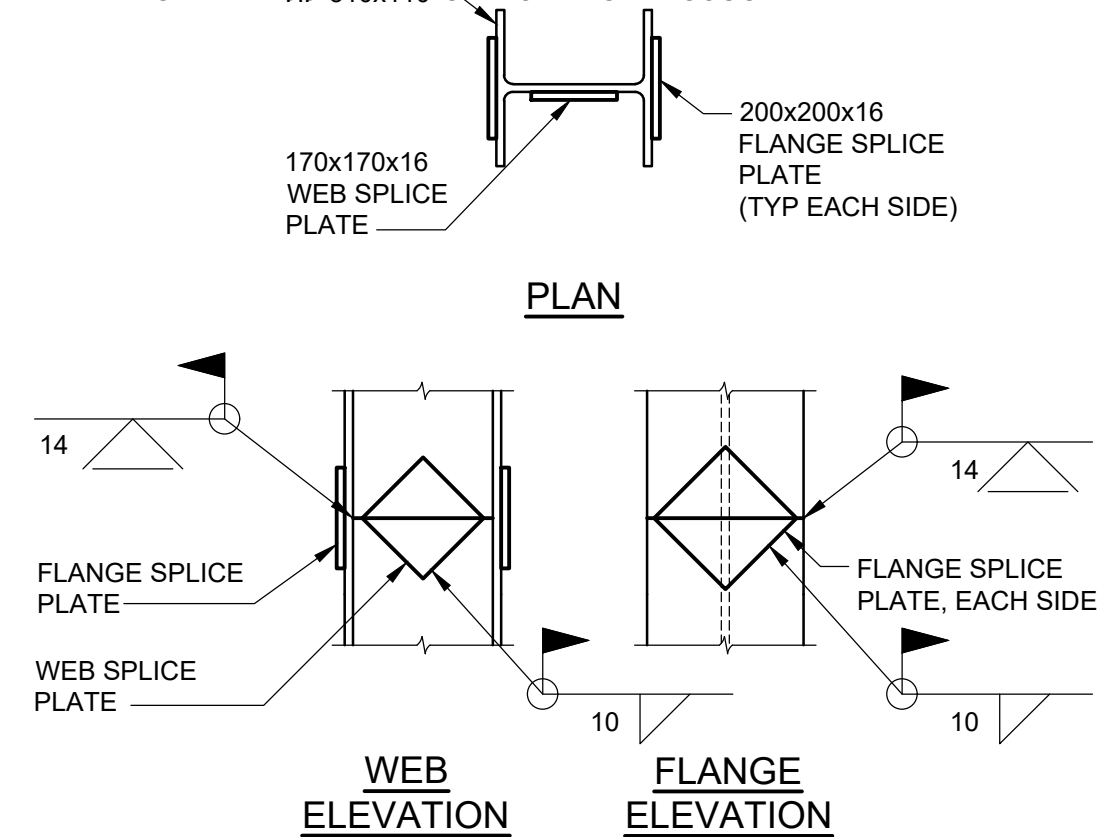
GENERAL NOTES:


1. SPACING OF PILES, FOR ALL FOOTINGS AS SHOWN, IS AT THE BOTTOM OF FOOTINGS.
2. H-PILES ARE TO BE DRIVEN TO PRACTICAL REFUSAL IN BEDROCK AND TO AN APPROXIMATE MINIMUM TIP ELEVATION OF 214.5m.



WELDING NOTES:

1. LOW HYDROGEN E480 SERIES ELECTRODES SHALL BE USED.
2. THE MINIMUM ROOT PASS SHALL BE 6mm.
3. BEFORE UNDERTAKING THE BACK WELDS, THE WELD PREPARATION SHALL BE CARRIED OUT WITH A CARBON ARC-AIR GOUGER.



8.M. ELEV.				<div>TETRA TECH</div>				CONSULTANT DRAWING NO.  704-INF.MB103007.01-DWG-S2136			
				DESIGNED BY	RL	REVIEWED BY	SA				
				DRAWN BY	EV	APPROVED BY	KA				
				SCALE: AS NOTED		ACCEPTED BY DATE					
0	ISSUED FOR TENDER		25.08.07	SA	CAM WARD, P.ENG. 25.08.07						
NO.	REVISIONS		DATE	BY	DATE	25.08.07					

