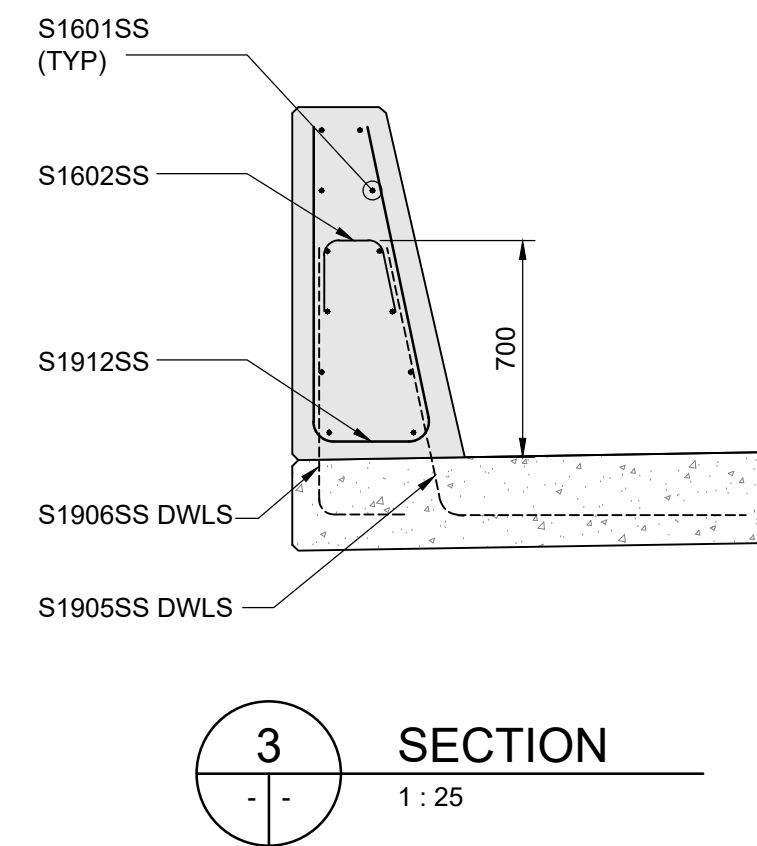
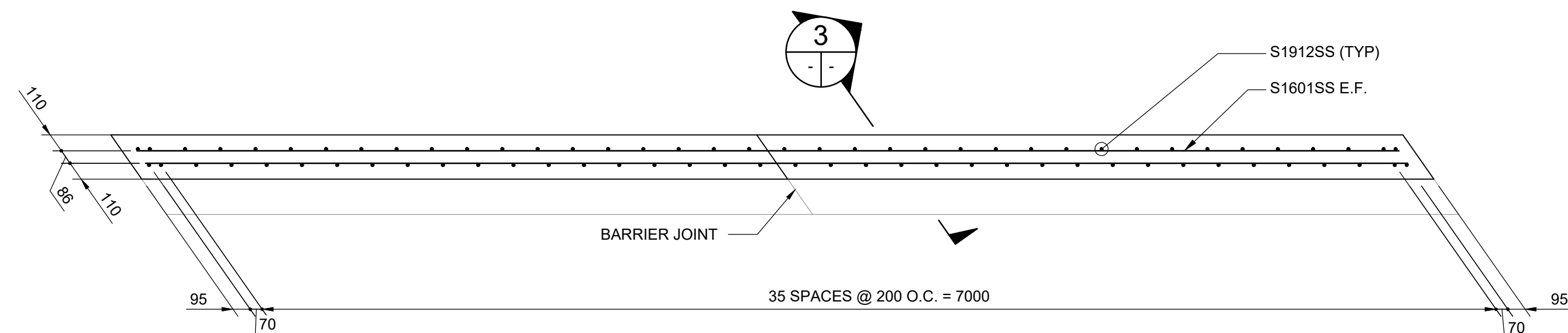


1
- -
SOUTH APPROACH BARRIER ELEVATION - REINFORCING
1 : 25
- WEST TRAFFIC BARRIER AS SHOWN, EAST TRAFFIC BARRIER SIMILAR



3
- -
SECTION
1 : 25



2
- -
SECTION
1 : 25



B.M. ELEV.				TETRA TECH				THE CITY OF WINNIPEG PUBLIC WORKS DEPARTMENT ENGINEERING DIVISION	
				DESIGNED BY RL	REVIEWED BY SA			LAGIMODIERE TWIN OVERPASSES OVER CPKC KEEWATIN REHABILITATION AND RELATED WORKS	
				DRAWN BY AM	APPROVED BY KA			CITY DRAWING NUMBER B123-25-2134	
				SCALE: AS NOTED	ACCEPTED BY CAM WARD, P.ENG. DATE 25.08.07			SOUTHBOUND STRUCTURE SOUTH APPROACH - APPROACH SLAB BARRIER REINFORCING DETAILS	
0	ISSUED FOR TENDER	25.08.07	SA			CONSULTANT DRAWING NO. 704-INF.MBI03007.01-DWG-S2134		SHEET 34 OF 47	
NO.	REVISIONS	DATE	BY	DATE	25.08.07			2134	