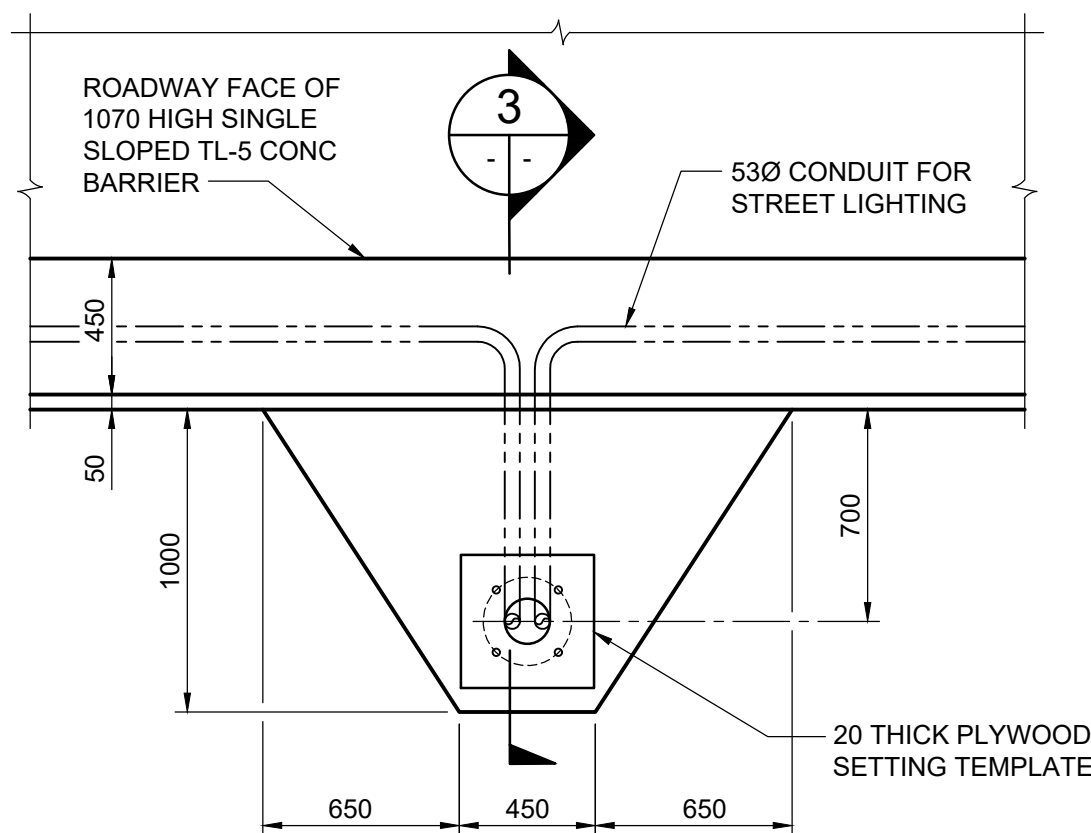
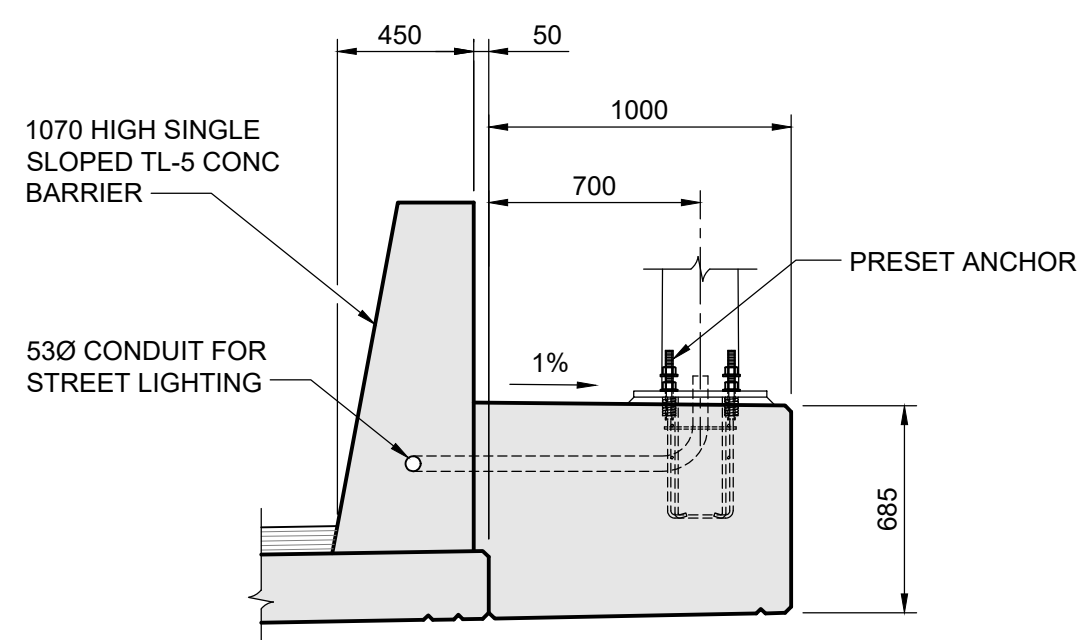


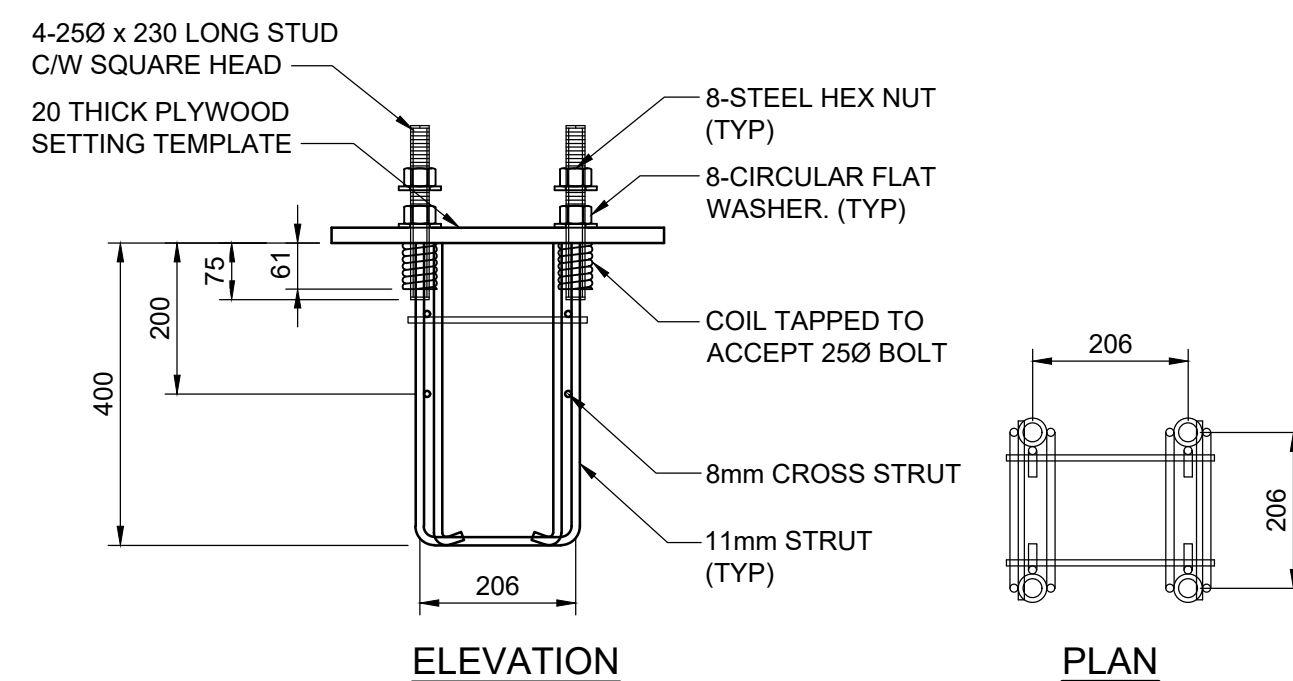
**1 CONCRETE BARRIER - FRONT ELEVATION**  
1 : 100  
- WEST CONCRETE BARRIER AS SHOWN  
- EAST CONCRETE BARRIER SIMILAR



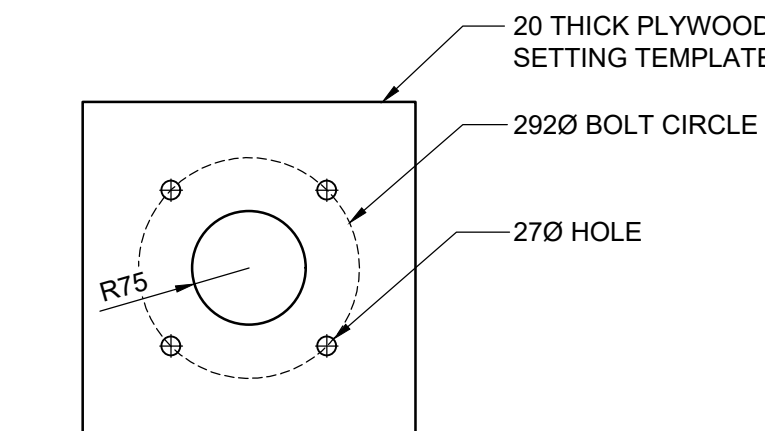
**2 STREET LIGHT CONCRETE PEDESTAL DETAIL**  
1 : 25



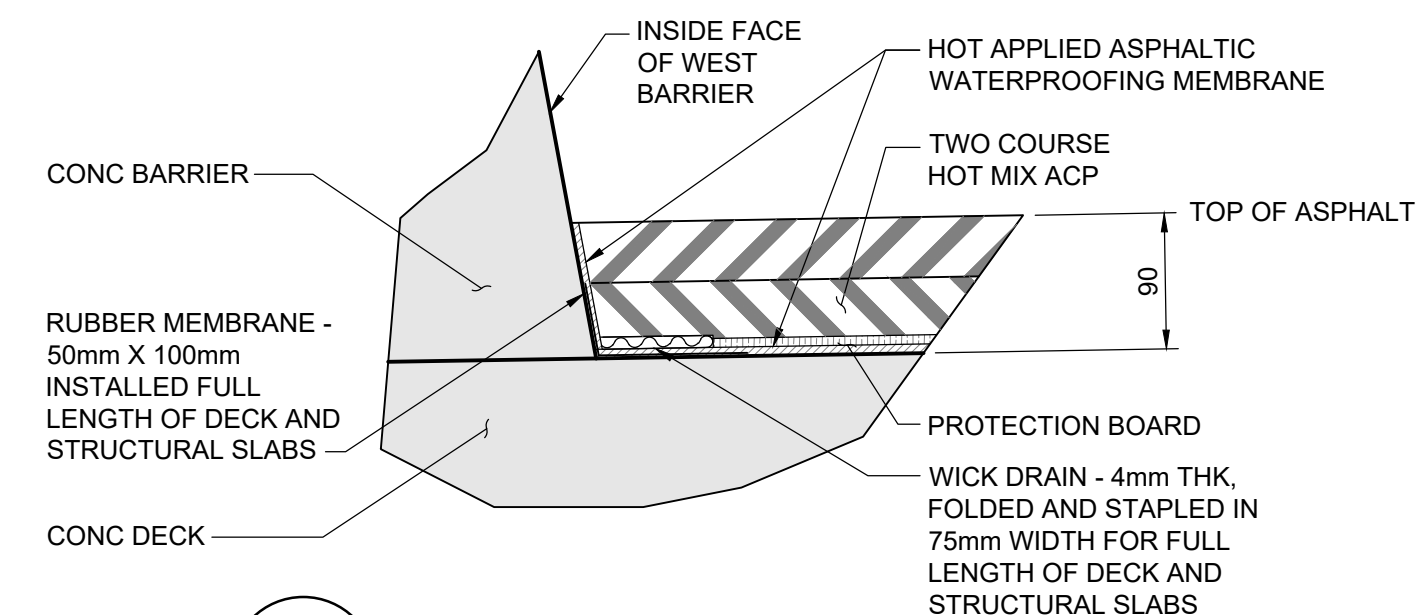
**3 SECTION**  
1 : 25



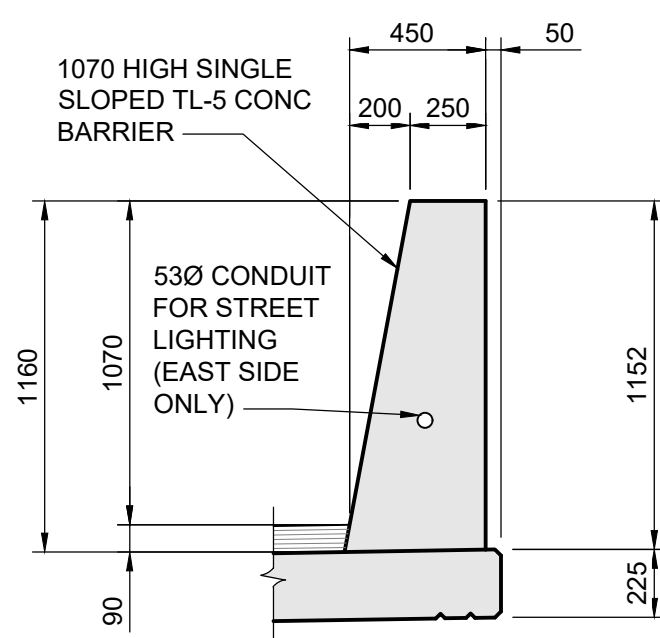
**4 PRESET ANCHORAGE DETAIL**  
1 : 10  
ACCOMMODATES A POLE BASE PLATE WITH A THICKNESS UP TO 25mm



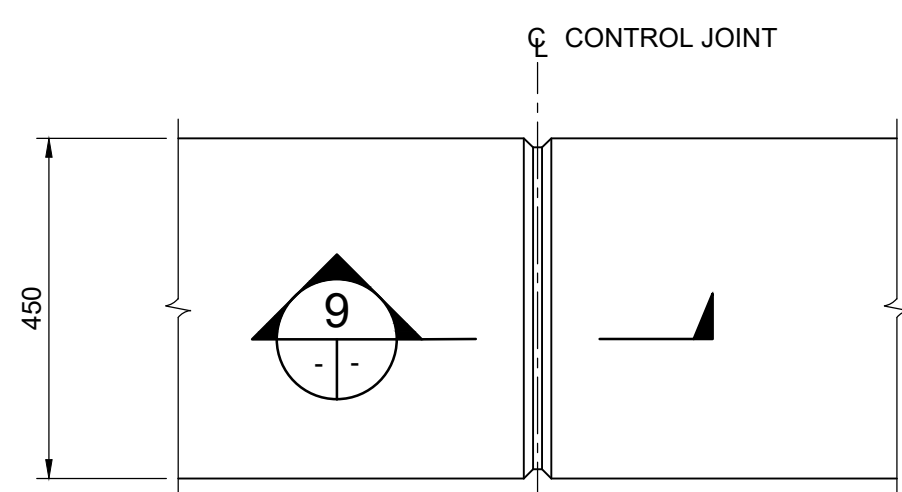
**5 PRESET ANCHORAGE TEMPLATE**  
1 : 10



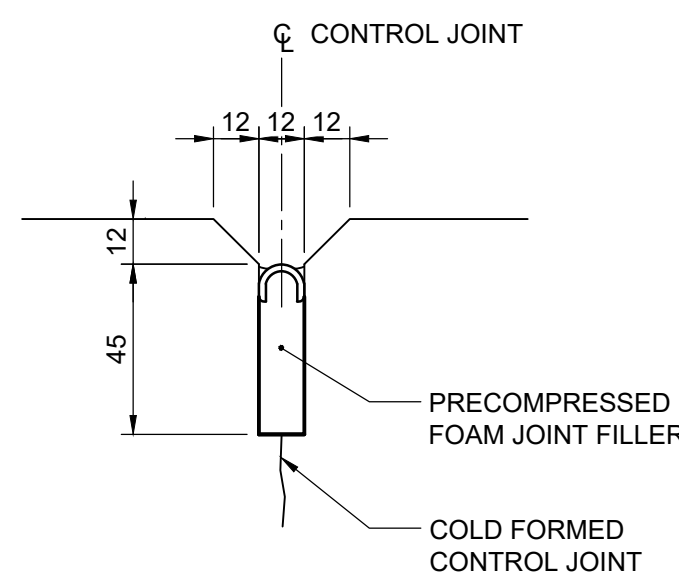
**6 WICK DRAIN DETAIL**  
1 : 5  
NOTE:  
WICK DRAIN FULL LENGTH OF BRIDGE AND STRUCTURAL SLABS ALONG WEST BARRIER



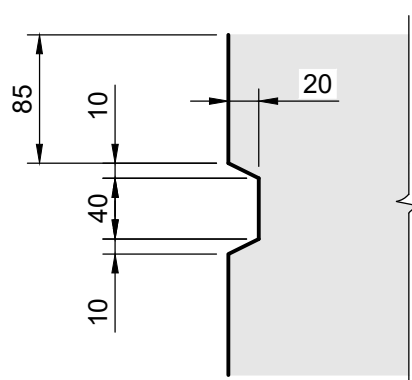
**7 BARRIER SECTION**  
1 : 25



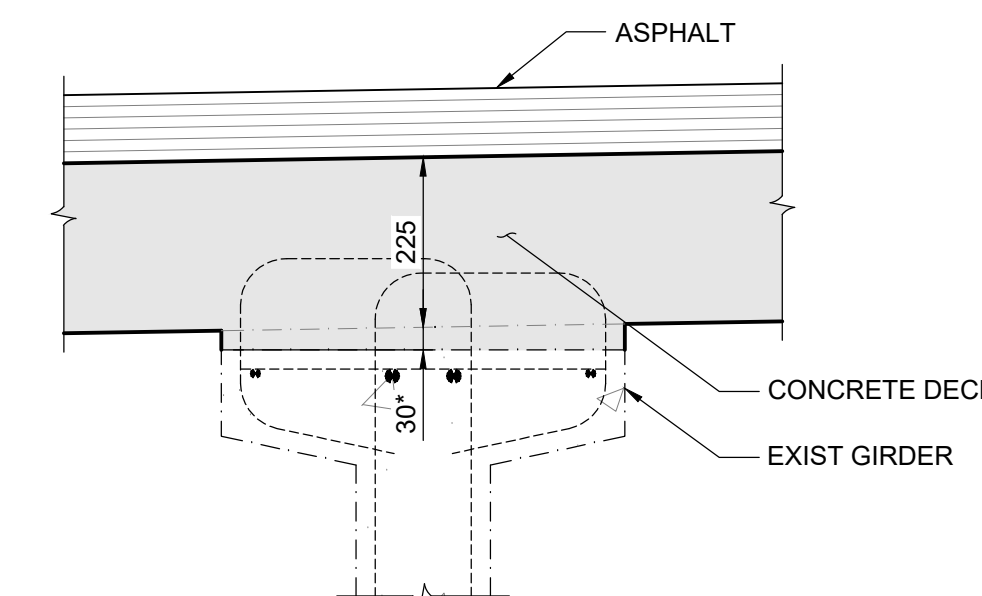
**8 BARRIER CONTROL JOINT DETAIL**  
1 : 10



**9 SECTION**  
1 : 2



**10 DECK POUR JOINT DETAIL**  
1 : 5



**11 GIRDER HAUNCH DETAIL**  
1 : 10  
NOTE: GIRDER HAUNCHES 30mm NOMINAL. ACTUAL GIRDER CAMBER AND DEFLECTION DUE TO DEAD LOADS MAY VARY FROM DESIGN. ACTUAL HAUNCH HEIGHTS WILL BE PROVIDED BY THE ENGINEER FOLLOWING GIRDER SURVEY.



B.M. ELEV.				<b>TETRA TECH</b>				<b>THE CITY OF WINNIPEG</b> PUBLIC WORKS DEPARTMENT ENGINEERING DIVISION	
				DESIGNED BY RL	REVIEWED BY SA			LAGIMODIERE TWIN OVERPASSES OVER CPKC KEEWATIN REHABILITATION AND RELATED WORKS	
				DRAWN BY EV/GI	APPROVED BY KA			CITY DRAWING NUMBER B123-25-2122	
				SCALE: AS NOTED	ACCEPTED BY CAM WARD, P.ENG. 25.08.07			SOUTHBOUND STRUCTURE DECK CONCRETE DETAILS	
0	ISSUED FOR TENDER	25.08.07	TN					SHEET 22 OF 47	
NO.	REVISIONS	DATE	BY	DATE	25.08.07			2122	