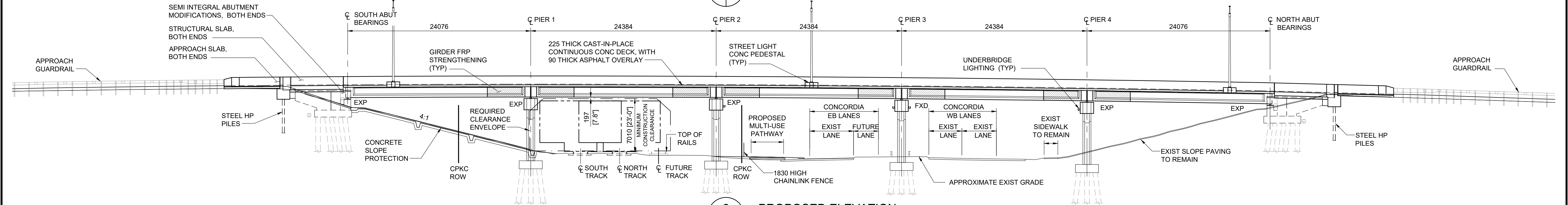
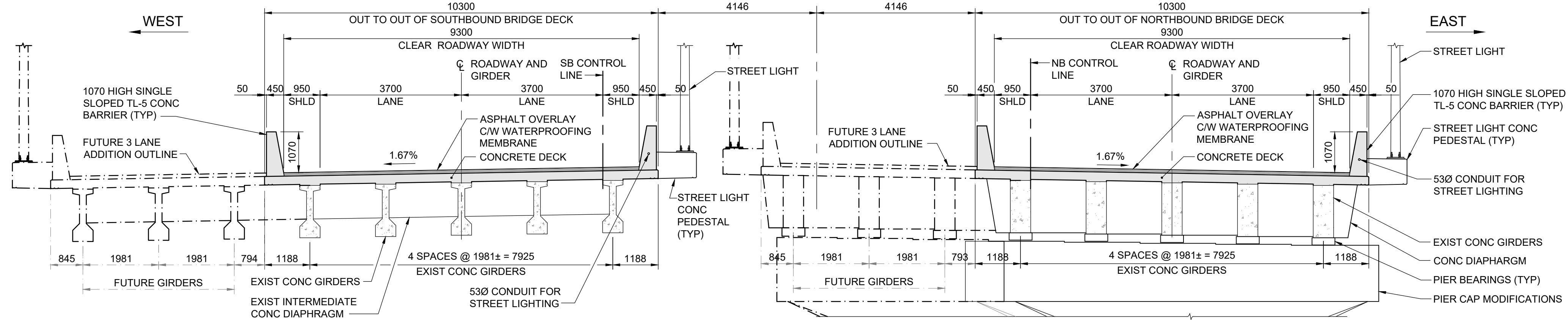


1 PROPOSED PLAN  
1 : 400



2 PROPOSED ELEVATION  
1 : 250



TYPICAL CROSS SECTION

CROSS SECTION AT PIER

3 PROPOSED CROSS SECTION  
1 : 75

WORKING POINTS (W.P.) UTM COORDINATES				
Mk. No.	NORTHING	EASTING	ELEVATION	STATION
WP1	5530470.885	639518.998	242.053	31+218.087
WP2	5530493.573	639527.056	242.189	31+242.163
WP3	5530516.551	639535.216	242.212	31+266.547
WP4	5530539.590	639543.376	242.12	31+290.931
WP5	5530562.507	639551.539	241.906	31+315.315
WP6	5530585.195	639559.594	241.571	31+339.391
WP7	5530474.552	639532.207	242.089	21+227.612
WP8	5530497.240	639540.265	242.204	21+251.688
WP9	5530520.218	639548.425	242.179	21+276.072
WP10	5530543.196	639556.585	242.04	21+300.456
WP11	5530566.174	639564.746	241.782	21+324.84
WP12	5530588.861	639572.803	241.417	21+348.916



B.M. ELEV.		DESIGNED BY RL		REVIEWED BY SA	
		DRAWN BY EV		APPROVED BY KA	
		SCALE: AS NOTED		ACCEPTED BY CAM WARD, P.ENG. 25.08.07	
0 ISSUED FOR TENDER		25.08.07		DATE	
NO. REVISIONS		DATE		BY	

THE CITY OF WINNIPEG PUBLIC WORKS DEPARTMENT ENGINEERING DIVISION		CITY DRAWING NUMBER B123-25-1007	
LAGIMODIERE TWIN OVERPASSES OVER CPKC KEEWATIN REHABILITATION AND RELATED WORKS		SHEET 7 OF 31	
BRIDGE REHABILITATION - PROPOSED GENERAL ARRANGEMENT		1007	