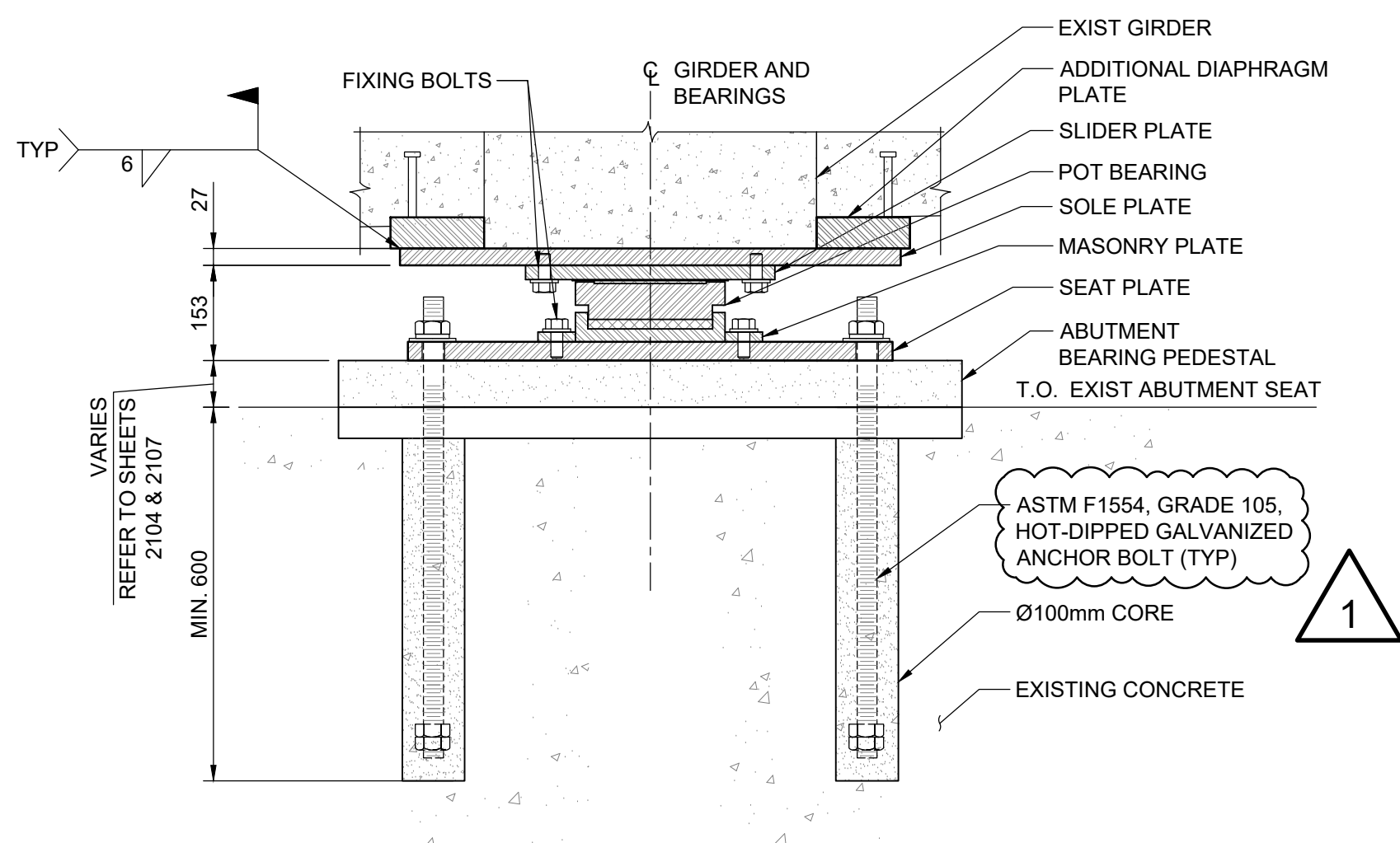
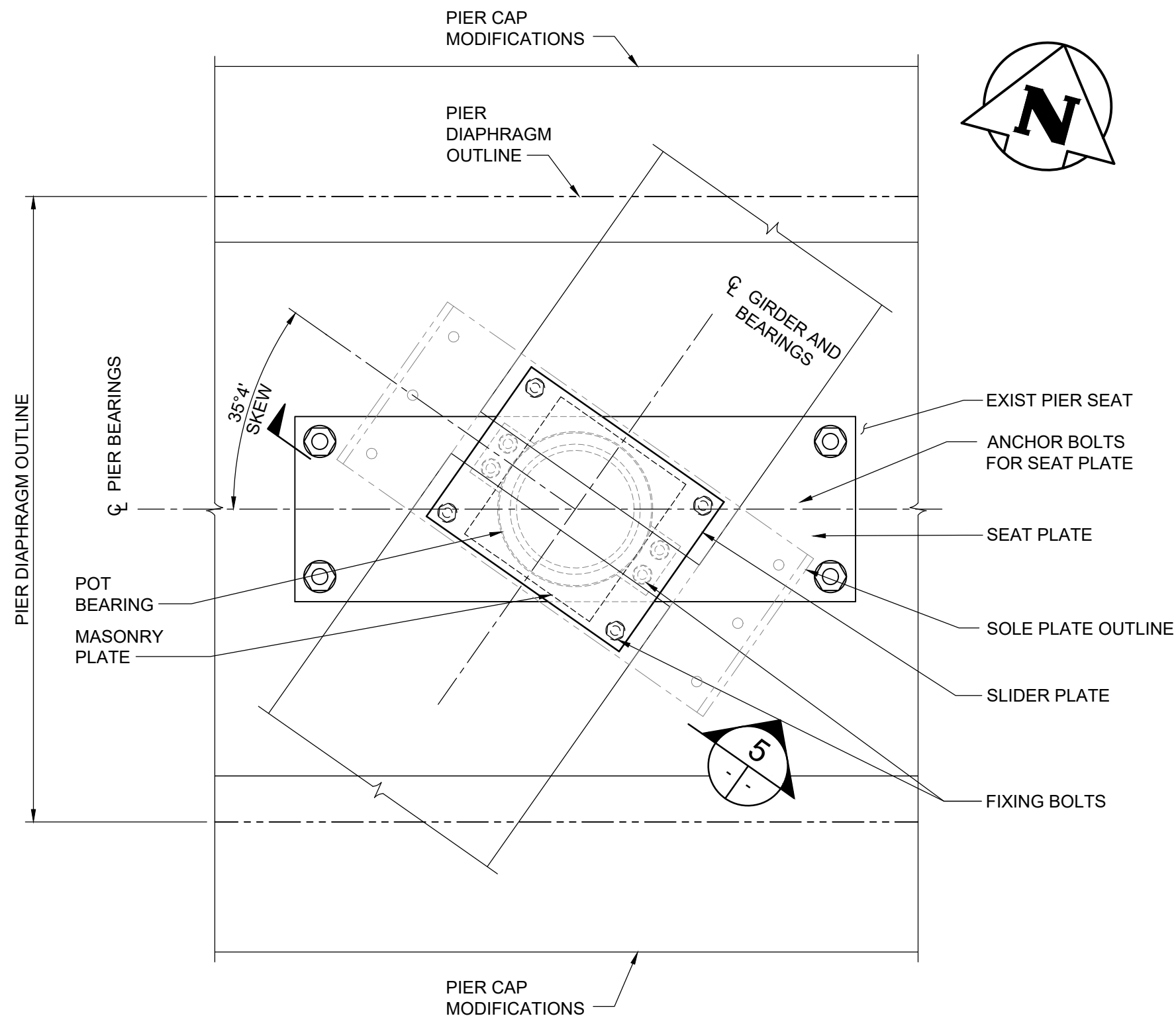


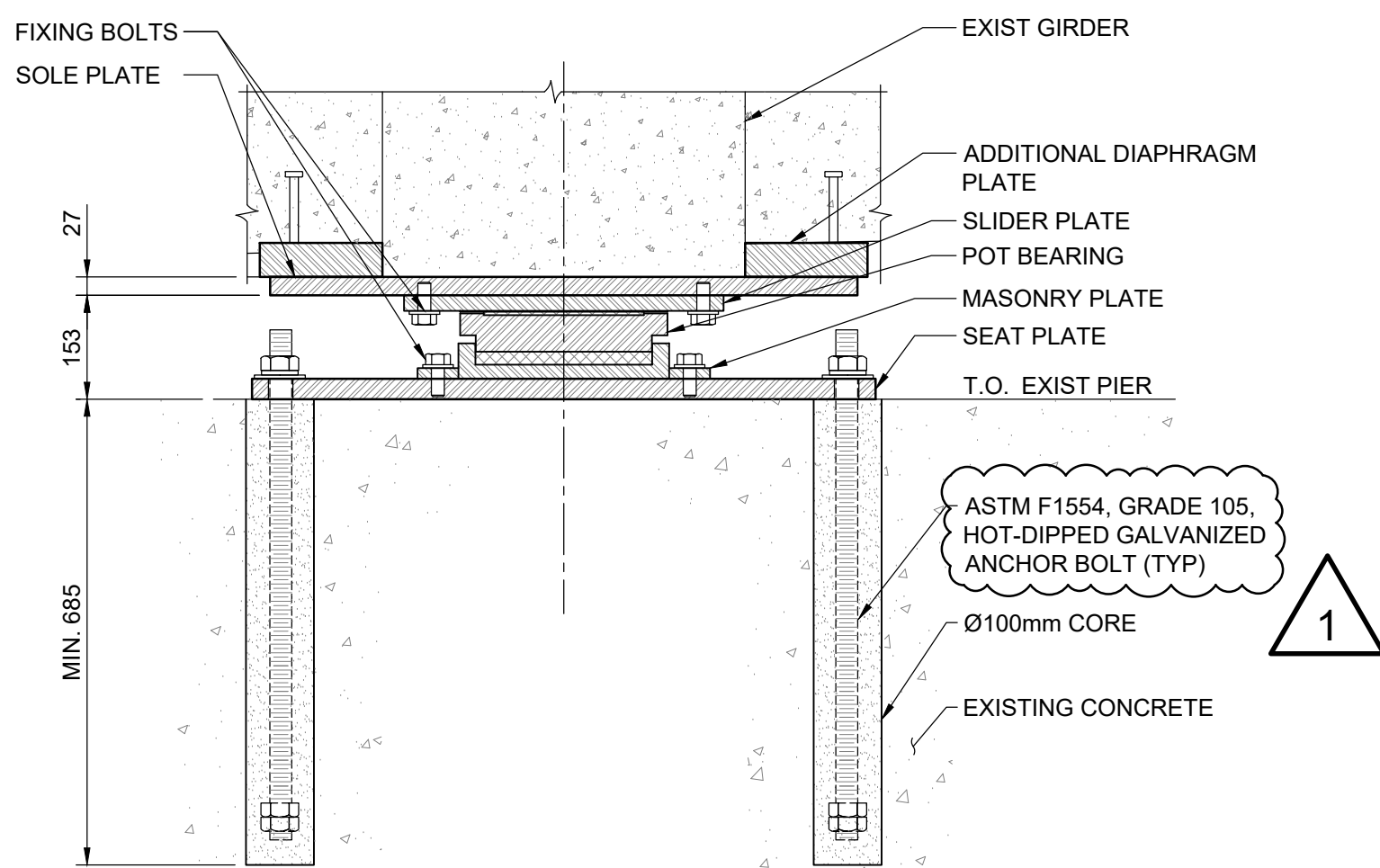
**1 EXP BEARING AT N-0 & N-5**  
1:10  
- SOUTH ABUTMENT N-0 AS SHOWN  
- NORTH ABUTMENT N-5 SIMILAR



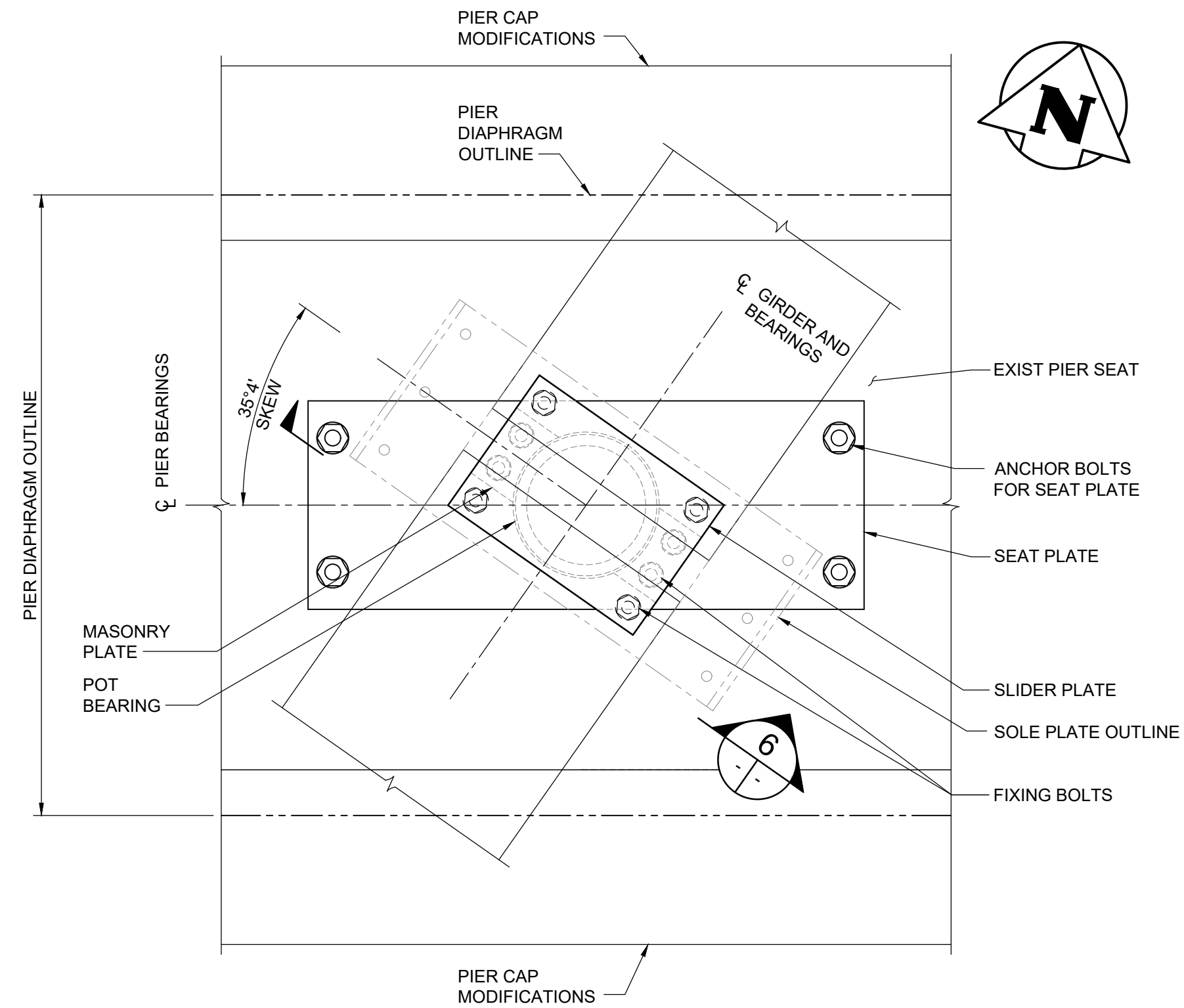
**4 SECTION**  
1:10



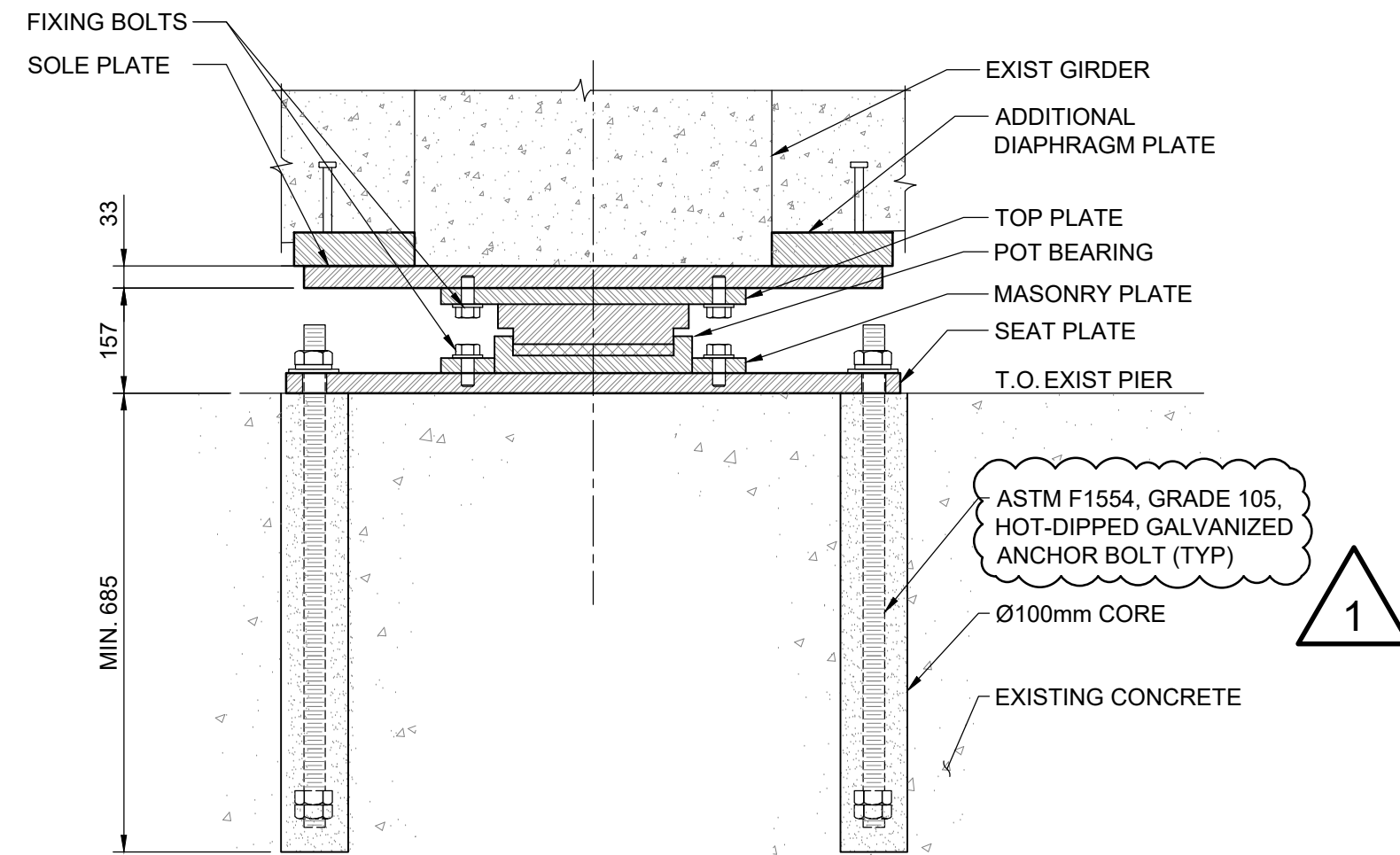
**2 EXP BEARING PLAN AT N-1, N-2 & N-4**  
1:10



**5 SECTION**  
1:10



**3 FIXED BEARING PLAN AT N-3**  
1:10



**6 SECTION**  
1:10

BEARING TAPERED PLATE	
	PROFILE SLOPE
N-0	-0.76
N-1	-0.21
N-2	0.43
N-3	0.85
N-4	1.28
N-5	1.76

NOTE:  
THE PROFILE SLOPE PROVIDED IS THE VERTICAL PROFILE OF THE COMPLETED BRIDGE FOLLOWING CONSTRUCTION. SLOPES GIVEN ALONG CONTROL LINE GOING UP STATION. UNLESS OTHERWISE ACCOUNTED FOR THE BEARING DESIGNER, THE BEARING SOLE PLATE SHALL BE TAPERED TO BE LEVEL FOLLOWING BRIDGE CONSTRUCTION.



B.M. ELEV.						ORIGINAL DRAWING REVISION "0" SEALED BY S.Y.I. AWAD 25.08.07	CONSULTANT DRAWING NO. 704-INF-MBI03007.01-DWG-S2216
NO.	REVISIONS	DATE	BY				
1	ISSUED FOR ADDENDUM 3	25.09.12	RL	DESIGNED BY	RL	REVIEWED BY	SA
0	ISSUED FOR TENDER	25.08.07	SA	DRAWN BY	EV	APPROVED BY	KA
				SCALE:	AS NOTED	ACCEPTED BY	DATE
						CAM WARD, P.ENG.	25.08.07
				DATE	25.08.07		

<b>THE CITY OF WINNIPEG</b> PUBLIC WORKS DEPARTMENT ENGINEERING DIVISION	
LAGIMODIERE TWIN OVERPASSES OVER CPKC KEEWATIN REHABILITATION AND RELATED WORKS	CITY DRAWING NUMBER B123-25-2216
NORTHBOUND STRUCTURE BEARING DETAILS	SHEET 16 OF 48
	2216