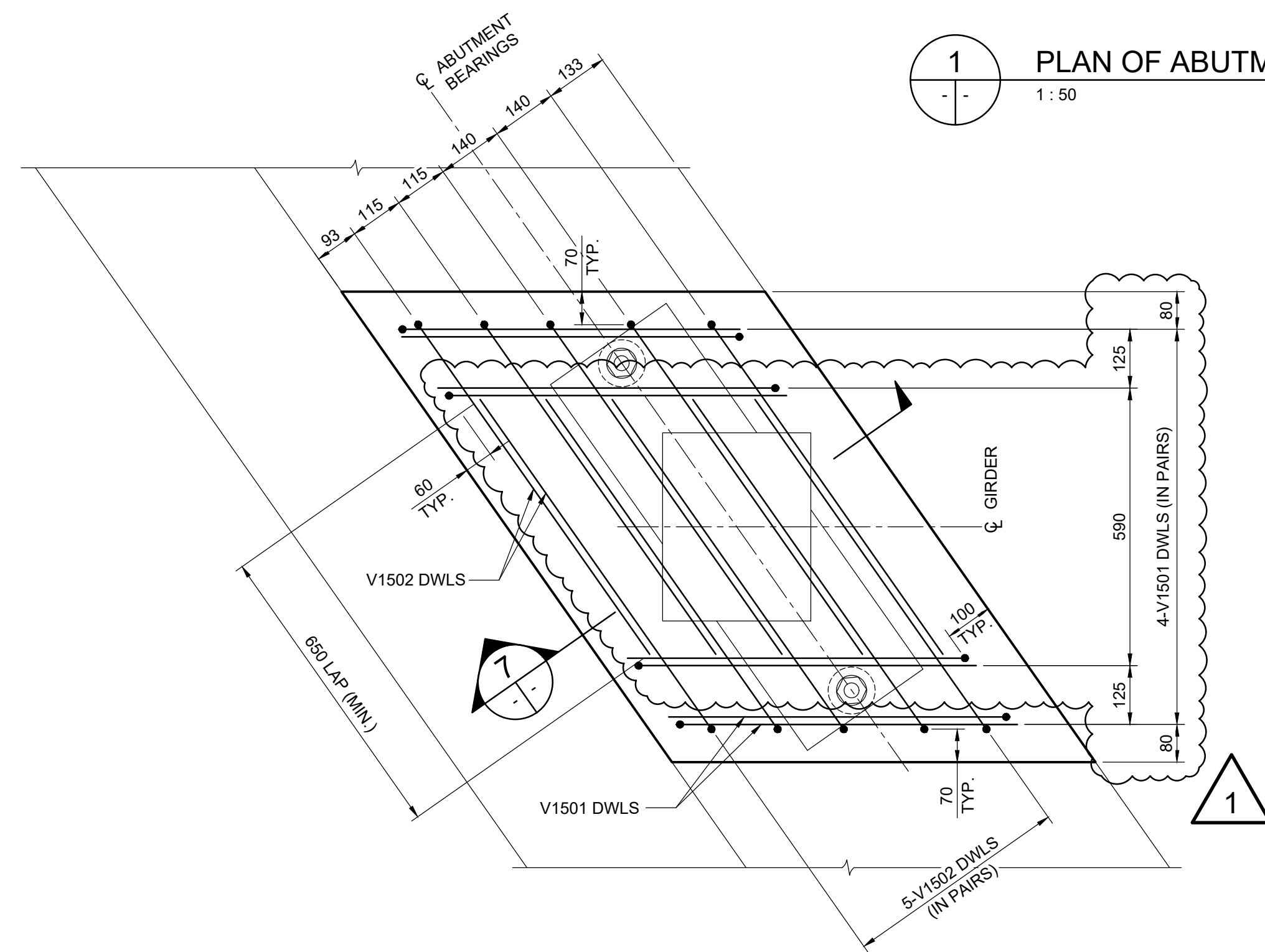
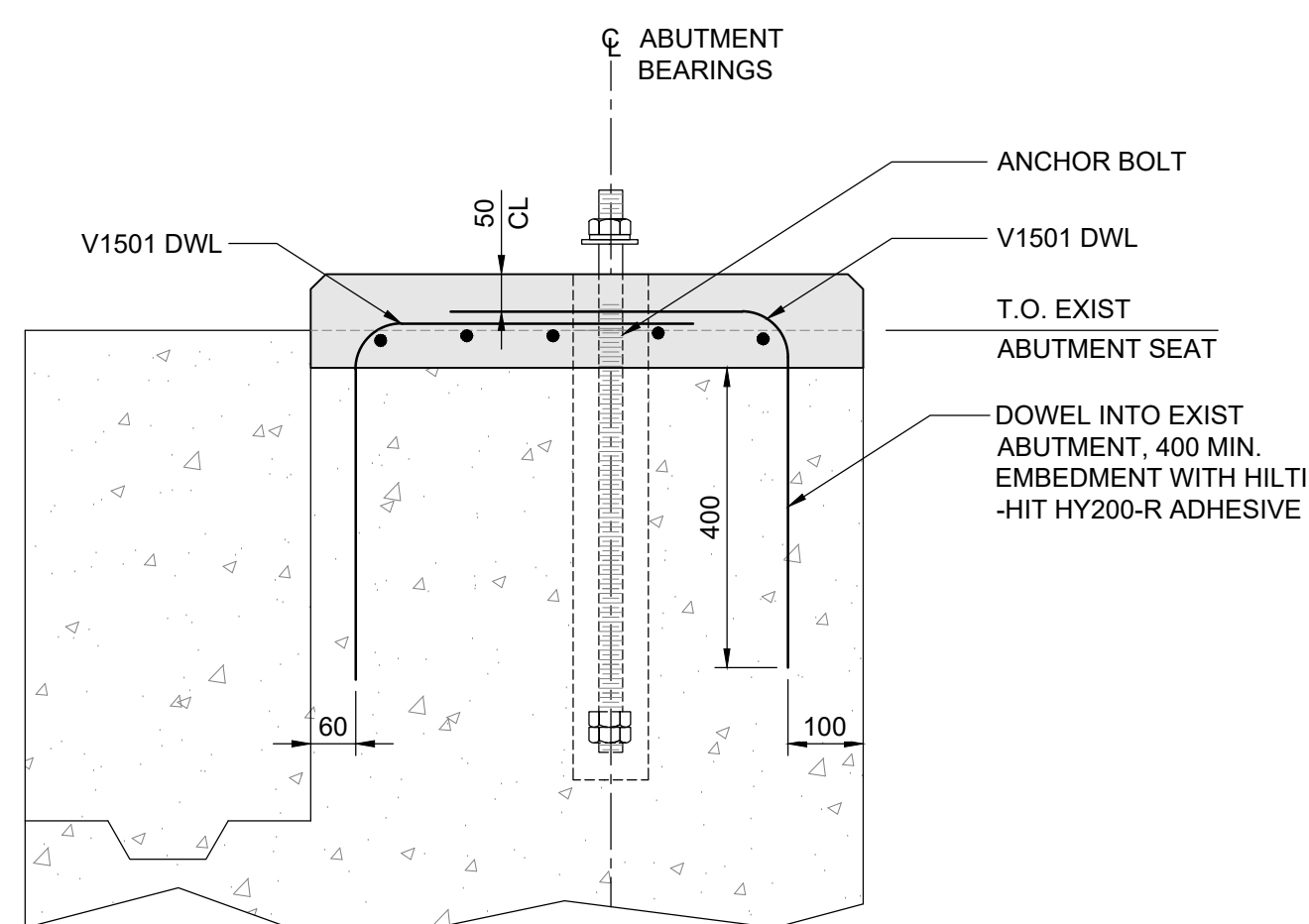


1 PLAN OF ABUTMENT N-0
1 : 50

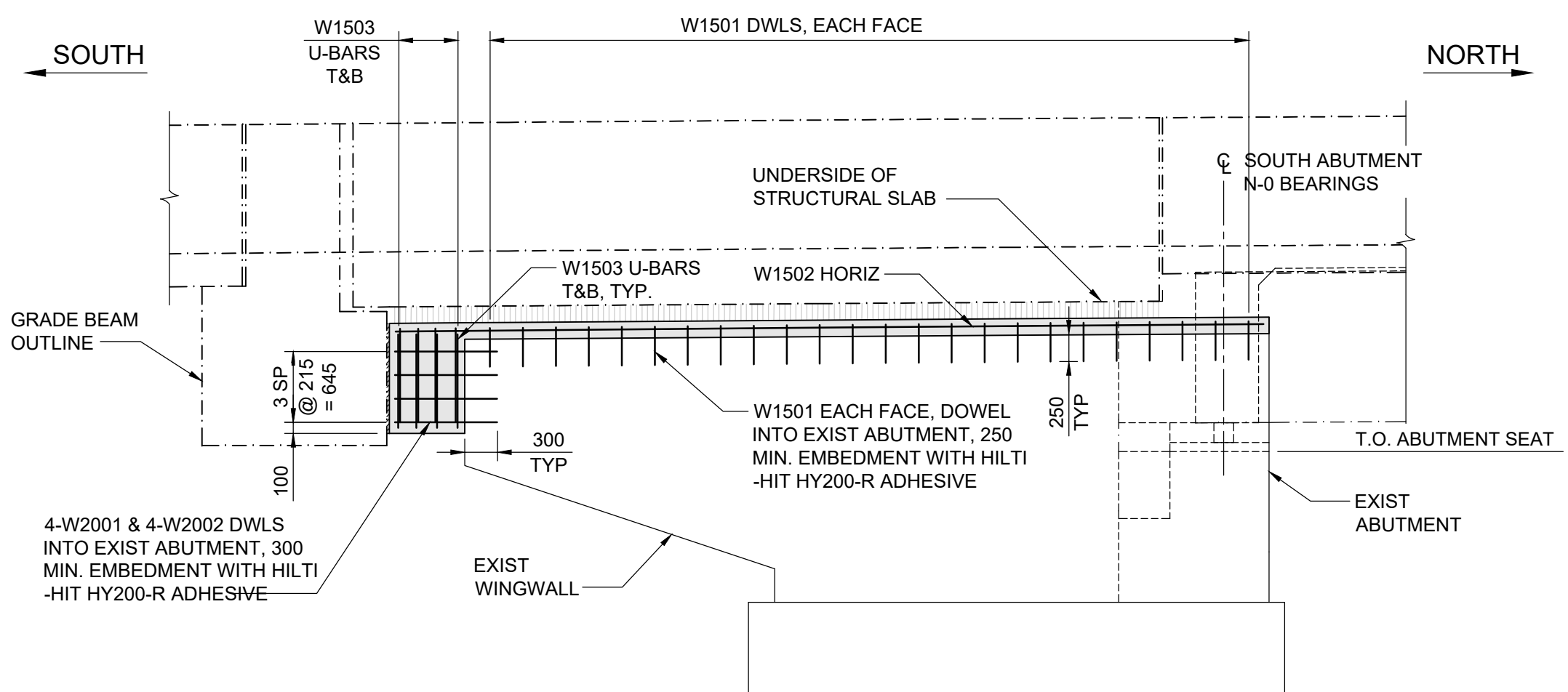


6 PLAN - PEDESTAL REINFORCING
1 : 10

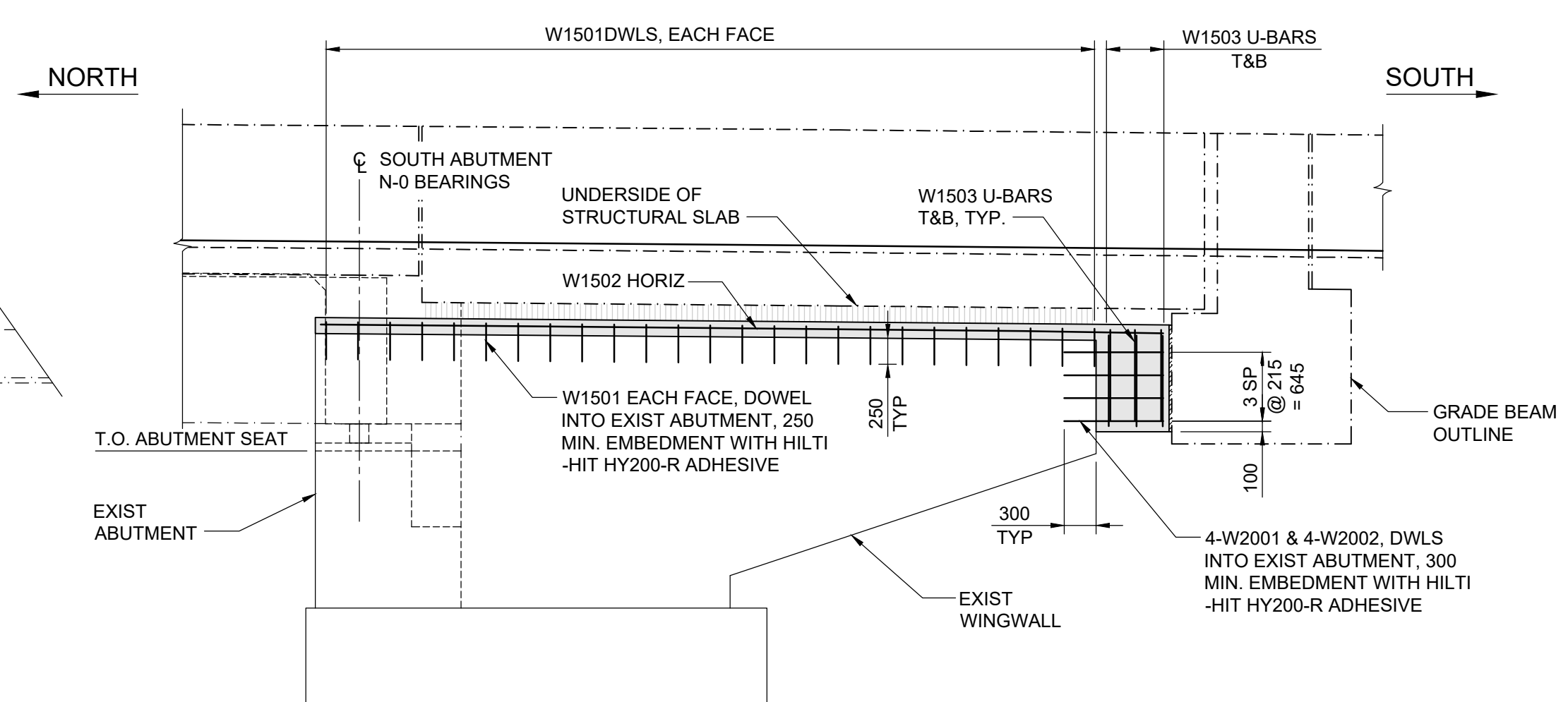
5 LOCATIONS AS SHOWN
FINAL LOCATION OF PEDESTAL REINFORCING DOWELS
SHALL BE CONFIRMED WITH BEARING ANCHOR LOCATIONS



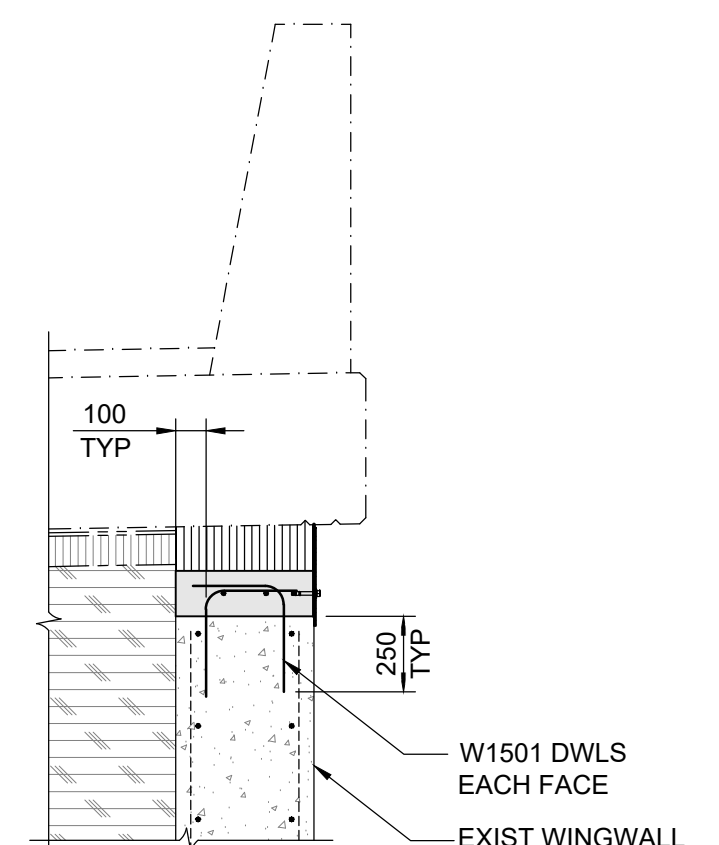
7 SECTION
1 : 10



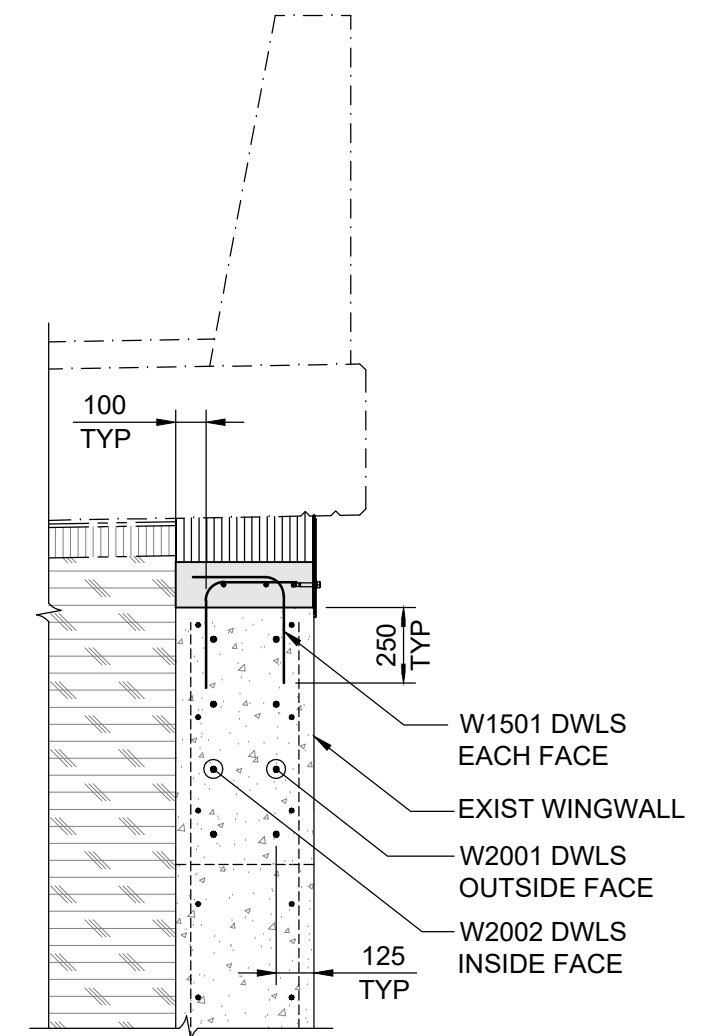
2 ABUTMENT N-0 - EAST ELEVATION
1 : 50



4 ABUTMENT N-0 - WEST ELEVATION
1 : 50



3 SECTION
1 : 25





5 SECTION
1 : 25

NOTE:
- LOCATIONS AND SPACING OF PROPOSED DOWELS ARE APPROXIMATE. CONTRACTOR SHALL LOCATE EXISTING REINFORCING AND NOTIFY ENGINEER OF ANY DISCREPANCIES.

ENGINEERS
GEOSCIENTISTS
MANITOBA

Certificate of Authorization
Tetra Tech Canada Inc.
No. 6499

B.M. ELEV.				<div></div> <div>TETRA TECH</div>		ORIGINAL DRAWING REVISION " 0 " SEALED BY S.Y.I. AWAD 25.08.07		<div></div> <div>THE CITY OF WINNIPEG</div> <div>PUBLIC WORKS DEPARTMENT ENGINEERING DIVISION</div>		CITY DRAWING NUMBER		
										B123-25-2205		
										SHEET 5 OF 48		
1	ISSUED FOR ADDENDUM 3	25.09.12	RL	SCALE:	AS NOTED	ACCEPTED BY	DATE	CONSULTANT DRAWING NO. 704-INF.MBI03007.01-DWG-S2205		LAGIMODIERE TWIN OVERPASSES OVER CPKC KEEWATIN REHABILITATION AND RELATED WORKS		
0	ISSUED FOR TENDER	25.08.07	SA			CAM WARD, P.ENG.	25.08.07			NORTHBOUND STRUCTURE SOUTH ABUTMENT N-0 - REINFORCING DETAILS		
NO.	REVISIONS	DATE	BY	DATE	25.08.07					2205		