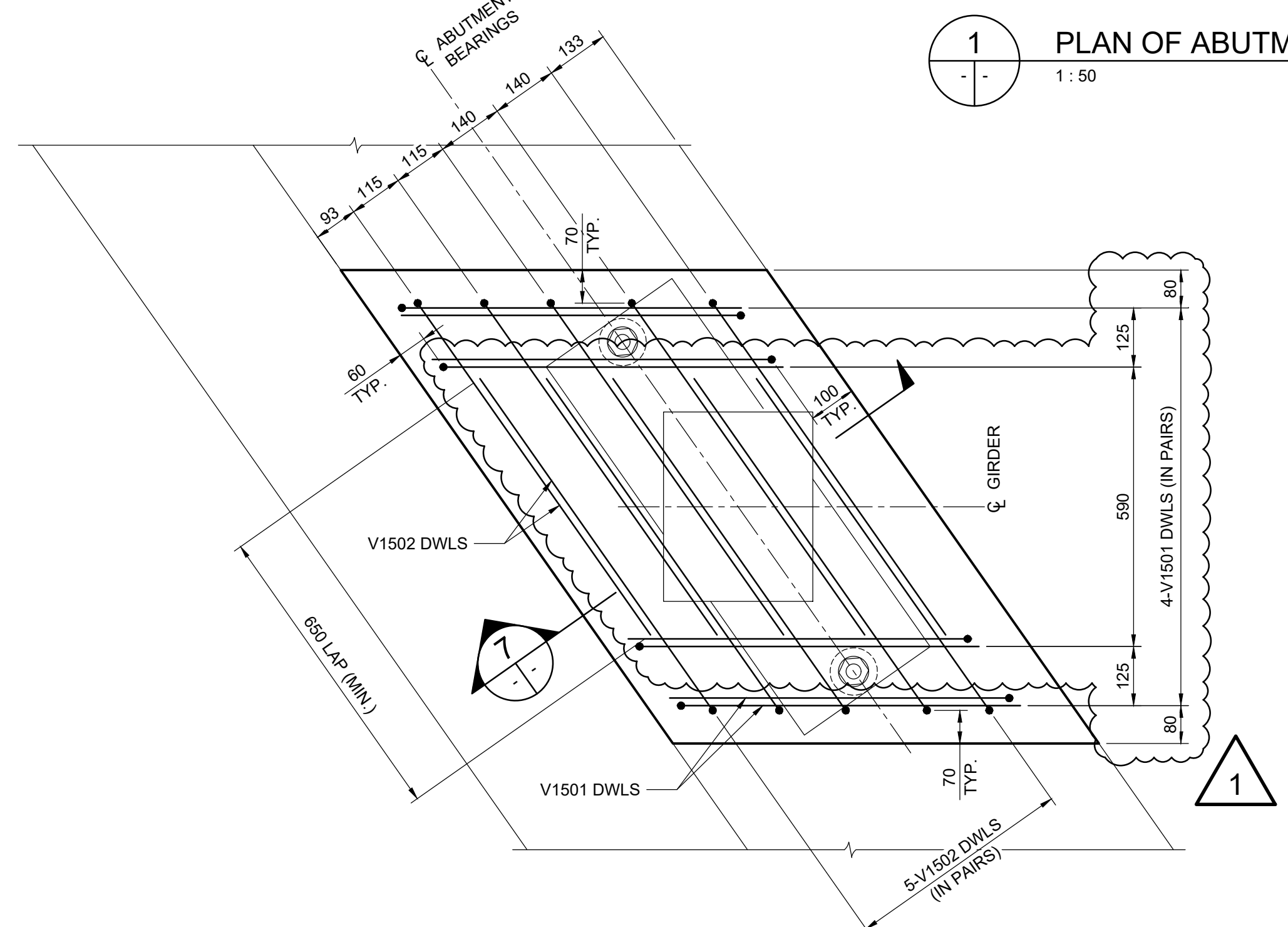
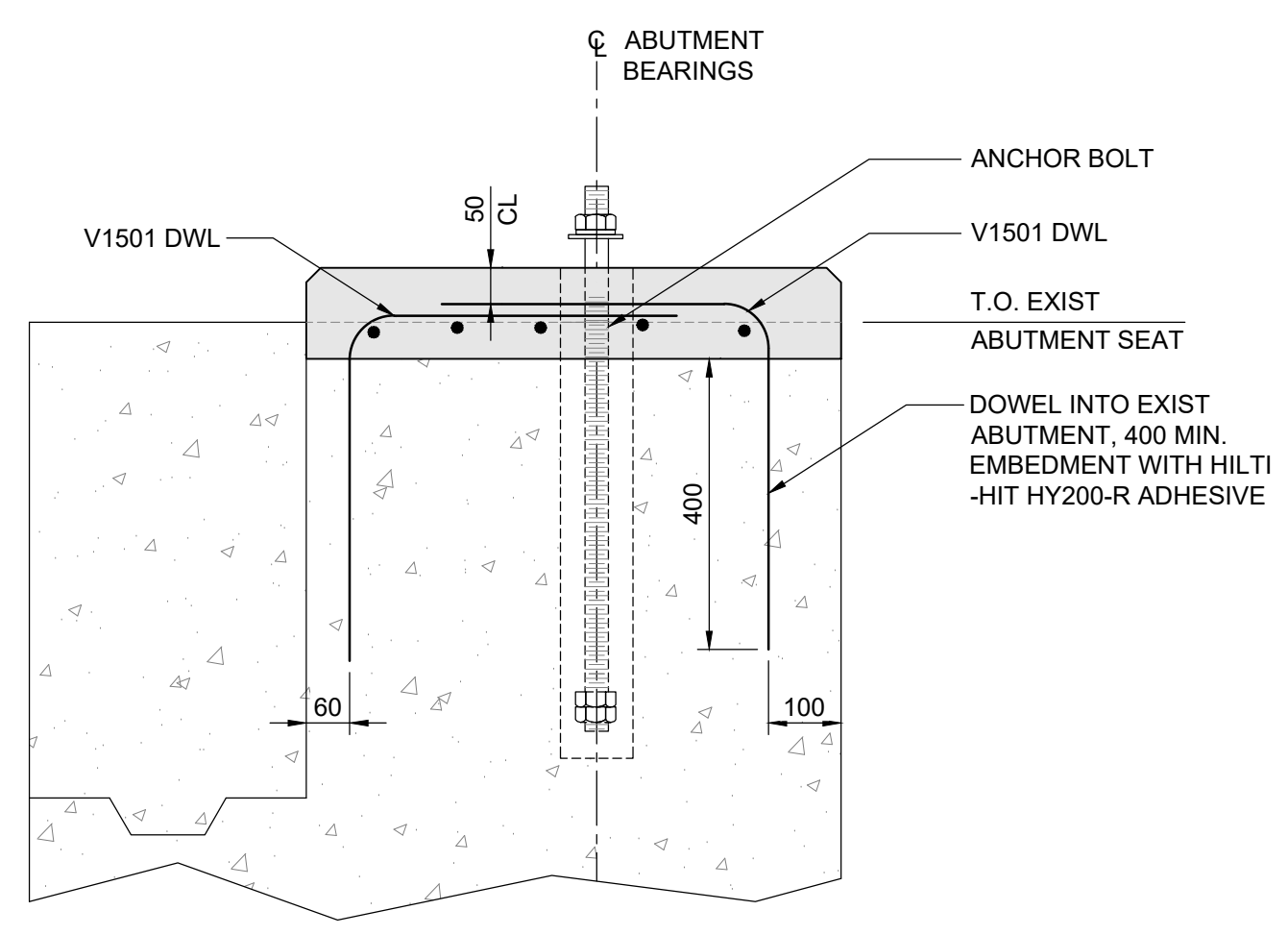


**1 PLAN OF ABUTMENT S-0**  
1 : 50

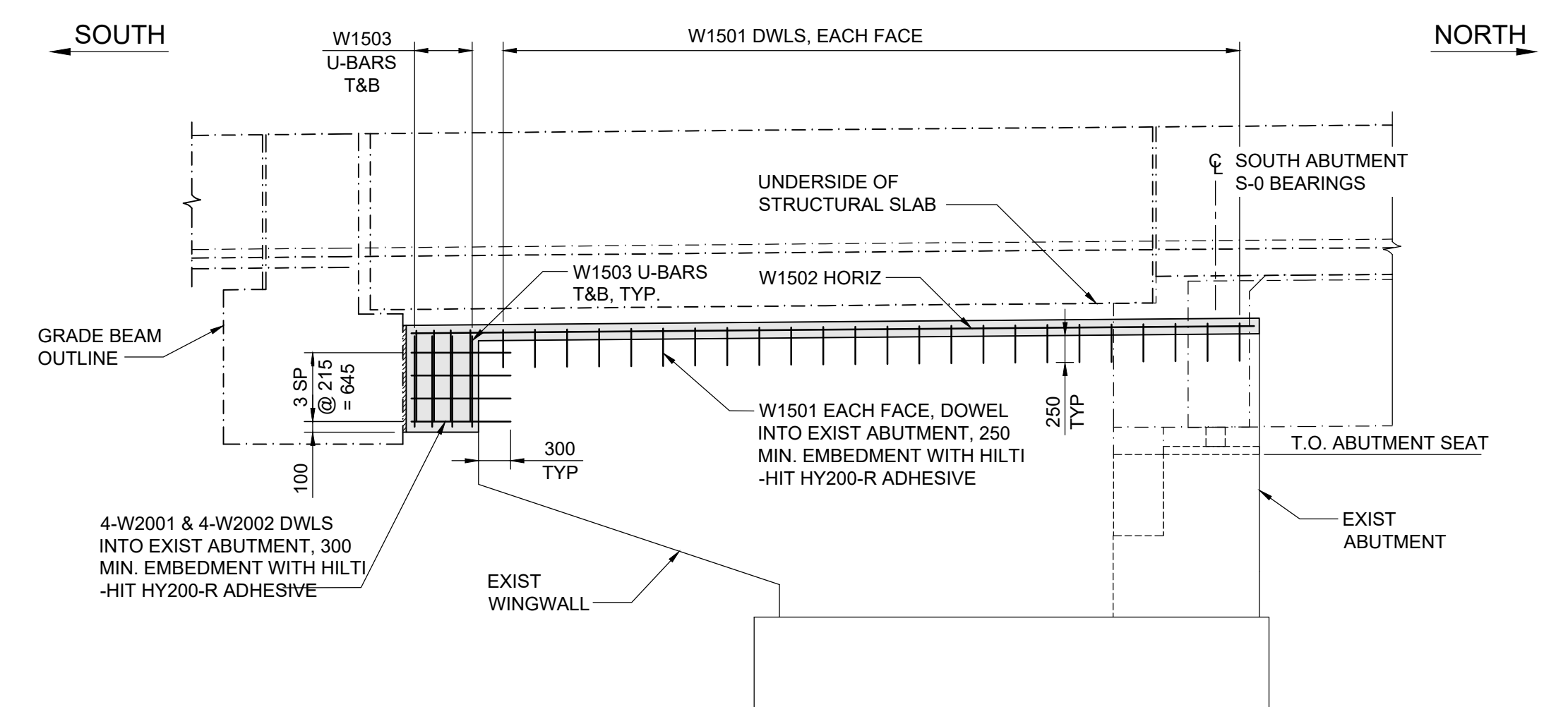


**6 PLAN - PEDESTAL REINFORCING**  
1 : 10

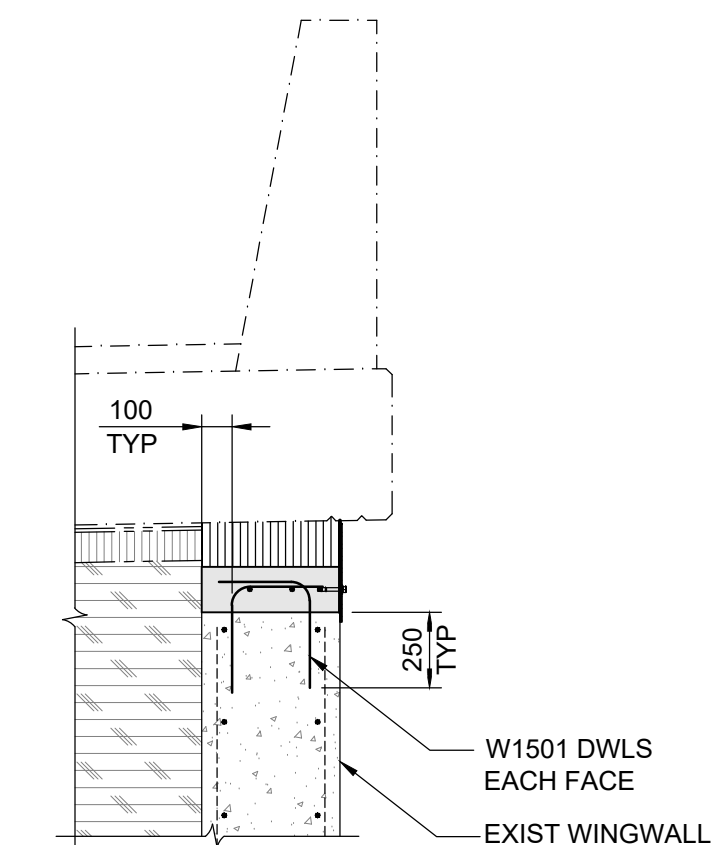
- 5 LOCATIONS AS SHOWN  
- FINAL LOCATION OF PEDESTAL REINFORCING DOWELS SHALL BE CONFIRMED WITH BEARING ANCHOR LOCATIONS



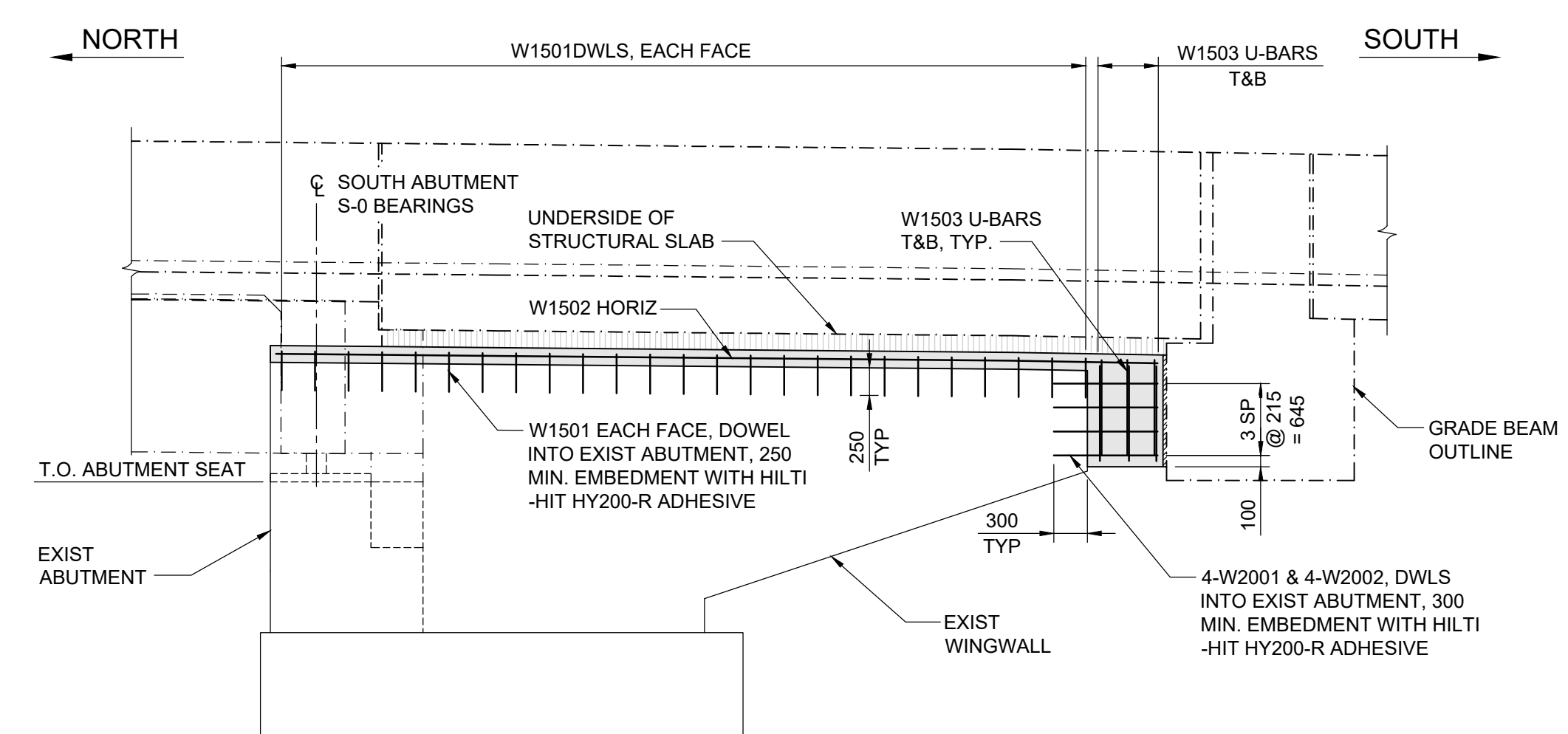
**7 SECTION**  
1 : 10



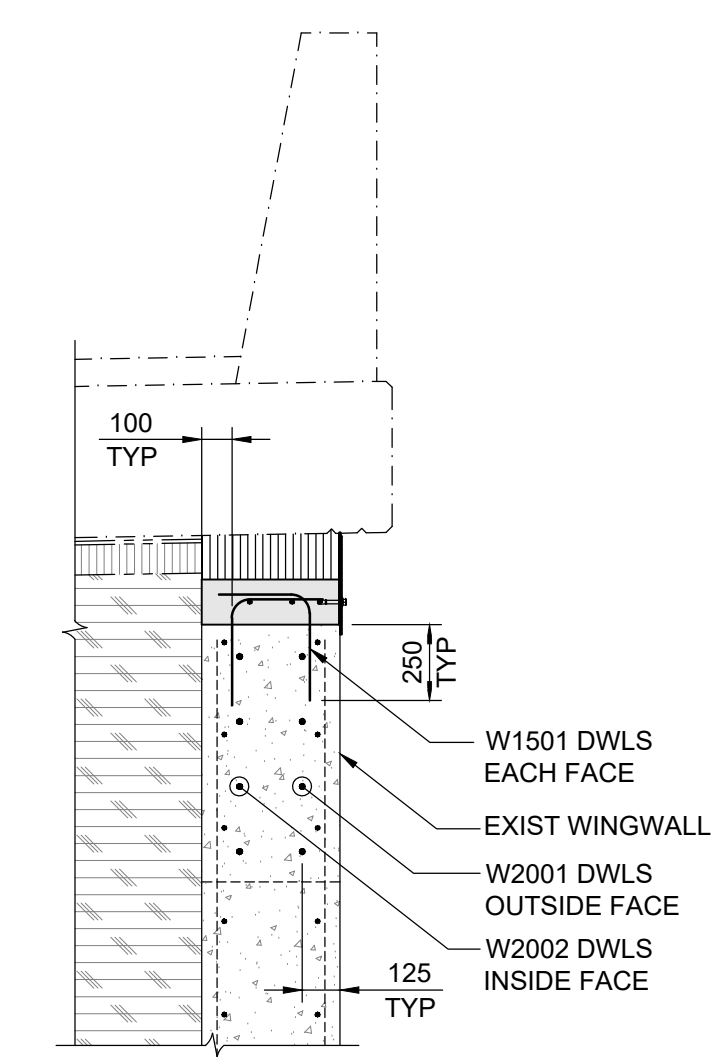
**2 ABUTMENT S-0 - EAST ELEVATION**  
1 : 50



**3 SECTION**  
1 : 25





**4 ABUTMENT S-0 - WEST ELEVATION**  
1 : 50



**5 SECTION**  
1 : 25

NOTE:  
- LOCATIONS AND SPACING OF PROPOSED DOWELS ARE APPROXIMATE. CONTRACTOR SHALL LOCATE EXISTING REINFORCING AND NOTIFY ENGINEER OF ANY DISCREPANCIES.

**ENGINEERS**  
GEOSCIENTISTS  
MANITOBA  
Certificate of Authorization  
Tetra Tech Canada Inc.  
No. 6499

B.M. ELEV.				<div></div> <div>TETRA TECH</div>		ORIGINAL DRAWING REVISION "0" SEALED BY S.Y.I. AWAD 25.08.07		<div></div> <div>THE CITY OF WINNIPEG</div> <div>PUBLIC WORKS DEPARTMENT ENGINEERING DIVISION</div>		CITY DRAWING NUMBER	
										B123-25-2105	
										SHEET 5 OF 47	
1	ISSUED FOR ADDENDUM 3	25.09.12	RL	SCALE: AS NOTED		ACCEPTED BY DATE CAM WARD, P.ENG. 25.08.07		LAGIMODIERE TWIN OVERPASSES OVER CPKC KEEWATIN REHABILITATION AND RELATED WORKS		SOUTHBOUND STRUCTURE SOUTH ABUTMENT S-0 - REINFORCING DETAILS	
0	ISSUED FOR TENDER	25.08.07	SA					CONSULTANT DRAWING NO. 704-INF-MBI03007.01-DWG-S2105		2105	
NO. REVISIONS		DATE	BY	DATE	25.08.07						