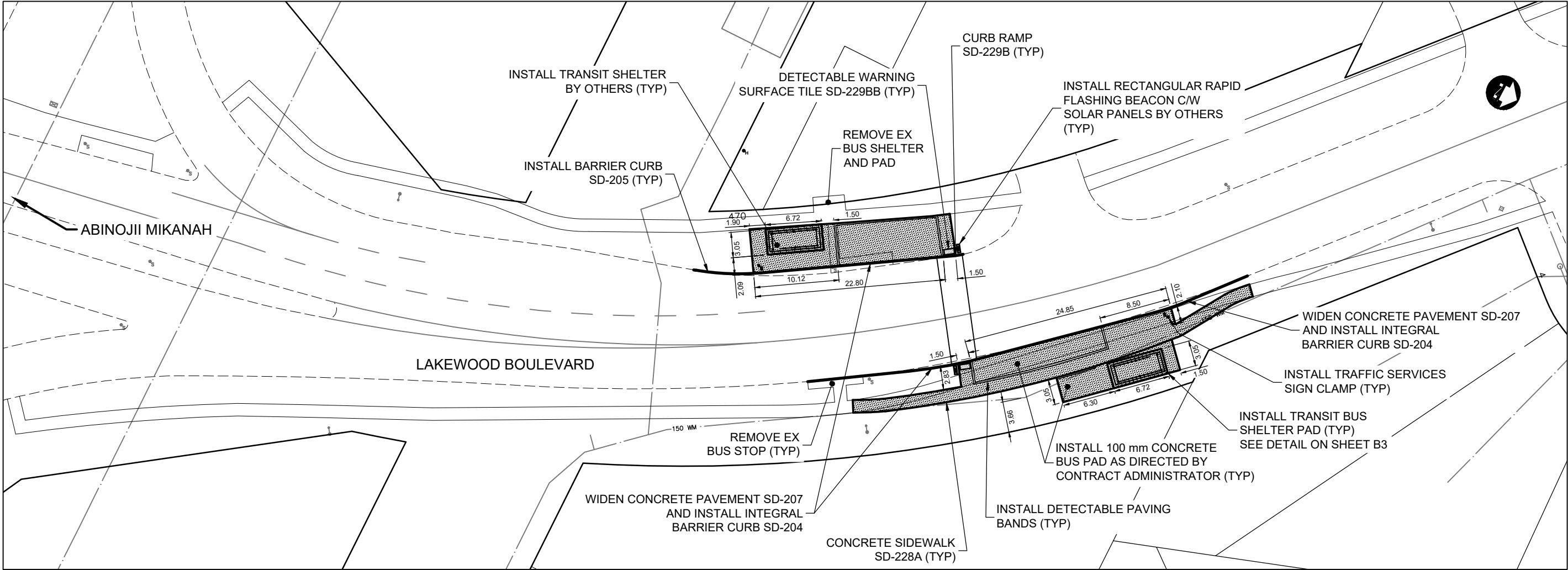


**APPENDIX 'C'**  
**TRANSIT STOP IMPROVEMENTS**





- NOTES:**
1. ALL WORK AND MATERIALS TO BE IN ACCORDANCE WITH LATEST REVISION OF THE CITY OF WINNIPEG STANDARD CONSTRUCTION SPECIFICATIONS.
  2. LEGAL PLAN AND UNDERGROUND INFORMATION FROM CITY OF WINNIPEG LBIS. ALL UNDERGROUNDS TO BE VERIFIED BY THE CONTRACTOR IN THE FIELD.
  3. CONTRACTOR TO TAKE PRECAUTIONARY STEPS TO AVOID DAMAGE FROM CONSTRUCTION ACTIVITIES TO TREES WITHIN THE LIMITS OF CONSTRUCTION.
  4. LOCATION OF EXISTING SERVICES TO BE CONFIRMED IN THE FIELD BY THE CONTRACTOR.
  5. LIMITS OF BOULEVARD GRADING TO BE FINALIZED IN THE FIELD BY THE CONTRACT ADMINISTRATOR.
  6. ADJUST ALL WATER VALVES, MANHOLES, CATCH BASINS AND CATCH PITS TO GRADE.
  7. PAVEMENT REPAIRS SHOWN ARE ONLY REPRESENTATIVE OF APPROXIMATION OF CONSTRUCTION.
  8. CONTRACTOR TO INSTALL CONCRETE RISERS BY REMOVING THE EXISTING FLAT TOP REDUCER, PLACING RISERS AS DIRECTED BY THE CONTRACT ADMINISTRATOR AND THEN REINSTALLING THE EXISTING FLAT TOP REDUCER.
  9. EXCAVATIONS WITHIN 1.0m FROM THE OUTER EDGE OF WM TO THE NEAREST EDGE OF EXCAVATION ARE TO BE CONDUCTED WITHOUT HEAVY VIBRATORY EQUIPMENT. BOTH SAW CUTTING AND REMOVAL OR SOFT DIGGING ARE ACCEPTABLE MEANS OF EXCAVATION AT THESE LOCATIONS.

	HYDRANT		150 WM		WATERMAIN		150 WM		CONCRETE ROAD
	VALVE		300 LDS		LAND DRAINAGE SEWER		300 LDS		ASPHALT ROAD
	CURB STOP		250 WWS		WASTE WATER SEWER		250 WWS		CONC ROAD W/ASP OVERLAY
	LIGHT STANDARD		HYDRO		HYDRO		HYDRO		CONCRETE SIDEWALK
	HYDRO POLE		BELLMTS		BELLMTS		BELLMTS		ASPHALT PATH
	TREE		100 GAS		100 GAS		100 GAS		LANDSCAPING FEATURE
	GEODETIC BENCH MARK		T.S.		TRAFFIC SIGNALS		T.S.		GRASS/SOD
	SURVEY BAR		S.L.		STREET LIGHTS		S.L.		ELEVATION
	MANHOLE		TRAFFIC SIGNAL POLE		TRAFFIC SIGNAL POLE		TRAFFIC SIGNAL POLE		PROPERTY LINE
	CATCH BASIN		PAVING STONE		PAVING STONE		PAVING STONE		CURB RAMP
	CATCH PIT		CURB RENEWAL		CURB RENEWAL		CURB RENEWAL		DETECTABLE TILE
EXISTING	LEGEND-PLAN	PROPOSED	EXISTING	LEGEND-PLAN	PROPOSED	EXISTING	LEGEND-PLAN	PROPOSED	EXISTING

METRIC

WHOLE NUMBERS INDICATE MILLIMETRES  
DECIMALIZED NUMBERS INDICATE METRES

ENGINEERS  
GEOSCIENTISTS  
MANITOBA

Certificate of Authorization  
Dillon Consulting Limited (MB)  
No. 1789 Date: 2025/03/25

B.M.  
ELEV.

DESIGNED BY  
DRC

DRAWN BY  
DRC

CHECKED BY  
LAS

APPROVED BY  
TJP

HOR. SCALE  
1:500

VERTICAL  
-

RELEASED FOR CONSTRUCTION

DATE

ENGINEER'S SEAL

CONSULTANT PROJECT NUMBER  
24-9227

THE CITY OF WINNIPEG

PUBLIC WORKS DEPARTMENT

2025 RESIDENTIAL STREETS RENEWAL PROGRAM  
CROMWELL STREET AND VARIOUS OTHER LOCATIONS

LAKEWOOD BOULEVARD  
TRANSIT STOP IMPROVEMENT

CITY DRAWING NUMBER

SHEET B2 OF B5

TENDER NO.

0

ISSUED FOR TENDER

25/03/25

LAS

NO.

REVISIONS

DATE

BY

GENERAL CONSTRUCTION NOTES:

1. CITY OF WINNIPEG TRANSIT DEPARTMENT WILL BE RESPONSIBLE TO INSTALL TRANSIT SHELTERS.
2. CONTRACTOR RESPONSIBLE TO "MAKE GOOD" AND CLEAN SITE, REPAIR DAMAGED SOD, ETC. AT COMPLETION OF CONSTRUCTION.

GENERAL CONCRETE NOTES:

3. ALL DIMENSIONS SHALL BE CHECKED AND VERIFIED PRIOR TO COMMENCING CONSTRUCTION.
4. CONFIRM THE LOCATION OF ALL SUBGRADE SERVICES PRIOR TO COMMENCING SITE WORK.
5. EXCAVATE ALL TOPSOIL, ORGANIC MATERIAL AND LOOSE OR UNSUITABLE FILL TO THE APPROVAL OF THE CONTRACT ADMINISTRATOR.
6. EXCAVATE BELOW SLABS ON FILL TO PROVIDE A MINIMUM OF 150 mm OF GRANULAR. FILL SHALL BE COMPACTED TO 95% MODIFIED PROCTOR DENSITY.
7. CONSTRUCTION JOINT LOCATIONS ARE TO BE APPROVED BY THE CONTRACT ADMINISTRATOR.
8. ALL CONCRETE PILES AND BASES TO BE REVIEWED AND APPROVED BY SIGNAGE & SHELTER MANUFACTURERS' STRUCTURAL ENGINEER PRIOR TO CONSTRUCTION. CONTRACTOR TO MAKE ANY CHANGES REQUIRED AT NO EXTRA COST.

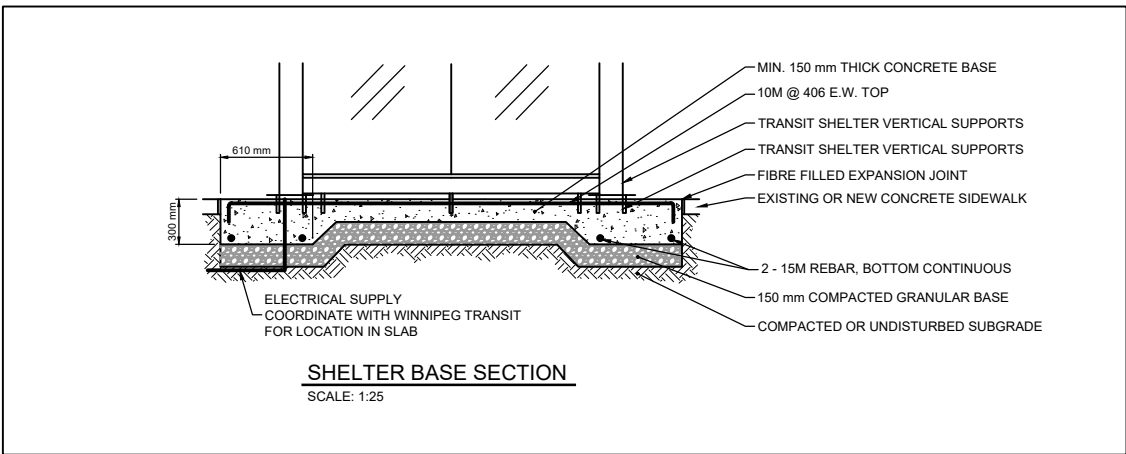
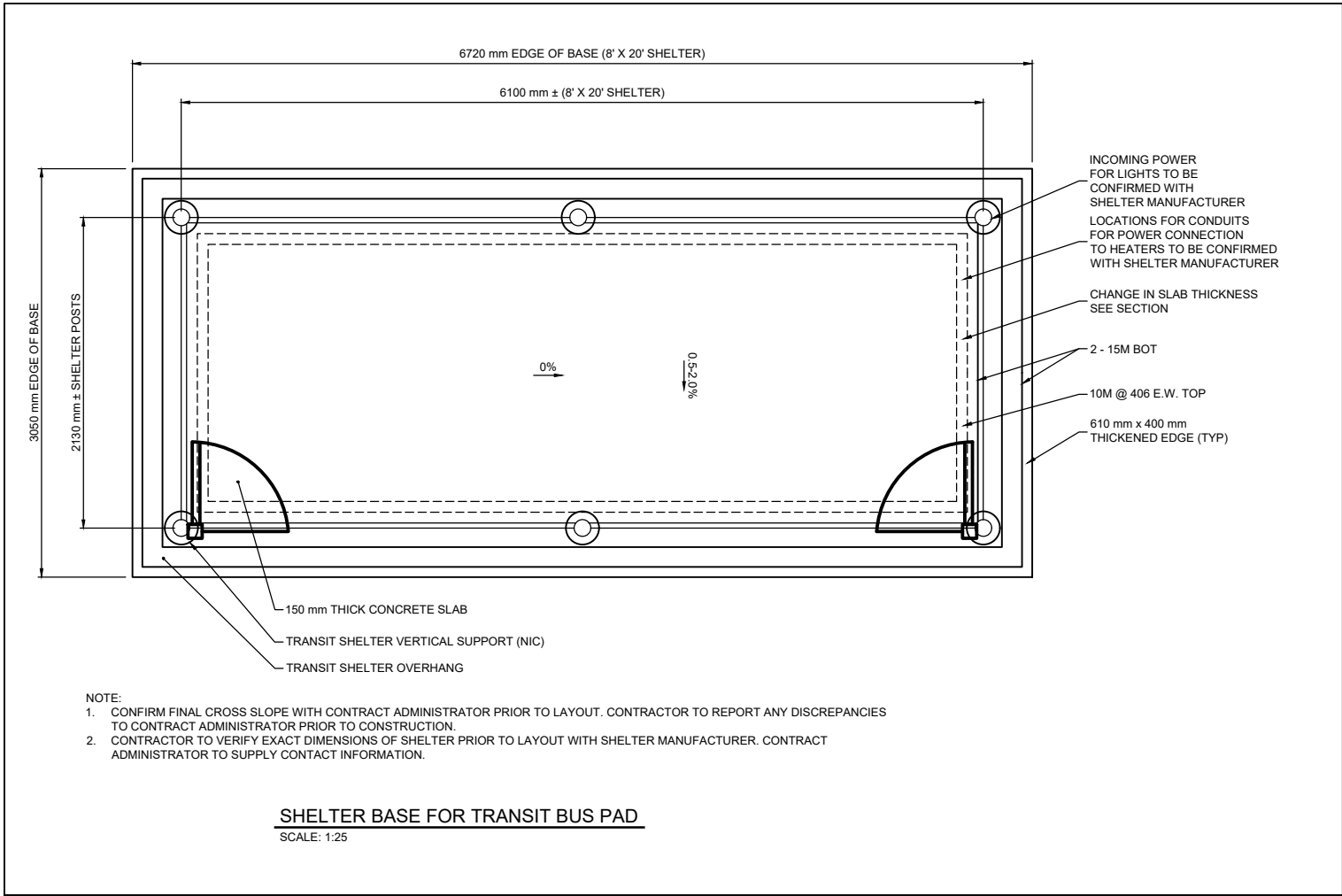
REINFORCING NOTES:

9. PERFORM CONCRETE WORK IN ACCORDANCE WITH CAN3-A23.3-M84 UNLESS INDICATED OTHERWISE.
10. ALL REINFORCING BARS SHALL BE DEFORMED BARS WITH A MINIMUM SPECIFIED YIELD STRENGTH 400MPa FOR 20M BARS AND 300MPa FOR 15M AND 10M BARS IN ACCORDANCE WITH CAN-630.18-M92.
11. COVER TO REINFORCING: SLABS 50 mm CLEAR TOP AND BOTTOM.
12. BEFORE PLACING ENSURE REINFORCING IS CLEAN, FREE OF LOOSE SCALE, DIRT, OR OTHER FOREIGN COATING WHICH WOULD REDUCE THE BOND TO CONCRETE.
13. SHOP DRAWINGS SHALL BE SUBMITTED WHICH CLEARLY INDICATE BAR SIZES, SPACINGS, LOCATIONS AND QUANTITIES OF REINFORCING STEEL AND WIRE FABRIC, BENDING AND CUTTING SCHEDULES, AND SUPPORTING AND SPACING DEVICES FOR REVIEW PRIOR TO FABRICATION OF THE REINFORCING STEEL. DETAIL IN ACCORDANCE WITH THE LATEST ACI DETAILING MANUAL.

CONCRETE NOTES:

14. ALL CONCRETE WORK SHALL BE IN ACCORDANCE WITH CAN3-A23.1-M90 - CONCRETE CONSTRUCTION.
15. PROPORTION NORMAL DENSITY CONCRETE IN ACCORDANCE WITH CAN-A23.1-M90. REFER TO SPECIFICATION FOR DESIGN MIXES.



16. CONSTRUCT FORMWORK, SHORING AND BRACING TO MEET DESIGN, CODE AND CAN3-A23.1-M90 REQUIREMENTS, ACCURATELY, SO THAT RESULTANT FINISHED CONCRETE CONFORMS TO SHAPES, LINES AND DIMENSIONS INDICATED ON THE DRAWINGS.
17. CONSTRUCTION JOINTS, OUR SCHEDULING AND WORK PROCEDURES SHALL BE DISCUSSED WITH THE CONTRACT ADMINISTRATOR PRIOR TO COMMENCING CONSTRUCTION.
18. FOR COLD WEATHER CONCRETING, ALL ICE, SNOW AND FROST SHALL BE REMOVED FROM FORMWORK AND THE TEMPERATURES OF ALL CONTRACT SURFACES SHALL BE RAISED ABOVE 10°C FOR 24 HOURS PRIOR TO CASTING CONCRETE SHALL BE NOT LESS THAN 20C NOR MORE THAN 5C FOR AN ADDITIONAL 4 DAYS.
19. NOTIFY THE CONTRACT ADMINISTRATOR 48 HOURS PRIOR TO POURING CONCRETE.
20. THREE CONCRETE TEST CYLINDERS AND ONE SLUMP TEST SHALL BE TAKEN FOR EVERY 75 CUBIC METERS OF EACH CLASS OF CONCRETE PLACED OR FOR EACH DAY OF CONCRETE PLACEMENT IF THE LATTER IS LESS THAN 75 CUBIC METERS. TESTING SHALL BE PERFORMED IN ACCORDANCE WITH CAN3-A23.1-M90.

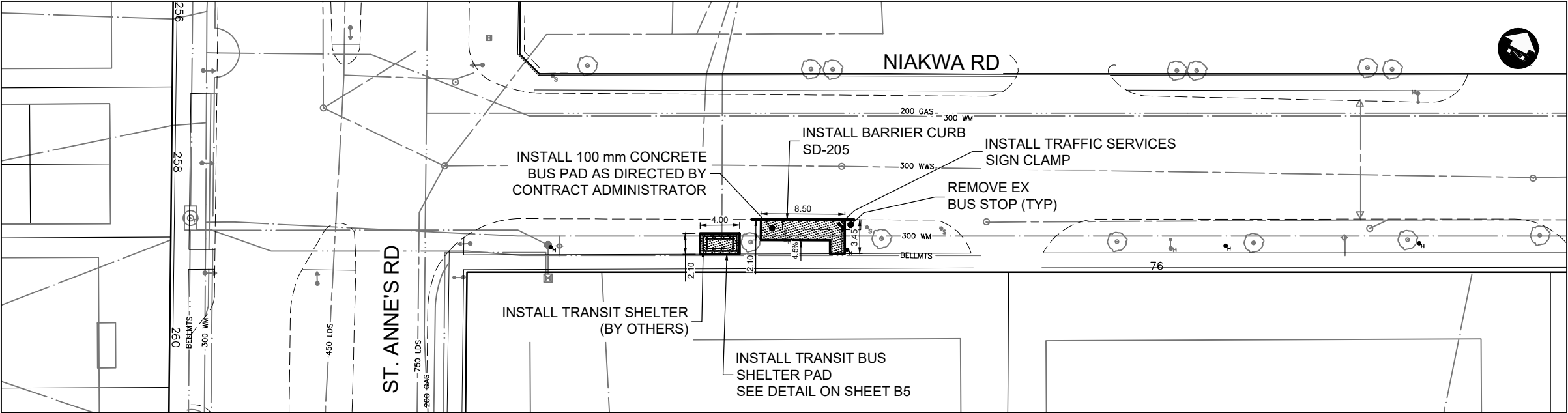


NOTES:

1. ALL WORK AND MATERIALS TO BE IN ACCORDANCE WITH LATEST REVISION OF THE CITY OF WINNIPEG STANDARD CONSTRUCTION SPECIFICATIONS.
2. LEGAL PLAN AND UNDERGROUND INFORMATION FROM CITY OF WINNIPEG LBIS. ALL UNDERGROUNDS TO BE VERIFIED BY THE CONTRACTOR IN THE FIELD.
3. CONTRACTOR TO TAKE PRECAUTIONARY STEPS TO AVOID DAMAGE FROM CONSTRUCTION ACTIVITIES TO TREES WITHIN THE LIMITS OF CONSTRUCTION.
4. LOCATION OF EXISTING SERVICES TO BE CONFIRMED IN THE FIELD BY THE CONTRACTOR.
5. LIMITS OF BOULEVARD GRADING TO BE FINALIZED IN THE FIELD BY THE CONTRACT ADMINISTRATOR.
6. ADJUST ALL WATER VALVES, MANHOLES, CATCH BASINS AND CATCH PITS TO GRADE.
7. PAVEMENT REPAIRS SHOWN ARE ONLY REPRESENTATIVE OF APPROXIMATION OF CONSTRUCTION.
8. CONTRACTOR TO INSTALL CONCRETE RISERS BY REMOVING THE EXISTING FLAT TOP REDUCER, PLACING RISERS AS DIRECTED BY THE CONTRACT ADMINISTRATOR AND THEN REINSTALLING THE EXISTING FLAT TOP REDUCER.
9. EXCAVATIONS WITHIN 1.0m FROM THE OUTER EDGE OF WM TO THE NEAREST EDGE OF EXCAVATION ARE TO BE CONDUCTED WITHOUT HEAVY VIBRATORY EQUIPMENT. BOTH SAW CUTTING AND REMOVAL OR SOFT DIGGING ARE ACCEPTABLE MEANS OF EXCAVATION AT THESE LOCATIONS.

	HYDRANT		150 WM	WATERMAIN	150 WM		CONCRETE ROAD	
	VALVE		300 LDS	LAND DRAINAGE SEWER	300 LDS		ASPHALT ROAD	
	CURB STOP		250 WWS	WASTE WATER SEWER	250 WWS		CONC ROAD W/ASP OVERLAY	
	LIGHT STANDARD		HYDRO	HYDRO	HYDRO		CONCRETE SIDEWALK	
	HYDRO POLE		BELLMTS	BELLMTS	BELLMTS		ASPHALT PATH	
	TREE		100 GAS	GAS	100 GAS		LANDSCAPING FEATURE	
	GEODETIC BENCH MARK		T.S.	TRAFFIC SIGNALS	T.S.		GRASS/SOD	
	SURVEY BAR		S.L.	STREET LIGHTS	S.L.		ELEVATION	
	MANHOLE		TRAFFIC SIGNAL POLE	TRAFFIC SIGNAL POLE	TRAFFIC SIGNAL POLE		PROPERTY LINE	
	CATCH BASIN		PAVING STONE	PAVING STONE	PAVING STONE		CURB RAMP	
	CATCH PIT		CURB RENEWAL	CURB RENEWAL	CURB RENEWAL		DETECTABLE TILE	
EXISTING	LEGEND-PLAN	PROPOSED	EXISTING	LEGEND-PLAN	PROPOSED	EXISTING	LEGEND-PLAN	PROPOSED

<div>METRIC</div> <div>WHOLE NUMBERS INDICATE MILLIMETRES DECIMALIZED NUMBERS INDICATE METRES</div> <div><div><div><div></div><div></div><div></div></div><div>ENGINEERS GEOSCIENTISTS MANITOBA</div></div><div>Certificate of Authorization Dillon Consulting Limited (MB) No. 1789    Date: 2025/03/25</div></div>				<div>B.M. ELEV.</div> <table><tr><td></td><td></td><td></td><td></td></tr><tr><td></td><td></td><td></td><td></td></tr><tr><td></td><td></td><td></td><td></td></tr><tr><td></td><td></td><td></td><td></td></tr><tr><td></td><td></td><td></td><td></td></tr><tr><td></td><td></td><td></td><td></td></tr><tr><td></td><td></td><td></td><td></td></tr><tr><td></td><td></td><td></td><td></td></tr><tr><td>0</td><td>ISSUED FOR TENDER</td><td>25/03/25</td><td>LAS</td></tr><tr><td>NO.</td><td>REVISIONS</td><td>DATE</td><td>BY</td></tr></table>																																				0	ISSUED FOR TENDER	25/03/25	LAS	NO.	REVISIONS	DATE	BY	<div>DESIGNED BY    DRC</div> <div>DRAWN BY    DRC</div> <div>CHECKED BY    LAS</div> <div>APPROVED BY    TJP</div> <div>HOR. SCALE    AS NOTED</div> <div>VERTICAL    —</div> <div>DATE</div>		<div><div>DILLON CONSULTING</div></div> <div>RELEASED FOR CONSTRUCTION</div> <div>DATE</div>		<div>ENGINEER'S SEAL</div> <div>CONSULTANT PROJECT NUMBER 24-9227</div>		<div><div>THE CITY OF WINNIPEG</div><div>PUBLIC WORKS DEPARTMENT</div></div> <div><div>2025 RESIDENTIAL STREETS RENEWAL PROGRAM CROMWELL STREET AND VARIOUS OTHER LOCATIONS</div><div>LAKEWOOD BOULEVARD - DETAIL TRANSIT STOP IMPROVEMENT</div></div> <div><div>CITY DRAWING NUMBER</div><div>SHEET    OF B3    B5</div><div>TENDER NO.</div></div>			
0	ISSUED FOR TENDER	25/03/25	LAS																																																						
NO.	REVISIONS	DATE	BY																																																						



NOTES:

1. ALL WORK AND MATERIALS TO BE IN ACCORDANCE WITH LATEST REVISION OF THE CITY OF WINNIPEG STANDARD CONSTRUCTION SPECIFICATIONS.
2. LEGAL PLAN AND UNDERGROUND INFORMATION FROM CITY OF WINNIPEG LBIS. ALL UNDERGROUNDS TO BE VERIFIED BY THE CONTRACTOR IN THE FIELD.
3. CONTRACTOR TO TAKE PRECAUTIONARY STEPS TO AVOID DAMAGE FROM CONSTRUCTION ACTIVITIES TO TREES WITHIN THE LIMITS OF CONSTRUCTION.
4. LOCATION OF EXISTING SERVICES TO BE CONFIRMED IN THE FIELD BY THE CONTRACTOR.
5. LIMITS OF BOULEVARD GRADING TO BE FINALIZED IN THE FIELD BY THE CONTRACT ADMINISTRATOR.
6. ADJUST ALL WATER VALVES, MANHOLES, CATCH BASINS AND CATCH PITS TO GRADE.
7. PAVEMENT REPAIRS SHOWN ARE ONLY REPRESENTATIVE OF APPROXIMATION OF CONSTRUCTION.
8. CONTRACTOR TO INSTALL CONCRETE RISERS BY REMOVING THE EXISTING FLAT TOP REDUCER, PLACING RISERS AS DIRECTED BY THE CONTRACT ADMINISTRATOR AND THEN REINSTALLING THE EXISTING FLAT TOP REDUCER.
9. EXCAVATIONS WITHIN 1.0m FROM THE OUTER EDGE OF WM TO THE NEAREST EDGE OF EXCAVATION ARE TO BE CONDUCTED WITHOUT HEAVY VIBRATORY EQUIPMENT. BOTH SAW CUTTING AND REMOVAL OR SOFT DIGGING ARE ACCEPTABLE MEANS OF EXCAVATION AT THESE LOCATIONS.

	HYDRANT		150 WM	WATERMAIN	150 WM		CONCRETE ROAD
	VALVE		300 LDS	LAND DRAINAGE SEWER	300 LDS		ASPHALT ROAD
	CURB STOP		250 WWS	WASTE WATER SEWER	250 WWS		CONC ROAD W/ASP OVERLAY
	LIGHT STANDARD		HYDRO	HYDRO	HYDRO		CONCRETE SIDEWALK
	HYDRO POLE		BELLMTS	BELLMTS	BELLMTS		ASPHALT PATH
	TREE		100 GAS	GAS	100 GAS		LANDSCAPING FEATURE
	GEODETIC BENCH MARK		T.S.	TRAFFIC SIGNALS	T.S.		GRASS/SOD
	SURVEY BAR		S.L.	STREET LIGHTS	S.L.		ELEVATION
	MANHOLE		TRAFFIC SIGNAL POLE	TRAFFIC SIGNAL POLE	TRAFFIC SIGNAL POLE		PROPERTY LINE
	CATCH BASIN		PAVING STONE	PAVING STONE	PAVING STONE		CURB RAMP
	CATCH PIT		CURB RENEWAL	CURB RENEWAL	CURB RENEWAL		DETECTABLE TILE
EXISTING	LEGEND-PLAN	PROPOSED	EXISTING	LEGEND-PLAN	PROPOSED	EXISTING	LEGEND-PLAN

METRIC

WHOLE NUMBERS INDICATE MILLIMETRES  
DECIMALIZED NUMBERS INDICATE METRES

**ENGINEERS  
GEOSCIENTISTS  
MANITOBA**  
Certificate of Authorization  
Dillon Consulting Limited (MB)  
No. 1789 Date: 2025/03/25

B.M. ELEV.			
0	ISSUED FOR TENDER	25/03/25	LAS
NO.	REVISIONS	DATE	BY

DESIGNED BY	DRC
DRAWN BY	DRC
CHECKED BY	LAS
APPROVED BY	TJP
HOR. SCALE	1:500
VERTICAL	-
DATE	

RELEASED FOR CONSTRUCTION

DATE

ENGINEER'S SEAL

CONSULTANT PROJECT NUMBER  
24-9227

**THE CITY OF WINNIPEG**  
PUBLIC WORKS DEPARTMENT

2025 RESIDENTIAL STREETS RENEWAL PROGRAM  
CROMWELL STREET AND VARIOUS OTHER LOCATIONS

NIAKWA ROAD  
TRANSIT STOP IMPROVEMENT

CITY DRAWING NUMBER  
SHEET **B4** OF **B5**  
TENDER NO.

GENERAL CONSTRUCTION NOTES:

1. CITY OF WINNIPEG TRANSIT DEPARTMENT WILL BE RESPONSIBLE TO INSTALL TRANSIT SHELTERS.
2. CONTRACTOR RESPONSIBLE TO "MAKE GOOD" AND CLEAN SITE, REPAIR DAMAGED SOD, ETC. AT COMPLETION OF CONSTRUCTION.

GENERAL CONCRETE NOTES:

3. ALL DIMENSIONS SHALL BE CHECKED AND VERIFIED PRIOR TO COMMENCING CONSTRUCTION.
4. CONFIRM THE LOCATION OF ALL SUBGRADE SERVICES PRIOR TO COMMENCING SITE WORK.
5. EXCAVATE ALL TOPSOIL, ORGANIC MATERIAL AND LOOSE OR UNSUITABLE FILL TO THE APPROVAL OF THE CONTRACT ADMINISTRATOR.
6. EXCAVATE BELOW SLABS ON FILL TO PROVIDE A MINIMUM OF 150 mm OF GRANULAR. FILL SHALL BE COMPACTED TO 95% MODIFIED PROCTOR DENSITY.
7. CONSTRUCTION JOINT LOCATIONS ARE TO BE APPROVED BY THE CONTRACT ADMINISTRATOR.
8. ALL CONCRETE PILES AND BASES TO BE REVIEWED AND APPROVED BY SIGNAGE & SHELTER MANUFACTURERS' STRUCTURAL ENGINEER PRIOR TO CONSTRUCTION. CONTRACTOR TO MAKE ANY CHANGES REQUIRED AT NO EXTRA COST.

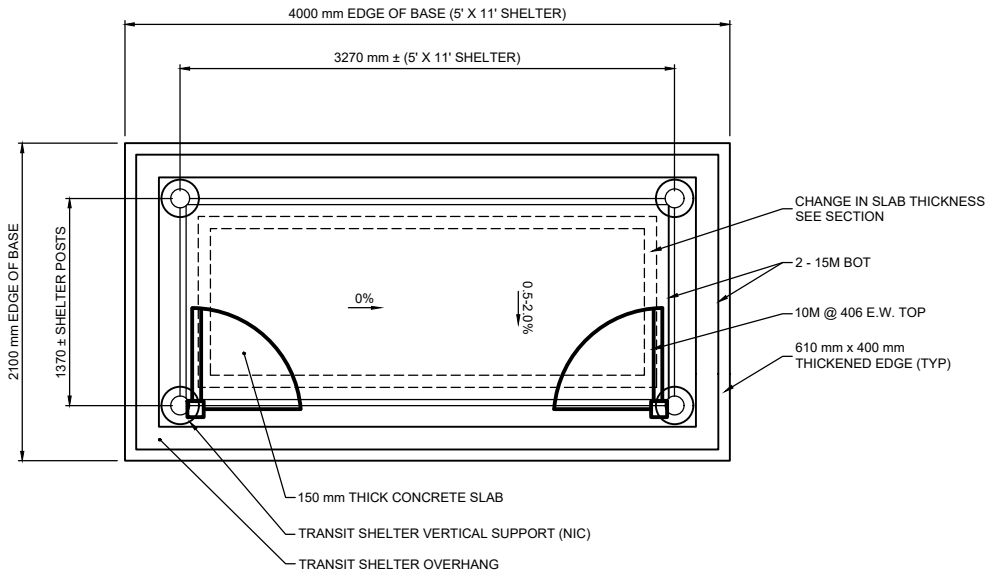
REINFORCING NOTES:

9. PERFORM CONCRETE WORK IN ACCORDANCE WITH CAN3-A23.3-M84 UNLESS INDICATED OTHERWISE.
10. ALL REINFORCING BARS SHALL BE DEFORMED BARS WITH A MINIMUM SPECIFIED YIELD STRENGTH 400MPa FOR 20M BARS AND 300MPa FOR 15M AND 10M BARS IN ACCORDANCE WITH CAN-630.18-M92.
11. COVER TO REINFORCING: SLABS 50 mm CLEAR TOP AND BOTTOM.
12. BEFORE PLACING ENSURE REINFORCING IS CLEAN, FREE OF LOOSE SCALE, DIRT, OR OTHER FOREIGN COATING WHICH WOULD REDUCE THE BOND TO CONCRETE.
13. SHOP DRAWINGS SHALL BE SUBMITTED WHICH CLEARLY INDICATE BAR SIZES, SPACINGS, LOCATIONS AND QUANTITIES OF REINFORCING STEEL AND WIRE FABRIC, BENDING AND CUTTING SCHEDULES, AND SUPPORTING AND SPACING DEVICES FOR REVIEW PRIOR TO FABRICATION OF THE REINFORCING STEEL. DETAIL IN ACCORDANCE WITH THE LATEST ACI DETAILING MANUAL.

CONCRETE NOTES:

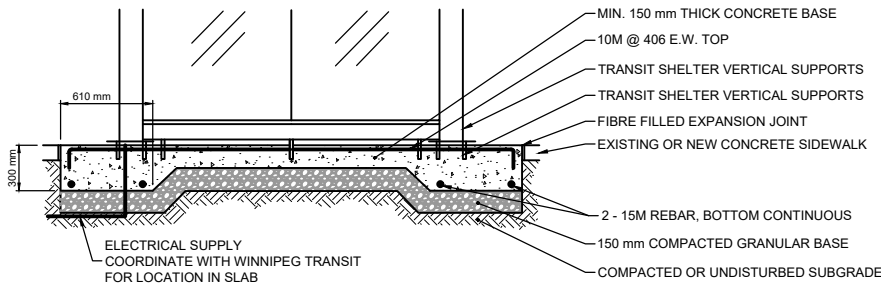
14. ALL CONCRETE WORK SHALL BE IN ACCORDANCE WITH CAN3-A23.1-M90 - CONCRETE CONSTRUCTION.
15. PROPORTION NORMAL DENSITY CONCRETE IN ACCORDANCE WITH CAN-A23.1-M90. REFER TO SPECIFICATION FOR DESIGN MIXES.

16. CONSTRUCT FORMWORK, SHORING AND BRACING TO MEET DESIGN, CODE AND CAN3-A23.1-M90 REQUIREMENTS, ACCURATELY, SO THAT RESULTANT FINISHED CONCRETE CONFORMS TO SHAPES, LINES AND DIMENSIONS INDICATED ON THE DRAWINGS.
17. CONSTRUCTION JOINTS, OUR SCHEDULING AND WORK PROCEDURES SHALL BE DISCUSSED WITH THE CONTRACT ADMINISTRATOR PRIOR TO COMMENCING CONSTRUCTION.
18. FOR COLD WEATHER CONCRETING, ALL ICE, SNOW AND FROST SHALL BE REMOVED FROM FORMWORK AND THE TEMPERATURES OF ALL CONTRACT SURFACES SHALL BE RAISED ABOVE 10°C FOR 24 HOURS PRIOR TO CASTING CONCRETE SHALL BE NOT LESS THAN 20C NOR MORE THAN 5C FOR AN ADDITIONAL 4 DAYS.
19. NOTIFY THE CONTRACT ADMINISTRATOR 48 HOURS PRIOR TO POURING CONCRETE.
20. THREE CONCRETE TEST CYLINDERS AND ONE SLUMP TEST SHALL BE TAKEN FOR EVERY 75 CUBIC METERS OF EACH CLASS OF CONCRETE PLACED OR FOR EACH DAY OF CONCRETE PLACEMENT IF THE LATTER IS LESS THAN 75 CUBIC METERS. TESTING SHALL BE PERFORMED IN ACCORDANCE WITH CAN3-A23.1-M90.



- NOTE:
1. CONFIRM FINAL CROSS SLOPE WITH CONTRACT ADMINISTRATOR PRIOR TO LAYOUT. CONTRACTOR TO REPORT ANY DISCREPANCIES TO CONTRACT ADMINISTRATOR PRIOR TO CONSTRUCTION.
  2. CONTRACTOR TO VERIFY EXACT DIMENSIONS OF SHELTER PRIOR TO LAYOUT WITH SHELTER MANUFACTURER. CONTRACT ADMINISTRATOR TO SUPPLY CONTACT INFORMATION.

**SHELTER BASE FOR TRANSIT BUS PAD**  
SCALE: 1:25



**SHELTER BASE SECTION**  
SCALE: 1:25

NOTES:

1. ALL WORK AND MATERIALS TO BE IN ACCORDANCE WITH LATEST REVISION OF THE CITY OF WINNIPEG STANDARD CONSTRUCTION SPECIFICATIONS.
2. LEGAL PLAN AND UNDERGROUND INFORMATION FROM CITY OF WINNIPEG LBIS. ALL UNDERGROUNDS TO BE VERIFIED BY THE CONTRACTOR IN THE FIELD.
3. CONTRACTOR TO TAKE PRECAUTIONARY STEPS TO AVOID DAMAGE FROM CONSTRUCTION ACTIVITIES TO TREES WITHIN THE LIMITS OF CONSTRUCTION.
4. LOCATION OF EXISTING SERVICES TO BE CONFIRMED IN THE FIELD BY THE CONTRACTOR.
5. LIMITS OF BOULEVARD GRADING TO BE FINALIZED IN THE FIELD BY THE CONTRACT ADMINISTRATOR.
6. ADJUST ALL WATER VALVES, MANHOLES, CATCH BASINS AND CATCH PITS TO GRADE.
7. PAVEMENT REPAIRS SHOWN ARE ONLY REPRESENTATIVE OF APPROXIMATION OF CONSTRUCTION.
8. CONTRACTOR TO INSTALL CONCRETE RISERS BY REMOVING THE EXISTING FLAT TOP REDUCER, PLACING RISERS AS DIRECTED BY THE CONTRACT ADMINISTRATOR AND THEN REINSTALLING THE EXISTING FLAT TOP REDUCER.
9. EXCAVATIONS WITHIN 1.0m FROM THE OUTER EDGE OF WM TO THE NEAREST EDGE OF EXCAVATION ARE TO BE CONDUCTED WITHOUT HEAVY VIBRATORY EQUIPMENT. BOTH SAW CUTTING AND REMOVAL OR SOFT DIGGING ARE ACCEPTABLE MEANS OF EXCAVATION AT THESE LOCATIONS.

+	HYDRANT	+	150 WM	WATERMAIN	150 WM	CONCRETE ROAD	
⊙	VALVE	⊙	300 LDS	LAND DRAINAGE SEWER	300 LDS	ASPHALT ROAD	
⌋	CURB STOP	⌋	250 WWS	WASTE WATER SEWER	250 WWS	CONC ROAD W/ASP OVERLAY	
⊙	LIGHT STANDARD	⊙	HYDRO	HYDRO	HYDRO	CONCRETE SIDEWALK	
⊙	HYDRO POLE	⊙	BELLMTS	BELLMTS	BELLMTS	ASPHALT PATH	
⊙	TREE	⊙	100 GAS	GAS	100 GAS	LANDSCAPING FEATURE	
⊙	GEODETIC BENCH MARK	⊙	T.S.	TRAFFIC SIGNALS	T.S.	GRASS/SOD	
⊙	SURVEY BAR	⊙	S.L.	STREET LIGHTS	S.L.	ELEVATION	(232.000)
⊙	MANHOLE	⊙	⊙	TRAFFIC SIGNAL POLE	⊙	PROPERTY LINE	
⊙	CATCH BASIN	⊙	PAVING STONE	PAVING STONE	PAVING STONE	CURB RAMP	
⊙	CATCH PIT	⊙	CURB RENEWAL	CURB RENEWAL	CURB RENEWAL	DETECTABLE TILE	
EXISTING	LEGEND—PLAN	PROPOSED	EXISTING	LEGEND—PLAN	PROPOSED	EXISTING	LEGEND—PLAN

METRIC

WHOLE NUMBERS INDICATE MILLIMETRES  
DECIMALIZED NUMBERS INDICATE METRES

**ENGINEERS  
GEOSCIENTISTS  
MANITOBA**

Certificate of Authorization  
Dillon Consulting Limited (MB)  
No. 1789 Date: 2025/03/25

B.M. ELEV.	NO.	REVISIONS	DATE	BY
	0	ISSUED FOR TENDER	25/03/25	LAS

DESIGNED BY	DRC
DRAWN BY	DRC
CHECKED BY	LAS
APPROVED BY	TJP
HOR. SCALE	AS NOTED
VERTICAL	—
DATE	

**DILLON  
CONSULTING**

RELEASED FOR CONSTRUCTION

DATE

ENGINEER'S SEAL
CONSULTANT PROJECT NUMBER
24-9227

**THE CITY OF WINNIPEG**  
PUBLIC WORKS DEPARTMENT

2025 RESIDENTIAL STREETS RENEWAL PROGRAM  
CROMWELL STREET AND VARIOUS OTHER LOCATIONS

NIAKWA ROAD - DETAIL  
TRANSIT STOP IMPROVEMENT

CITY DRAWING NUMBER

SHEET B5 OF B5

TENDER NO.