

MCC-B7002
2BH2
STARTER COMPARTMENT

2BH2 POWER CONNECTION

T1 RD
T2 BK
T3 BL

2BH2 LOCK OUT SWITCH

TB01

1 2BH2-1
2 2BH2-2
3 2BH2-1
4 2BH2-2
5 2BH2-3
6 2BH2-4
7
8 2BH2-5
X2 2BH2-6

RUN STATUS

TB02

200 2BH2-200
201 2BH2-201

1x3C 12AWG TECK90 1kV
C-2BH2-1

EXISTING
(NOTE 5 TYP.)

2BH2-LOS (NOTE 3 TYP.)

XX

2BH2-1 1
2BH2-2 2

2BH2 LOCK-OUT SWITCH

LCP-2BH2

XX

2BH2-1 1
2BH2-2 2
2BH2-3 3
2BH2-4 4
2BH2-5 5
2BH2-6 6

HS-2BH2-01 CONTROL CIRCUIT
RED RUN LIGHT

EXISTING
-

CP-B8001

XX

2BH2-200 1
2BH2-201 2

RUN STATUS

CONTROL ROOM

1 REF.2 (NOTE 7)

1

WHERE FIELD CONDITIONS NECESSITATE AN EXTENSION TO EXISTING CABLES IN ORDER TO REACH NEW MCC, SEE REFERENCE DRAWING 2.

2BH2 BOILER 2 BLOWER

M

AØ
BØ
CØ


JB

EXISTING

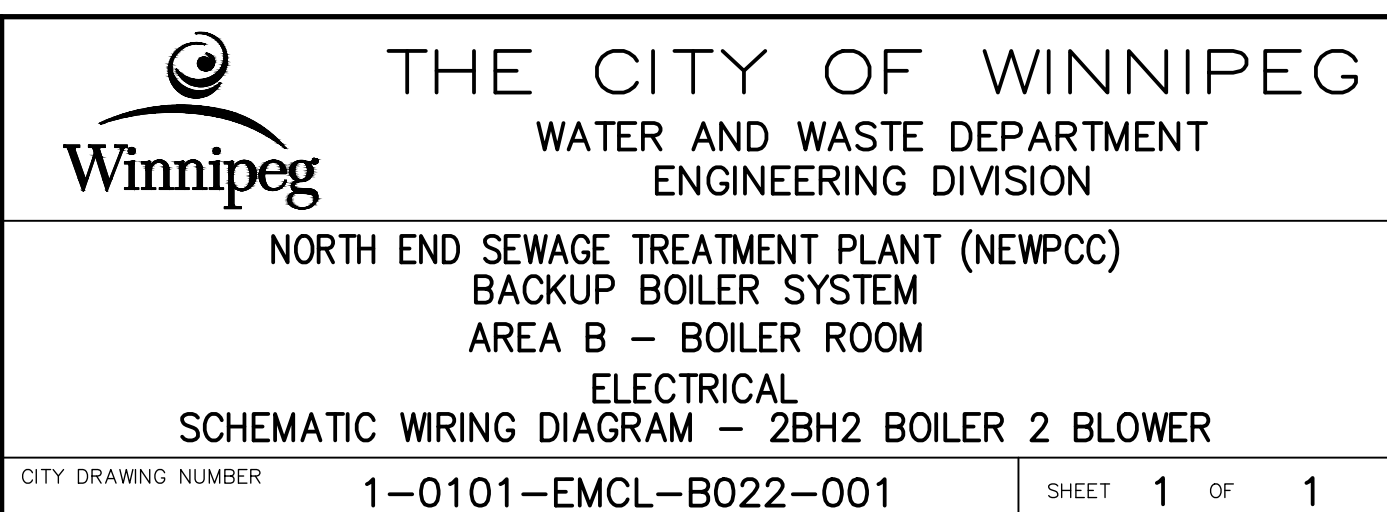
1. LOCK-OUT SWITCH LOCATED AT MOTOR.
2. EXISTING HAND AND CONTROL CONTACTS AT LOCAL CONTROL PANEL.
3. PRIOR TO DEMOLITION LOCAL CONTROL PANEL TERMINALS TO BE VERIFIED BY CONTRACTOR DURING INSTALLATION.
4. TO PLC DISCRETE INPUT. TERMINAL BLOCK NUMBERS TO COORDINATE WITH DCS MIGRATION PROJECT.
5. PRIOR TO DEMOLITION FIELD CABLE TAGS TO BE VERIFIED BY CONTRACTOR DURING INSTALLATION.
6. GREY LINETYPE DENOTES EXISTING. ENGINEER'S SEAL APPLIES TO NEW WORKS ONLY.
7. WHERE FIELD CONDITIONS NECESSITATE AN EXTENSION TO EXISTING CABLES IN ORDER TO REACH NEW MCC, SEE REFERENCE DRAWING 2.

10	—	—
9	—	—
8	—	—
7	—	—
6	—	—
5	—	—
4	—	—
3	—	—
2	1-0101-EMCL-B034-001	ELECTRICAL – SCHEMATIC WIRING DIAGRAM DETAILS – TYPICAL EXISTING WIRING
1	1-0101-ESLD-B002-001	ELECTRICAL – MCC-B7002 SINGLE LINE DIAGRAM
NO.	DRAWING NUMBER	REFERENCE DRAWING TITLE
REFERENCE DRAWINGS		

[illegible]

			
DESIGNED BY	AMS	CHECKED BY	CLR
DRAWN BY	FA	APPROVED BY	CLR
SCALE:	N.T.S.	RELEASED FOR CONSTRUCTION	
DATE:	2025.03.26	DATE:	

CONSULTANT DRAWING NUMBER	23-0107-010_PB_E2-22
BID OPPORTUNITY:	277-2025
CONTRACT NUMBER:	



PLOT DATE: 2025 04 30

BID OPPORTUNITY: 277-2025
CONTRACT NUMBER:

FILE PATH: R:\Projects\2023\23-0107-010\Dwg\Elec\2_PermBoiler\
FILE NAME: 1-0101-FMCI-R022-001.DWG