

[illegible]

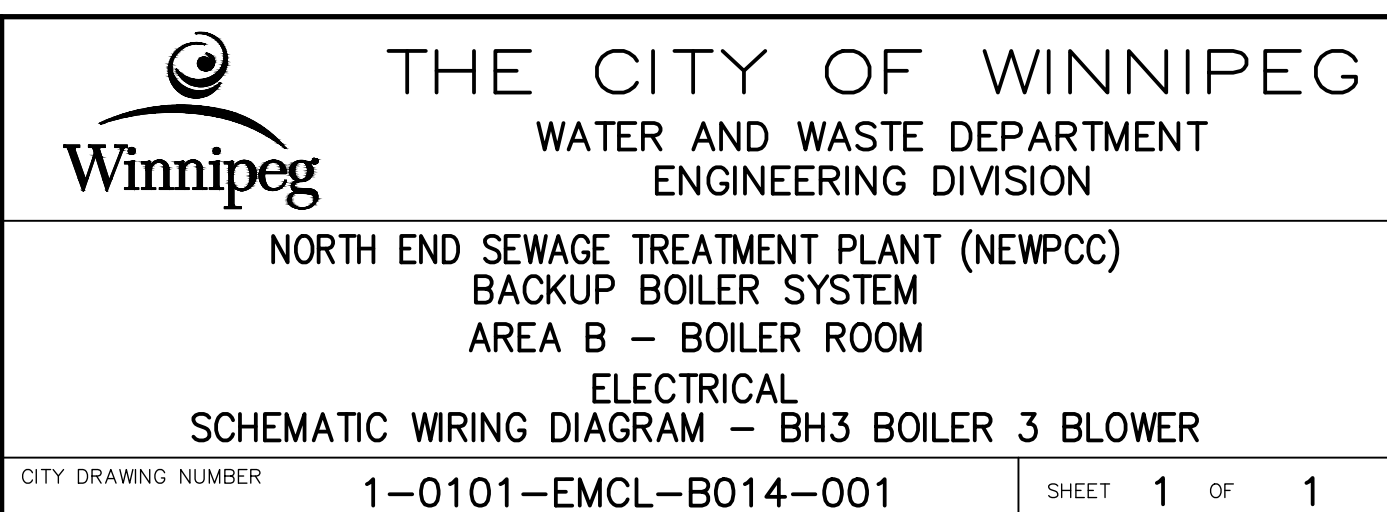
1. LOCK-OUT SWITCH LOCATED AT MOTOR.
2. EXISTING HAND AND CONTROL CONTACTS AT LOCAL CONTROL PANEL.
3. PRIOR TO DEMOLITION LOCAL CONTROL PANEL TERMINALS TO BE VERIFIED BY CONTRACTOR DURING INSTALLATION.
4. TO PLC DISCRETE INPUT. TERMINAL BLOCK NUMBERS TO COORDINATE WITH DCS MIGRATION PROJECT.
5. PRIOR TO DEMOLITION FIELD CABLE TAGS TO BE VERIFIED BY CONTRACTOR DURING INSTALLATION.
6. GREY LINETYPE DENOTES EXISTING. ENGINEER'S SEAL APPLIES TO NEW WORKS ONLY.
7. WHERE FIELD CONDITIONS NECESSITATE AN EXTENSION TO EXISTING CABLES IN ORDER TO REACH NEW MCC, SEE REFERENCE DRAWING 2.

10	—	—
9	—	—
8	—	—
7	—	—
6	—	—
5	—	—
4	—	—
3	—	—
2	1-0101-EMCL-B034-001	ELECTRICAL – SCHEMATIC WIRING DIAGRAM DETAILS – TYPICAL EXISTING WIRING
1	1-0101-ESLD-B001-001	ELECTRICAL – MCC-B7001 SINGLE LINE DIAGRAM
NO.	DRAWING NUMBER	REFERENCE DRAWING TITLE
REFERENCE DRAWINGS		

[illegible]

<div>KGS GROUP</div>				
DESIGNED BY		AMS	CHECKED BY	CLR
DRAWN BY		FA	APPROVED BY	CLR
SCALE:		N.T.S.	RELEASED FOR CONSTRUCTION	
DATE:		2025 03 26	DATE:	

CONSULTANT DRAWING NUMBER	23-0107-010_PB_E2-14
BID OPPORTUNITY:	277-2025
CONTRACT NUMBER:	



PLOT DATE:	2025 04 30
------------	------------

BID OPPORTUNITY: 277-2025

FILE PATH: R:\Projects\2023\23-0107-010\Dwg\Elec\2\_PermBoiler\  
FILE NAME: 1-0101-FMCI-R014-001.DWG