

[illegible]


The diagram illustrates the electrical connections between the MCC-B7001 BF23A Starter Compartment and the Control Room. The Starter Compartment includes a power connection block (T1, T2, T3) with terminals RD, BK, and BL, a lock-out switch (TB01) with terminals 1, 2, 3, 4, 5, 6, and X2, and a run status block (TB02) with terminals 200 and 201. The Control Room contains a BF23A Lock-Out Switch (XX) with terminals 1 and 2, an HS-BF23A-01 Control Circuit (XX) with terminals 1, 2, 3, and 4, and a Run Status block (XX) with terminals 1 and 2. The diagram also shows a 1x3C 12AWG TECK90 1kV cable (C-BF23A-1) connecting the Starter Compartment to the Control Room. A note indicates that the diagram is a typical representation (NOTE 2 TYP.) and that the connections are as shown (NOTE 4 TYP.). A warning symbol (triangle with exclamation mark) is present at the bottom right.

1. LOCK-OUT SWITCH LOCATED AT MOTOR.
2. PRIOR TO DEMOLITION LOCAL CONTROL PANEL TERMINALS TO BE VERIFIED BY CONTRACTOR DURING INSTALLATION.
3. TO PLC DISCRETE INPUT. TERMINAL BLOCK NUMBERS TO COORDINATE WITH DCS MIGRATION PROJECT.
4. PRIOR TO DEMOLITION FIELD CABLE TAGS TO BE VERIFIED BY CONTRACTOR DURING INSTALLATION.
5. GREY LINETYPE DENOTES EXISTING. ENGINEER'S SEAL APPLIES TO NEW WORKS ONLY.
6. WHERE FIELD CONDITIONS NECESSITATE AN EXTENSION TO EXISTING CABLES IN ORDER TO REACH NEW MCC, SEE REFERENCE DRAWING 2.

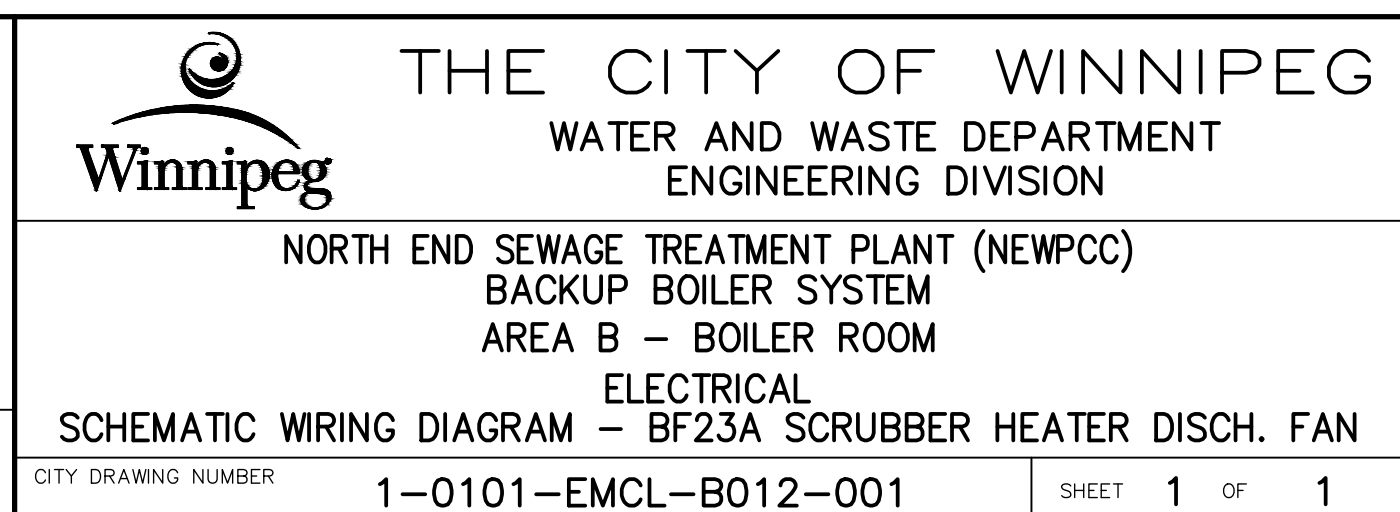
10	—	—
9	—	—
8	—	—
7	—	—
6	—	—
5	—	—
4	—	—
3	—	—
2	1-0101-EMCL-B034-001	ELECTRICAL – SCHEMATIC WIRING DIAGRAM DETAILS – TYPICAL EXISTING WIRING
1	1-0101-ESLD-B001-001	ELECTRICAL – MCC-B7001 SINGLE LINE DIAGRAM
NO.	DRAWING NUMBER	REFERENCE DRAWING TITLE
REFERENCE DRAWINGS		



B.M.			
ELEV.			
CONSTRUCTION COMPLETION DATE: YYYY MM DD			
1	RE-ISSUED FOR CONSTRUCTION	2025	04 30
0	ISSUED FOR CONSTRUCTION	2025	03 25 CLR
NO.	REVISIONS	DATE	BY

		DESIGNED BY	AMS	CHECKED BY	CLR
		DRAWN BY	FA	APPROVED BY	CLR
		SCALE:	N.T.S.	RELEASED FOR CONSTRUCTION	
		DATE:	2025 03 26	DATE:	

ENGINEER'S SEAL
CONSULTANT DRAWING NUMBER
23-0107-010_PB_E2-12



PLOT DATE: 2025 04 30

BID OPPORTUNITY: 277-2025
CONTRACT NUMBER:

FILE PATH: R:\Projects\2023\23-0107-010\Dwg\Elec\2_PermBoiler\
FILE NAME: 1-0101-EMCL-B012-001.DWG