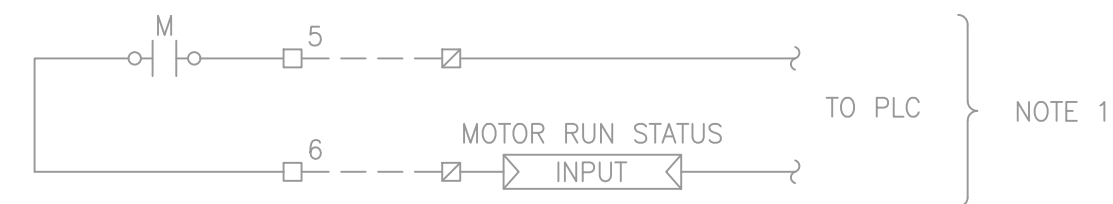


[illegible]

1x3C #12AWG TECK90 1kV

MCC-B7001
P-B0140
BREAKER COMPARTMENT

P-B0140 POWER CONNECTION

T1 RD
T2 BK
T3 BL

EXISTING

JB

MSP-B0140
PUMP MOTOR STARTER
PANEL

XX

X
X
X

1

HS-1BF20-01
CONTROL OFF HAND
HAND

XX=2
XX=3

RED RUN LIGHT

TB03
300 P-B0140-200
301 P-B0140-201

RUN STATUS

EXISTING

EXISTING

EXISTING

CP-B8001

?

1BF20-200
1BF20-201

?

?

?

?

RUN STATUS
XX=2
XX=3


CONTROL ROOM


P-B0140 BOILER 7 CIRCULATION PUMP

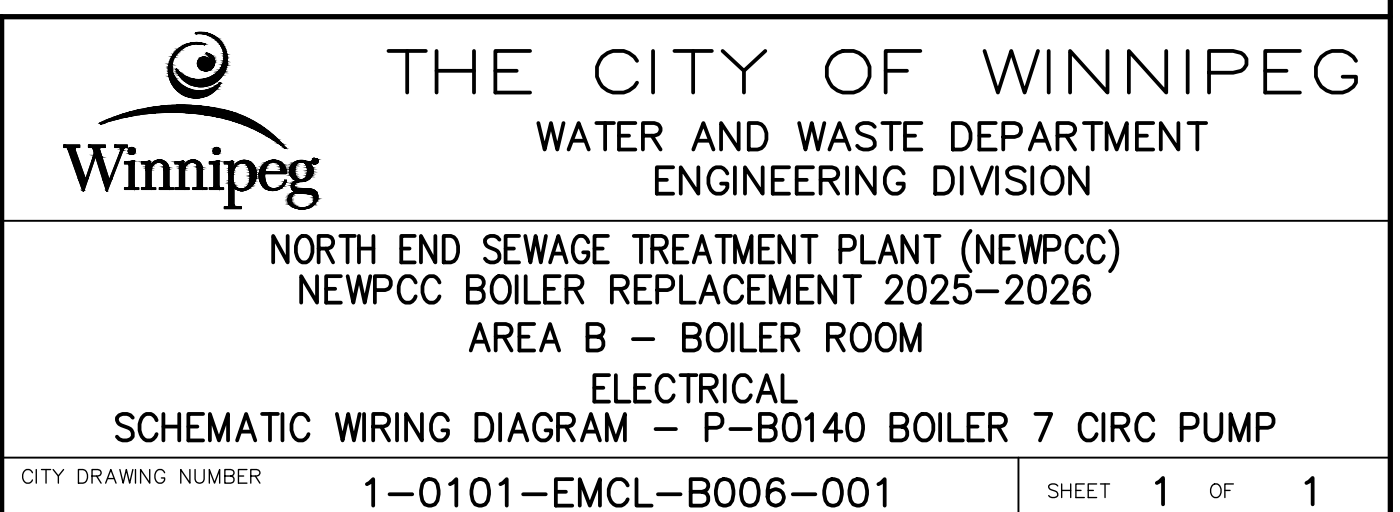
1. TO PLC DISCRETE INPUT, TERMINAL BLOCK NUMBERS TO COORDINATE WITH PCS MIGRATION PROJECT.
2. PRIOR TO RELOCATION FIELD CABLE TAGS TO BE VERIFIED BY CONTRACTOR DURING INSTALLATION.
3. PRIOR TO RELOCATION, LOCAL MOTOR PANEL TERMINALS TO BE VERIFIED BY CONTRACTOR DURING INSTALLATION.

10	—	—
9	—	—
8	—	—
7	—	—
6	—	—
5	—	—
4	—	—
3	—	—
2	—	—
1	1-0101-ESLD-B001-001	ELECTRICAL - MCC-B7001 SINGLE LINE DIAGRAM
NO.	DRAWING NUMBER	REFERENCE DRAWING TITLE
REFERENCE DRAWINGS		

[illegible]

		DESIGNED BY	AMS	CHECKED BY	CLR
		DRAWN BY	FA	APPROVED BY	CLR
		SCALE:	N.T.S.	RELEASED FOR CONSTRUCTION	
		DATE:	2025.02.21	DATE:	

	<p>ENGINEER'S SEAL</p>
<p>CONSULTANT DRAWING NUMBER</p>	<p>23-0107-010_E2-06</p>



PLOT DATE: 2025 04 30

BID OPPORTUNITY: 277-2025
CONTRACT NUMBER:

FILE PATH: \\kgs-file\r-data\Projects\2023\23-0107-010\Dwg\Elec\2_PermBoiler\
FILE NAME: 1-0101-EMCL-B006-001.DWG