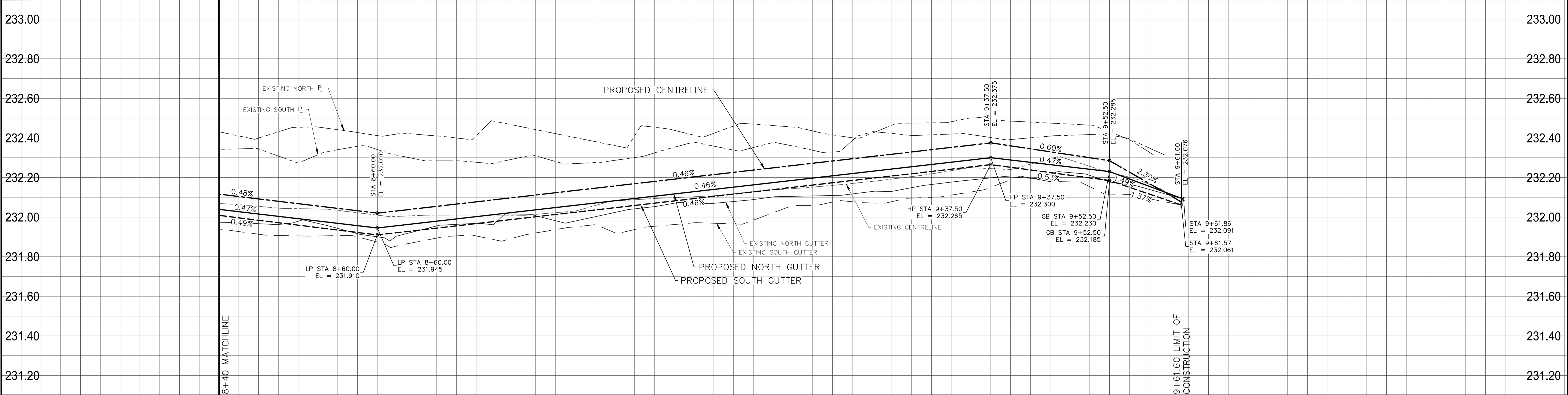
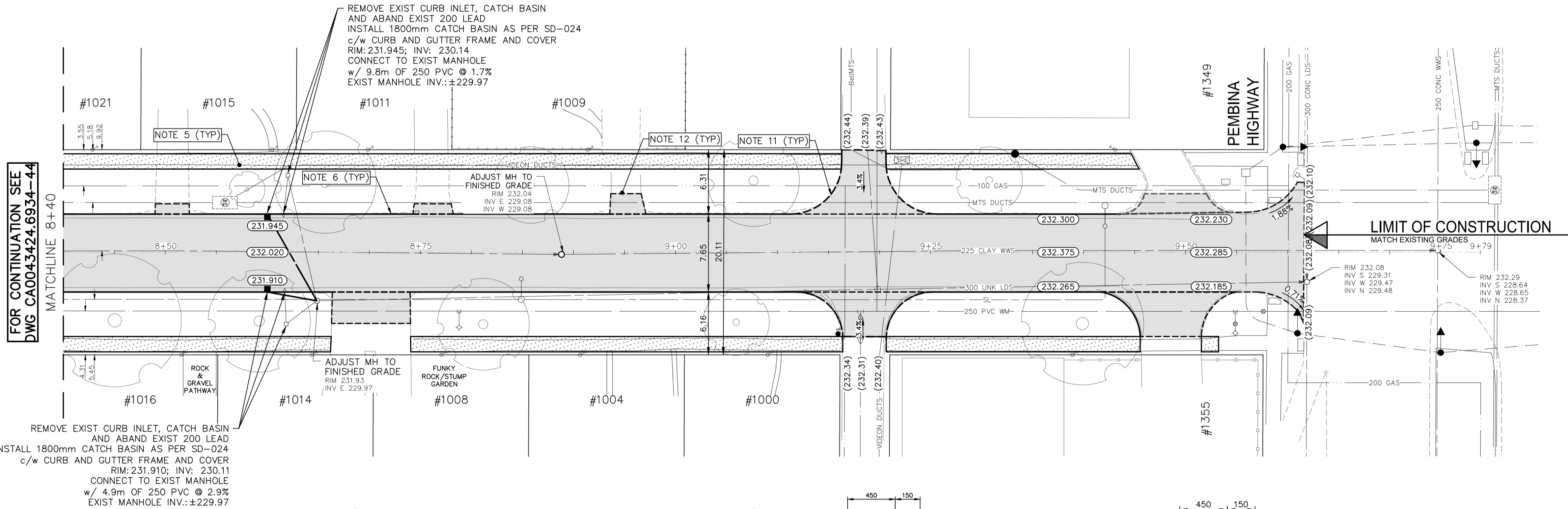
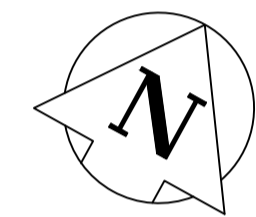


Mar 27, 2025 — 5:47pm
P:\2024\CA0043424.6934 - CA-25-R-04 Local Streets\02 Drawings\03_Work_Dwg CA0043424.6934_CA_25-R-04_Waller_Plan&Profile.dwg -tab:230-2025_Drawing_CA0043424.6934-45-R0

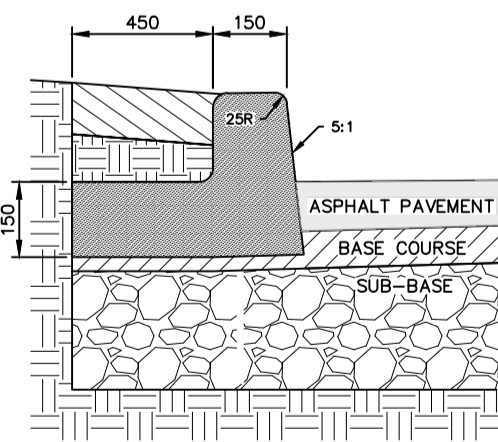
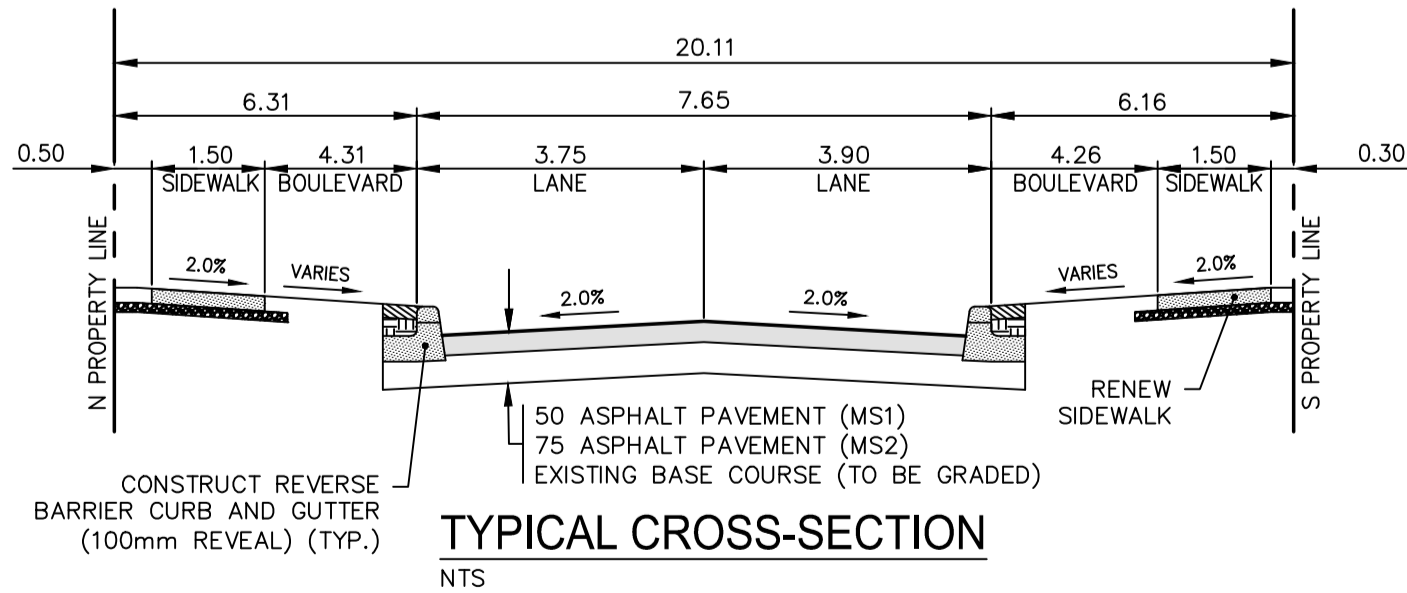


WALLER AVENUE

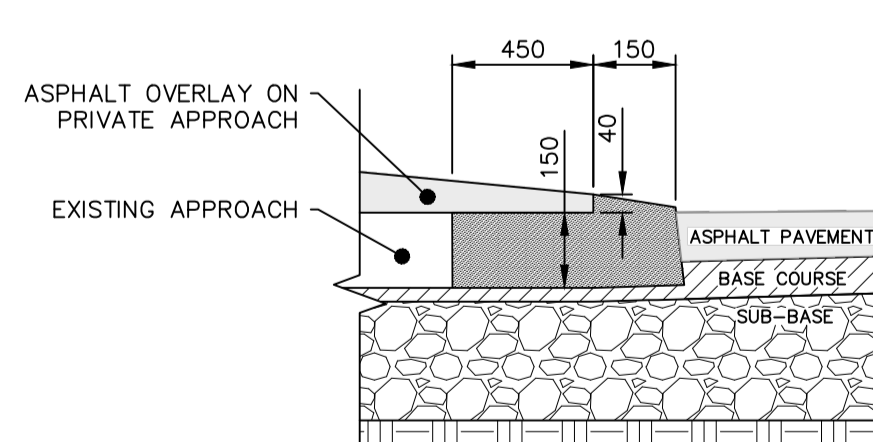


NOTES:

1. ALL WORK AND MATERIALS TO BE IN ACCORDANCE WITH THE LATEST REVISION OF THE CITY OF WINNIPEG STANDARD CONSTRUCTION SPECIFICATIONS.
2. CONTRACTOR TO CONFIRM THE LOCATION OF ALL UTILITIES/SERVICES IN THE FIELD PRIOR TO CONSTRUCTION.
3. ALL ROADWAY DIMENSIONS SHOWN ARE TO BACK OF CURB.
4. EXISTING ASPHALT TO BE PLANED AS SHOWN OR AS DIRECTED BY CONTRACT ADMINISTRATOR.
5. EXISTING SIDEWALK TO BE RENEWED AS PER SD-228A AND AS DIRECTED BY CONTRACT ADMINISTRATOR.
6. REMOVE EXISTING CURB AND CONSTRUCT BARRIER CURB AS DIRECTED BY CONTRACT ADMINISTRATOR.
7. FULL DEPTH ASPHALT PATCHING TO BE COMPLETED AS DIRECTED BY CONTRACT ADMINISTRATOR.
8. ALL PRIVATE WALKWAYS TO BE ADJUSTED TO NEW SIDEWALK OR TOP OF CURB ELEVATION, AS DIRECTED BY THE CONTRACT ADMINISTRATOR.
9. EXISTING LIP CURB AT PRIVATE APPROACHES TO BE RENEWED AS DIRECTED BY CONTRACT ADMINISTRATOR.
10. PAVEMENT REPAIR FABRIC TO BE INSTALLED AS SHOWN OR AS DIRECTED BY CONTRACT ADMINISTRATOR.
11. MODIFIED BARRIER CURB TO BE CONSTRUCTED AT ALL INTERSECTION RADI AND ALLEY RADI.
12. OVERLAY CONCRETE AND ASPHALT RESIDENTIAL APPROACHES AS DIRECTED BY CONTRACT ADMINISTRATOR.
13. CONTRACTORS TO TAKE PRECAUTIONARY STEPS TO PROTECT EXISTING TREES WITHIN THE LIMITS OF CONSTRUCTION FROM DAMAGE FROM CONSTRUCTION ACTIVITIES AS OUTLINED IN THE SPECIFICATIONS.
14. LAMP STANDARDS, HYDRO POLES, AND ANCHORS THAT REQUIRE TEMPORARY SUPPORT, REMOVAL OR REPLACEMENT, TO BE DONE SO AT THE EXPENSE OF THE CONTRACTOR AS NECESSARY.
15. ALL BOULEVARDS TO BE SODDED UNLESS OTHERWISE NOTED.
16. ADJUST ALL WATER VALVES, HYDRANTS, MANHOLES, AND CATCH BASINS IN WORK AREA TO GRADE.



DETAIL 'A' - REVERSE BARRIER CURB AND GUTTER
NTS



DETAIL 'B' - REVERSE LIP CURB AND GUTTER
NTS

FOR TENDER PURPOSES ONLY

NOT FOR CONSTRUCTION

METRIC

WHOLE NUMBERS INDICATE MILLIMETRES
DECIMALIZED NUMBERS INDICATE METRES

**ENGINEERS
GEOSCIENTISTS
MANITOBA**
Certificate of Authorization
WSP Canada Inc.
No. 5750

---	WATER MAIN	---	⊗	---	VALVE	---	⊗
---	LAND DRAINAGE SEWER	---	⊗	---	CURB STOP	---	⊗
---	WASTE WATER SEWER	---	---	---	HYDRO POLE & LIGHT STANDARD	---	---
---	HYDRO	---	HP	---	LIGHT STANDARD OR TRAFFIC SIGNAL	---	---
---	GAS	---	HP	---	HYDRO POLE / ANCHOR	---	---
---	COMMUNICATIONS	---	---	---	FENCE	---	---
---	SIGNALS	---	---	---	PROPERTY LINE	---	---
○	MANHOLE	●	⊕	---	IRON BAR	---	---
□	CATCH BASIN/CATCH PIT	■	⊕	---	TEST HOLE / PAVEMENT CORE	---	---
△	CURB INLET	▼	(231.00)	---	ELEVATIONS	---	(231.000)
◇	UTILITIES ADJUSTED	△ ○	---	---	CURB RAMP	---	---
◇	HYDRANT	◆	---	---	DETECTABLE WARNING SURFACE TILE	---	---
EXISTING	LEGEND-PLAN	PROPOSED	EXISTING	LEGEND-PLAN	PROPOSED	EXISTING	LEGEND-PLAN

LOCATIONS APPROVED UNDERGROUND STRUCTURES	
SIGNED BY: SUPV U/D STRUCTURES	DATE
LOCATION OF UNDERGROUND STRUCTURES AS SHOWN ARE BASED ON THE BEST INFORMATION AVAILABLE BUT NO GUARANTEE IS GIVEN THAT ALL EXISTING UTILITIES ARE SHOWN OR THAT THE GIVEN LOCATIONS ARE EXACT CONFIRMATION OF EXISTENCE AND EXACT LOCATION OF ALL SERVICES MUST BE OBTAINED FROM THE INDIVIDUAL UTILITIES BEFORE PROCEEDING	

G.B.M. ELEV.	TOH AT 1348 WALLER AVE 232.985
7	
6	
5	
4	
3	
2	
1	
0	ISSUED FOR TENDER
NO.	REVISIONS

DESIGNED BY R.H./G.Z.	CHECKED BY R.H.
DRAWN BY K.C./W.D.	APPROVED BY S.M.
HOR. SCALE VERTICAL	RELEASED FOR CONSTRUCTION
1:250 1:10	
DATE JANUARY 2025	DATE

WSP Canada Inc. 1600 Buffalo Place Winnipeg, MB R3T 6B8 t. 204.477.6650 f. 204.474.2864 www.wsp.com
--

ENGINEER'S SEAL
CONSULTANT ACAD DWG. NO. CA0043424.6934-45

THE CITY OF WINNIPEG PUBLIC WORKS DEPARTMENT ENGINEERING SERVICES DIVISION
2025 LOCAL STREET RENEWALS WALLER AVENUE
MAJOR REHABILITATION STA. 8+40 TO STA. 9+61.60

Winnipeg

CITY DRAWING NUMBER
SHEET 45 OF 47
TENDER NO. 230-2025