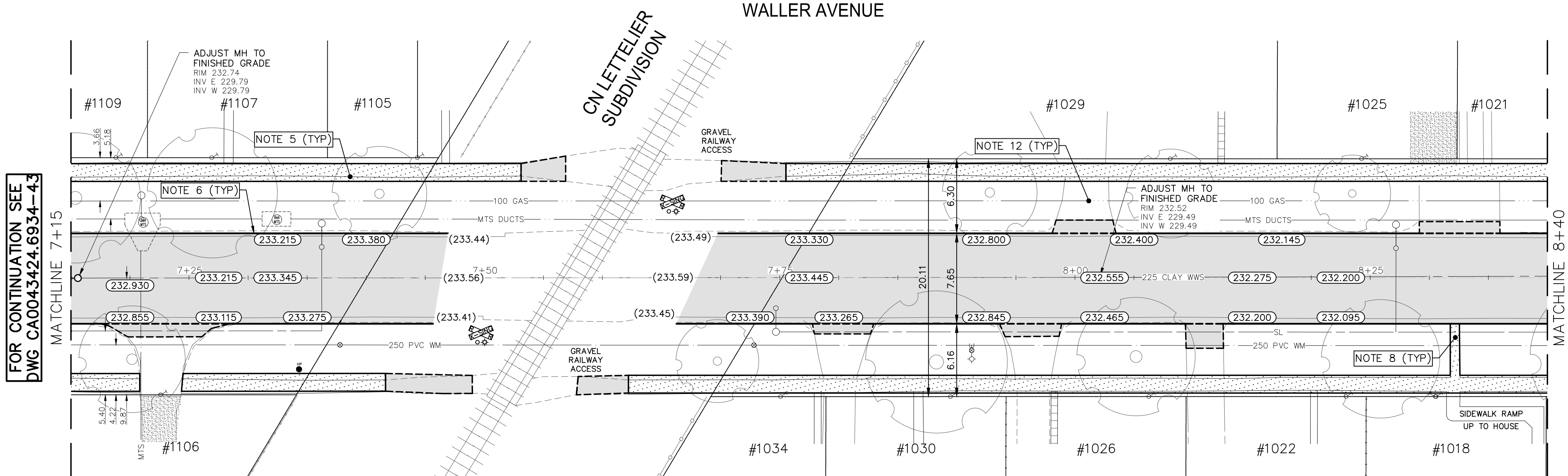
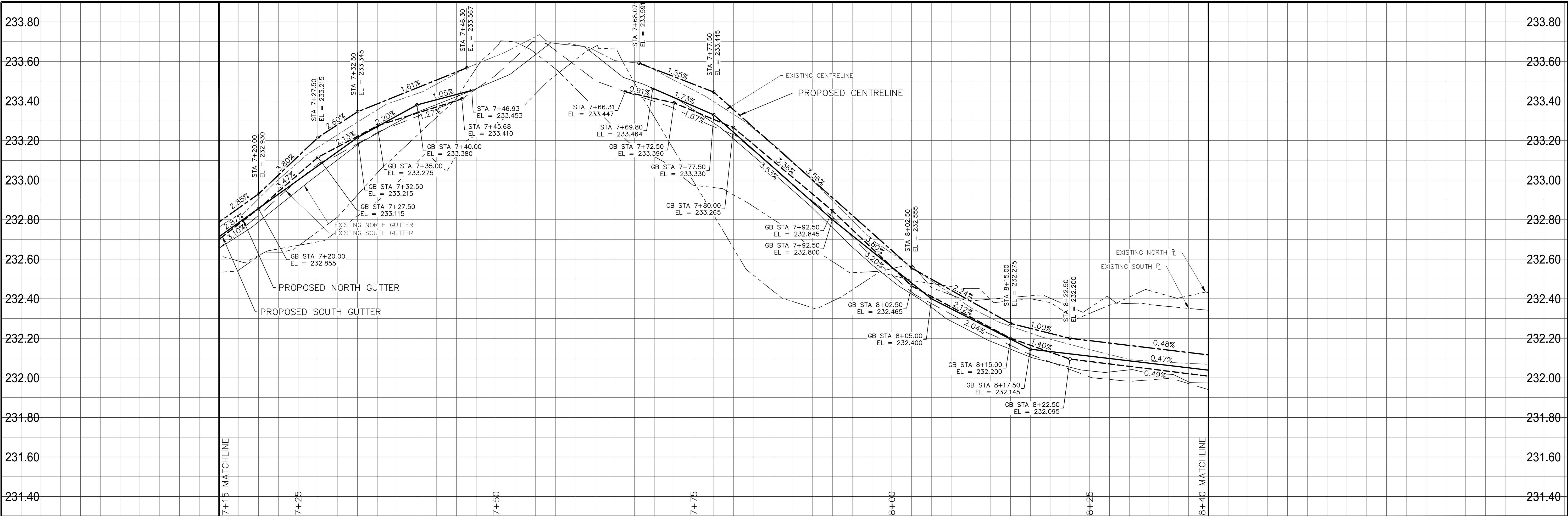


Mar 27, 2025 — 5:47pm
P:\2024\CA0043424.6934 - CA-25-R-04 Local Streets\02 Drawings\03_Work_Dwg\CA0043424.6934_CA_25-R-04_Waller_Plan&Profile.dwg -tab:230-2025_Drawing_CA0043424.6934-44-R0



- NOTES:
1. ALL WORK AND MATERIALS TO BE IN ACCORDANCE WITH THE LATEST REVISION OF THE CITY OF WINNIPEG STANDARD CONSTRUCTION SPECIFICATIONS.
 2. CONTRACTOR TO CONFIRM THE LOCATION OF ALL UTILITIES/SERVICES IN THE FIELD PRIOR TO CONSTRUCTION.
 3. ALL ROADWAY DIMENSIONS SHOWN ARE TO BACK OF CURB.
 4. EXISTING ASPHALT TO BE PLANED AS SHOWN OR AS DIRECTED BY CONTRACT ADMINISTRATOR.
 5. EXISTING SIDEWALK TO BE RENEWED AS PER SD-228A AND AS DIRECTED BY CONTRACT ADMINISTRATOR.
 6. REMOVE EXISTING CURB AND CONSTRUCT BARRIER CURB AS DIRECTED BY CONTRACT ADMINISTRATOR.
 7. FULL DEPTH ASPHALT PATCHING TO BE COMPLETED AS DIRECTED BY CONTRACT ADMINISTRATOR.
 8. ALL PRIVATE WALKWAYS TO BE ADJUSTED TO NEW SIDEWALK OR TOP OF CURB ELEVATION, AS DIRECTED BY THE CONTRACT ADMINISTRATOR.
 9. EXISTING LIP CURB AT PRIVATE APPROACHES TO BE RENEWED AS DIRECTED BY CONTRACT ADMINISTRATOR.
 10. PAVEMENT REPAIR FABRIC TO BE INSTALLED AS SHOWN OR AS DIRECTED BY CONTRACT ADMINISTRATOR.
 11. MODIFIED BARRIER CURB TO BE CONSTRUCTED AT ALL INTERSECTION RADII AND ALLEY RADII.
 12. OVERLAY CONCRETE AND ASPHALT RESIDENTIAL APPROACHES AS DIRECTED BY CONTRACT ADMINISTRATOR.
 13. CONTRACTORS TO TAKE PRECAUTIONARY STEPS TO PROTECT EXISTING TREES WITHIN THE LIMITS OF CONSTRUCTION FROM DAMAGE FROM CONSTRUCTION ACTIVITIES AS OUTLINED IN THE SPECIFICATIONS.
 14. LAMP STANDARDS, HYDRO POLES, AND ANCHORS THAT REQUIRE TEMPORARY SUPPORT, REMOVAL OR REPLACEMENT, TO BE DONE SO AT THE EXPENSE OF THE CONTRACTOR AS NECESSARY.
 15. ALL BOULEVARDS TO BE SODDED UNLESS OTHERWISE NOTED.
 16. ADJUST ALL WATER VALVES, HYDRANTS, MANHOLES, AND CATCH BASINS IN WORK AREA TO GRADE.

---	WATER MAIN	---	⊗	VALVE	---	EDGE OF SIDEWALK	---
---	LAND DRAINAGE SEWER	---	⊗	CURB STOP	---	EDGE OF ASPHALT	---
---	WASTE WATER SEWER	---	---	HYDRO POLE & LIGHT STANDARD	---	EDGE OF CONCRETE	---
---	HYDRO	---	⊗	LIGHT STANDARD OR TRAFFIC SIGNAL	---	MODIFIED BARRIER CURB	---
---	GAS	---	⊗	HYDRO POLE / ANCHOR	---	BARRIER CURB	---
---	COMMUNICATIONS	---	⊗	FENCE	---	BARRIER CURB AND GUTTER	---
---	SIGNALS	---	⊗	PROPERTY LINE	---	PAVING STONE	---
○	MANHOLE	●	⊗	TEST HOLE / PAVEMENT CORE	---	CONCRETE SIDEWALK	---
□	CATCH BASIN/CATCH PIT	■	⊗	ELEVATIONS	(231.000)	CONCRETE SLAB	---
△	CURB INLET	▼	⊗	CURB RAMP	---	ASPHALT	---
◇	UTILITIES ADJUSTED	△ ○	⊗	DETECTABLE WARNING SURFACE TILE	---	MILLED SURFACE	---
◇	HYDRANT	◆	⊗	LEGEND-PLAN	---	PAVEMENT REPAIR FABRIC	---
---	EXISTING	---	---	LEGEND-PLAN	---	---	---

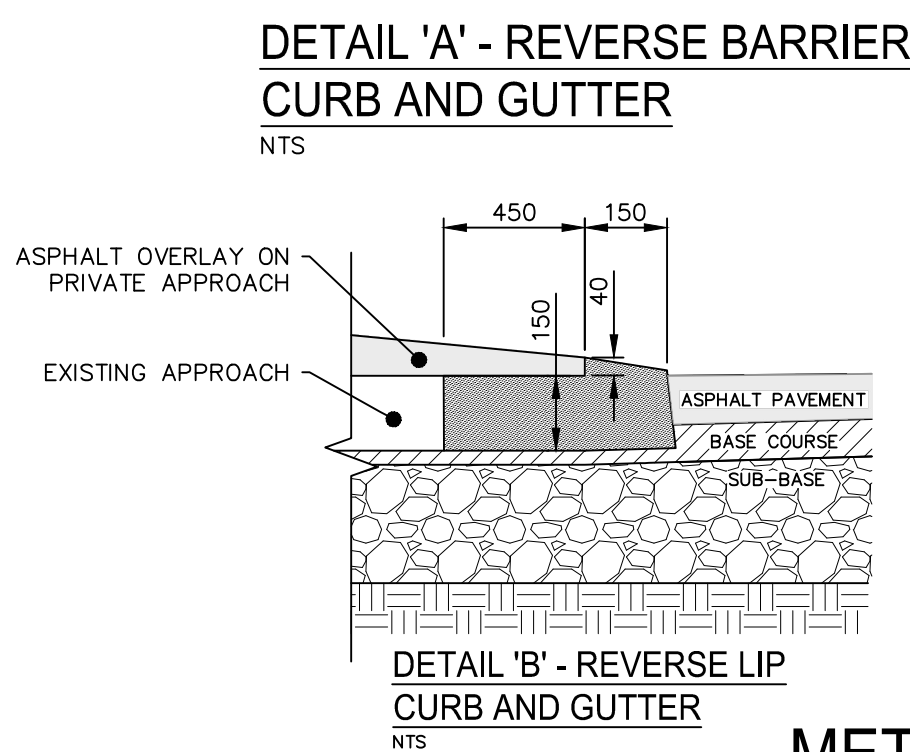
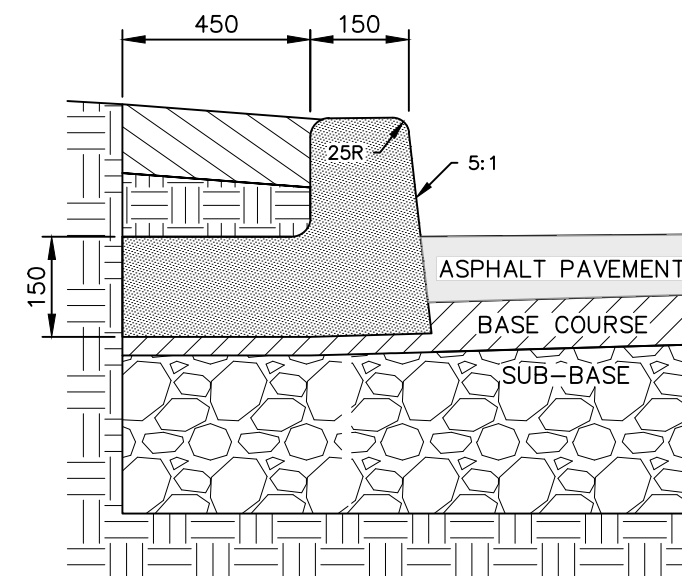
LOCATIONS APPROVED UNDERGROUND STRUCTURES	
SIGNED BY:	DATE
SUPV UG STRUCTURES	
LOCATION OF UNDERGROUND STRUCTURES AS SHOWN ARE BASED ON THE BEST INFORMATION AVAILABLE BUT NO GUARANTEE IS GIVEN THAT ALL EXISTING UTILITIES ARE SHOWN OR THAT THE GIVEN LOCATIONS ARE EXACT CONFIRMATION OF EXISTENCE AND EXACT LOCATION OF ALL SERVICES MUST BE OBTAINED FROM THE INDIVIDUAL UTILITIES BEFORE PROCEEDING	

G.B.M. ELEV.	TOH AT 1348 WALLER AVE	
232.985		
7		
6		
5		
4		
3		
2		
1		
0	ISSUED FOR TENDER	2025/03/21 R.H.
NO.	REVISIONS	DATE BY

wsp	
DESIGNED BY	R.H./G.Z.
CHECKED BY	R.H.
DRAWN BY	K.C./W.D.
APPROVED BY	S.M.
HOR. SCALE	1:250
VERTICAL	1:10
RELEASED FOR CONSTRUCTION	
DATE	JANUARY 2025

ENGINEER'S SEAL	
CONSULTANT ACAD DWG. NO.	CA0043424.6934-44

FOR TENDER PURPOSES ONLY
NOT FOR CONSTRUCTION



METRIC
WHOLE NUMBERS INDICATE MILLIMETRES
DECIMALIZED NUMBERS INDICATE METRES

ENGINEERS
GEOSCIENTISTS
MANITOBA
Certificate of Authorization
WSP Canada Inc.
No. 5750

THE CITY OF WINNIPEG PUBLIC WORKS DEPARTMENT ENGINEERING SERVICES DIVISION	
2025 LOCAL STREET RENEWALS	
WALLER AVENUE	
MAJOR REHABILITATION STA. 7+15 TO STA. 8+40	
CITY DRAWING NUMBER	
SHEET	44 OF 47
TENDER NO.	230-2025