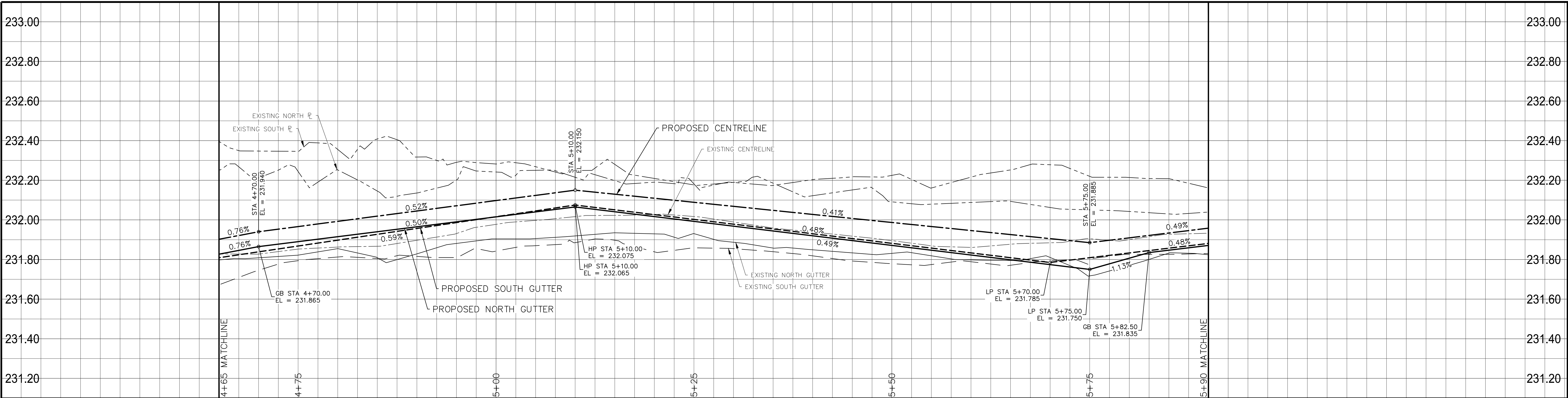
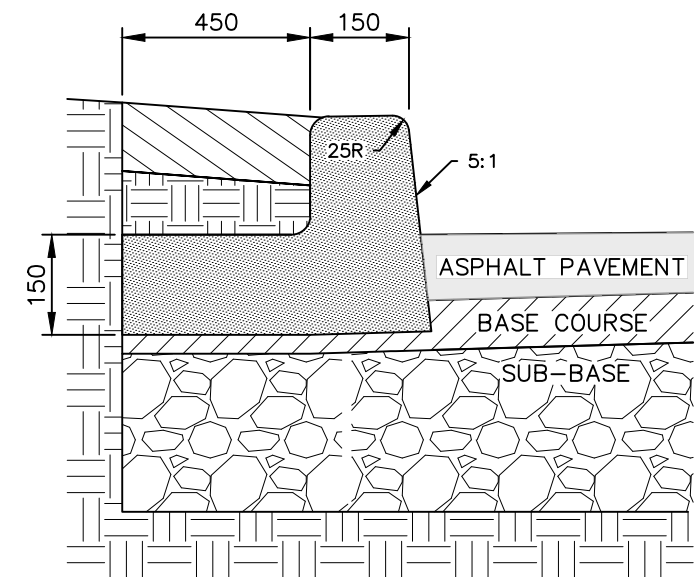
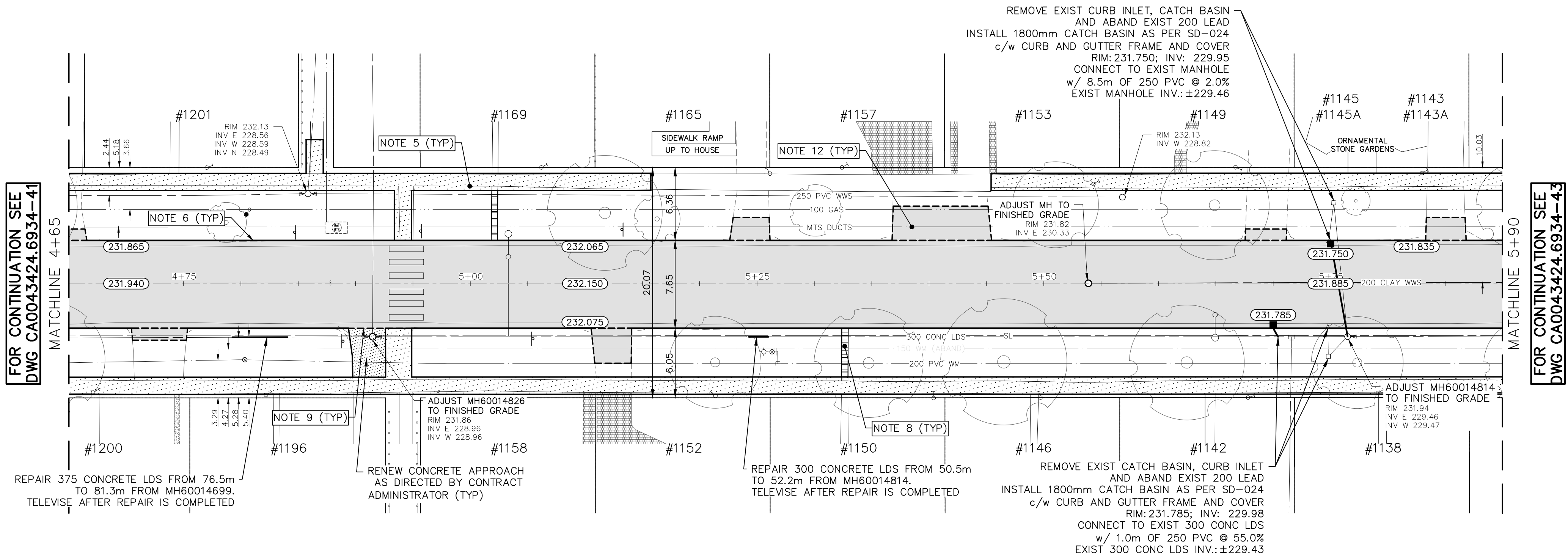


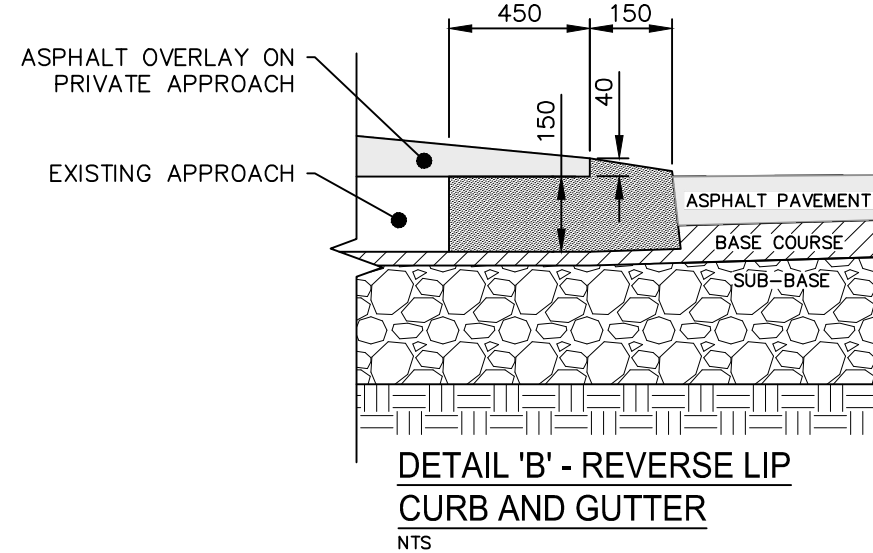
Mar 27, 2025 — 5:44pm  
P:\2024\CA0043424.6934 - CA-25-R-04 Local Streets\02 Drawings\03\_Works\_Dwg CA0043424.6934\_CA\_25-R-04\_Waller\_Plan&Profile.dwg -tab:230-2025\_Drawing\_CA0043424.6934-42-R0



WALLER AVENUE



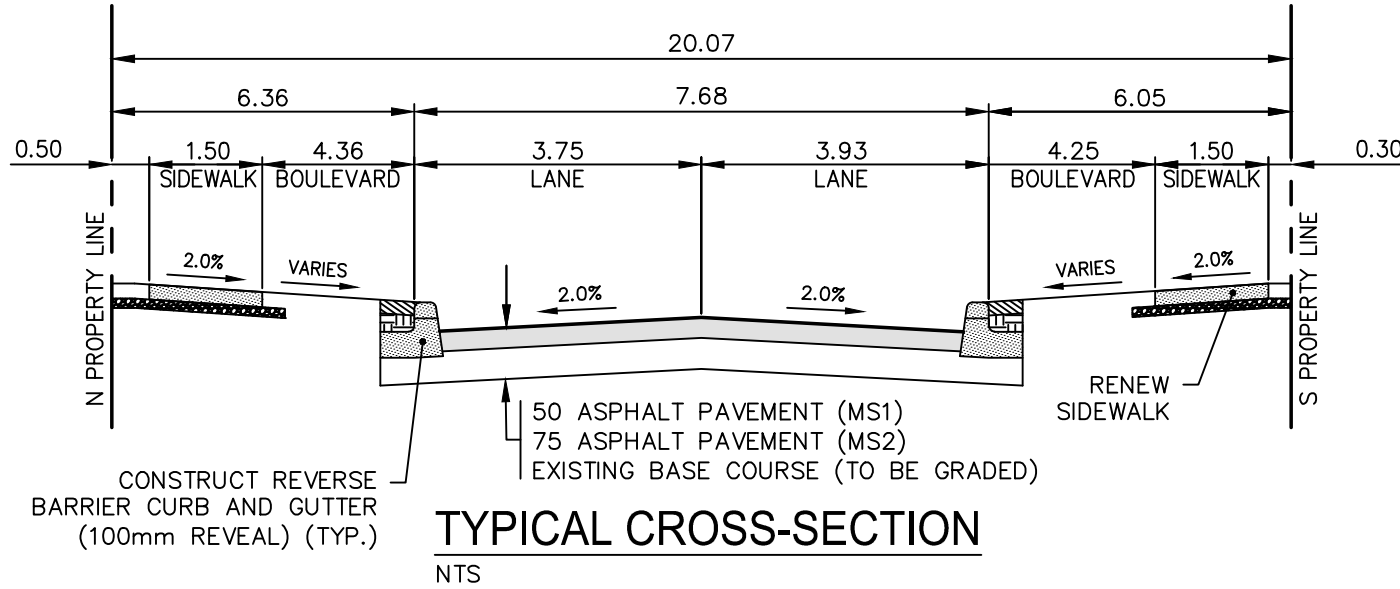
DETAIL 'A' - REVERSE BARRIER CURB AND GUTTER  
NTS



DETAIL 'B' - REVERSE LIP CURB AND GUTTER  
NTS

NOTES:

1. ALL WORK AND MATERIALS TO BE IN ACCORDANCE WITH THE LATEST REVISION OF THE CITY OF WINNIPEG STANDARD CONSTRUCTION SPECIFICATIONS.
2. CONTRACTOR TO CONFIRM THE LOCATION OF ALL UTILITIES/SERVICES IN THE FIELD PRIOR TO CONSTRUCTION.
3. ALL ROADWAY DIMENSIONS SHOWN ARE TO BACK OF CURB.
4. EXISTING ASPHALT TO BE PLANED AS SHOWN OR AS DIRECTED BY CONTRACT ADMINISTRATOR.
5. EXISTING SIDEWALK TO BE RENEWED AS PER SD-228A AND AS DIRECTED BY CONTRACT ADMINISTRATOR.
6. REMOVE EXISTING CURB AND CONSTRUCT BARRIER CURB AS DIRECTED BY CONTRACT ADMINISTRATOR.
7. FULL DEPTH ASPHALT PATCHING TO BE COMPLETED AS DIRECTED BY CONTRACT ADMINISTRATOR.
8. ALL PRIVATE WALKWAYS TO BE ADJUSTED TO NEW SIDEWALK OR TOP OF CURB ELEVATION, AS DIRECTED BY THE CONTRACT ADMINISTRATOR.
9. EXISTING LIP CURB AT PRIVATE APPROACHES TO BE RENEWED AS DIRECTED BY CONTRACT ADMINISTRATOR.
10. PAVEMENT REPAIR FABRIC TO BE INSTALLED AS SHOWN OR AS DIRECTED BY CONTRACT ADMINISTRATOR.
11. MODIFIED BARRIER CURB TO BE CONSTRUCTED AT ALL INTERSECTION RADII AND ALLEY RADII.
12. OVERLAY CONCRETE AND ASPHALT RESIDENTIAL APPROACHES AS DIRECTED BY CONTRACT ADMINISTRATOR.
13. CONTRACTORS TO TAKE PRECAUTIONARY STEPS TO PROTECT EXISTING TREES WITHIN THE LIMITS OF CONSTRUCTION FROM DAMAGE FROM CONSTRUCTION ACTIVITIES AS OUTLINED IN THE SPECIFICATIONS.
14. LAMP STANDARDS, HYDRO POLES, AND ANCHORS THAT REQUIRE TEMPORARY SUPPORT, REMOVAL OR REPLACEMENT, TO BE DONE SO AT THE EXPENSE OF THE CONTRACTOR AS NECESSARY.
15. ALL BOULEVARDS TO BE SODDED UNLESS OTHERWISE NOTED.
16. ADJUST ALL WATER VALVES, HYDRANTS, MANHOLES, AND CATCH BASINS IN WORK AREA TO GRADE.



TYPICAL CROSS-SECTION  
NTS

METRIC

WHOLE NUMBERS INDICATE MILLIMETRES  
DECIMALIZED NUMBERS INDICATE METRES

**ENGINEERS  
GEOSCIENTISTS  
MANITOBA**  
Certificate of Authorization  
WSP Canada Inc.  
No. 5750

FOR TENDER PURPOSES ONLY

NOT FOR CONSTRUCTION

---	WATER MAIN	---	⊗	VALVE	---	EDGE OF SIDEWALK	---
---	LAND DRAINAGE SEWER	---	⊗	CURB STOP	---	EDGE OF ASPHALT	---
---	WASTE WATER SEWER	---	⊗	HYDRO POLE & LIGHT STANDARD	---	EDGE OF CONCRETE	---
---	HYDRO	---	⊗	LIGHT STANDARD OR TRAFFIC SIGNAL	---	MODIFIED BARRIER CURB	---
---	GAS	---	⊗	HYDRO POLE / ANCHOR	---	BARRIER CURB	---
---	COMMUNICATIONS	---	⊗	FENCE	---	BARRIER CURB AND GUTTER	---
---	SIGNALS	---	⊗	PROPERTY LINE	---	PAVING STONE	---
○	MANHOLE	●	⊗	TEST HOLE / PAVEMENT CORE	---	CONCRETE SIDEWALK	---
□	CATCH BASIN/CATCH PIT	■	⊗	ELEVATIONS (231.000)	---	CONCRETE SLAB	---
△	CURB INLET	▼	⊗	CURB RAMP	---	ASPHALT	---
◇	UTILITIES ADJUSTED	△ □ ○	⊗	DETECTABLE WARNING SURFACE TILE	---	MILLED SURFACE	---
◇	HYDRANT	◆	⊗		---	PAVEMENT REPAIR FABRIC	---
EXISTING	LEGEND-PLAN	PROPOSED	EXISTING	LEGEND-PLAN	PROPOSED	EXISTING	LEGEND-PLAN

LOCATIONS APPROVED  
UNDERGROUND STRUCTURES

SIGNED BY:  
SUPPLY UNDER STRUCTURES

DATE

LOCATION OF UNDERGROUND STRUCTURES AS SHOWN ARE BASED ON THE BEST INFORMATION AVAILABLE BUT NO GUARANTEE IS GIVEN THAT ALL EXISTING UTILITIES ARE SHOWN OR THAT THE GIVEN LOCATIONS ARE EXACT CONFIRMATION OF EXISTENCE AND EXACT LOCATION OF ALL SERVICES MUST BE OBTAINED FROM THE INDIVIDUAL UTILITIES BEFORE PROCEEDING

G.B.M. TOH AT 1348 WALLER AVE  
ELEV. 232.985

7  
6  
5  
4  
3  
2  
1  
0

NO. REVISIONS

DATE BY

**wsp**

DESIGNED BY  
R.H./G.Z.

DRAWN BY  
K.C./W.D.

HOR. SCALE  
VERTICAL  
1:250  
1:10

DATE JANUARY 2025

WSP Canada Inc.  
1600 Buffalo Place  
Winnipeg, MB R3T 6B8  
t. 204.477.6650  
f. 204.474.2864  
www.wsp.com

ENGINEER'S SEAL

CHECKED BY  
R.H.

APPROVED BY  
S.M.

RELEASED FOR  
CONSTRUCTION

DATE

CONSULTANT ACAD DWG. NO.  
CA0043424.6934-42

**Winnipeg**

**THE CITY OF WINNIPEG**  
PUBLIC WORKS DEPARTMENT  
ENGINEERING SERVICES DIVISION

2025 LOCAL STREET RENEWALS

WALLER AVENUE

MAJOR REHABILITATION  
STA. 4+65 TO STA. 5+90

CITY DRAWING NUMBER

SHEET 42 OF 47

TENDER NO.  
230-2025