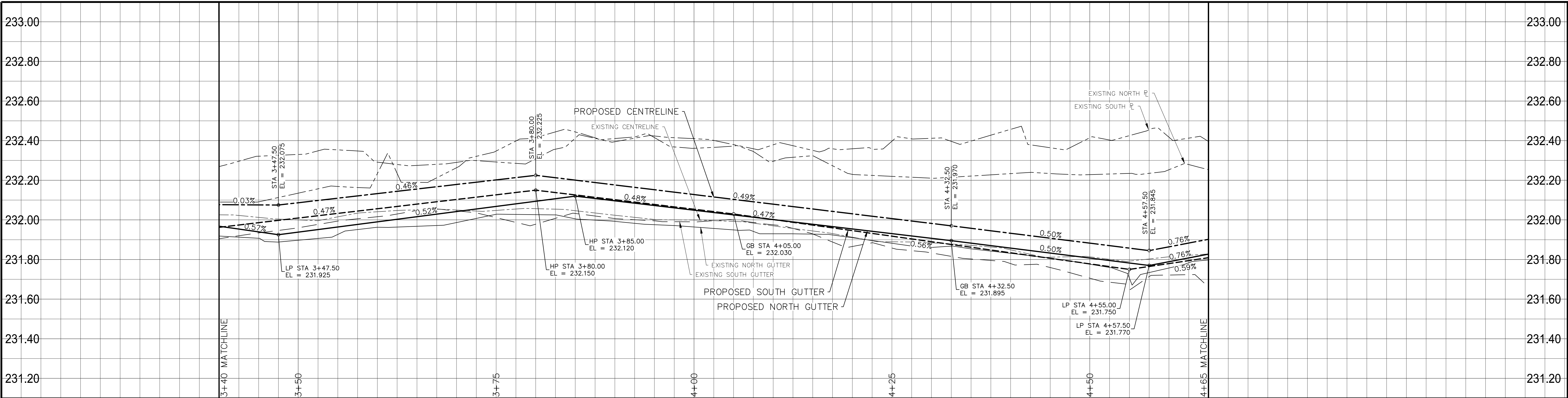


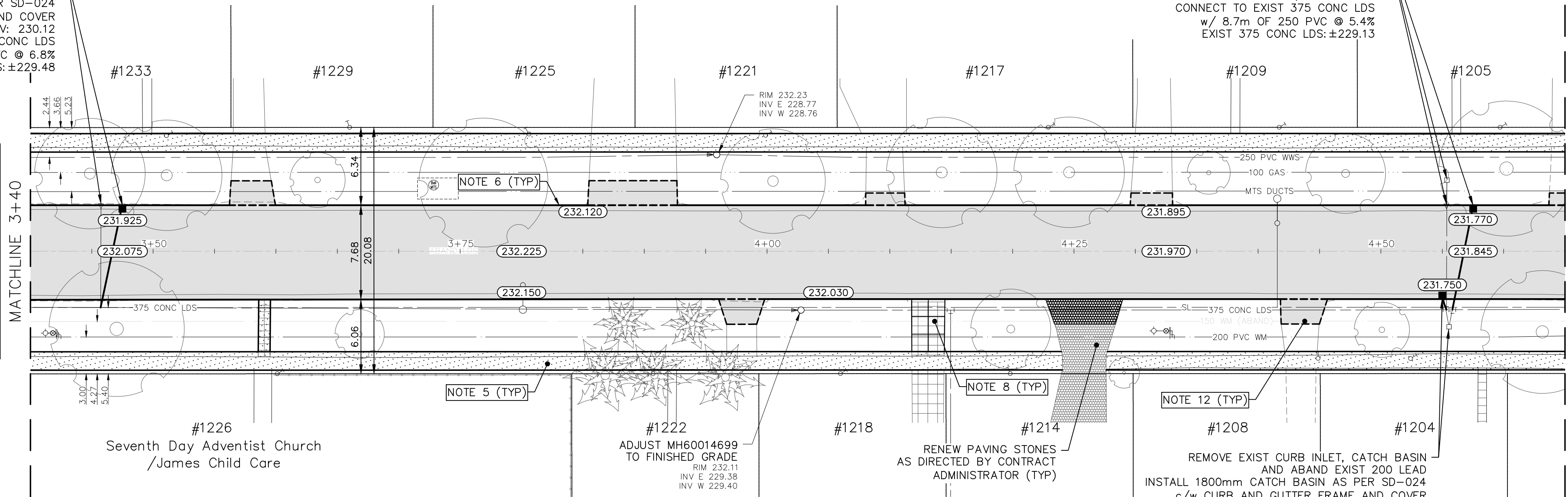
Mar 27, 2025 — 5:43pm
P:\2024\CA0043424.6934 - CA-25-R-04 Local Streets\02 Drawings\03_Work_Dwg\CA0043424.6934_CA_25-R-04_Waller_Plan&Profile.dwg -tab:230-2025_Drawing_CA0043424.6934-41-R0



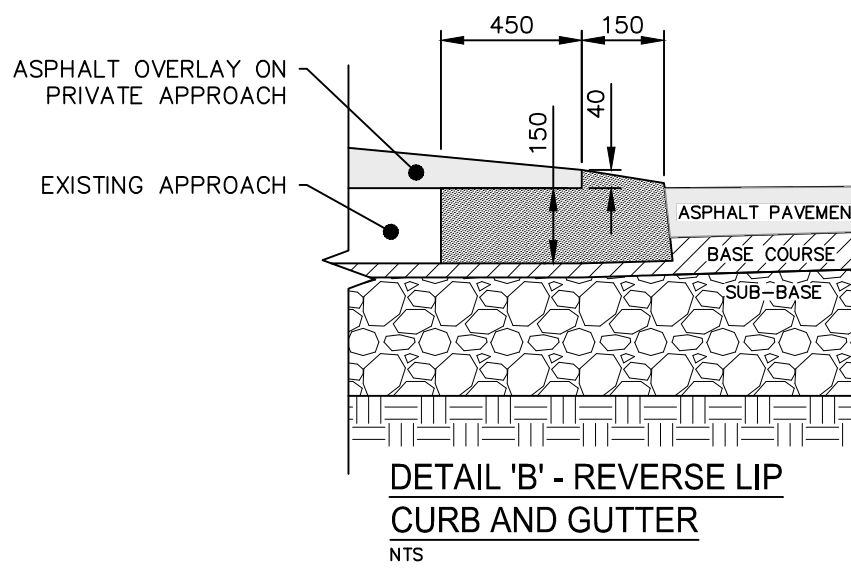
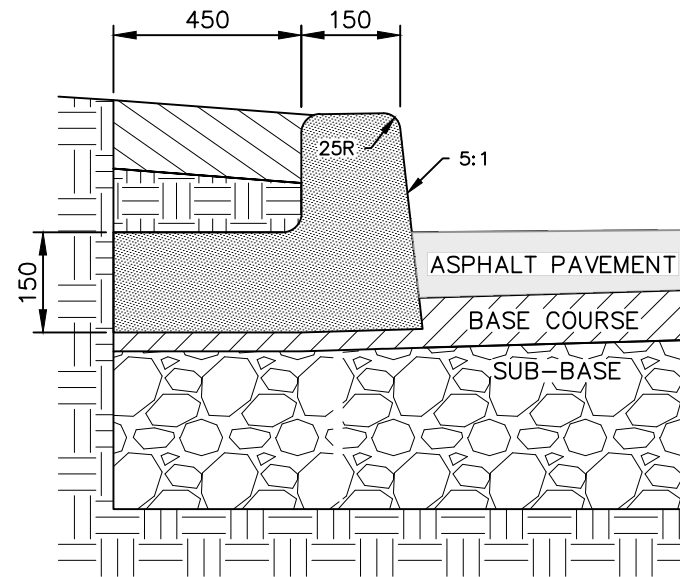
WALLER AVENUE

REMOVE EXIST CURB INLET, CATCH BASIN AND ABAND EXIST 200 LEAD
INSTALL 1800mm CATCH BASIN AS PER SD-024
c/w CURB AND GUTTER FRAME AND COVER
RIM: 231.925; INV: 230.12
CONNECT TO EXIST 375 CONC LDS
w/ 8.5m OF 250 PVC @ 6.8%
EXIST 375 CONC LDS: ±229.48

FOR CONTINUATION SEE
DWG CA0043424.6934-40

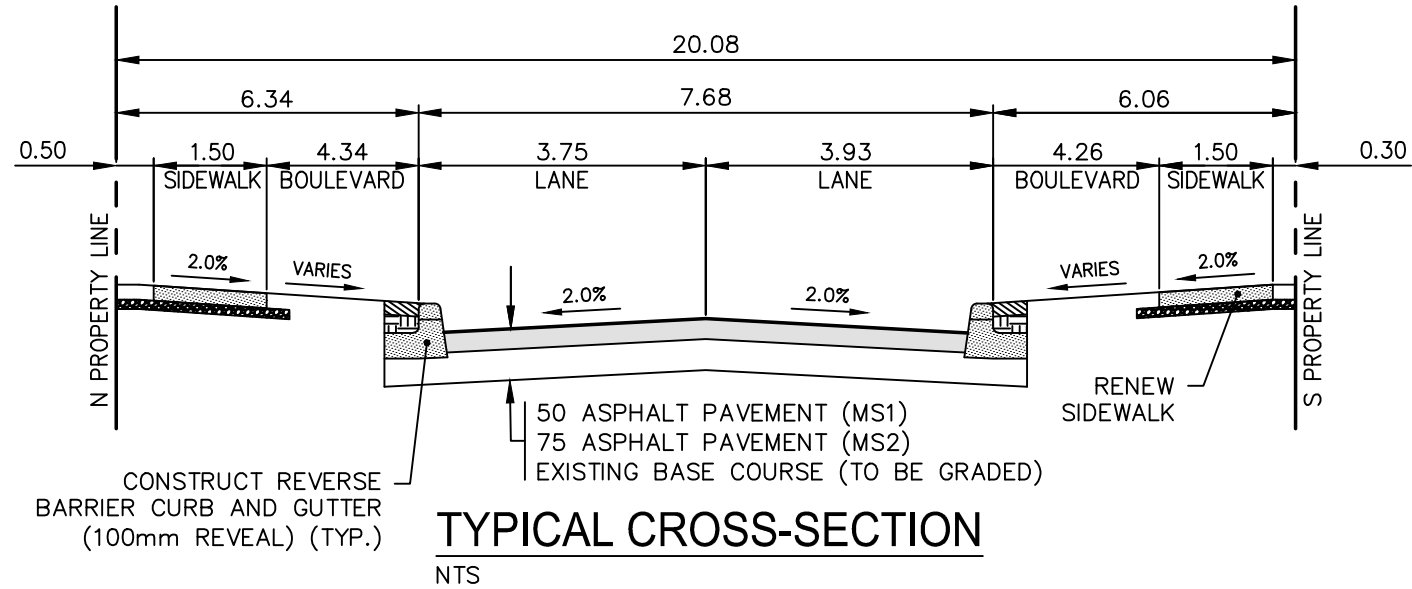


FOR CONTINUATION SEE
DWG CA0043424.6934-42



NOTES:

- ALL WORK AND MATERIALS TO BE IN ACCORDANCE WITH THE LATEST REVISION OF THE CITY OF WINNIPEG STANDARD CONSTRUCTION SPECIFICATIONS.
- CONTRACTOR TO CONFIRM THE LOCATION OF ALL UTILITIES/SERVICES IN THE FIELD PRIOR TO CONSTRUCTION.
- ALL ROADWAY DIMENSIONS SHOWN ARE TO BACK OF CURB.
- EXISTING ASPHALT TO BE PLANED AS SHOWN OR AS DIRECTED BY CONTRACT ADMINISTRATOR.
- EXISTING SIDEWALK TO BE RENEWED AS PER SD-228A AND AS DIRECTED BY CONTRACT ADMINISTRATOR.
- REMOVE EXISTING CURB AND CONSTRUCT BARRIER CURB AS DIRECTED BY CONTRACT ADMINISTRATOR.
- FULL DEPTH ASPHALT PATCHING TO BE COMPLETED AS DIRECTED BY CONTRACT ADMINISTRATOR.
- ALL PRIVATE WALKWAYS TO BE ADJUSTED TO NEW SIDEWALK OR TOP OF CURB ELEVATION, AS DIRECTED BY THE CONTRACT ADMINISTRATOR.
- EXISTING LIP CURB AT PRIVATE APPROACHES TO BE RENEWED AS DIRECTED BY CONTRACT ADMINISTRATOR.
- PAVEMENT REPAIR FABRIC TO BE INSTALLED AS SHOWN OR AS DIRECTED BY CONTRACT ADMINISTRATOR.
- MODIFIED BARRIER CURB TO BE CONSTRUCTED AT ALL INTERSECTION RADI AND ALLEY RADI.
- OVERLAY CONCRETE AND ASPHALT RESIDENTIAL APPROACHES AS DIRECTED BY CONTRACT ADMINISTRATOR.
- CONTRACTORS TO TAKE PRECAUTIONARY STEPS TO PROTECT EXISTING TREES WITHIN THE LIMITS OF CONSTRUCTION FROM DAMAGE FROM CONSTRUCTION ACTIVITIES AS OUTLINED IN THE SPECIFICATIONS.
- LAMP STANDARDS, HYDRO POLES, AND ANCHORS THAT REQUIRE TEMPORARY SUPPORT, REMOVAL OR REPLACEMENT, TO BE DONE SO AT THE EXPENSE OF THE CONTRACTOR AS NECESSARY.
- ALL BOULEVARDS TO BE SODDED UNLESS OTHERWISE NOTED.
- ADJUST ALL WATER VALVES, HYDRANTS, MANHOLES, AND CATCH BASINS IN WORK AREA TO GRADE.



METRIC

WHOLE NUMBERS INDICATE MILLIMETRES
DECIMALIZED NUMBERS INDICATE METRES

**ENGINEERS
GEOSCIENTISTS
MANITOBA**
Certificate of Authorization
WSP Canada Inc.
No. 5750

FOR TENDER PURPOSES ONLY
NOT FOR CONSTRUCTION

EXISTING	LEGEND-PLAN	PROPOSED	EXISTING	LEGEND-PLAN	PROPOSED	EXISTING	LEGEND-PLAN	PROPOSED
---	WATER MAIN	⊗	---	VALVE	⊗	---	EDGE OF SIDEWALK	---
---	LAND DRAINAGE SEWER	---	---	CURB STOP	---	---	EDGE OF ASPHALT	---
---	WASTE WATER SEWER	---	---	HYDRO POLE & LIGHT STANDARD	---	---	EDGE OF CONCRETE	---
---	HYDRO	⊗	---	LIGHT STANDARD OR TRAFFIC SIGNAL	⊗	---	MODIFIED BARRIER CURB	---
---	GAS	⊗	---	HYDRO POLE / ANCHOR	⊗	---	BARRIER CURB	---
---	COMMUNICATIONS	⊗	---	FENCE	---	---	BARRIER CURB AND GUTTER	---
---	SIGNALS	⊗	---	PROPERTY LINE	---	---	PAVING STONE	---
○	MANHOLE	●	---	TEST HOLE / PAVEMENT CORE	---	---	CONCRETE SIDEWALK	---
□	CATCH BASIN/CATCH PIT	■	---	ELEVATIONS	(231.000)	---	CONCRETE SLAB	---
△	CURB INLET	▽	---	CURB RAMP	---	---	ASPHALT	---
◇	UTILITIES ADJUSTED	△ □ ○	---	DETECTABLE WARNING SURFACE TILE	---	---	MILLED SURFACE	---
◇	HYDRANT	◆	---			---	PAVEMENT REPAIR FABRIC	---

LOCATIONS APPROVED UNDERGROUND STRUCTURES

SIGNED BY:
SUPV UG STRUCTURES

DATE

LOCATION OF UNDERGROUND STRUCTURES AS SHOWN ARE BASED ON THE BEST INFORMATION AVAILABLE BUT NO GUARANTEE IS GIVEN THAT ALL EXISTING UTILITIES ARE SHOWN OR THAT THE GIVEN LOCATIONS ARE EXACT CONFIRMATION OF EXISTENCE AND EXACT LOCATION OF ALL SERVICES MUST BE OBTAINED FROM THE INDIVIDUAL UTILITIES BEFORE PROCEEDING

G.B.M. TOH AT 1348 WALLER AVE
ELEV. 232.965

7
6
5
4
3
2
1
0

ISSUED FOR TENDER

NO. REVISIONS

DATE BY

wsp

DESIGNED BY
R.H./G.Z.

DRAWN BY
K.C./W.D.

HOR. SCALE
VERTICAL
1:250
1:10

DATE
JANUARY 2025

WSP Canada Inc.
1600 Buffalo Place
Winnipeg, MB R3T 6B8
t. 204.477.6650
f. 204.474.2864
www.wsp.com

CHECKED BY
R.H.

APPROVED BY
S.M.

RELEASED FOR
CONSTRUCTION

DATE

ENGINEER'S SEAL

CONSULTANT ACAD DWG. NO.
CA0043424.6934-41

Winnipeg

THE CITY OF WINNIPEG
PUBLIC WORKS DEPARTMENT
ENGINEERING SERVICES DIVISION

2025 LOCAL STREET RENEWALS

WALLER AVENUE

MAJOR REHABILITATION
STA. 3+40 TO STA. 4+65

CITY DRAWING NUMBER

SHEET 41 OF 47

TENDER NO.
230-2025