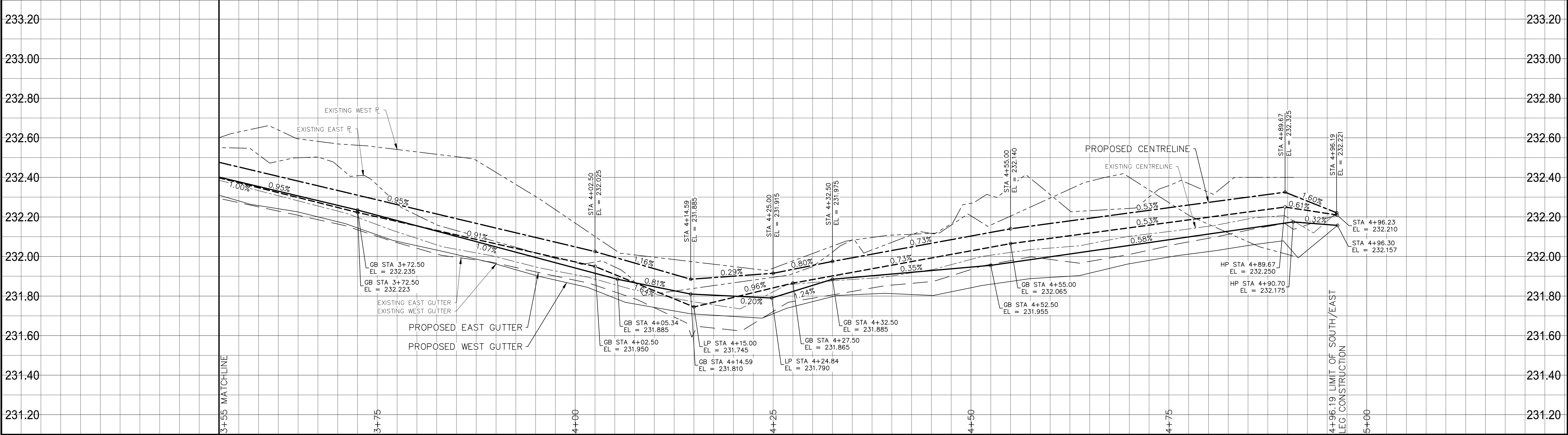
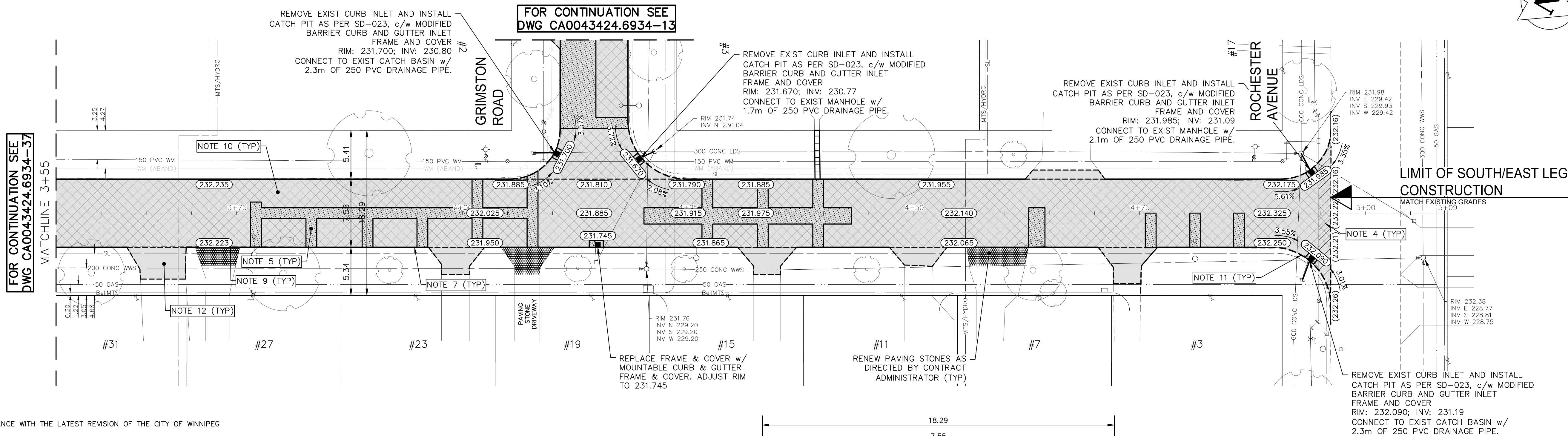


Mar 27, 2025 — 5:49pm  
P:\2024\CA0043424.6934 - CA-25-R-04 Local Streets\02 Drawings\03\_Works\_Dwg\CA0043424.6934\_CA\_25-R-04\_Valence\_PlaneProfile.dwg - tab:230-2025\_Drawing\_CA0043424.6934-38-R0



VALENCE AVENUE (SOUTH/EAST LEG)



- NOTES:
1. ALL WORK AND MATERIALS TO BE IN ACCORDANCE WITH THE LATEST REVISION OF THE CITY OF WINNIPEG STANDARD CONSTRUCTION SPECIFICATIONS.
  2. CONTRACTOR TO CONFIRM THE LOCATION OF ALL UTILITIES/SERVICES IN THE FIELD PRIOR TO CONSTRUCTION.
  3. ALL ROADWAY DIMENSIONS SHOWN ARE TO BACK OF CURB.
  4. EXISTING ASPHALT TO BE PLANED AS SHOWN OR AS DIRECTED BY CONTRACT ADMINISTRATOR.
  5. 150mm PARTIAL CONCRETE SLAB PATCHES SHOWN ARE ONLY A REPRESENTATIVE APPROXIMATION OF THE TENDERED QUANTITIES.
  6. EXISTING SIDEWALK TO BE RENEWED AS PER SD-228A AND AS DIRECTED BY CONTRACT ADMINISTRATOR.
  7. PLANE EXISTING CURB AND INSTALL MODIFIED LIP CURB AS PER SD-202C AND AS DIRECTED BY CONTRACT ADMINISTRATOR.
  8. ALL PRIVATE WALKWAYS TO BE ADJUSTED TO NEW SIDEWALK OR TOP OF CURB ELEVATION, AS DIRECTED BY THE CONTRACT ADMINISTRATOR.
  9. EXISTING LIP CURB AT PRIVATE APPROACHES TO BE RENEWED AS DIRECTED BY CONTRACT ADMINISTRATOR.
  10. PAVEMENT REPAIR FABRIC TO BE INSTALLED AS SHOWN OR AS DIRECTED BY CONTRACT ADMINISTRATOR.
  11. MODIFIED BARRIER CURB TO BE CONSTRUCTED AT ALL INTERSECTION RADII AND ALLEY RADII.
  12. OVERLAY EXISTING CONCRETE AND ASPHALT RESIDENTIAL APPROACHES AS DIRECTED BY CONTRACT ADMINISTRATOR.
  13. CONTRACTORS TO TAKE PRECAUTIONARY STEPS TO PROTECT EXISTING TREES WITHIN THE LIMITS OF CONSTRUCTION FROM DAMAGE FROM CONSTRUCTION ACTIVITIES AS OUTLINED IN THE SPECIFICATIONS.
  14. LAMP STANDARDS, HYDRO POLES, AND ANCHORS THAT REQUIRE TEMPORARY SUPPORT, REMOVAL OR REPLACEMENT, TO BE DONE SO AT THE EXPENSE OF THE CONTRACTOR AS NECESSARY.
  15. ALL BOULEVARDS TO BE SODDED UNLESS OTHERWISE NOTED.
  16. ADJUST ALL WATER VALVES, HYDRANTS, MANHOLES, AND CATCH BASINS IN WORK AREA TO GRADE.

---	WATER MAIN	---	⊗	VALVE	---
---	LAND DRAINAGE SEWER	---	⊗	CURB STOP	---
---	WASTE WATER SEWER	---	⊗	HYDRO POLE & LIGHT STANDARD	---
---	HYDRO	---	⊗	LIGHT STANDARD OR TRAFFIC SIGNAL	---
---	GAS	---	⊗	HYDRO POLE / ANCHOR	---
---	COMMUNICATIONS	---	⊗	FENCE	---
---	SIGNALS	---	⊗	PROPERTY LINE	---
○	MANHOLE	●	⊗	IRON BAR	---
□	CATCH BASIN/CATCH PIT	■	⊗	TEST HOLE / PAVEMENT CORE	---
△	CURB INLET	▼	⊗	ELEVATIONS	(231.000)
◇	UTILITIES ADJUSTED	△ □ ○	⊗	CURB RAMP	---
◇	HYDRANT	◆	⊗	DETECTABLE WARNING SURFACE TILE	---
EXISTING	LEGEND-PLAN	PROPOSED	EXISTING	LEGEND-PLAN	PROPOSED

LOCATIONS APPROVED UNDERGROUND STRUCTURES

SIGNED BY:  
SUPPLY UNDER STRUCTURES

DATE

LOCATION OF UNDERGROUND STRUCTURES AS SHOWN ARE BASED ON THE BEST INFORMATION AVAILABLE BUT NO GUARANTEE IS GIVEN THAT ALL EXISTING UTILITIES ARE SHOWN OR THAT THE GIVEN LOCATIONS ARE EXACT CONFIRMATION OF EXISTENCE AND EXACT LOCATION OF ALL SERVICES MUST BE OBTAINED FROM THE INDIVIDUAL UTILITIES BEFORE PROCEEDING

G.B.M. TOH AT NW CORNER OF MORNINGSIDE DR AND VALENCE AVE INTERSECTION  
ELEV. 234.326

7			
6			
5			
4			
3			
2			
1			
0	ISSUED FOR TENDER	2025/03/21	R.H.
NO.	REVISIONS	DATE	BY



DESIGNED BY  
R.H./G.Z.

DRAWN BY  
K.C./W.D.

HOR. SCALE  
VERTICAL  
1:250  
1:10

DATE  
JANUARY 2025

WSP Canada Inc.  
1600 Buffalo Place  
Winnipeg, MB R3T 6B8  
t. 204.477.6650  
f. 204.474.2864  
www.wsp.com

ENGINEER'S SEAL

CONSULTANT ACAD DWG. NO.  
CA0043424.6934-38

FOR TENDER PURPOSES ONLY  
NOT FOR CONSTRUCTION

METRIC

WHOLE NUMBERS INDICATE MILLIMETRES  
DECIMALIZED NUMBERS INDICATE METRES

**ENGINEERS  
GEOSCIENTISTS  
MANITOBA**  
Certificate of Authorization  
WSP Canada Inc.  
No. 5750



**THE CITY OF WINNIPEG**  
PUBLIC WORKS DEPARTMENT  
ENGINEERING SERVICES DIVISION

2025 LOCAL STREET RENEWALS  
VALENCE AVENUE (SOUTH/EAST LEG)

MAJOR REHABILITATION  
STA. 3+55 TO STA. 4+96.19

CITY DRAWING NUMBER  
SHEET 38 OF 47

TENDER NO.  
230-2025