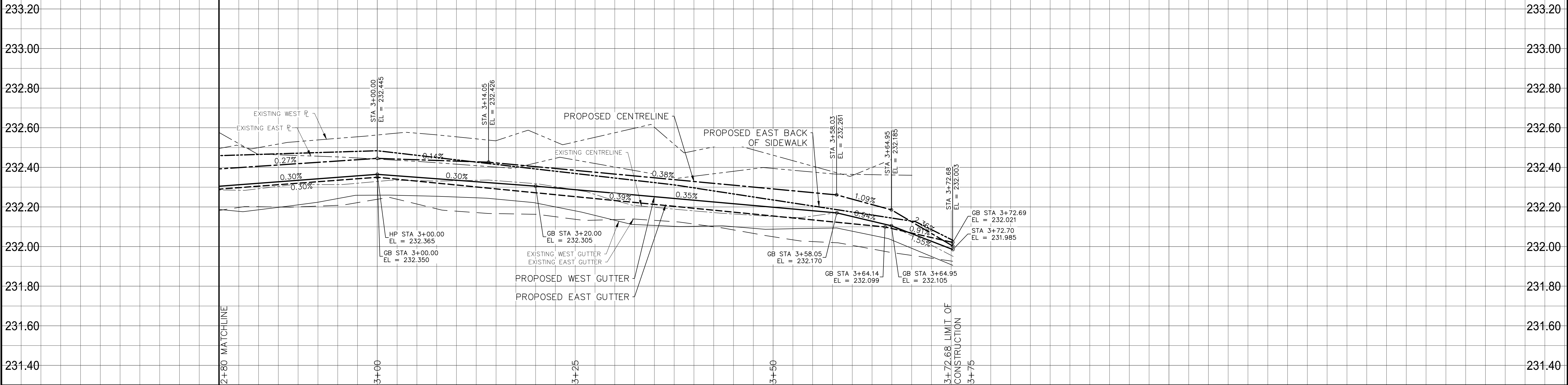
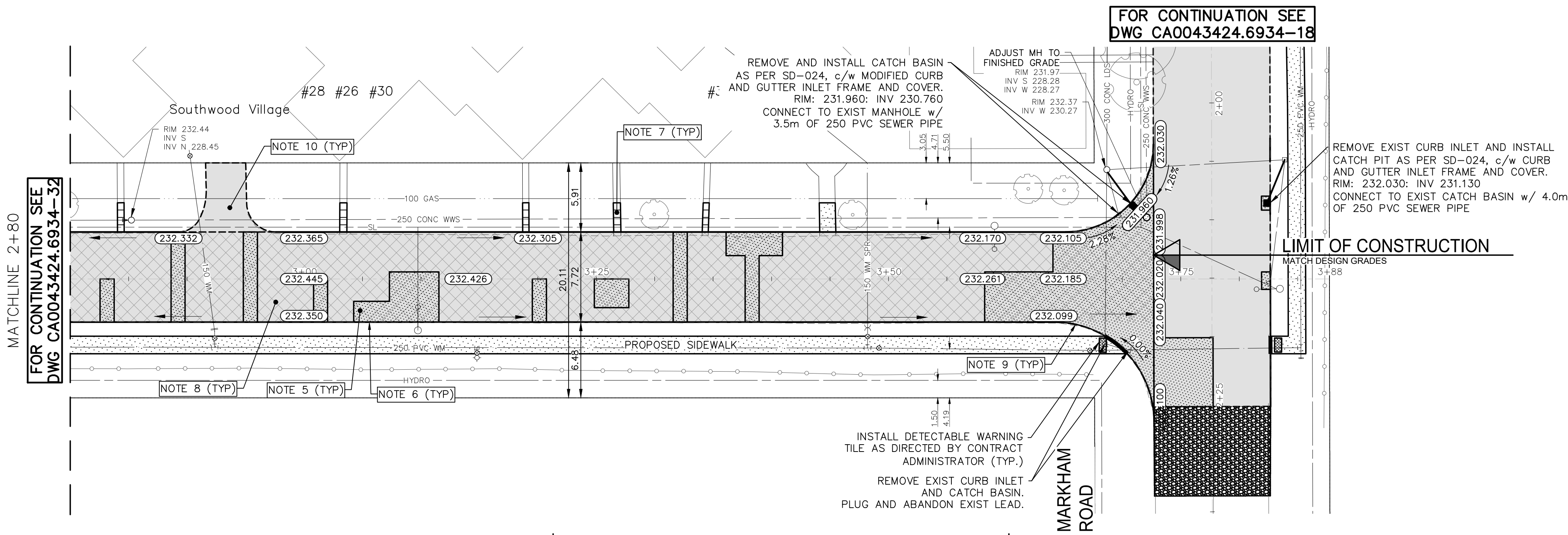
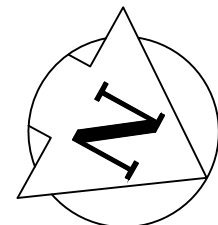


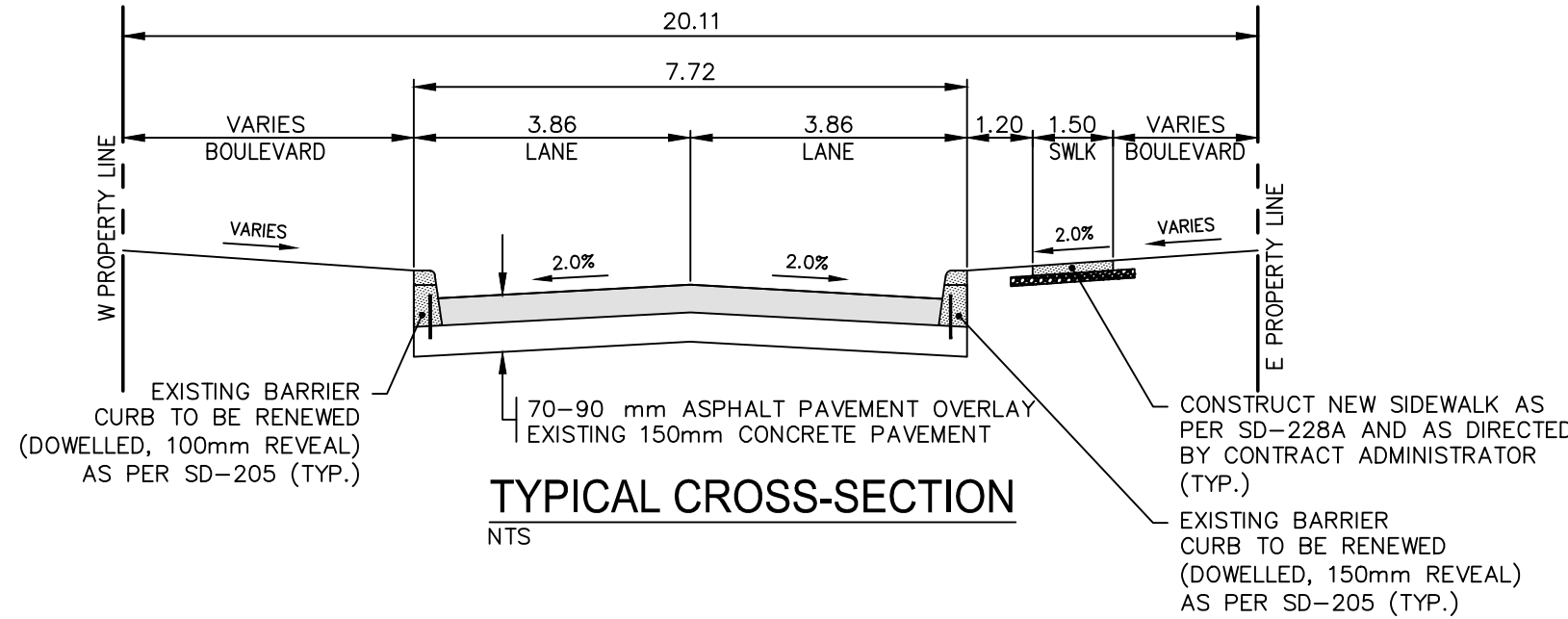
Mar 27, 2025 — 6:02pm
P:\2024\CA0043424.6934 - CA-25-R-04 Local Streets\02 Drawings\03 Work_Dwg CA0043424.6934_CA_25-R-04_Snow_Plan&Profile.dwg - tab:230-2025_Drawing_CA0043424.6934-33-RO



SNOW STREET



- NOTES:
1. ALL WORK AND MATERIALS TO BE IN ACCORDANCE WITH THE LATEST REVISION OF THE CITY OF WINNIPEG STANDARD CONSTRUCTION SPECIFICATIONS.
 2. CONTRACTOR TO CONFIRM THE LOCATION OF ALL UTILITIES/SERVICES IN THE FIELD PRIOR TO CONSTRUCTION.
 3. ALL ROADWAY DIMENSIONS SHOWN ARE TO BACK OF CURB.
 4. EXISTING ASPHALT TO BE PLANED AS SHOWN OR AS DIRECTED BY CONTRACT ADMINISTRATOR
 5. 150mm PARTIAL CONCRETE SLAB PATCHES SHOWN ARE ONLY A REPRESENTATIVE APPROXIMATION OF THE TENDERED QUANTITIES.
 6. RENEW BARRIER CURB AS PER SD-206A AND AS DIRECTED BY CONTRACT ADMINISTRATOR.
 7. ALL PRIVATE WALKWAYS TO BE ADJUSTED TO NEW SIDEWALK OR TOP OF CURB ELEVATION, AS DIRECTED BY THE CONTRACT ADMINISTRATOR.
 8. PAVEMENT REPAIR FABRIC TO BE INSTALLED AS SHOWN OR AS DIRECTED BY CONTRACT ADMINISTRATOR.
 9. MODIFIED BARRIER CURB TO BE CONSTRUCTED AT ALL INTERSECTION RADII AND ALLEY RADII.
 10. OVERLAY EXISTING CONCRETE AND ASPHALT APPROACHES AS DIRECTED BY CONTRACT ADMINISTRATOR.
 11. CONTRACTORS TO TAKE PRECAUTIONARY STEPS TO PROTECT EXISTING TREES WITHIN THE LIMITS OF CONSTRUCTION FROM DAMAGE FROM CONSTRUCTION ACTIVITIES AS OUTLINED IN THE SPECIFICATIONS.
 12. LAMP STANDARDS, HYDRO POLES, AND ANCHORS THAT REQUIRE TEMPORARY SUPPORT, REMOVAL OR REPLACEMENT, TO BE DONE SO AT THE EXPENSE OF THE CONTRACTOR AS NECESSARY.
 13. ALL BOULEVARDS TO BE SODDED UNLESS OTHERWISE NOTED.
 14. ADJUST ALL WATER VALVES, HYDRANTS, MANHOLES, AND CATCH BASINS IN WORK AREA TO GRADE.



---	WATER MAIN	---	⊗	---	VALVE	---
---	LAND DRAINAGE SEWER	---	⊗	---	CURB STOP	---
---	WASTE WATER SEWER	---	⊗	---	HYDRO POLE & LIGHT STANDARD	---
---	HYDRO	---	⊗	---	LIGHT STANDARD OR TRAFFIC SIGNAL	---
---	GAS	---	⊗	---	HYDRO POLE / ANCHOR	---
---	COMMUNICATIONS	---	⊗	---	FENCE	---
---	SIGNALS	---	⊗	---	PROPERTY LINE	---
○	MANHOLE	●	⊗	---	IRON BAR	---
□	CATCH BASIN/CATCH PIT	■	⊗	---	TEST HOLE / PAVEMENT CORE	---
△	CURB INLET	▼	⊗	---	ELEVATIONS (231.00)	---
◇	UTILITIES ADJUSTED	△ □ ○	⊗	---	CURB RAMP	---
◇	HYDRANT	◆	⊗	---	DETECTABLE WARNING SURFACE TILE	---
EXISTING	LEGEND-PLAN	PROPOSED	EXISTING	LEGEND-PLAN	PROPOSED	EXISTING

---	EDGE OF SIDEWALK	---
---	EDGE OF ASPHALT	---
---	EDGE OF CONCRETE	---
---	MODIFIED BARRIER CURB	---
---	BARRIER CURB	---
---	BARRIER CURB AND GUTTER	---
---	PAVING STONE	---
---	CONCRETE SIDEWALK	---
---	CONCRETE SLAB	---
---	ASPHALT	---
---	MILLED SURFACE	---
---	PAVEMENT REPAIR FABRIC	---
---	LEGEND-PLAN	PROPOSED

LOCATIONS APPROVED UNDERGROUND STRUCTURES	
SIGNED BY:	DATE
SUPPLY UNDER STRUCTURES	
LOCATION OF UNDERGROUND STRUCTURES AS SHOWN ARE BASED ON THE BEST INFORMATION AVAILABLE BUT NO GUARANTEE IS GIVEN THAT ALL EXISTING UTILITIES ARE SHOWN OR THAT THE GIVEN LOCATIONS ARE EXACT CONFIRMATION OF EXISTENCE AND EXACT LOCATION OF ALL SERVICES MUST BE OBTAINED FROM THE INDIVIDUAL UTILITIES BEFORE PROCEEDING	

G.B.M. ELEV.	TOH AT 80 SNOW ST	
7	233.991	
6		
5		
4		
3		
2		
1		
0		
NO.	ISSUED FOR TENDER	20250321 R.H.
REVISIONS	DATE	BY

DESIGNED BY	R.H./G.Z.	CHECKED BY	R.H.
DRAWN BY	G.Z.	APPROVED BY	S.M.
HOR. SCALE	1:250	RELEASED FOR CONSTRUCTION	
VERTICAL	1:10		
DATE	JANUARY 2025	DATE	

WSP Canada Inc.	ENGINEERS SEAL
1600 Buffalo Place	
Winnipeg, MB R3T 6B8	
t. 204.477.6650	
f. 204.474.2864	
www.wsp.com	
CONSULTANT ACAD DWG. NO.	
CA0043424.6934-33	

THE CITY OF WINNIPEG	
PUBLIC WORKS DEPARTMENT	
ENGINEERING SERVICES DIVISION	
2025 LOCAL STREET RENEWALS	
SNOW STREET	
MAJOR REHABILITATION	
STA. 2+80 TO STA. 3+72.68	
TENDER NO.	230-2025

METRIC

WHOLE NUMBERS INDICATE MILLIMETRES
DECIMALIZED NUMBERS INDICATE METRES

ENGINEERS
GEOSCIENTISTS
MANITOBA
Certificate of Authorization
WSP Canada Inc.
No. 5750

FOR TENDER PURPOSES ONLY
NOT FOR CONSTRUCTION