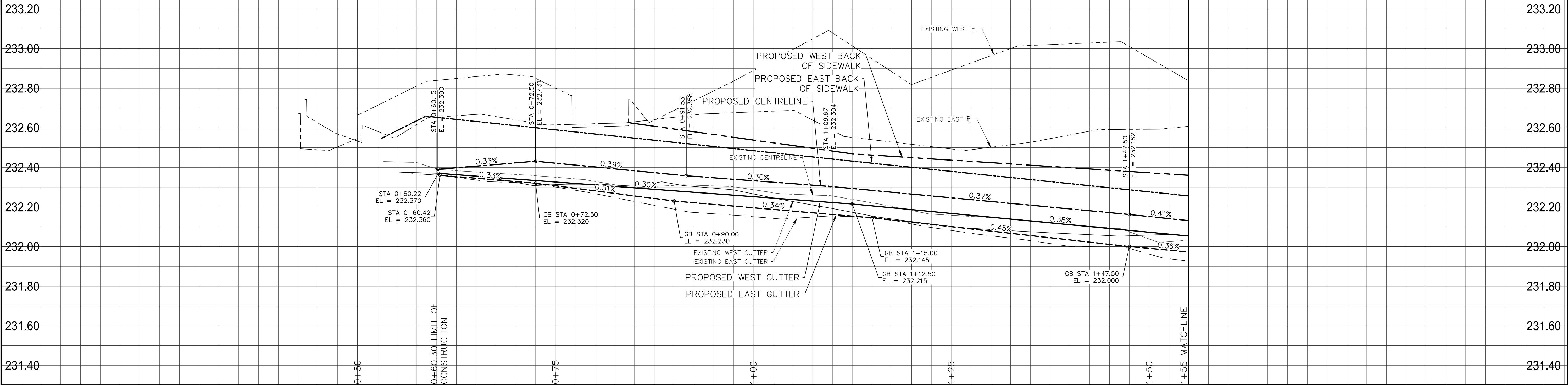
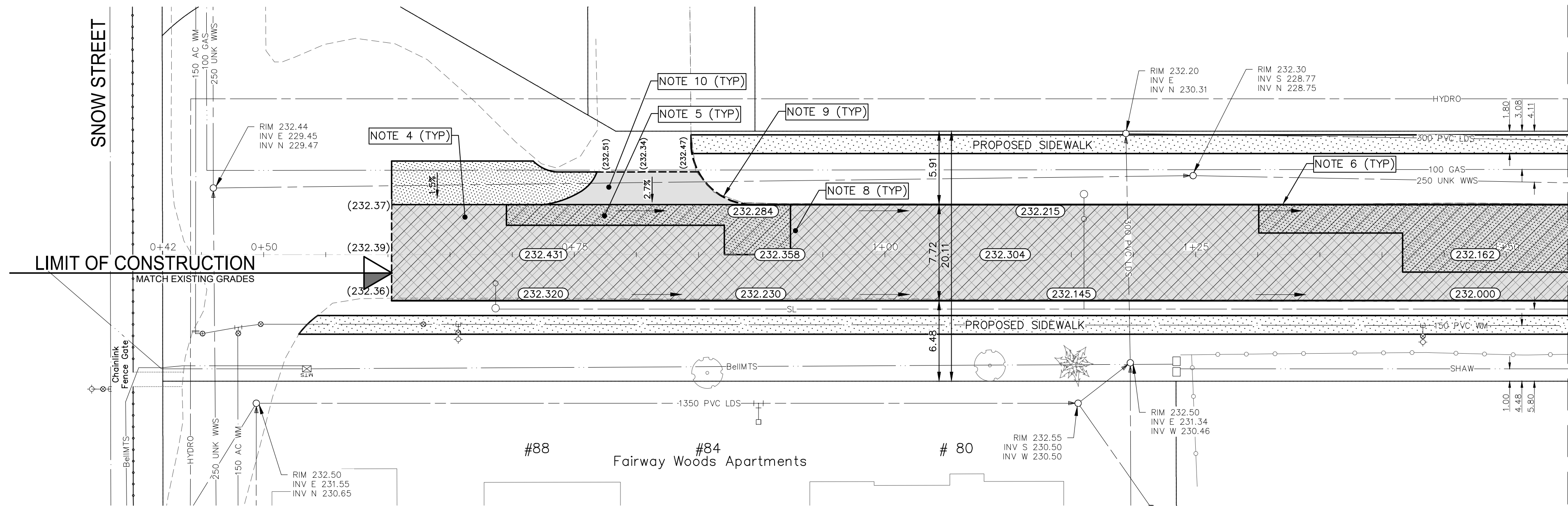
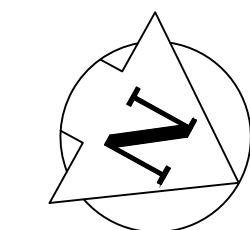


Mar 27, 2025 — 6:01pm
P:\2024\CA0043424.6934 - CA-25-R-04 Local Streets\02 Drawings\03 Work_Dwg CA0043424.6934_CA_25-R-04_Snow_Plan&Profile.dwg - tab: 230-2025_Drawing_CA0043424.6934-31-R0



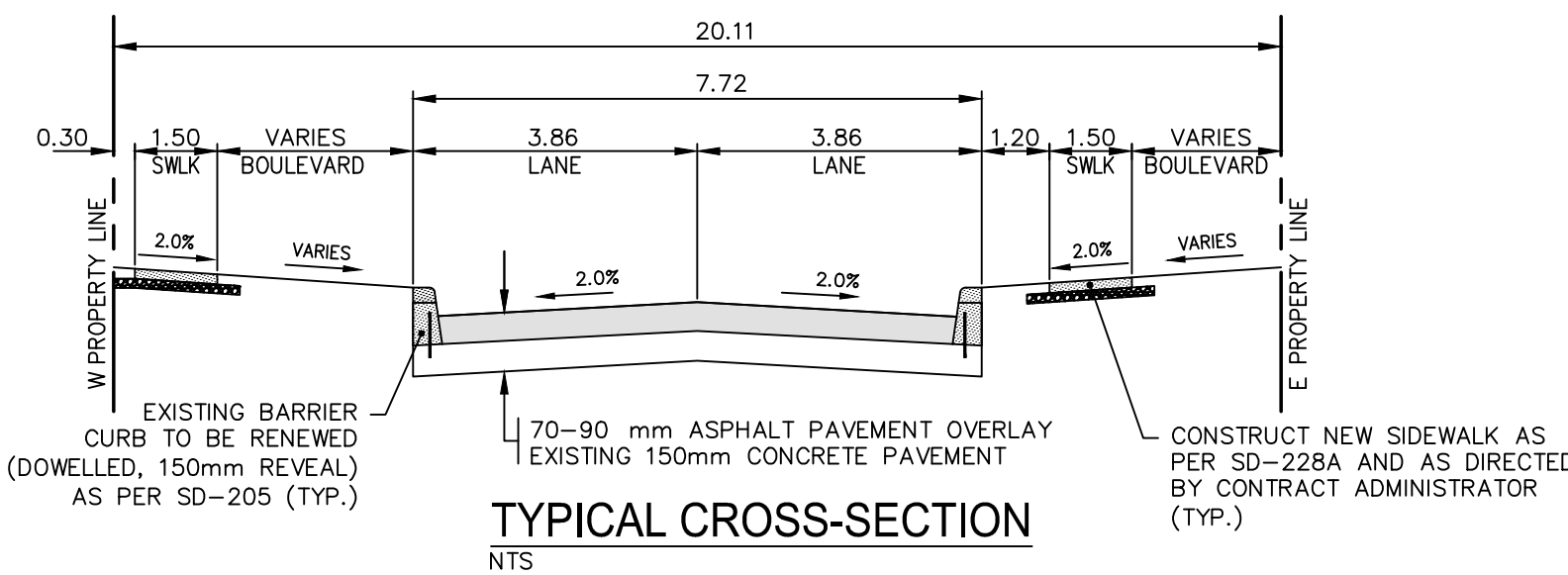
SNOW STREET



FOR CONTINUATION SEE
DWG CA0043424.6934-32

NOTES:

1. ALL WORK AND MATERIALS TO BE IN ACCORDANCE WITH THE LATEST REVISION OF THE CITY OF WINNIPEG STANDARD CONSTRUCTION SPECIFICATIONS.
2. CONTRACTOR TO CONFIRM THE LOCATION OF ALL UTILITIES/SERVICES IN THE FIELD PRIOR TO CONSTRUCTION.
3. ALL ROADWAY DIMENSIONS SHOWN ARE TO BACK OF CURB.
4. EXISTING ASPHALT TO BE PLANED AS SHOWN OR AS DIRECTED BY CONTRACT ADMINISTRATOR.
5. 150mm PARTIAL CONCRETE SLAB PATCHES SHOWN ARE ONLY A REPRESENTATIVE APPROXIMATION OF THE TENDERED QUANTITIES.
6. RENEW BARRIER CURB AS PER SD-206A AND AS DIRECTED BY CONTRACT ADMINISTRATOR.
7. ALL PRIVATE WALKWAYS TO BE ADJUSTED TO NEW SIDEWALK OR TOP OF CURB ELEVATION, AS DIRECTED BY THE CONTRACT ADMINISTRATOR.
8. PAVEMENT REPAIR FABRIC TO BE INSTALLED AS SHOWN OR AS DIRECTED BY CONTRACT ADMINISTRATOR.
9. MODIFIED BARRIER CURB TO BE CONSTRUCTED AT ALL INTERSECTION RADII AND ALLEY RADII.
10. OVERLAY EXISTING CONCRETE AND ASPHALT APPROACHES AS DIRECTED BY CONTRACT ADMINISTRATOR.
11. CONTRACTORS TO TAKE PRECAUTIONARY STEPS TO PROTECT EXISTING TREES WITHIN THE LIMITS OF CONSTRUCTION FROM DAMAGE FROM CONSTRUCTION ACTIVITIES AS OUTLINED IN THE SPECIFICATIONS.
12. LAMP STANDARDS, HYDRO POLES, AND ANCHORS THAT REQUIRE TEMPORARY SUPPORT, REMOVAL OR REPLACEMENT, TO BE DONE SO AT THE EXPENSE OF THE CONTRACTOR AS NECESSARY.
13. ALL BOULEVARDS TO BE SODDED UNLESS OTHERWISE NOTED.
14. ADJUST ALL WATER VALVES, HYDRANTS, MANHOLES, AND CATCH BASINS IN WORK AREA TO GRADE.



EXISTING	LEGEND-PLAN	PROPOSED	EXISTING	LEGEND-PLAN	PROPOSED	EXISTING	LEGEND-PLAN	PROPOSED
---	WATER MAIN	---	---	VALVE	---	---	EDGE OF SIDEWALK	---
---	LAND DRAINAGE SEWER	---	---	CURB STOP	---	---	EDGE OF ASPHALT	---
---	WASTE WATER SEWER	---	---	HYDRO POLE & LIGHT STANDARD	---	---	EDGE OF CONCRETE	---
---	HYDRO	---	---	LIGHT STANDARD OR TRAFFIC SIGNAL	---	---	MODIFIED BARRIER CURB	---
---	GAS	---	---	HYDRO POLE / ANCHOR	---	---	BARRIER CURB	---
---	COMMUNICATIONS	---	---	FENCE	---	---	BARRIER CURB AND GUTTER	---
---	SIGNALS	---	---	PROPERTY LINE	---	---	PAVING STONE	---
○	MANHOLE	●	⊕	TEST HOLE / PAVEMENT CORE	⊕	---	CONCRETE SIDEWALK	---
□	CATCH BASIN/CATCH PIT	■	⊕	ELEVATIONS	(231.000)	---	CONCRETE SLAB	---
△	CURB INLET	▽	⊕	CURB RAMP	---	---	ASPHALT	---
◇	UTILITIES ADJUSTED	△ □ ○	⊕	DETECTABLE WARNING SURFACE TILE	---	---	MILLED SURFACE	---
◇	HYDRANT	◆	⊕	---	---	---	PAVEMENT REPAIR FABRIC	---

LOCATIONS APPROVED UNDERGROUND STRUCTURES

SIGNED BY:	DATE
SUPPLY UNDER STRUCTURES	

NO.	REVISIONS	DATE	BY
7			
6			
5			
4			
3			
2			
1			
0	ISSUED FOR TENDER	2025/03/21	R.H.

DESIGNED BY	R.H./G.Z.
DRAWN BY	G.Z.

HOR. SCALE	1:250
VERTICAL	1:10
DATE	JANUARY 2025

WSP Canada Inc.	1600 Buffalo Place Winnipeg, MB R3T 6B8 t. 204.477.6650 f. 204.474.2864 www.wsp.com
ENGINEER'S SEAL	
CONSULTANT ACAD DWG. NO.	CA0043424.6934-31

THE CITY OF WINNIPEG	PUBLIC WORKS DEPARTMENT ENGINEERING SERVICES DIVISION
2025 LOCAL STREET RENEWALS	SNOW STREET
MAJOR REHABILITATION	STA. 0+60.30 TO STA. 1+55
TENDER NO.	230-2025

METRIC

WHOLE NUMBERS INDICATE MILLIMETRES
DECIMALIZED NUMBERS INDICATE METRES

**ENGINEERS
GEOSCIENTISTS
MANITOBA**
Certificate of Authorization
WSP Canada Inc.
No. 5750

FOR TENDER PURPOSES ONLY
NOT FOR CONSTRUCTION